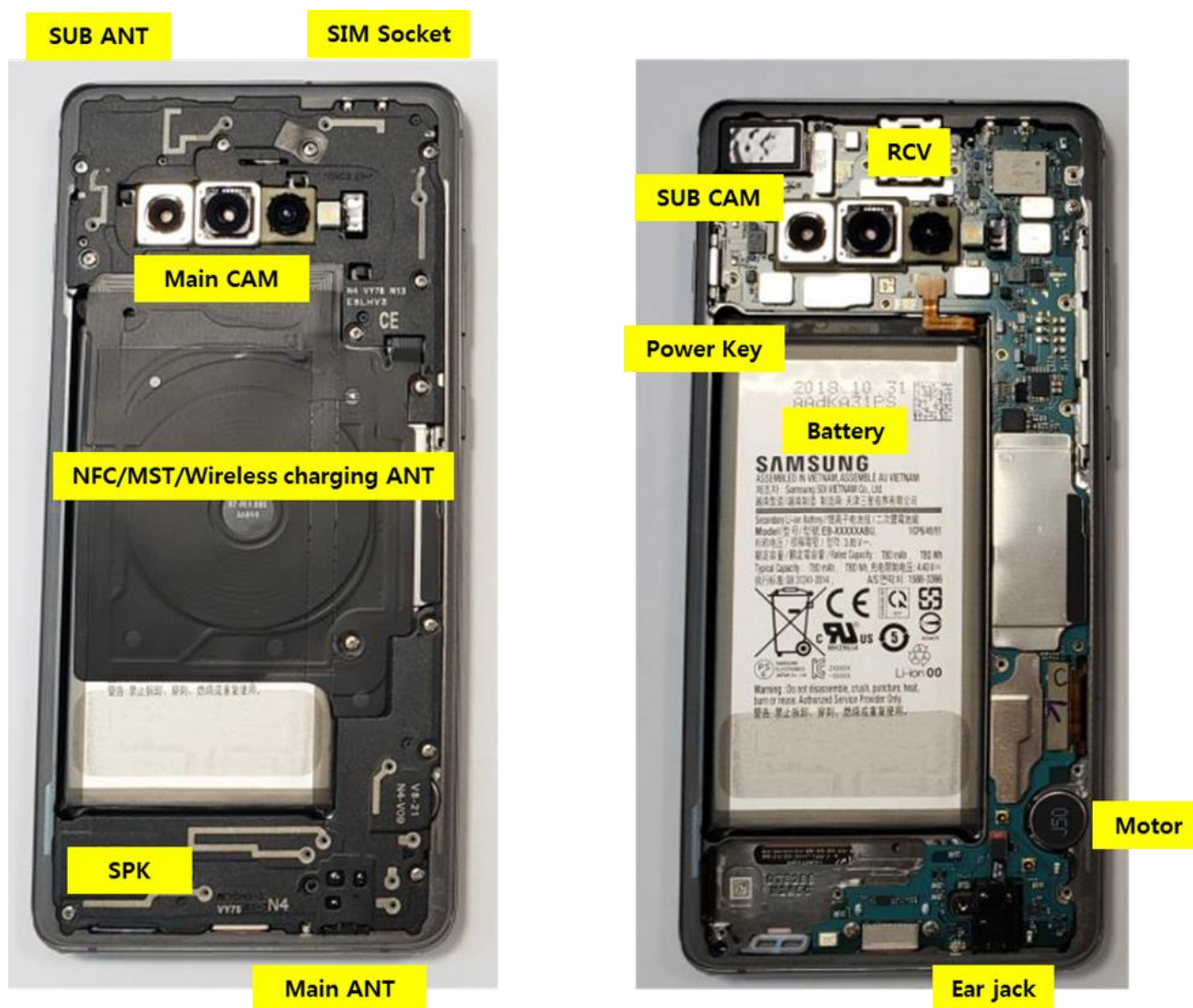

7. Level 2 Repair

7-1. Components on the Rear Case



7. Level 2 Repair

7-2. Pre-requisite

	
Tweezers / Disass'y Stick / Screw Driver	Anti-static Gloves
	
Anti-static Mat	Hot Plate
	
A OCTA Disassembly Holder	OCTA Disassembly Upper
	
Ethyl Alcohol	Cotton Swab

7. Level 2 Repair

7-3. Parts which must be changed after repair

BOM description & part code	KIT CODE	Image	Remarks
<p>A/S-SVC BACKGLASS OUTSIDE TAPE</p> <p>(Normal) [GH81-16501A]</p> <p>(Ceramic) [GH81-16592A]</p>	<p>(Normal) [GH82-18801A]</p> <p>(Ceramic) [GH82-18802A]</p>		<p>Replace for Back Glass</p>
<p>A/S-SVC CAM SEALING TAPE (Common)</p> <p>[GH02-17605A]</p>			
<p>Mic sealing tape</p> <p>[GH02-07406A]</p>			

7. Level 2 Repair

7-4. Disassembly

1

Put the device in the chamber as following below heating condition

- SOC 68%↓: 70°C/10~20 minute
- SOC 68%↑: 60°C/10~20 minute

※ Please confirm the heating condition released lastly, and follow it.



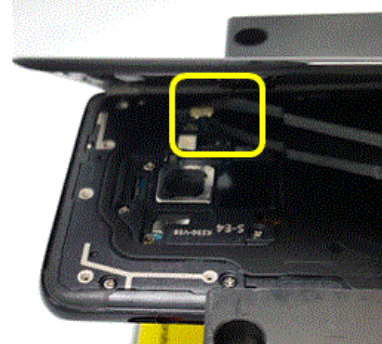
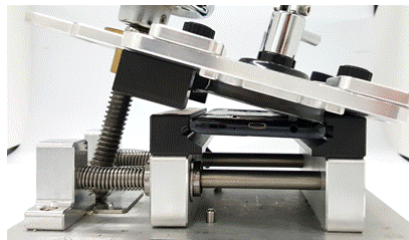
Put the device into Mobile Dryer.(70°C/10mins)



2

Detach the Back Glass. And Finger sensor

- 1) Detach the left side of Back glass
- 2) Detach the Finger sensor connector



※ Caution
Be care of scratch.

※ Caution
Be care of scratch.

3

Unscrew 16 Point and disassemble SIM Tray from device.



4

Disassemble Upper Rear.
(Use disassemble hole left/right side of Rear to detach it)



Rear Top disassemble hole.

※ Caution
Be care of Rear damage.

※ Caution
1) Be care of scratch.
2) Be care of Rear and connector damage.
3) Be care of NFC ANT damage.

7. Level 2 Repair

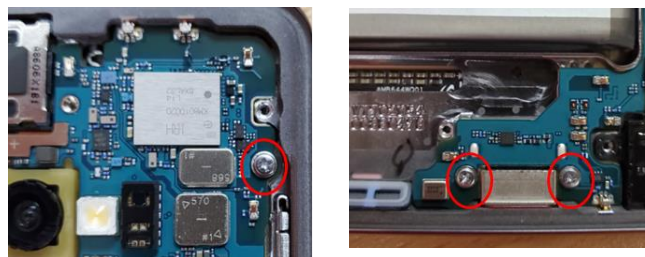
5

Finally Disassemble Rear of bottom side.
(Use disassemble hole right side of Rear to detach it)



6

Unscrew PBA 3points.



※ Caution

- 1) Be care of scratch.
- 2) Be care of Rear and connector damage.
- 3) Be careful not to damage the PBA.

※ Caution

Be careful not to damage the PBA.

7

Detach Battery connect and the other connectors. (4 Point)



8

Detach Front cam.



※ Caution

- 1) Be care of scratch.
- 2) Be care of connector damage.

※ Caution

Be care of Front CAM / connector damage.

7. Level 2 Repair

9

Detach Ear JACK
(Use disassemble point)



10

Detach SUB PBA.



※ **Caution**
Be care of Ear jack connector.

※ **Caution**
Be care of SUB PBA damage.

11

Detach Main CAM.



12

Detach RCV and Motor.



※ **Caution**
Be careful not to damage the Main CAM.

※ **Caution**
Be careful not to damage the RCV/Motor.

7. Level 2 Repair

7-5. Assembly

1

Attach RVC,motor on Front.



2

attach Main CAM.



※ Caution

Be careful not to damage RVC,motor and Ear jack.

※ Caution

Be careful not to damage the Main CAM.

3

Attach PBA.

3-1



3-2



4

Attach SUB cam.
Assemble connector.
Cam module.

4-1



4-2



※ Caution

- 1) Be care of assemble USB.
- 2) Be care of PBA damage.

※ Caution

Be care of connector damage.

7. Level 2 Repair

5

Attach Ear Jack.



6

Attach batt, UB, Ear Jack
(3 Point)

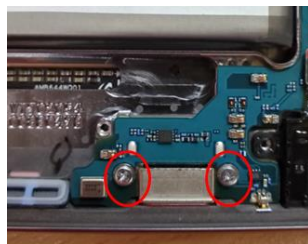
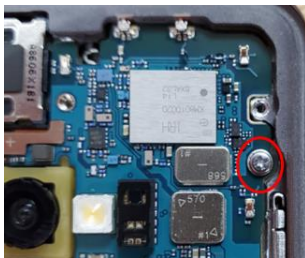


※ Caution
Be care of PBA/Ear jack damage.

※ Caution
Be care of connector damage.

7

Screw PBA 3points.



※ Caution
Be careful not to damage the PBA.

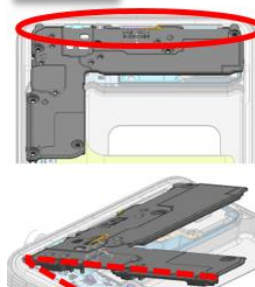
8

Assemble the Bottom REAR in sequence.

8-2



8-1



8-3



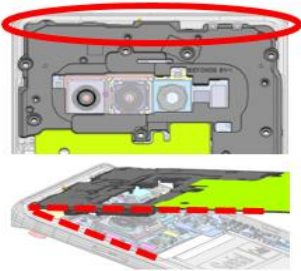
※ Caution
Be care of scratch and REAR damage.

7. Level 2 Repair

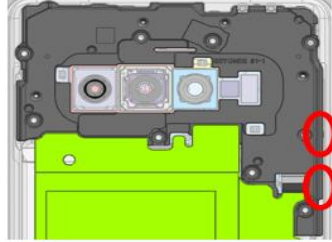
9

Assemble the TOP+MID REAR Assy in sequence.

9-1



9-2



10

Screw 16 Point and disassemble SIM Tray from device.



※ Caution
Be care of scratch and REAR damage.

※ Caution
Be care of Rear damage.

11

Attach the backglass



12

Press Back Glass.
Pressing force : $6.0\text{kgf/cm}^2 \pm 3\%$
Pressing time : $8 \pm 0.3\text{초}$



※ Caution
Be care of scratch and tilt.

※ Caution
Be care of scratch.