

## 7. Level 2 Repair





### 7-1. Pre-requisite

|   |  |
|---|--|
|    |   |
| <b>Tweezers / Disass'y Stick / Screw Driver</b>                                     | <b>Anti-static Gloves</b>  |
|    |    |
| <b>OCTA Disassembly Holder</b>  | <b>Anti-static Mat</b>   |
|  |  |
| <b>Acryl Jig Rework Form</b>  | <b>Glass Absorbers (2ea)</b>   |
|  |  |
| <b>Tape Rework Form</b>   | <b>Mobile Dryer</b>  |

**7-2. Parts which must be changed after repair**

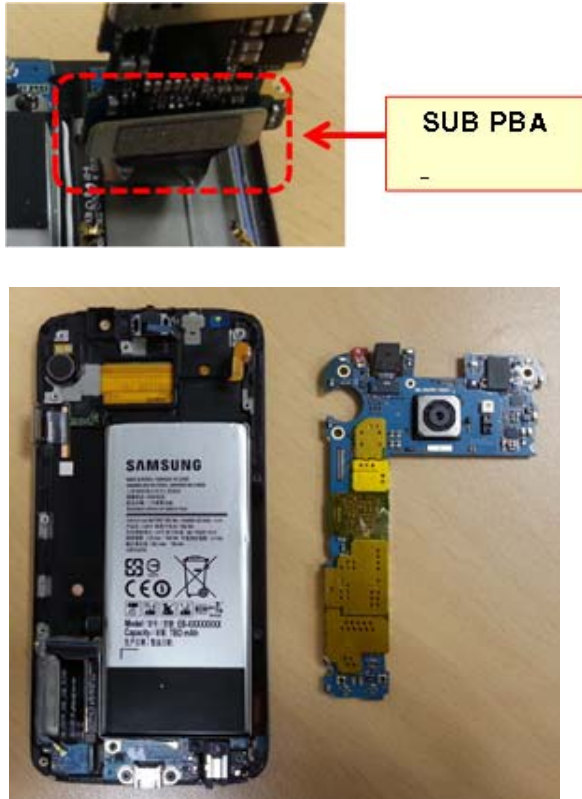
| BOM Discription                                       | Picture  | Remarks                                      |
|---|--|--|
| <p><b>A/S-TAPE MAIN WINDOW_(R/KIT)SM-G925F</b></p>    |    | <p><b>Replace when repair Front part</b></p> |
| <p><b>A/S-BRACKET SIDE</b></p>                        |    |  |
| <p><b>A/S-TAPE BACKGLASS OUTER(R/KIT)SM-G925F</b></p> |  | <p><b>Replace for all repair</b></p>         |

### 7-3 Disassembly

|   |  |
|---|--|
| <p><b>1</b></p> <p>1) Put the device in the chamber for 5 minutes under 70~80℃.<br/>2) Detech the Back Glass.</p>  | <p><b>2</b></p> <p>Unscrew 13 Point.</p>   |
| <p><b>※ Caution</b></p> <p>1) Be care of scratch</p>  |  |
| <p><b>3</b></p> <p>Disassemble the REAR.</p>   | <p><b>4</b></p> <p>Detach coaxial cable and connector. (6 Point, except Front CAM Connector)</p> <p><b>Front CAM</b> →</p>  |
| <p><b>※ Caution</b></p> <p>1) Be care of REAR damage</p> <p><b>※ Caution</b></p> <p>1) Be care of connector/cable damage</p>  |  |

5

Detach main PBA from bracket.



6

Detach main PBA from bracket.







**※ Caution**

- 1) Be care of FPCB damage
- 2) Be care of SUB PBA connector

**※ Caution**

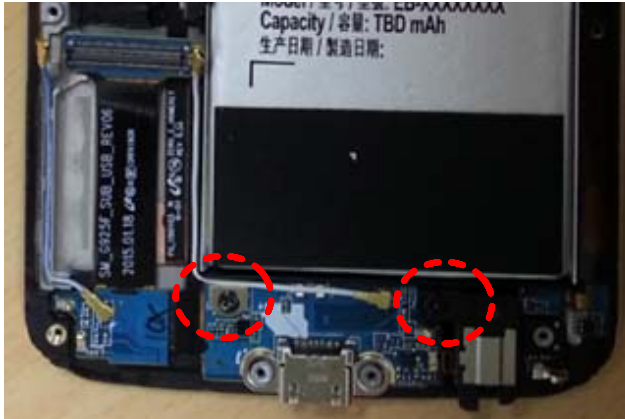
- 1) Be care of FPCB damage

### 7-3. Assembly

|  |  |
|--|--|
| <p>1 Attach Battery in Front bracket.</p>     | <p>2 Pressure Battery using JIG.</p>         |
| <p><b>※ Caution</b><br/>1) Be care of tilt</p>   | <p><b>※ Caution</b><br/>- Pressure : 1N, Time: 3 second</p>  |
| <p>3 Attach Home key in Front bracket.</p>  | <p>4 Attach SUB PBA in Front bracket.</p>  |
| <p><b>※</b><br/>1) Be care of Homekey FPCB connector</p>   | <p><b>※ Caution</b><br/>1) Be care of coaxial cable damage</p>   |

5

Screw 2 point in SUB PBA.



6

Attach UB in Front bracket



※ Caution

※ Caution

1) Be care of FPCB damage and tilt

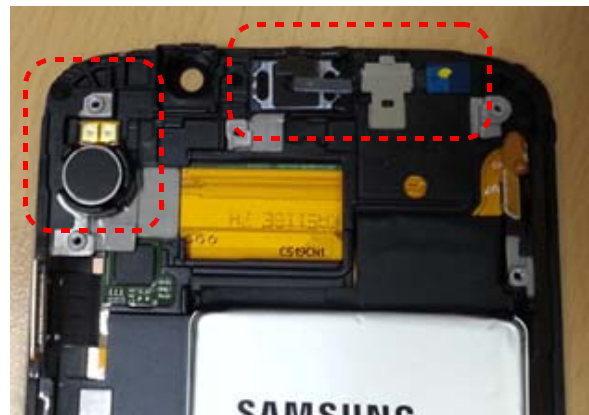
7

Pressure UB Assy



8

Attach components in OCTA assy  
(RCV module. Motor)



※ Caution

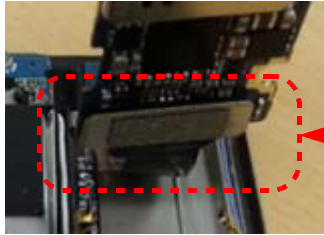
- Pressure : 1N, Time: 1 minute

※ Caution

1) Proximity -> IRLED -> RCV

9

Attach PBA assy In Front Assy.  
(PBA+ Front / Rear CAM)



SUB PBA Connector



10

Attach coaxial cable and connector in PBA. (6 Point)



**※ Caution**

- 1) Be care of Push SUB PBA connector.
- 2) Be care of components FPCB.
- 3) Be care of CAM Lens from finger print.

**※ Caution**

- 1) Be care of connector damage.

11

Assemble the REAR.



12

Screw 13 Point



**※ Caution**

- 1) Be care of scratch and REAR damage

**※ Caution**

- 1) Be care of scratch and REAR damage

13

Attach the Back Glass.



※ **Caution**

1) Be care of scratch and tilt.

14

Pressure Back Glass.



※ **Caution**

- Pressure : 1N, Time: 1 minute