

R330
R317

Q300

C345
R318

C335
C334
C333
C332
C331
C330
C321
C325
C328
C327
C326
C325
C324
C322

CN300

C306
C310
C311
C312
C313
C314
U404
C315
C316
C317
C318
C319
C320
C323

C219
C218
R221

L200

U202

VR205

VR201

VR200

VR203

VR206

1

R207
LED204

2

R203
LED200

3

4

R208
LED205

5

R204
LED201

6

R211
LED208

7

R209
LED206

8

R205
LED202

9

VR202
R213
LED210

*

R210
LED207

0

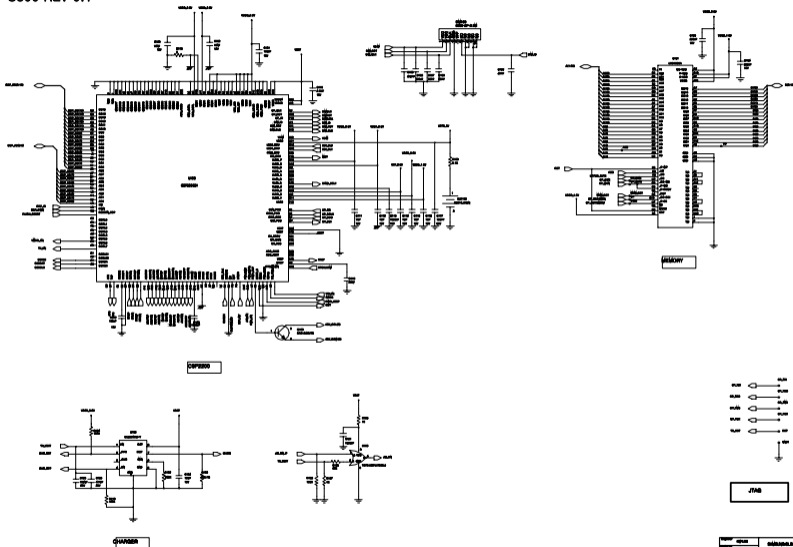
R206
LED203

SHAPE

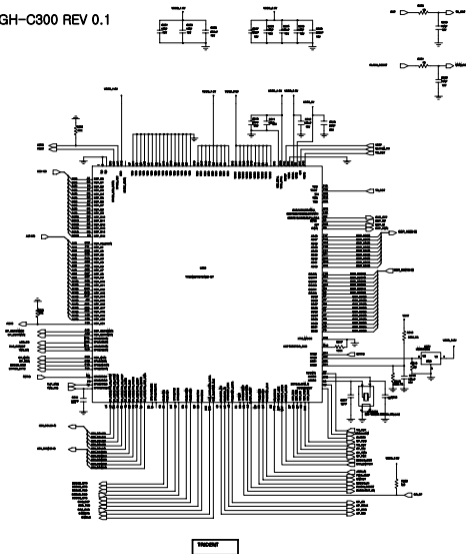
VR204
R212
LED209

VR207
VR208
R214
LED211

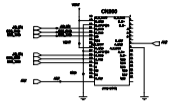
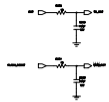
SGH-C300 REV 0.1



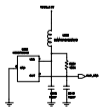
REV	0.1	DATE	2008-08-20
DESIGNER		CHECKER	
SGH-C300 REV 0.1			
NO.		REV.	



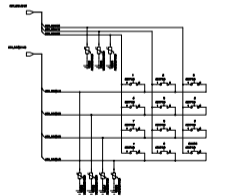
TRACER



EXT_000

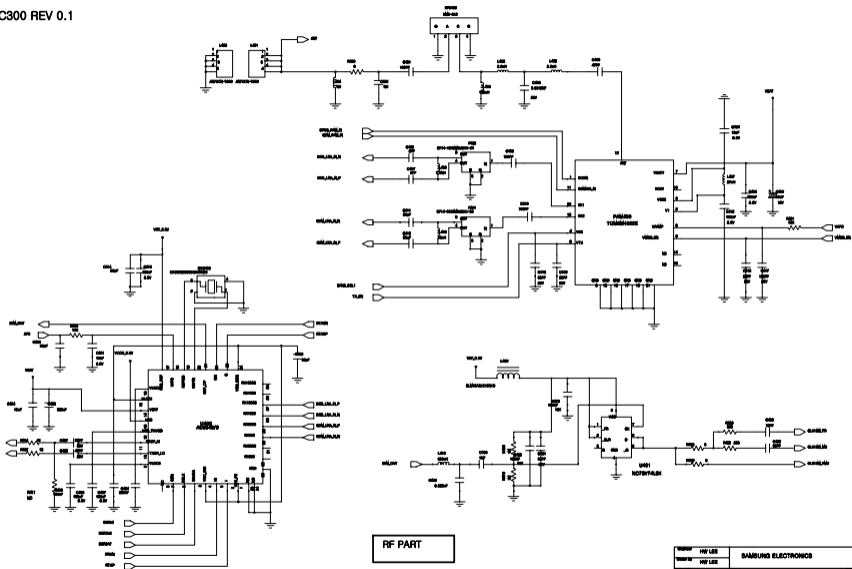


HALL IC



KEY

REVISIONS		MANUFACTURING	
Rev	0.1	Part	SGH-C300
Date		Lot	
Author		Operator	
Checked		Inspector	
SGH-C300 REV 0.1			



RF PART

DESIGNER	HYU LEE	SAMSUNG ELECTRONICS
REVIEWER	HYU LEE	
DATE		
SGH-NUVO REV.0.1		