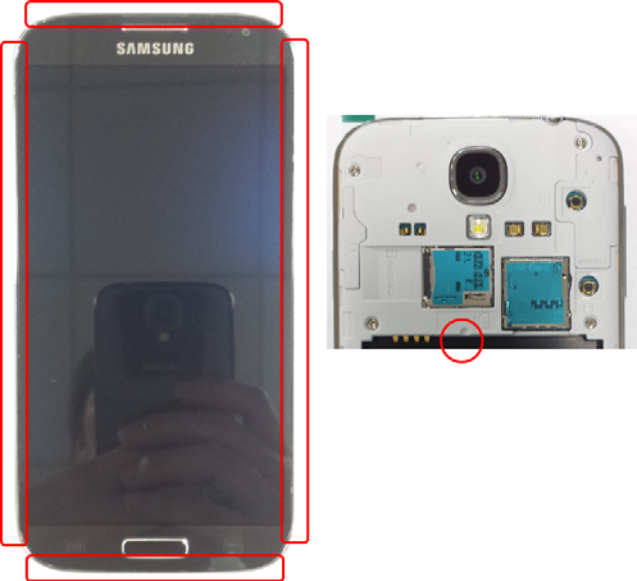



7. Level 2 Repair

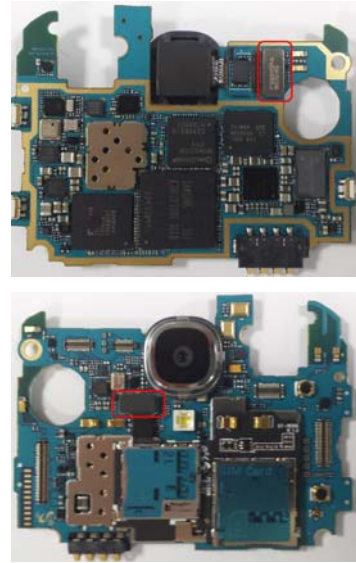
7-1. Disassembly

<p style="text-align: center;">1</p> 	<p style="text-align: center;">2</p> 
<p>1) Disassemble rear screw 9 points.</p>	<p>1) Disassemble rear with disassemble equipment, remove hook Right → Left → Bottom → Top 2) Remove hook which side of SIM socket.</p>
<p style="text-align: center;">3</p> 	<p style="text-align: center;">4</p> 
<p>1) Disassemble Rear from Front. 2) Disassemble screw 1point on PBA.</p>	<p>1) Remove LCD FPCB, SUB PBA, 2M CAMERA, RCV MODULE FPCB, and Earjack FPCB. 2) Remove coaxial cable. 3) Disassemble the PBA.</p>

5

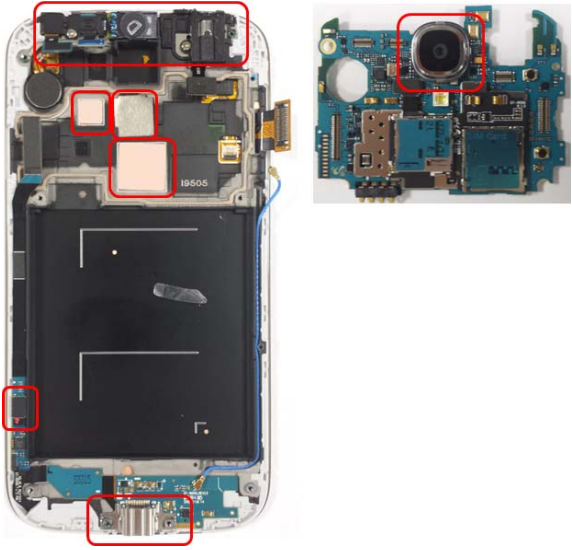
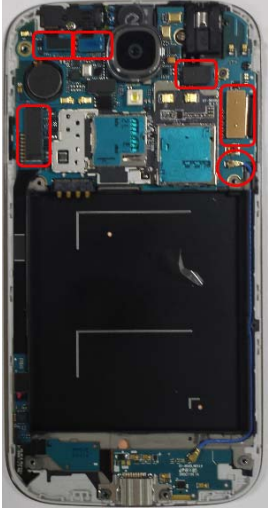

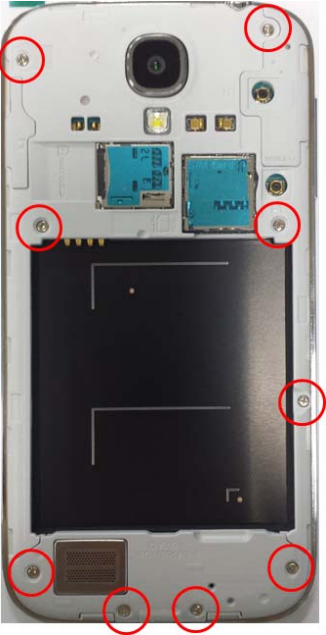


- 1) Remove Lower Touch FPCB.
- 2) Remove shield can over USB connector in case of changing the SUB PBA.



- 1) Remove 13M Camera.
- 2) Remove SIM/SD card FPCB.

7-2. Assembly

<p style="text-align: center;">1</p> 	<p style="text-align: center;">2</p> 
<p>1) Assemble SUB PBA and shield can on the USB connector. 2) Assemble Lower Touch FPCB. 3) Assemble Front Ass'y and PBA.</p>	<p>1) Assemble the PBA. 2) Connect coaxial cable. 3) Assemble LCD FPCB, SUB PBA, 2M CAMERA, RCV MODULE FPCB, and Earjack FPCB.</p>
<p style="text-align: center;">3</p> 	<p style="text-align: center;">4</p> 
<p>2) Assemble screw 1 point on PBA.(Torque:1.0 ~ 1.2 Kgf · Cm)</p>	<p>1) Assemble Front with Rear. 2) Assemble screw 9 Points on Rear.(Torque:1.0 ~ 1.2 Kgf · Cm)</p>