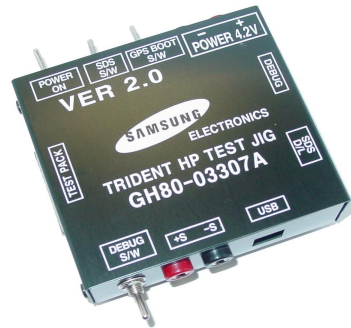


---

## 4. Array course control

---



**Test Jig (GH80-03307A)**



**Test Cable (GH39-00831A)**



**RF Test Cable (GH39-00397A)**

## **Software Downloading**

### **4-1. Downloading Binary Files**

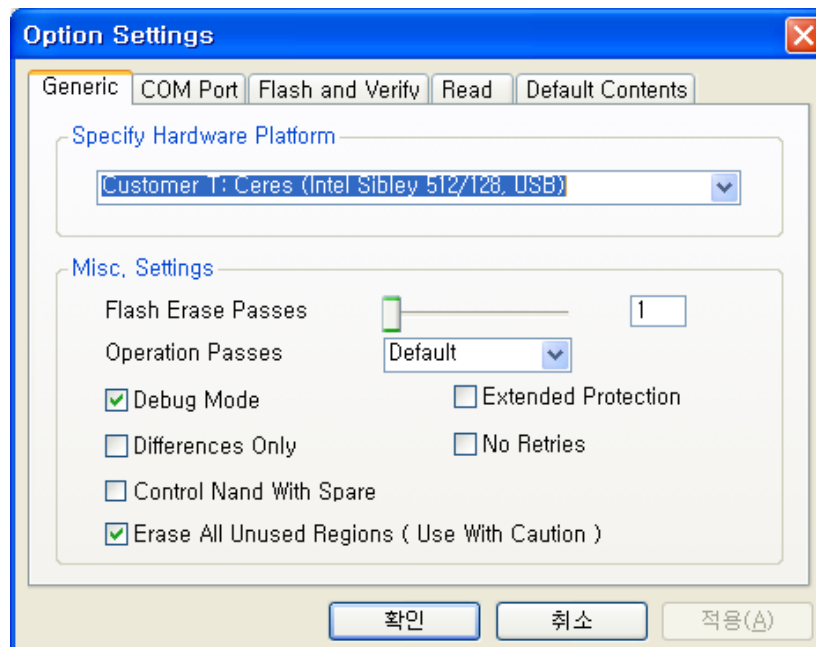
- Three binary files for downloading J610.
  - J610XXYY.s3 : Main source code binary.
  - J610XXYYY.cts : Contents File

### **4-2. Pre-requisite for Downloading**

- Downloader Program([OptiFlash.exe](#))
- J610 Mobile Phone
- Data Cable
- Binary files

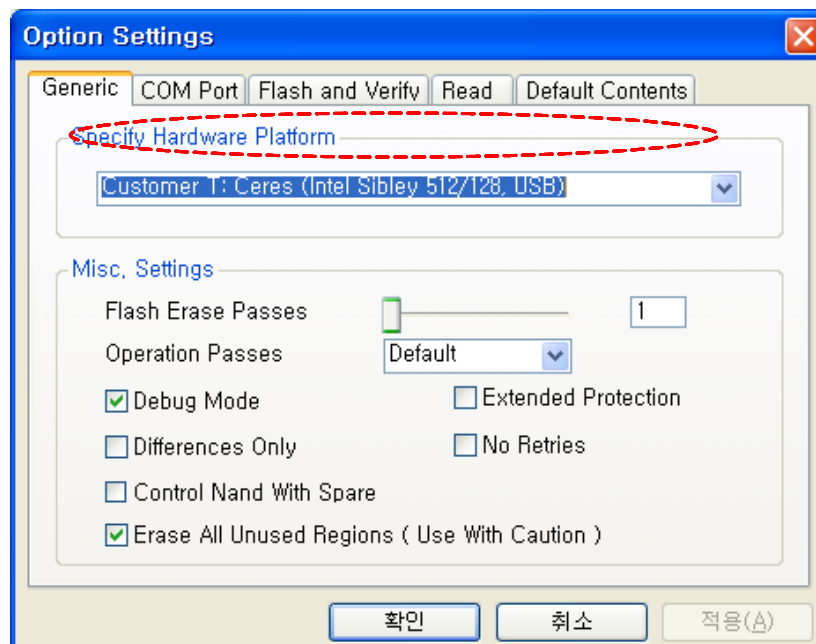
### 4-3. S/W Downloader Program

1. Load the binary download program by executing the “**OptiFlash.exe**”

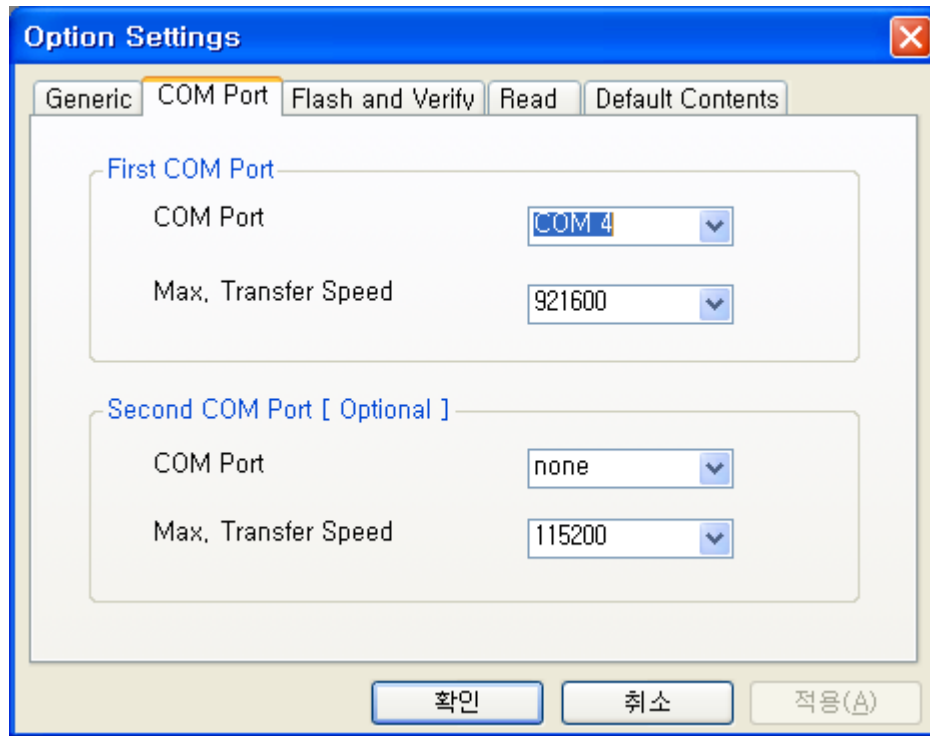


2. Select the “**Options**” -> “**Settings**” -> “**Generic**” -> “**Specify hardware platform**”.  
Choose hardware platform for the downloader file setting.

Set the everything else as the default values which are shown below



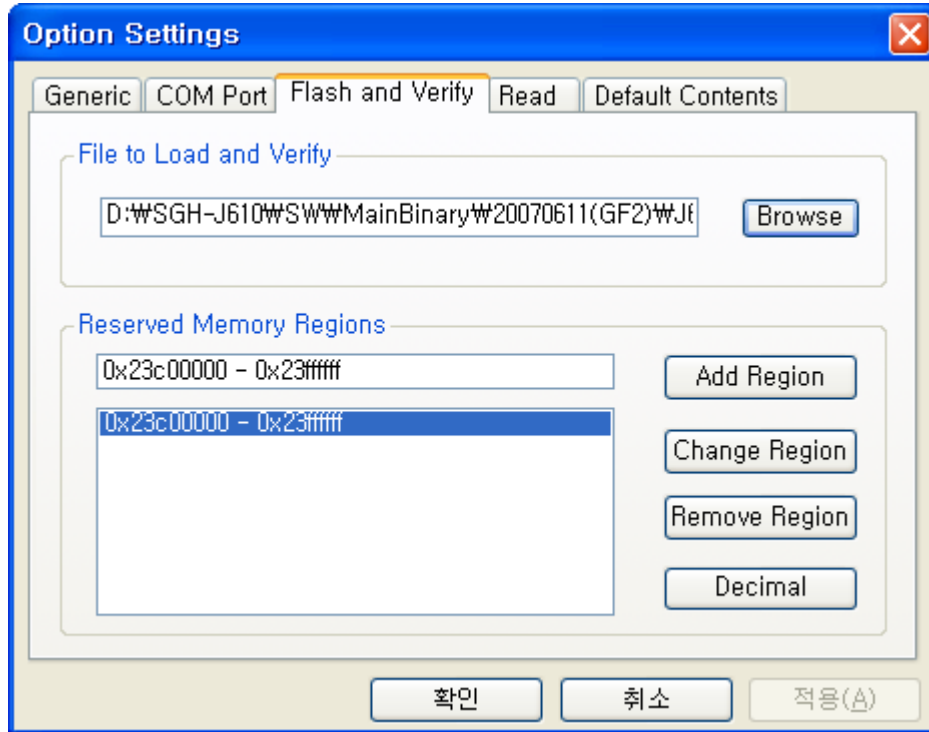
3. Select the **COM port** when the download cable is connected



Up to twelve ports are supported. Additionally you can select the maximum transfer speed OptiFlash will use to communicate with the phone. However, OptiFlash will use a slower speed if either the PC's or the phone's serial hardware is incapable of handling the selected speed.

#### 4. Select the “Flash&Verify” -> “Browse”

Set the directory path and choose the latest s/w binary, for example “J610XXYY.s3”, for the downloader binary setting.

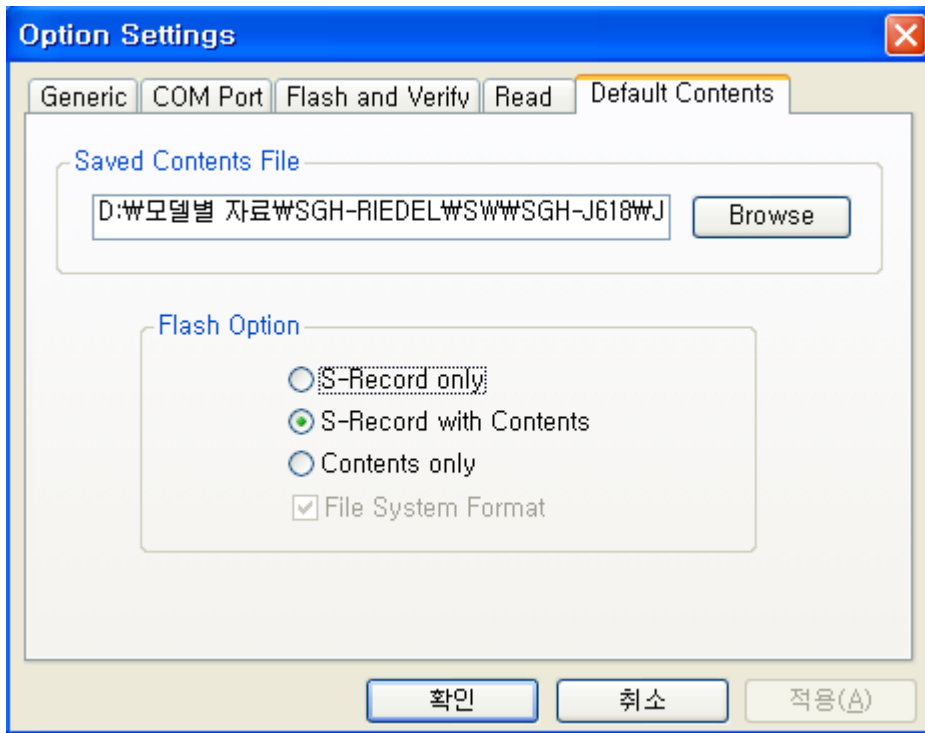


The reserved memory regions are included in optiflash program, platform.def.

5. Select the "Default Contents"

Click the "Browse" button and choose the contents file, for example, **J610XXXXX.cts** file.

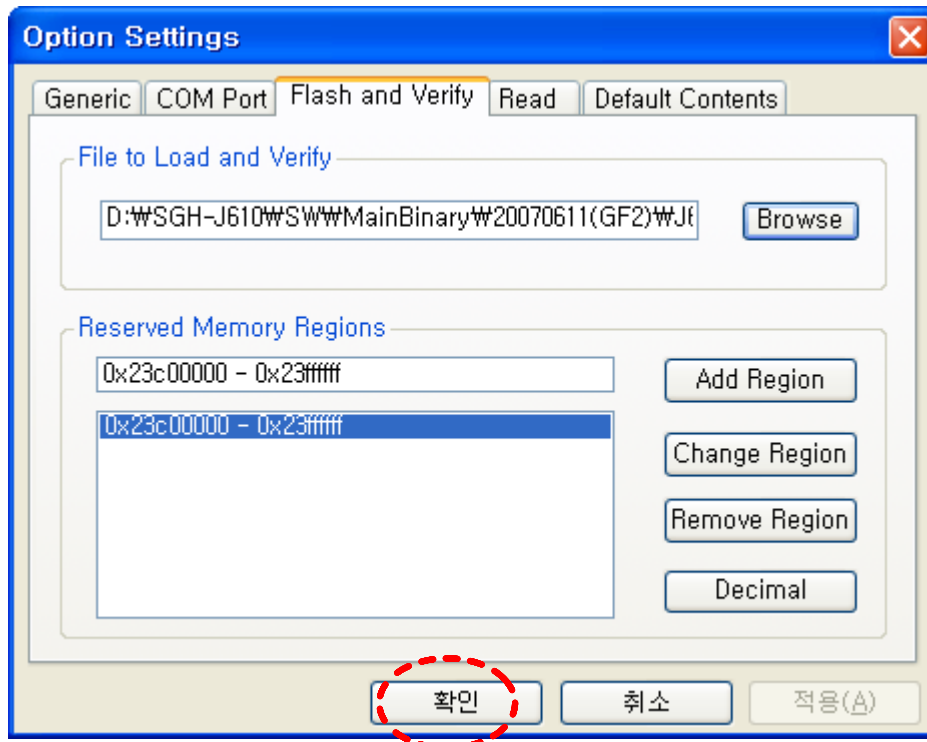
And, Choose the "S-Record with Contents" in the "Flash Option"



5. Click “**OK**” button then press “**Flash**”.

(Before pressing ‘Flash’ button, push the button “\*” and ‘END’ at the same time. Then press ‘Flash’.)

Downloader will upload the binary file as below for the downloading.



6. When downloading is finished successfully, there is a “All is well” message.

7. After finishing downloading, Certain memory resets should be done to guarantee the normal performance.

8. Confirm the downloaded version name and etc. :

**\*#1234#**

Full Reset :

**\*2767\*3855#**