

# GIGABYTE GA-8IR533 Schematics

Revision 1.0

SHEET


TITLE

01	COVER SHEET
02	BOM & PCB MODIFY HISTORY
03	WILLIAMATE_478A
04	WILLIAMATE_478B
05	WILLIAMATE_478C
06	MCH-BROOKDALE-E_A
07	MCH-BROOKDALE-E_B
08	MCH-BROOKDALE-E_C
09	MD0~63
10	DDR1~2
11	DDR-TERM
12	AGP
13	ICH4_1
14	ICH4_2
15	FWH (SINGLE BIOS)
16	ICS950208 CLOCK GEN
17	PCI1_2
18	PCI3_4
19	PCI5
20	ITE LPC I/O
21	IDE
22	KB_PS2

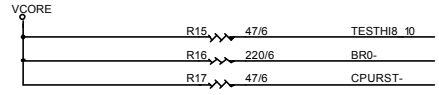
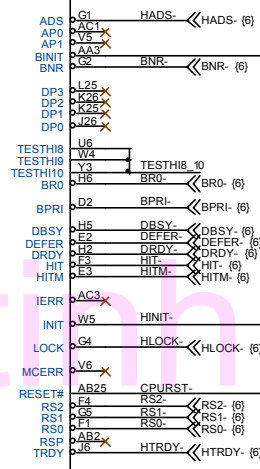
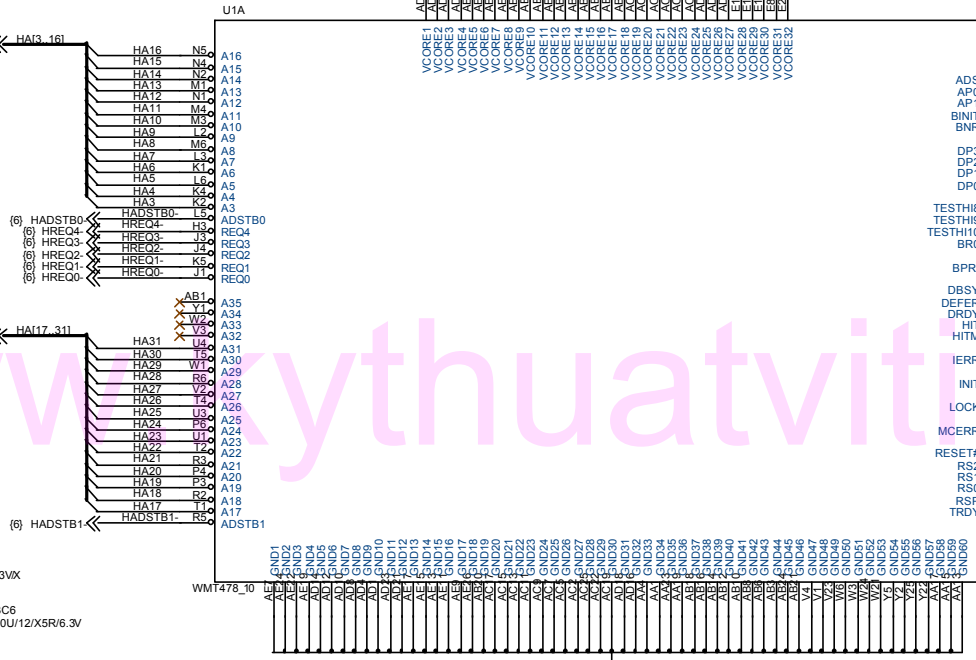
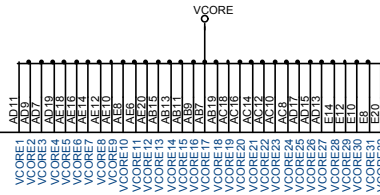
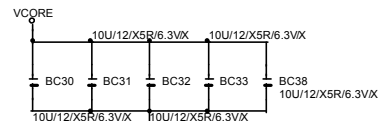
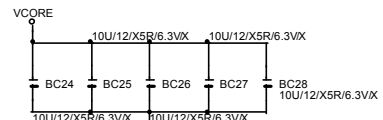
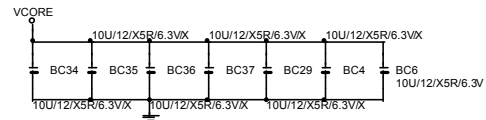
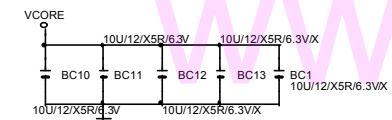
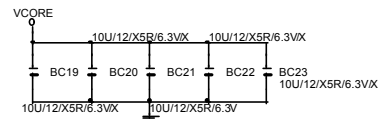
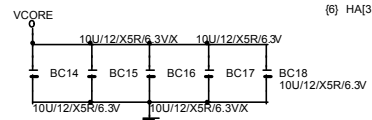
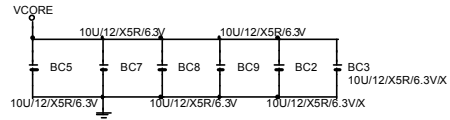
SHEET

TITLE

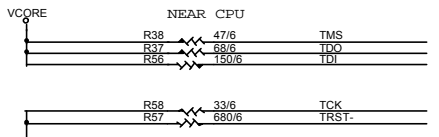
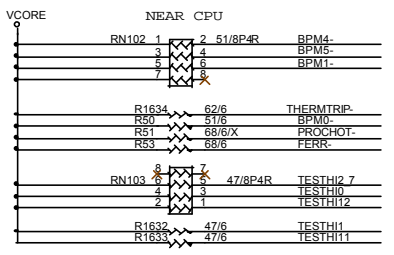
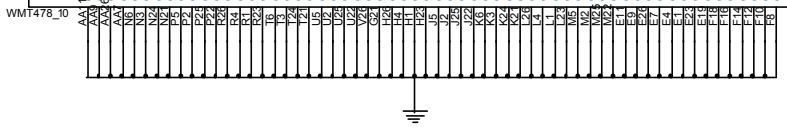
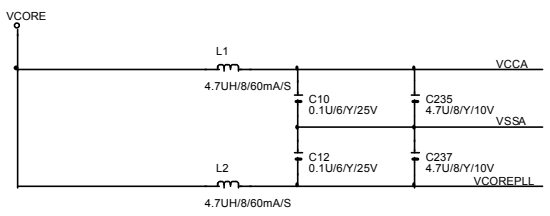
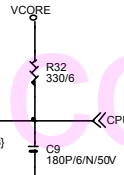
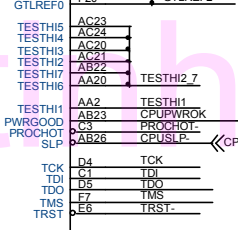
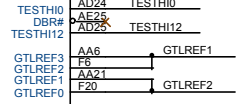
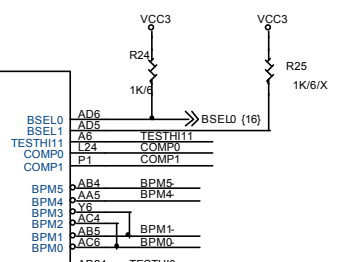
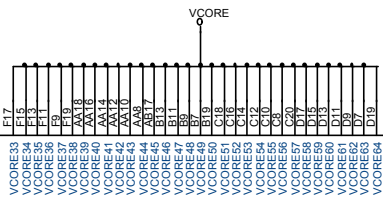
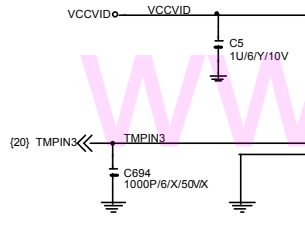
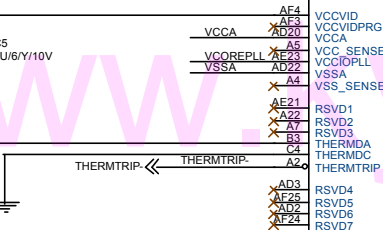
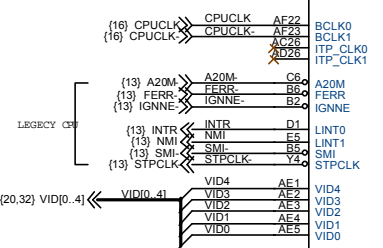
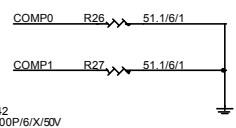
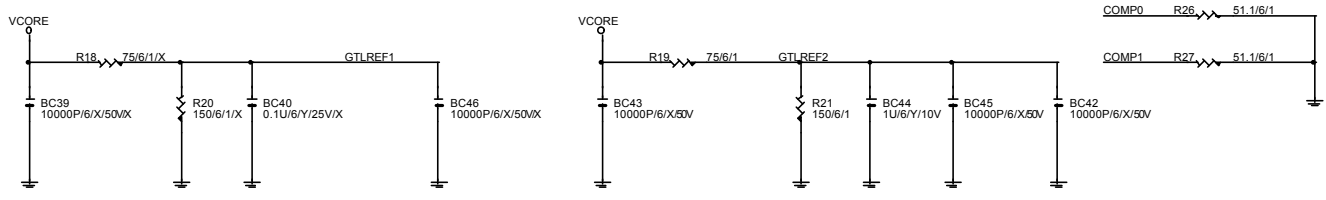
23	COM_LPT_FDD
24	F-USB1 & F-USB2
25	FPANEL
26	CODEC
27	AUDIO_GAMEPORT
28	DDR POWER
29	POWER1
30	POWER2
31	LAN RTL8100B & B-USB CONNECTOR
32	GPIO LIST
33	PCI ROUT LIST
34	
35	
36	
37	
38	
39	
40	
41	
42	
PCB	

	
<b>GIGABYTE</b>	
Title: COVER SHEET	
Size: Custom	Document Number: GA-8IR533
Date: Friday, May 17, 2002	Rev: 1.0
Sheet 1 of 33	

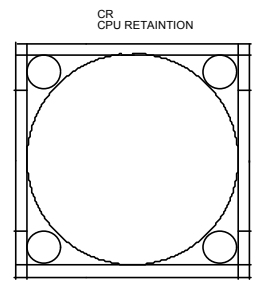
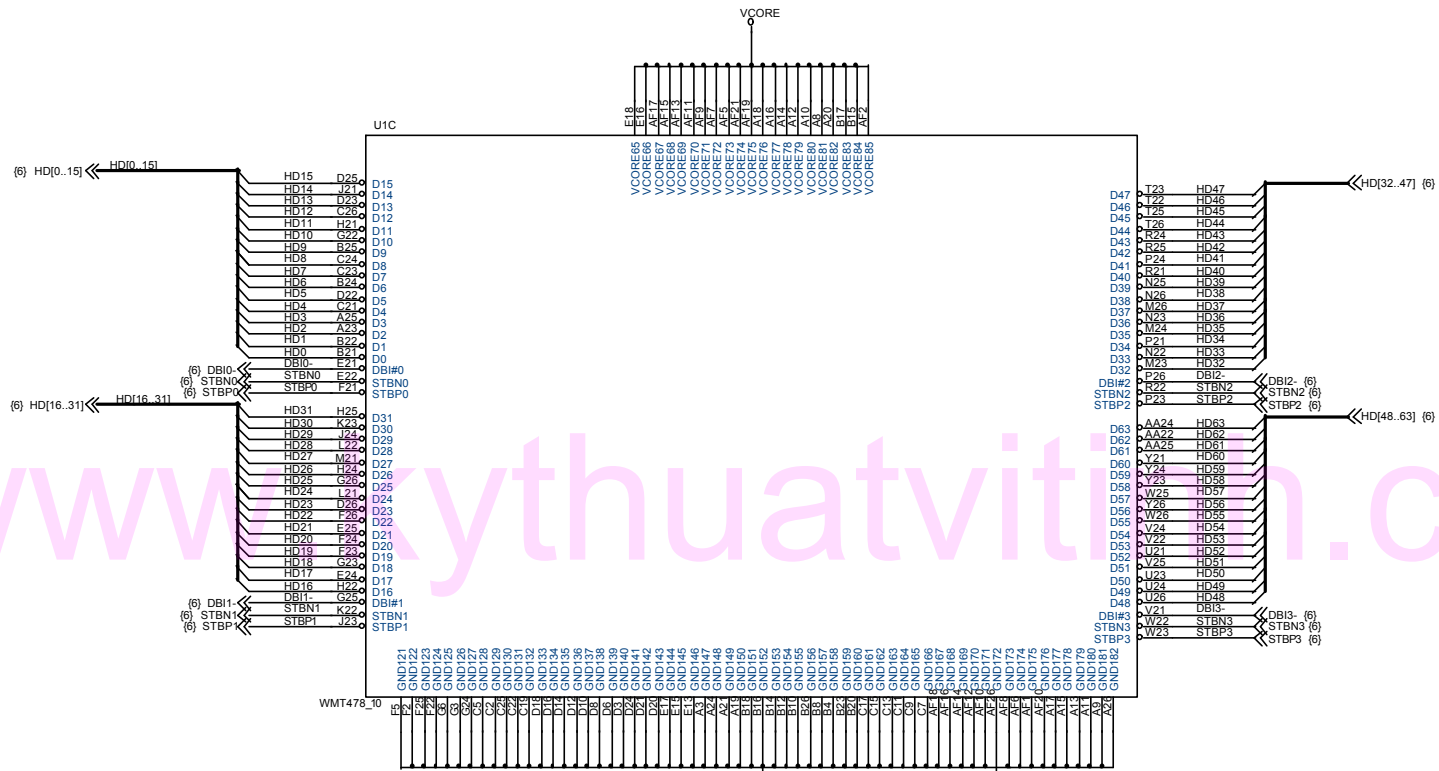




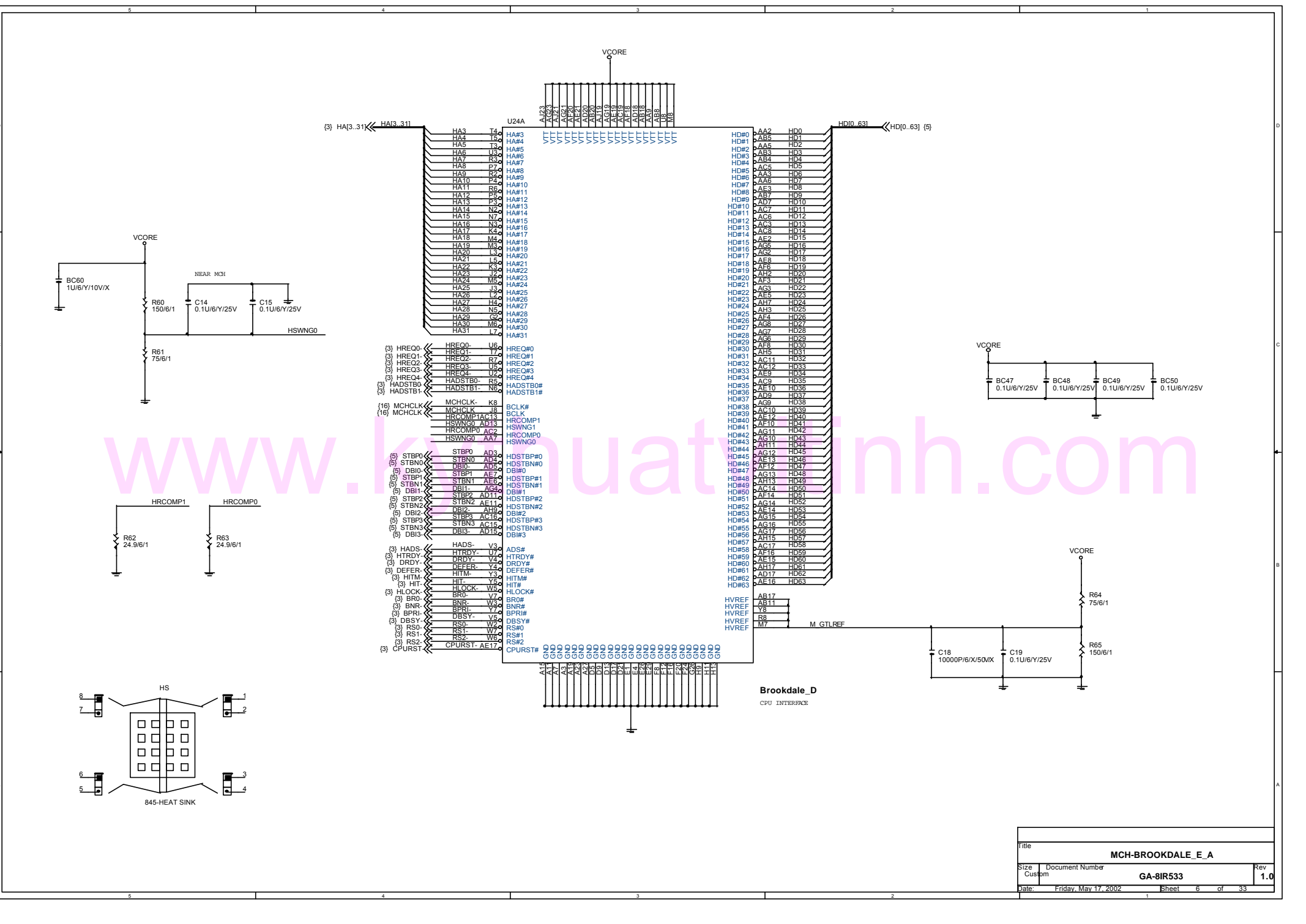
Title		
WILLIAMATE 478A		
Size	Document Number	Rev
Custom	GA-8IR533	1.0
Date:	Friday, May 17, 2002	Sheet 3 of 33



Title		
WILLIAMATE 478B		
Size	Document Number	Rev
Custom	GA-8IR533	1.0
Date:	Friday, May 17, 2002	Sheet 4 of 33

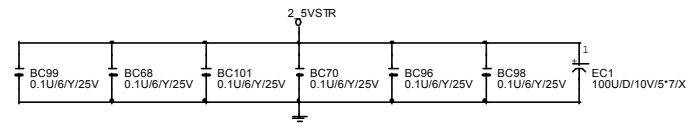
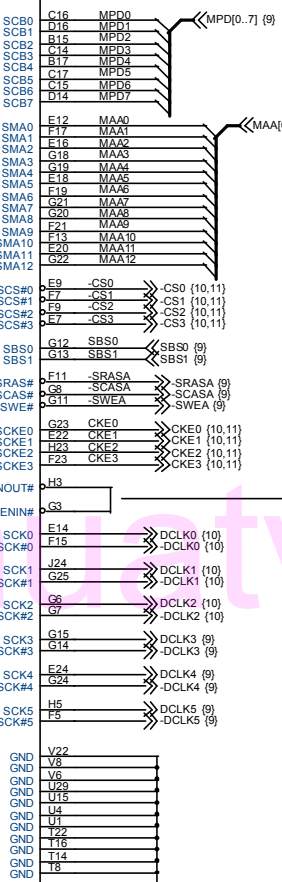


Title		
WILLIAMATE 478C		
Size	Document Number	Rev
Custom	GA-8IR533	1.0
Date:	Friday, May 17, 2002	Sheet 5 of 33



www.knuatvinh.com

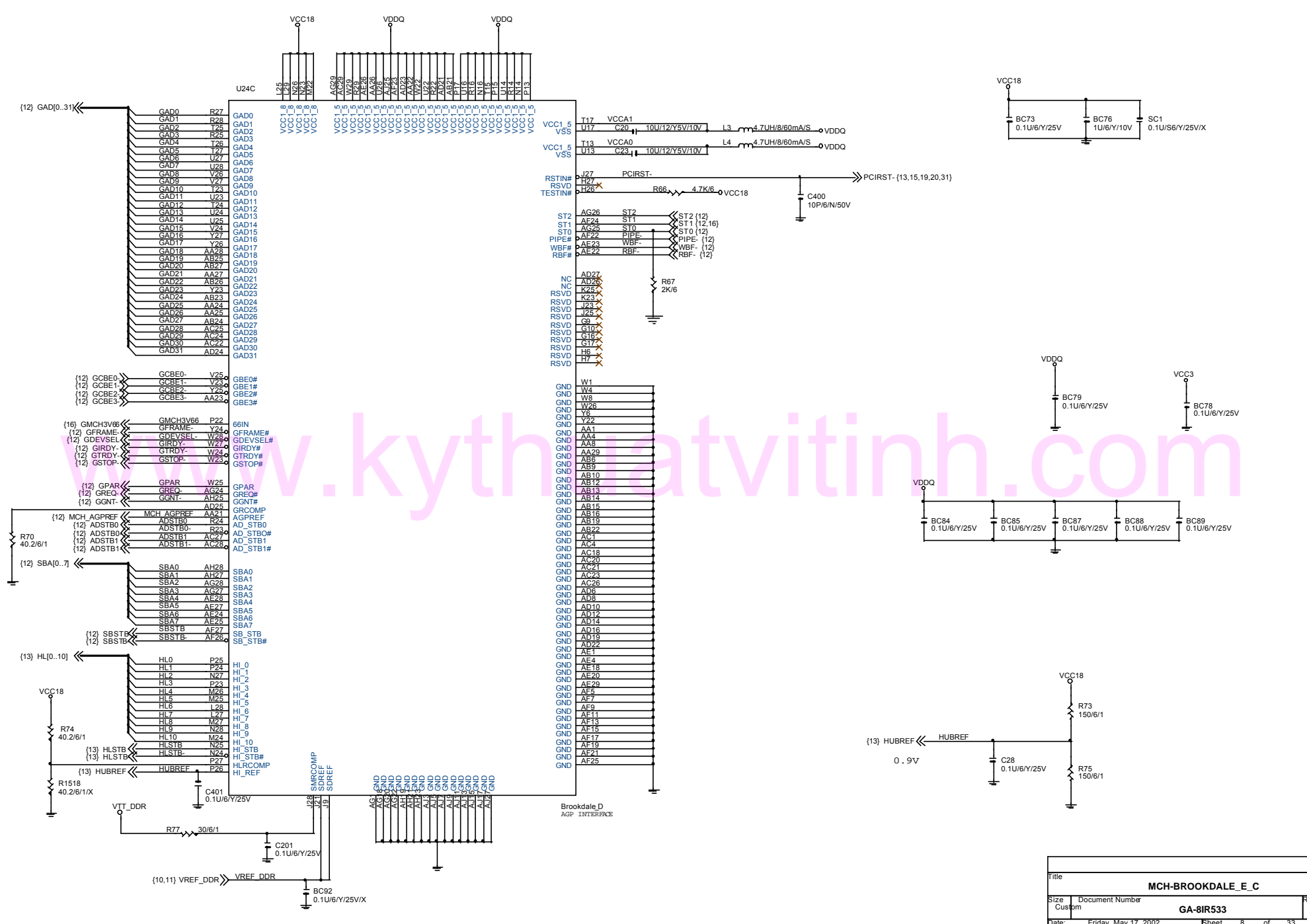
Title		
MCH-BROOKDALE_E_A		
Size	Document Number	Rev
Custom	GA-8IR533	1.0
Date:	Friday, May 17, 2002	Sheet 6 of 33



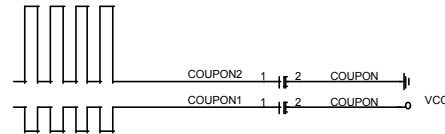
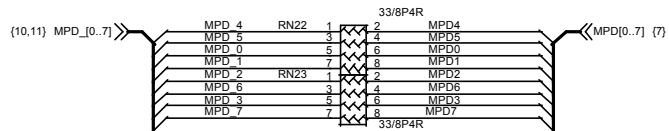
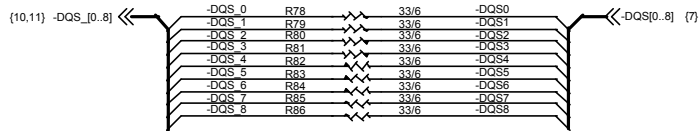
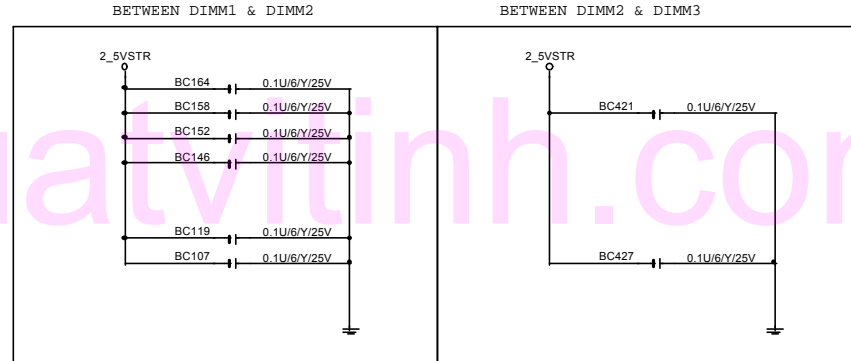
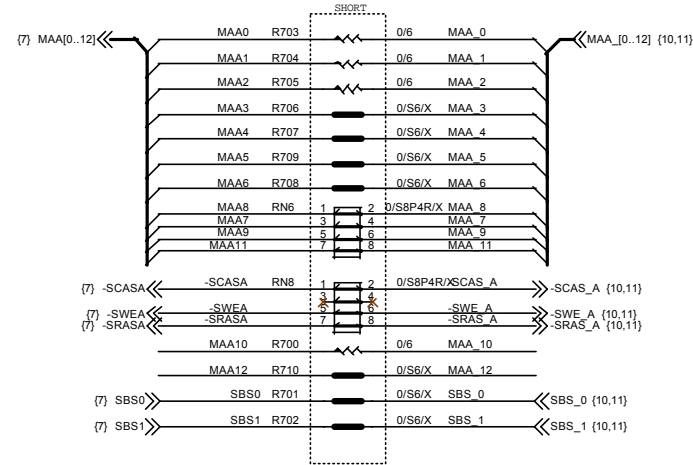
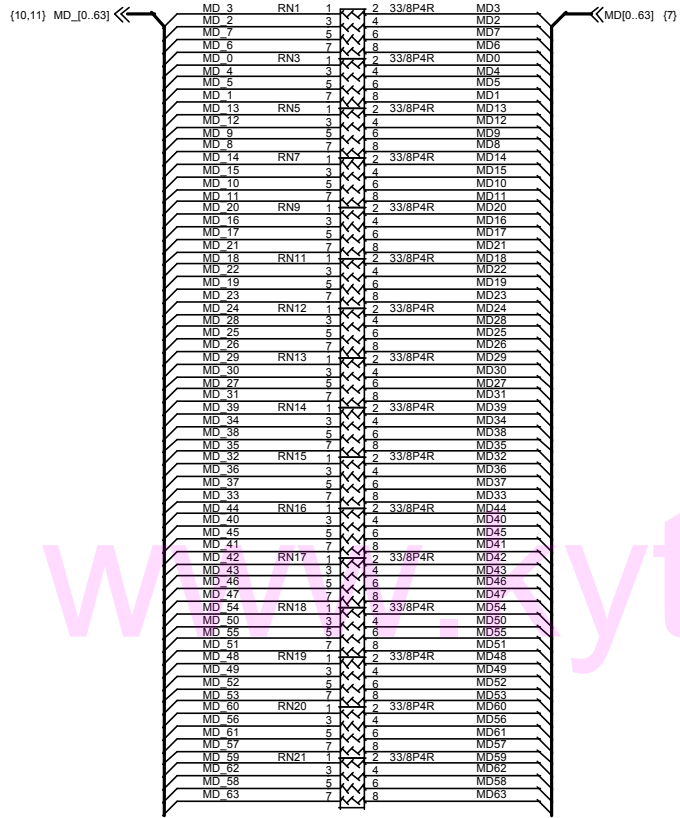
注意:DDR版要在 SOLDER SIDE LAY  
1INCH 長度 (5MIL)

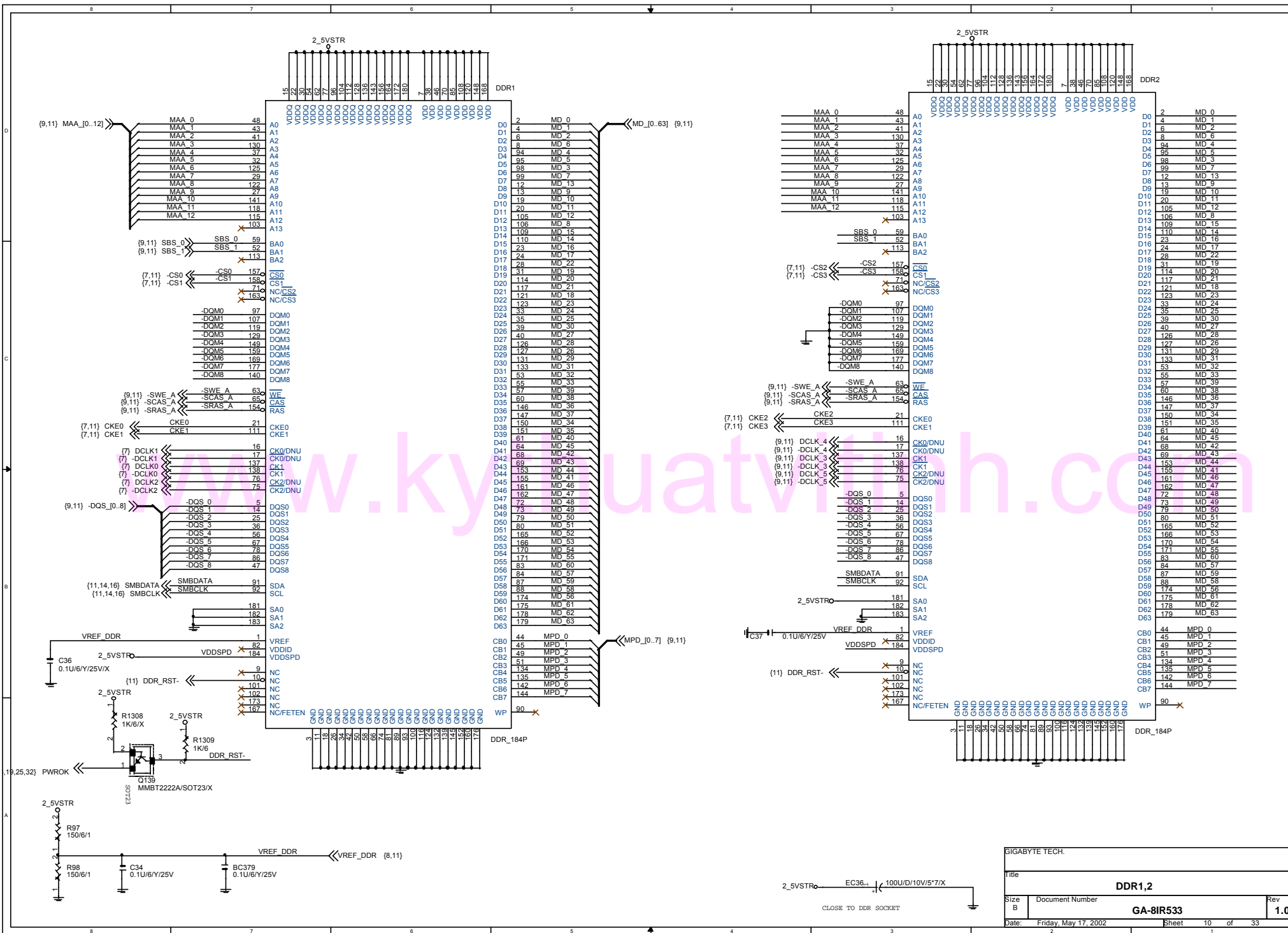
www.kything.com

Title		
MCH-BROOKDALE_E_B		
Size	Document Number	Rev
Custom	GA-8IR533	1.0
Date:	Friday, May 17, 2002	Sheet 7 of 33

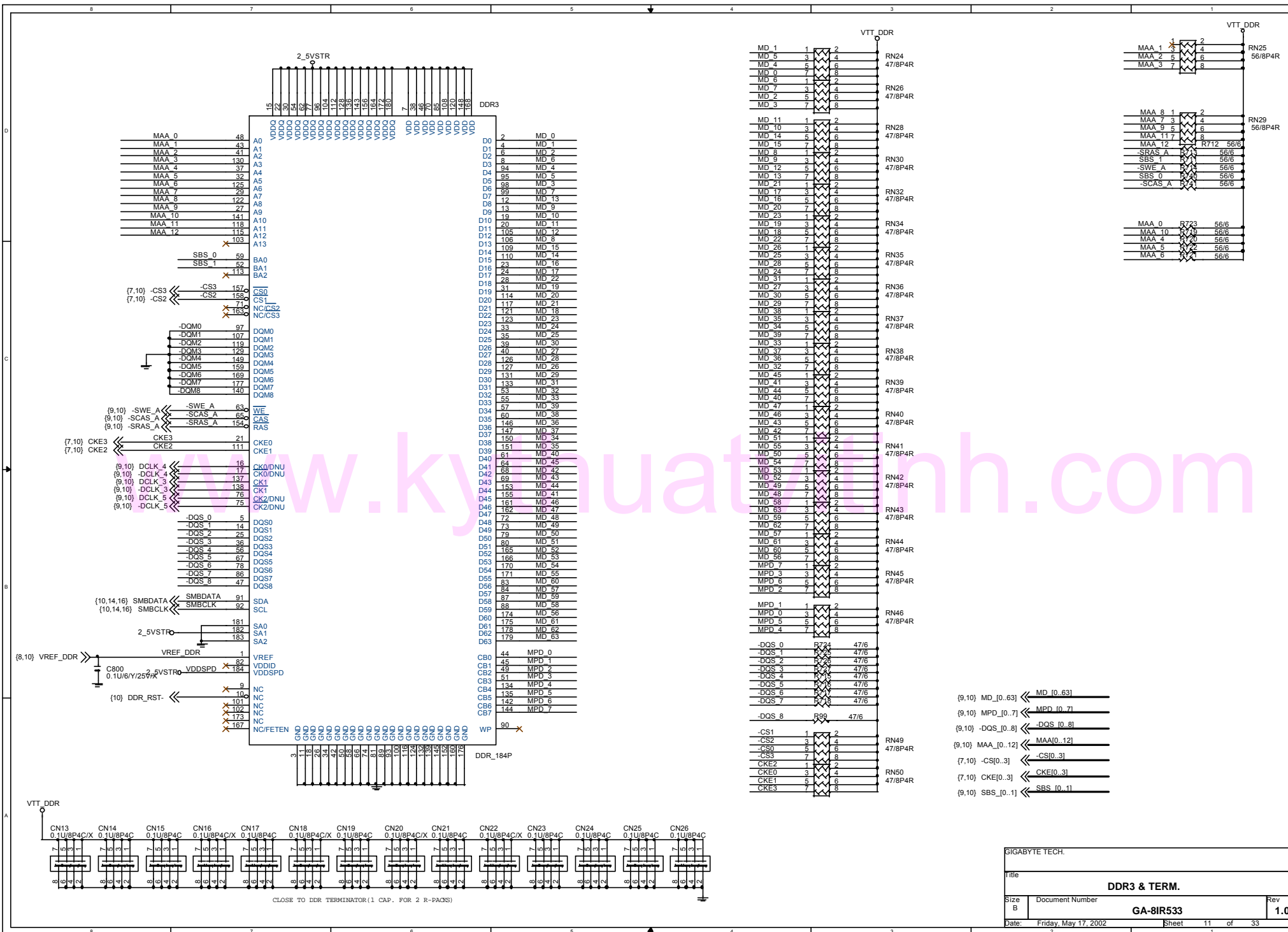


Title		
<b>MCH-BROOKDALE_E_C</b>		
Size	Document Number	Rev
Custom	<b>GA-8IR533</b>	<b>1.0</b>
Date:	Friday, May 17, 2002	Sheet 8 of 33





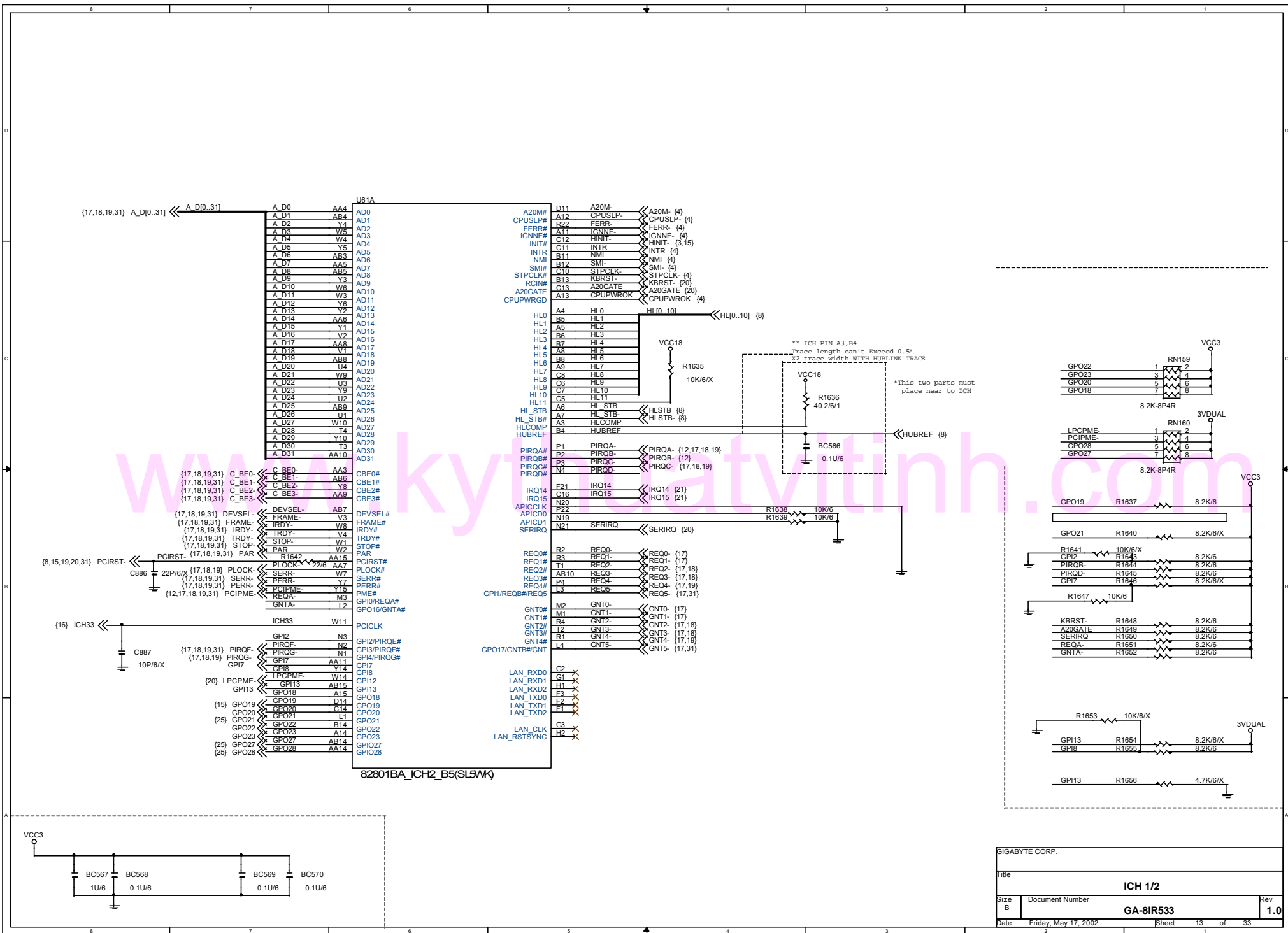
SIGABYTE TECH.		
Title		
<b>DDR1,2</b>		
Size	Document Number	Rev
B	<b>GA-B1R533</b>	<b>1.0</b>
Date:	Friday, May 17, 2002	Sheet 10 of 33

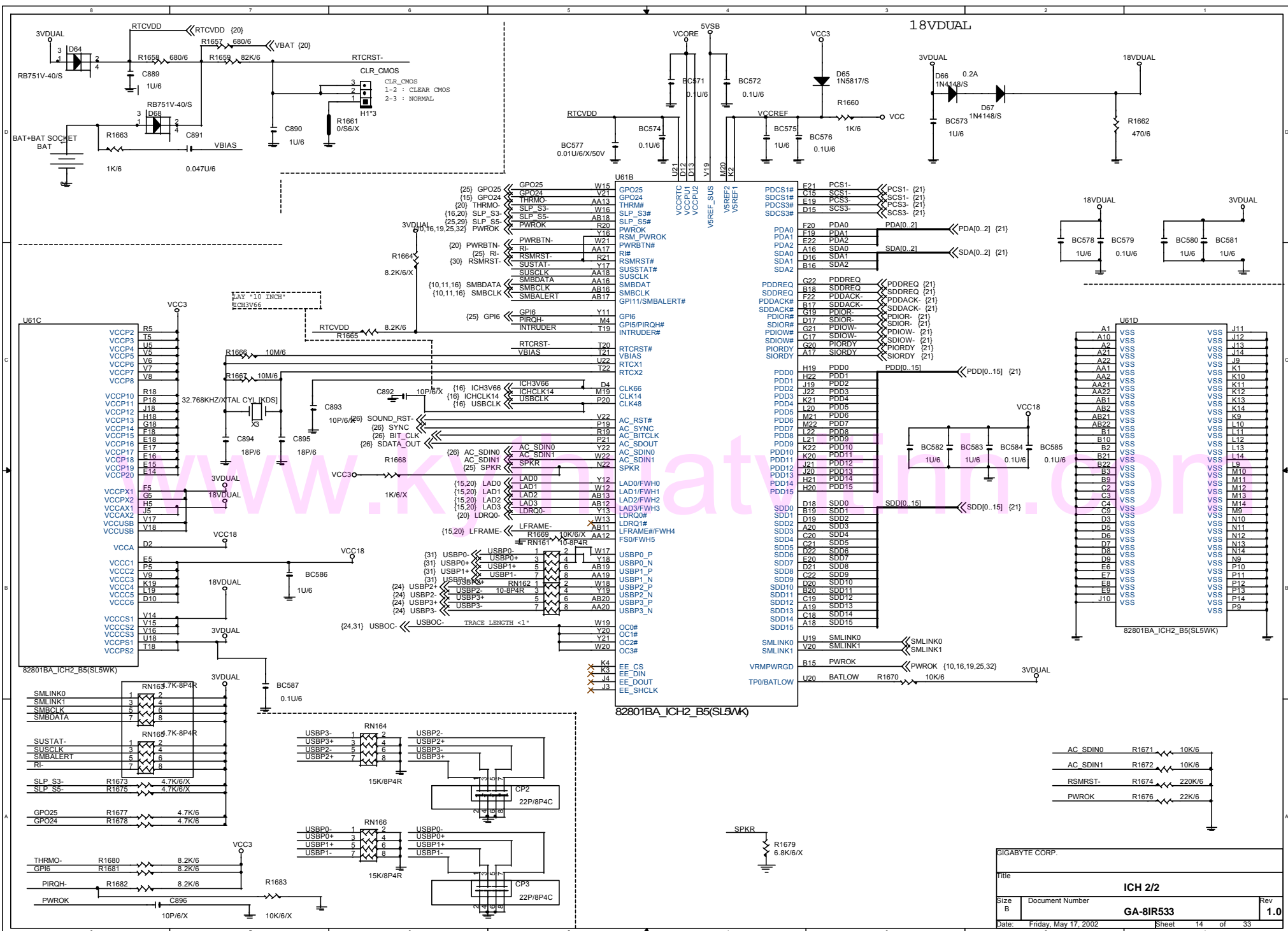


- (9,10) MD[0..63] << MD[0..63]
- (9,10) MPD[0..7] << MPD[0..7]
- (9,10) -DQS[0..8] << -DQS[0..8]
- (9,10) MAA[0..12] << MAA[0..12]
- (7,10) -CS[0..3] << -CS[0..3]
- (7,10) CKE[0..3] << CKE[0..3]
- (9,10) SBS[0..1] << SBS[0..1]

SIGABYTE TECH.		
Title		
<b>DDR3 &amp; TERM.</b>		
Size	Document Number	Rev
B	<b>GA-8IR533</b>	<b>1.0</b>
Date:	Friday, May 17, 2002	Sheet 11 of 33

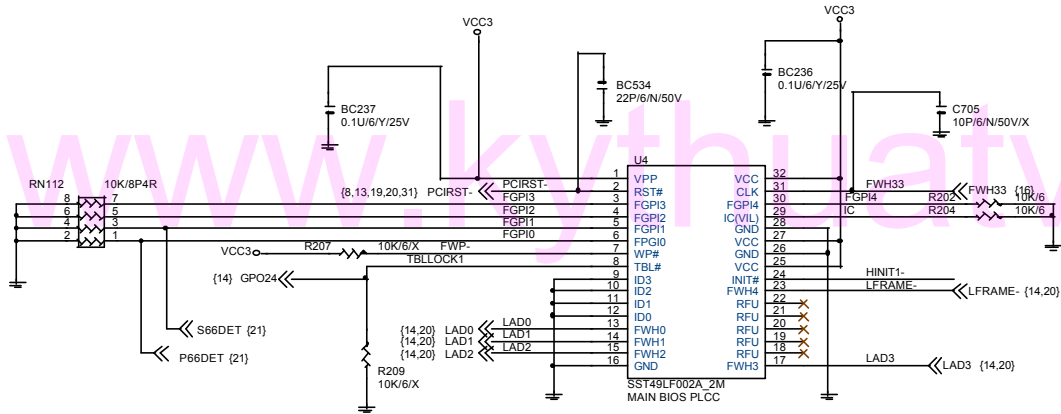
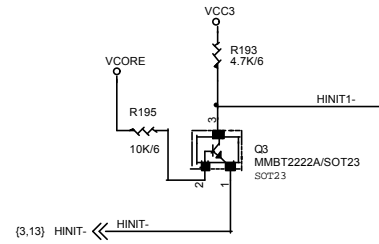






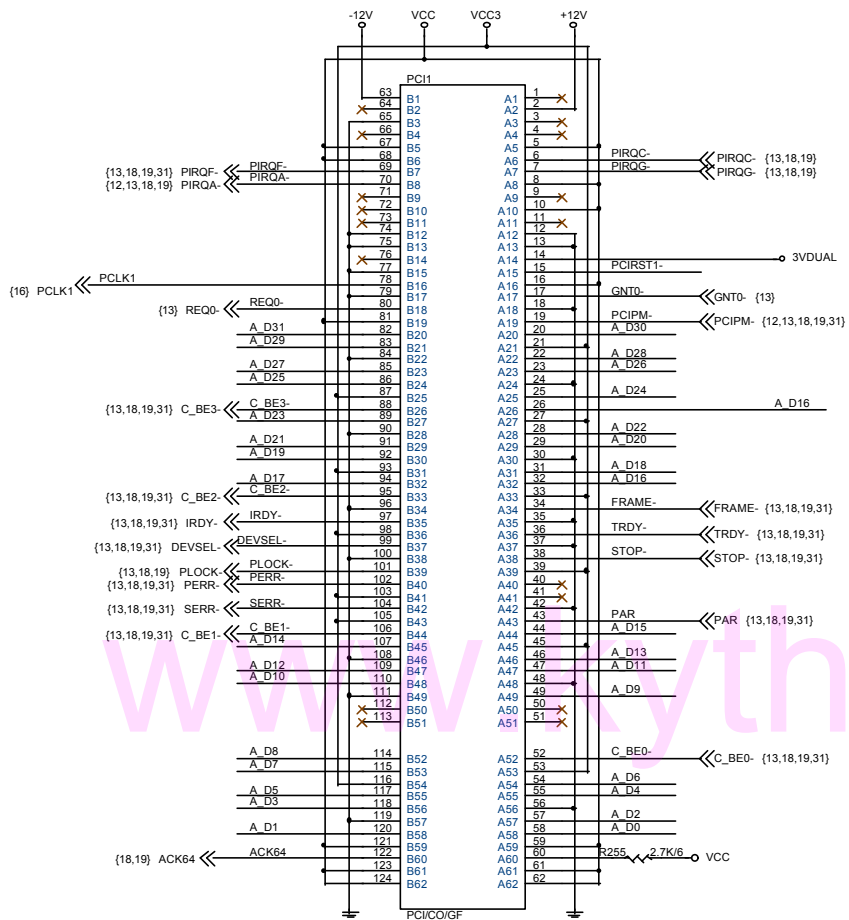


{13} GPO19 ← EPO19 R1263 4.7K/6 FWP-

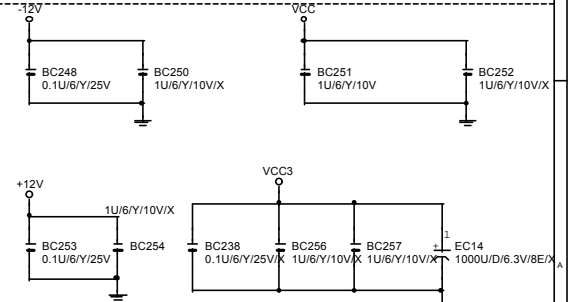
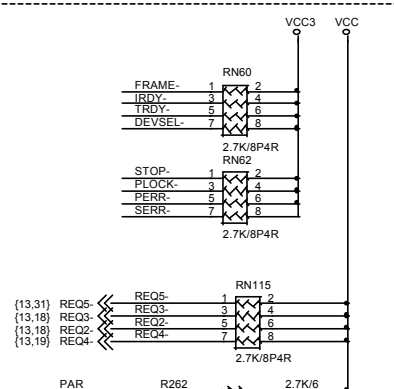
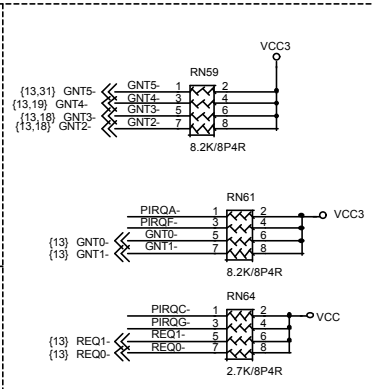
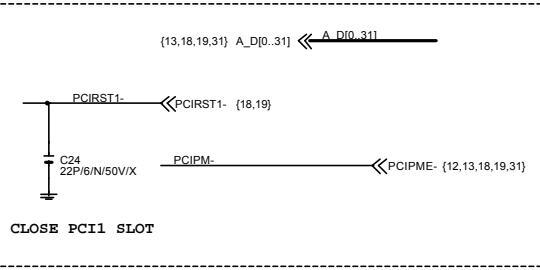
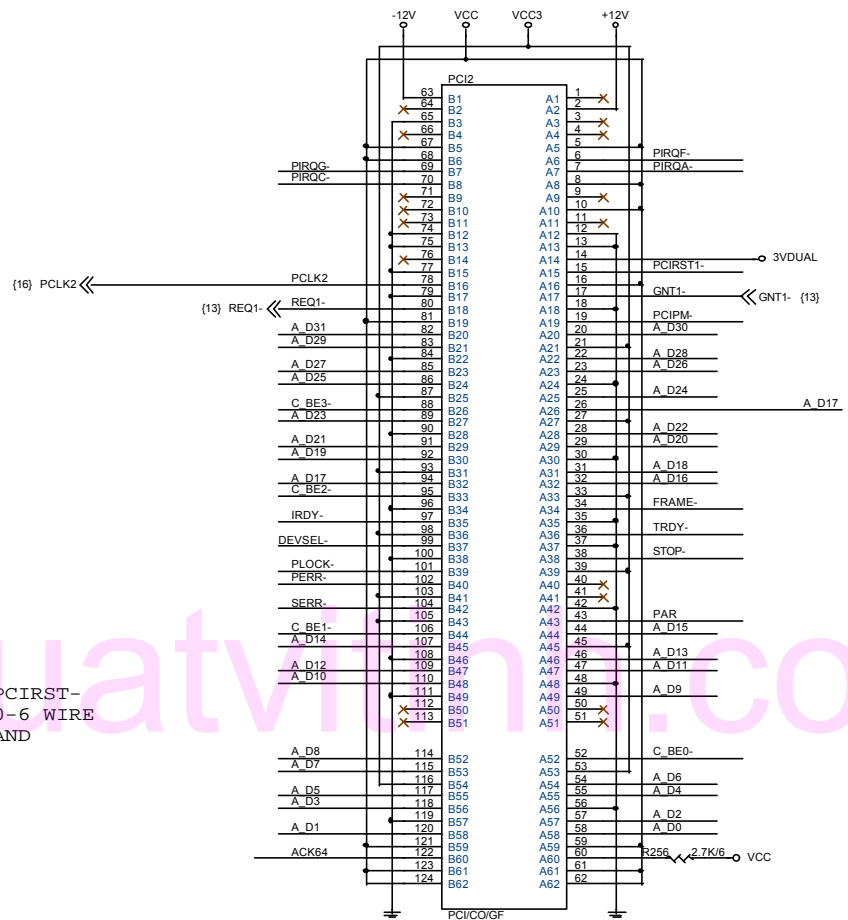


SIGABYTE CORP.		
Title		FWH
Size B	Document Number	Rev
	GA-8IR533	1.0
Date:	Friday, May 17, 2002	Sheet 15 of 33

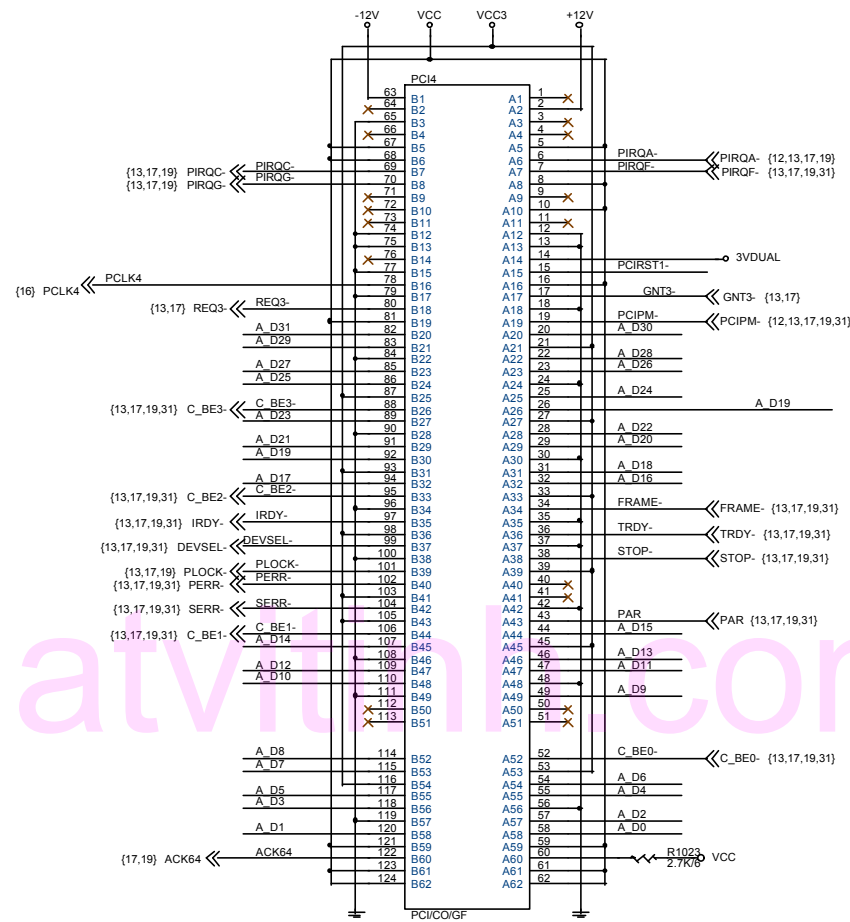
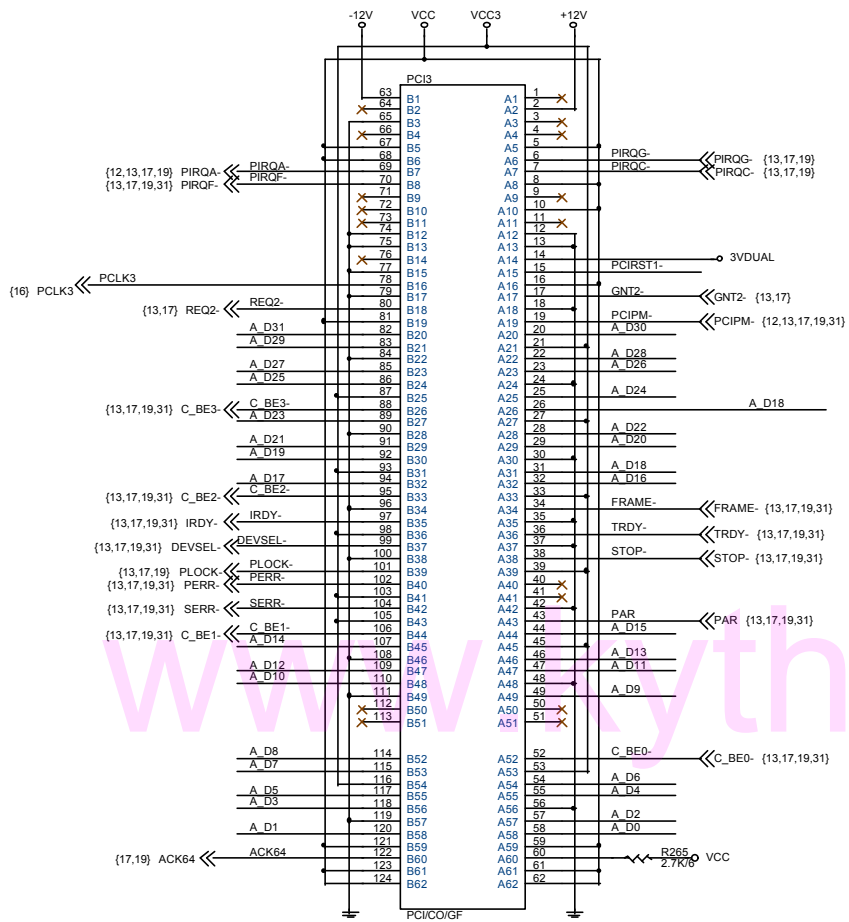




PCIRST-0-6 WIRE AND

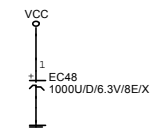


SIGABYTE CORP.		
Title: PCI SLOT 1/2		
Size: B	Document Number: GA-8IR533	Rev: 1.0
Date: Friday, May 17, 2002	Sheet: 17	of 33

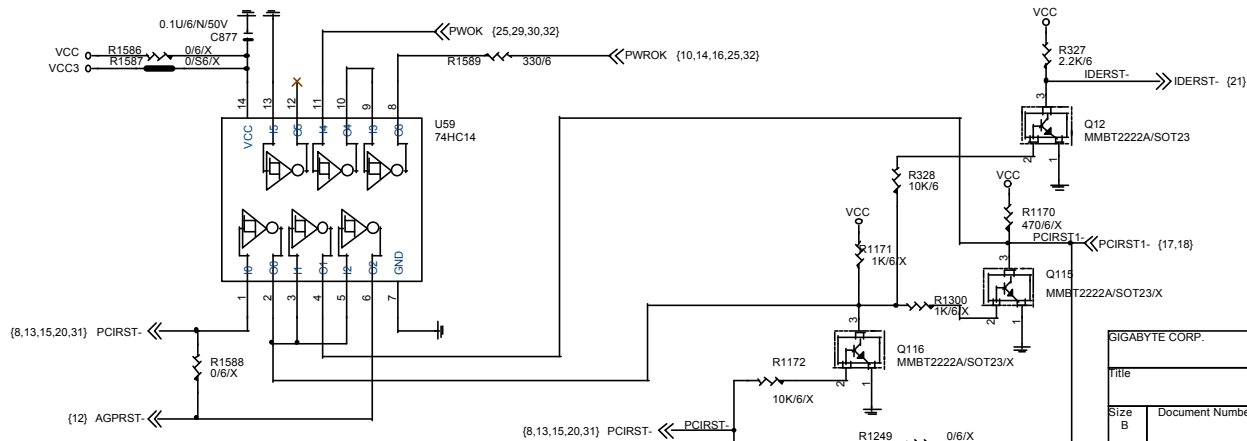
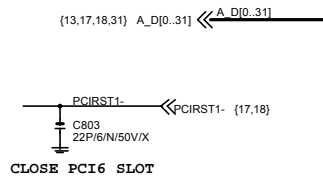
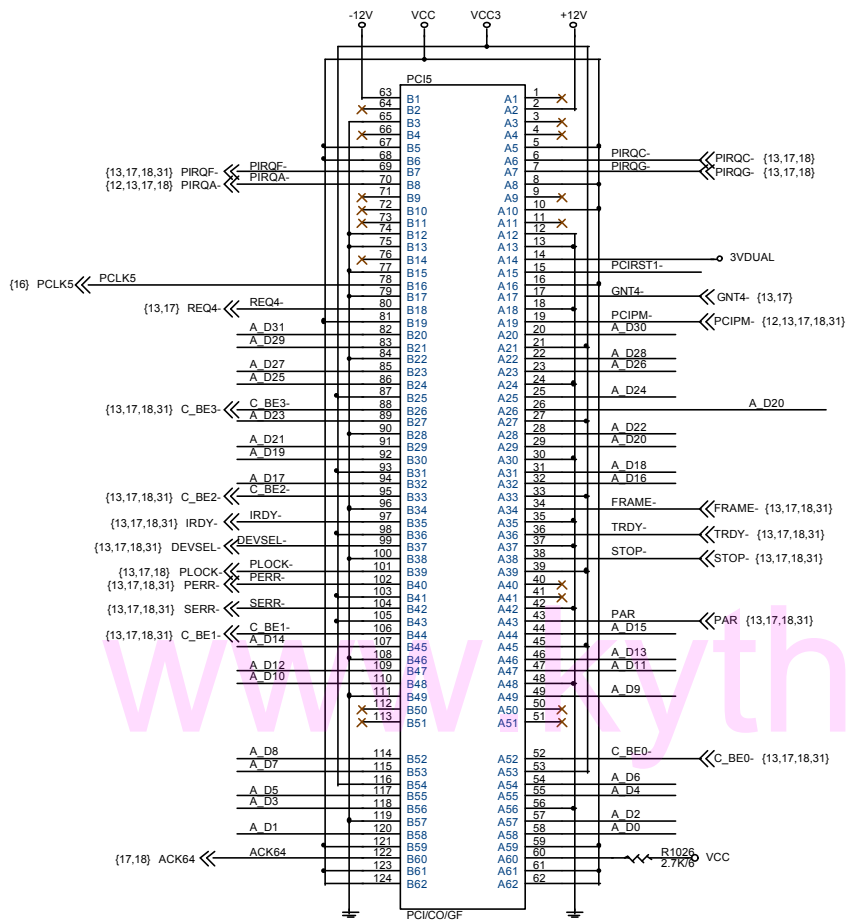


{13,17,19,31} A\_D0..311 A D0..311

PCIRST1- {17,19} PCIRST1- {17,19}

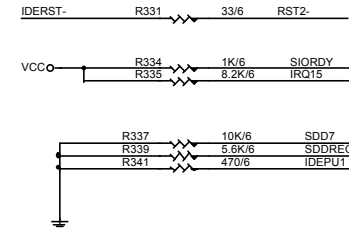
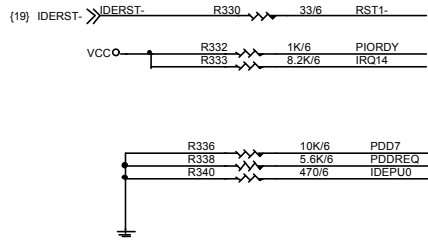
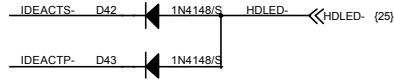


SIGABYTE CORP.		
Title <b>PCI SLOT 3_4</b>		
Size B	Document Number <b>GA-8IR533</b>	Rev <b>1.0</b>
Date: Friday, May 17, 2002	Sheet 18	of 33



SIGABYTE CORP.		
Title <b>PCI SLOT 5</b>		
Size B	Document Number <b>GA-8IR533</b>	Rev <b>1.0</b>
Date: Friday, May 17, 2002	Sheet 19	of 33

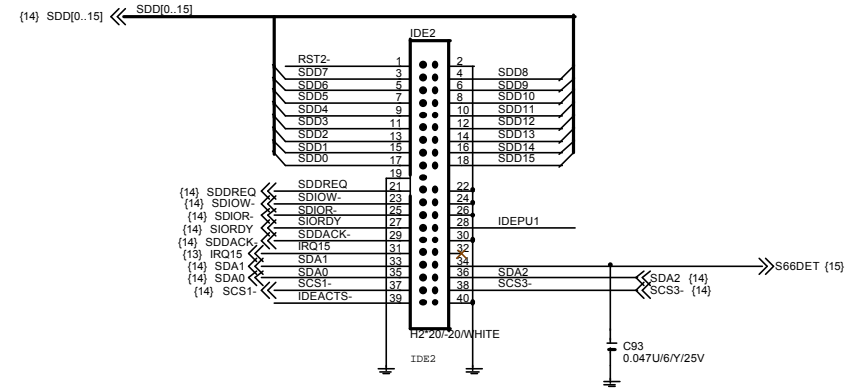
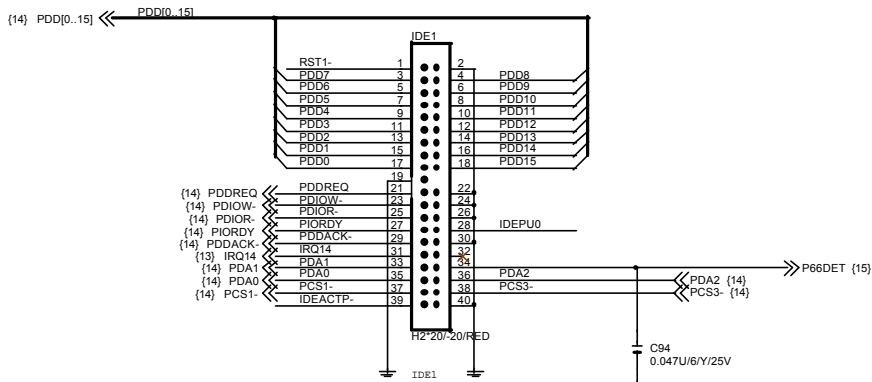




www.kythuatchinh.com

PRIMARY IDE CONNECTOR

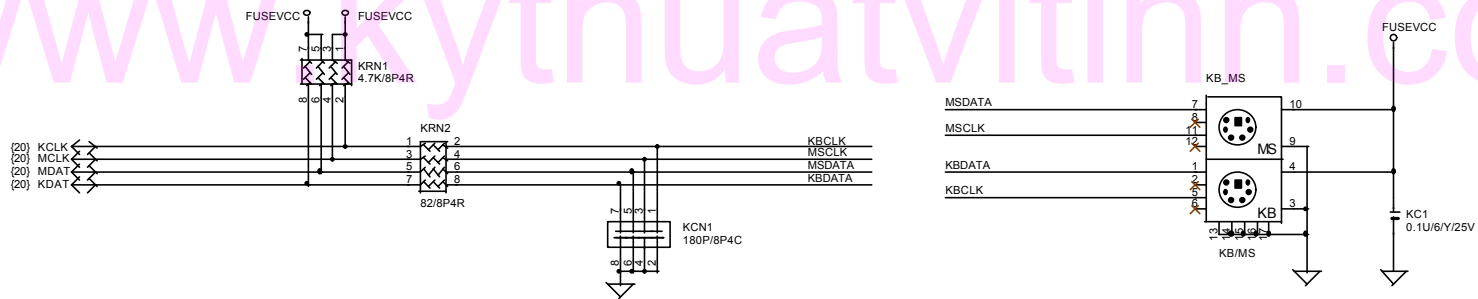
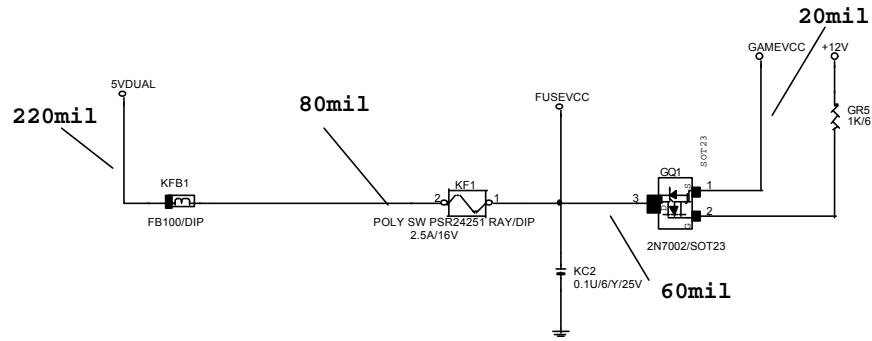
SECONDARY IDE CONNECTOR



BIOS:CABLE DETECT AND DEVICE DETECT

SIGABYTE CORP.		
Title <b>IDE CONNECTOR</b>		
Size B	Document Number <b>GA-8IR533</b>	Rev <b>1.0</b>
Date: Friday, May 17, 2002	Sheet 21	of 33

模組化線路

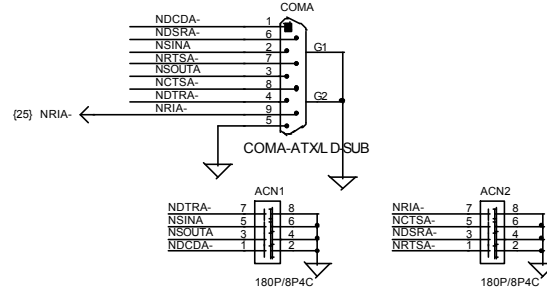
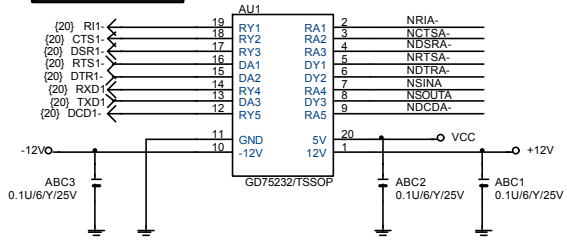


www.kythuatvithinh.com

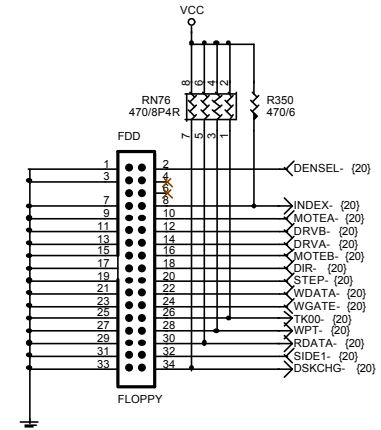
SIGABYTE CORP.		
Title		
<b>KB &amp; PS2 MOUSE &amp; IR</b>		
Size B	Document Number <b>GA-8IR533</b>	Rev <b>1.0</b>
Date:	Friday, May 17, 2002	Sheet 22 of 33

COMA

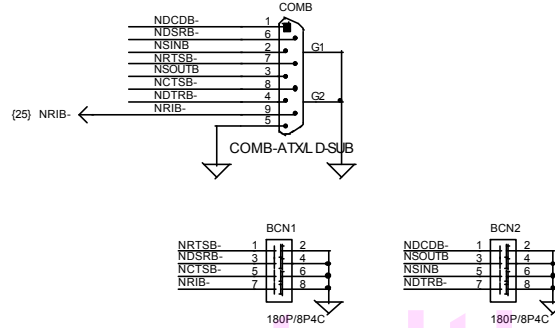
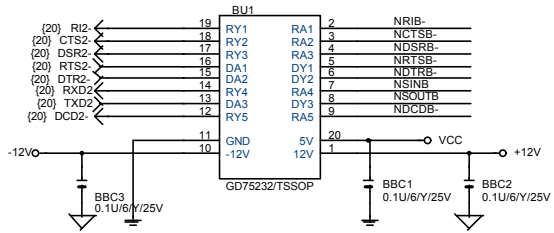
模組化線路



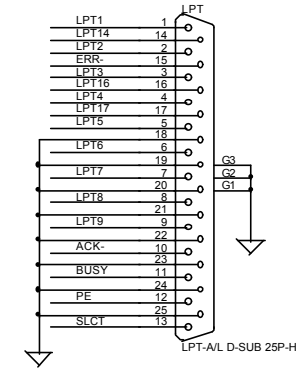
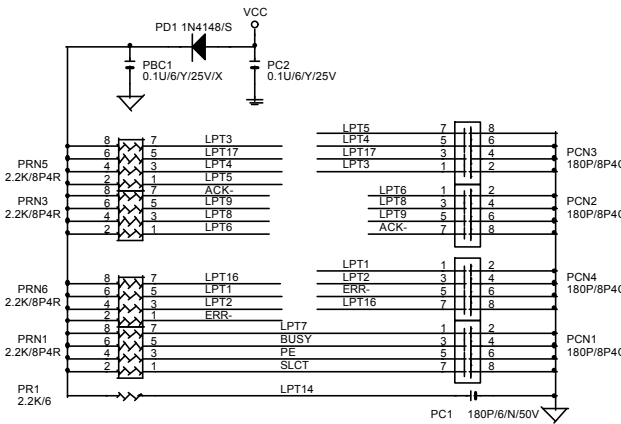
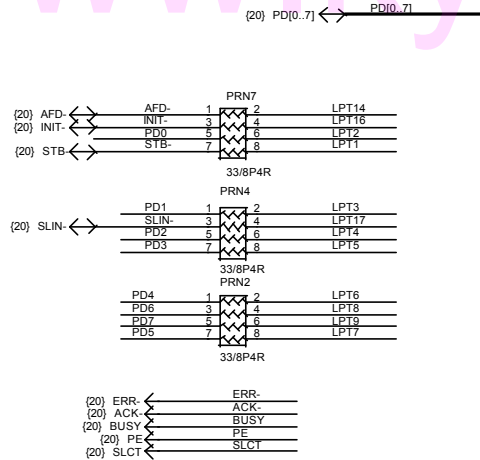
FLOPPY



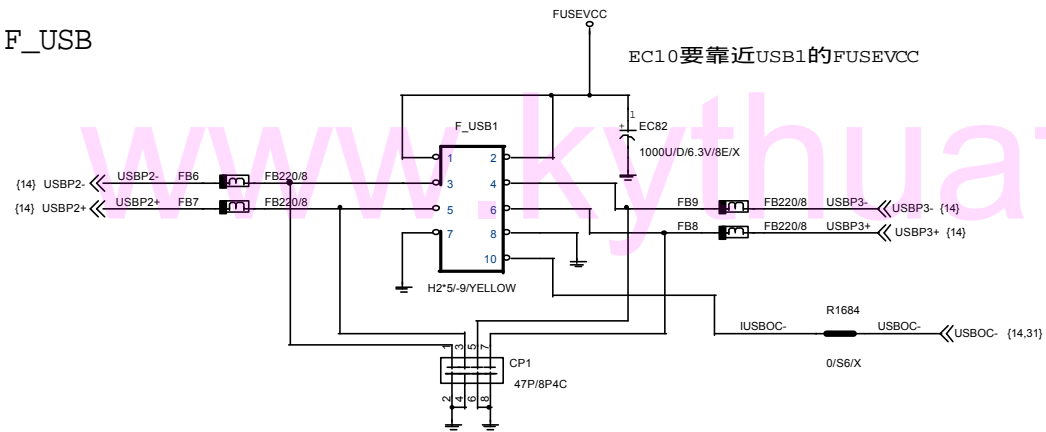
COMB



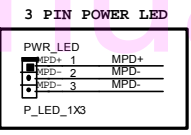
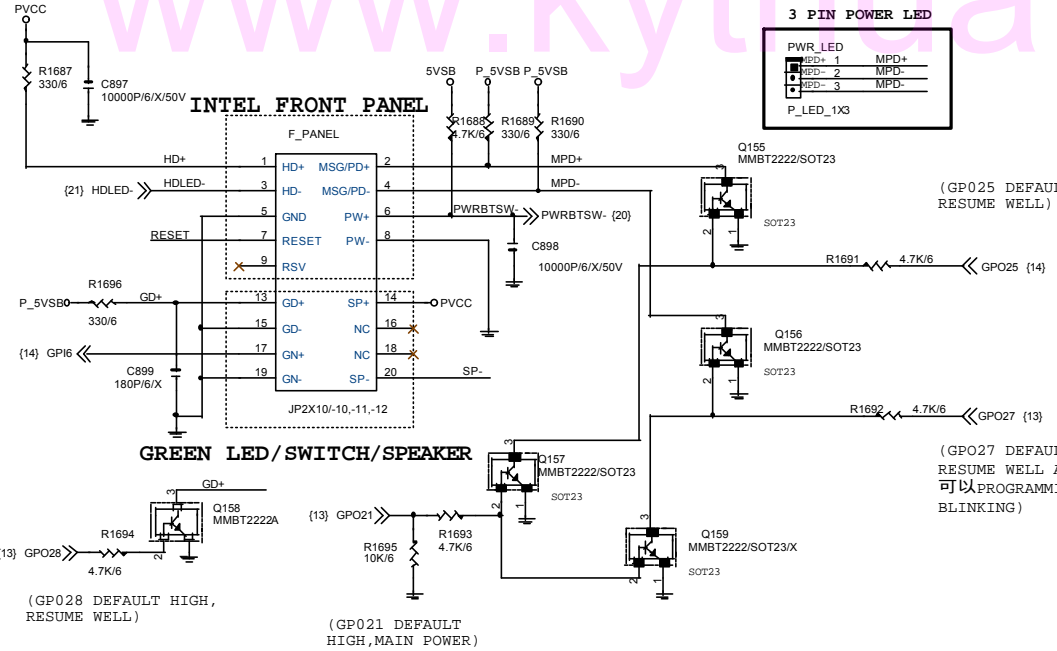
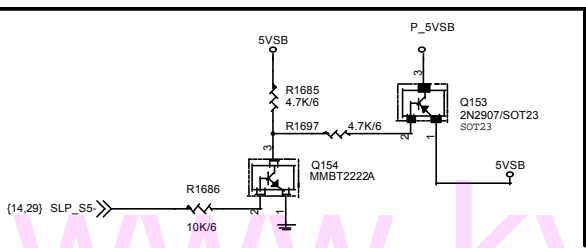
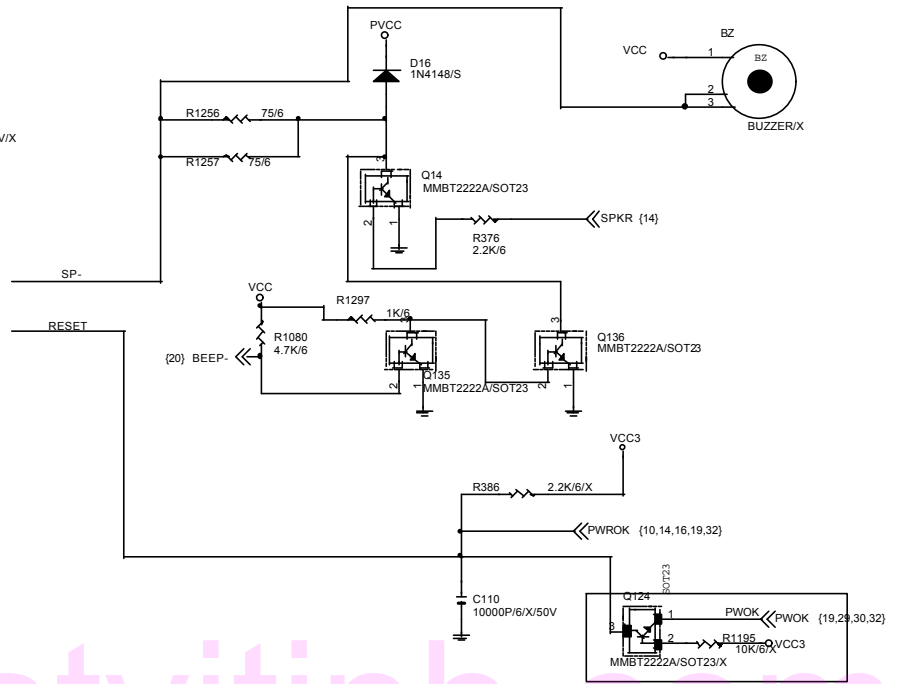
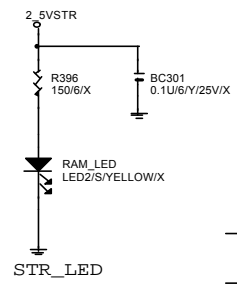
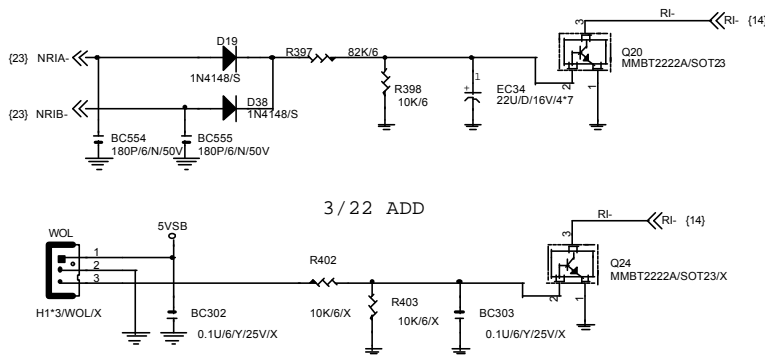
PRT PORT



F\_USB



SIGABYTE			
Title ICH USB+LAN PORT			
Size B	Document Number GA-8IR533	Rev 1.0	
Date: Friday, May 17, 2002	Sheet 24	of 33	



States for green LED

LED States	ACPI States	GPO28
ON	S1,S3	0
OFF	S0,S5	1

NO1 GPO35 只需在S1 PROGRAMMING LOW

States for a single-color power LED

LED States	ACPI States	GPO25	GPO27	GPO21
OFF	S1,S3,S5	1	1	NO1
Steady Green	S0	0	1	0
Blinking Green	S0(message waiting)	0	B	0

States for a dual-color power LED

LED States	ACPI States	GPO25	GPO27	GPO21
OFF	S5	1	1	X
Steady Green	S0	0	1	0
Blinking Green	S0(message waiting)	0	B	0
Steady Yellow	S1,S3	1	0	NO1
Blinking Yellow	S1,S3(message waiting)	1	B	NO1

模組化線路

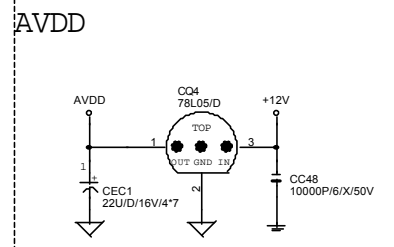
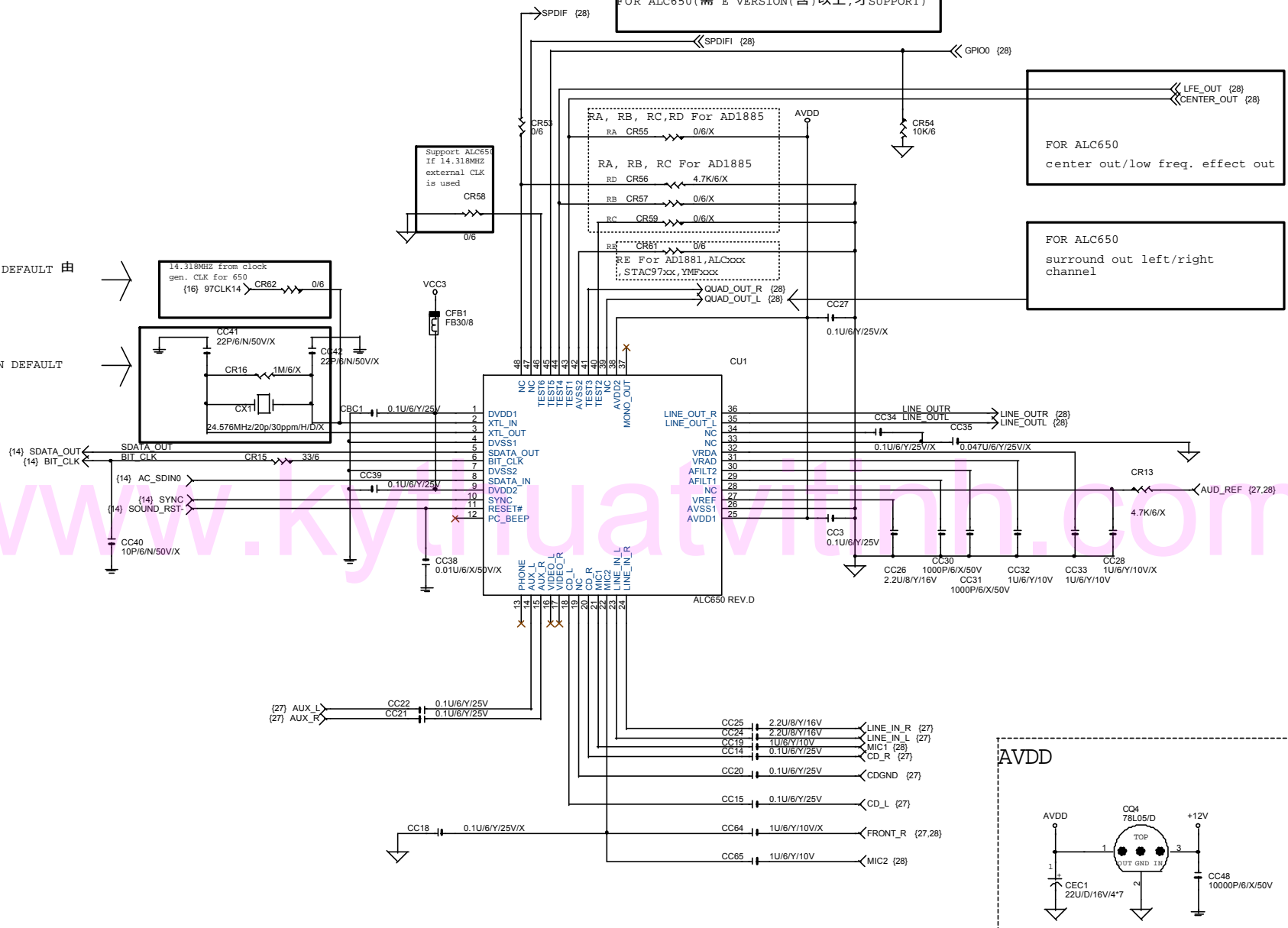
FOR ALC650 (需 E VERSION (含) 以上, 才 SUPPORT)

FOR ALC650  
center out/low freq. effect out

FOR ALC650  
surround out left/right  
channel

FOR 650 DESIGN DEFAULT 由  
CLOCK GEN來

FOR 650 DESIGN DEFAULT  
不上 CRYSTAL



SIGABYTE CORP.

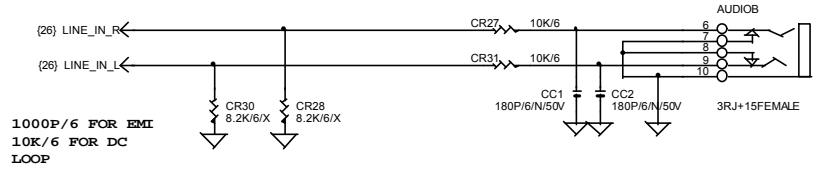
title **AC97**

Size B	Document Number	Rev
	<b>GA-8IR533</b>	<b>1.0</b>

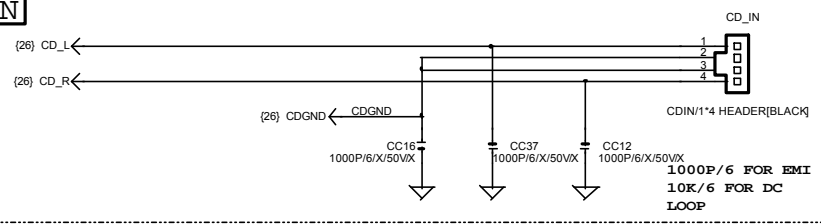
Date: Friday, May 17, 2002 Sheet 26 of 33

**LINE-IN**

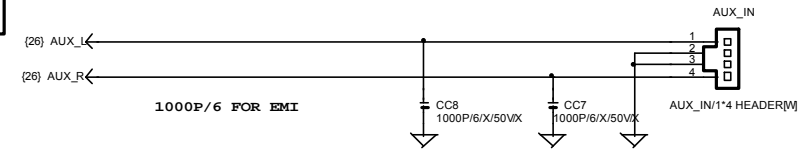
**模組化線路**



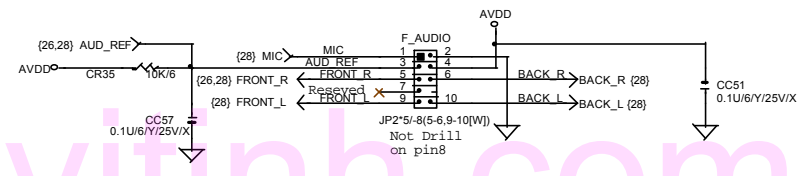
**CDIN**



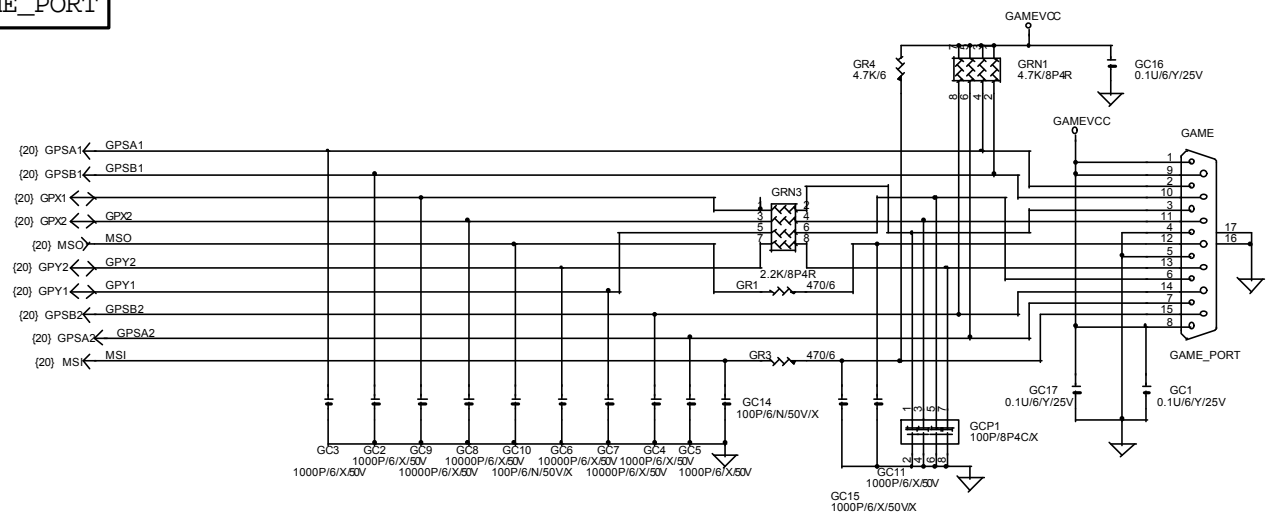
**AUX\_IN**



**INTEL FRONT AUDIO**



**GAME\_PORT**

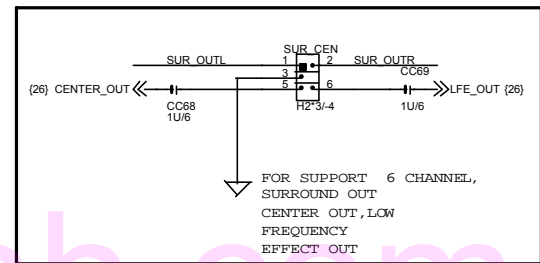
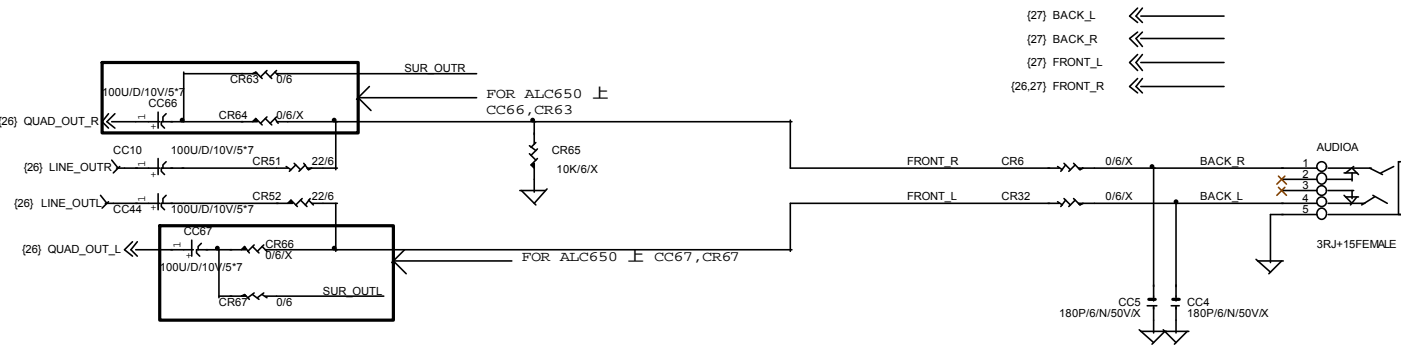


SIGABYTE CORP.		
Title		
PHONE JACK, GAME PORT		
Size	Document Number	Rev
Custom	GA-8IR533	1.0
Date:	Fridav, May 17, 2002	Sheet 27 of 34

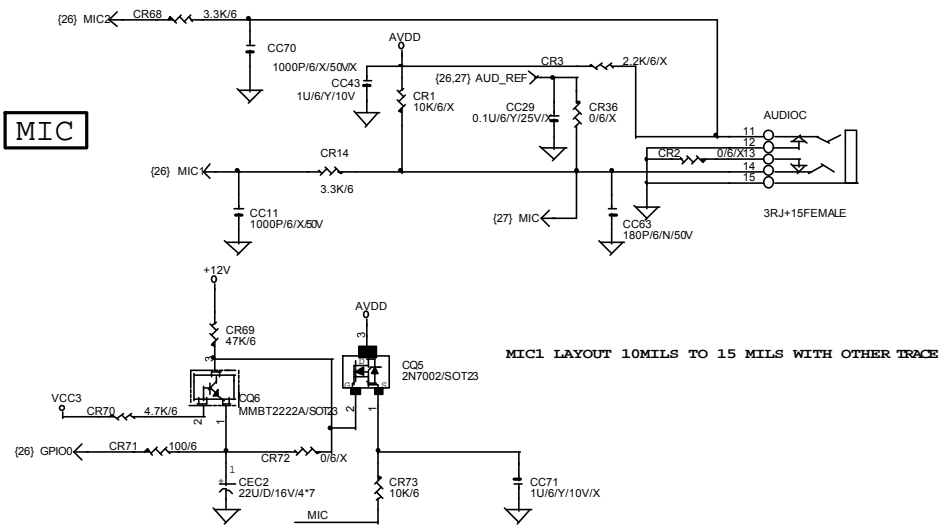
www.kythuatvithinh.com

模組化線路

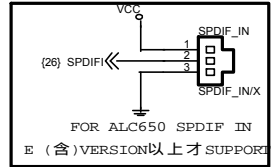
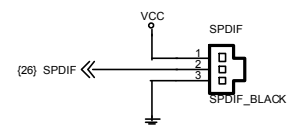
LINE OUT



MIC

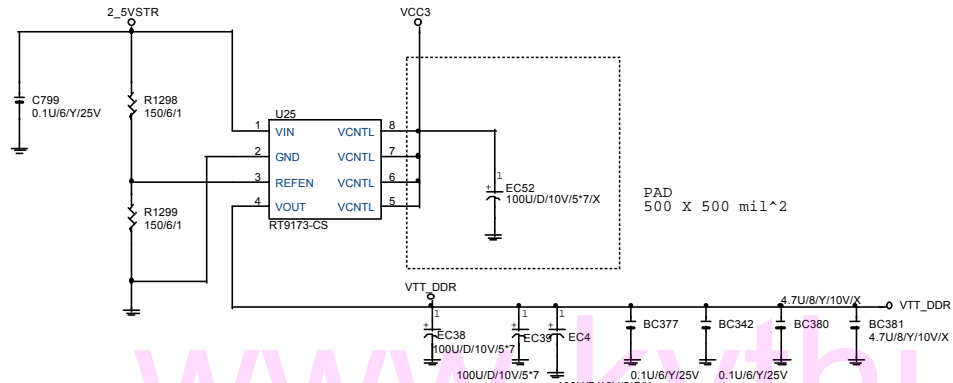


SPDIF

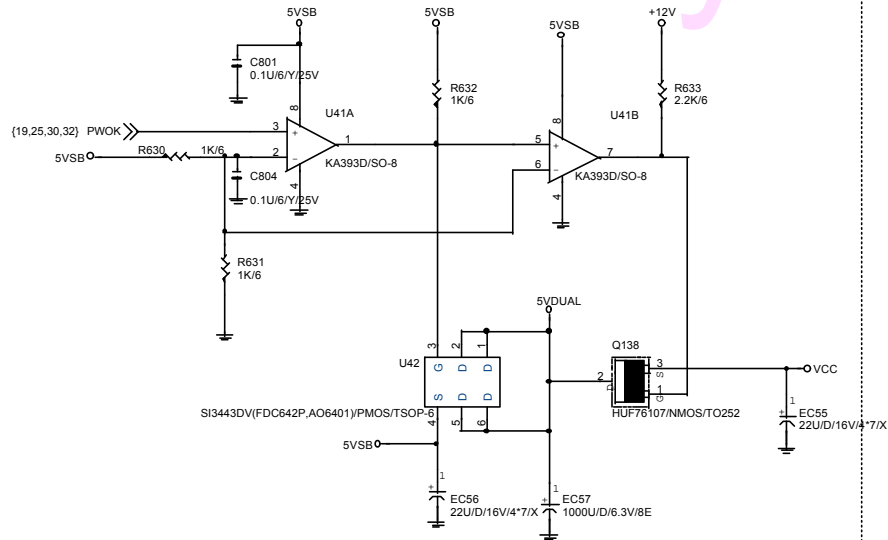


SIGABYTE CORP.			
Title			
PHONE JACK, GAME PORT			
Size	Document Number	Rev	
Custom	GA-8IR533	1.0	
Date:	Friday, May 17, 2002	Sheet	28 of 33

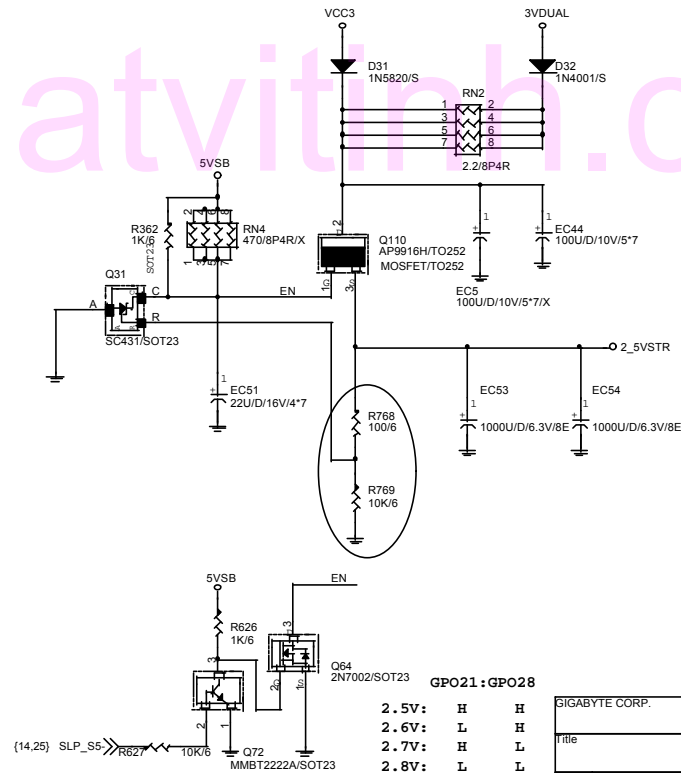
1.25V VTT\_DDR LINEAR SOLUTION



PAD  
500 X 500 mil<sup>2</sup>



5VDUAL CIRCUIT

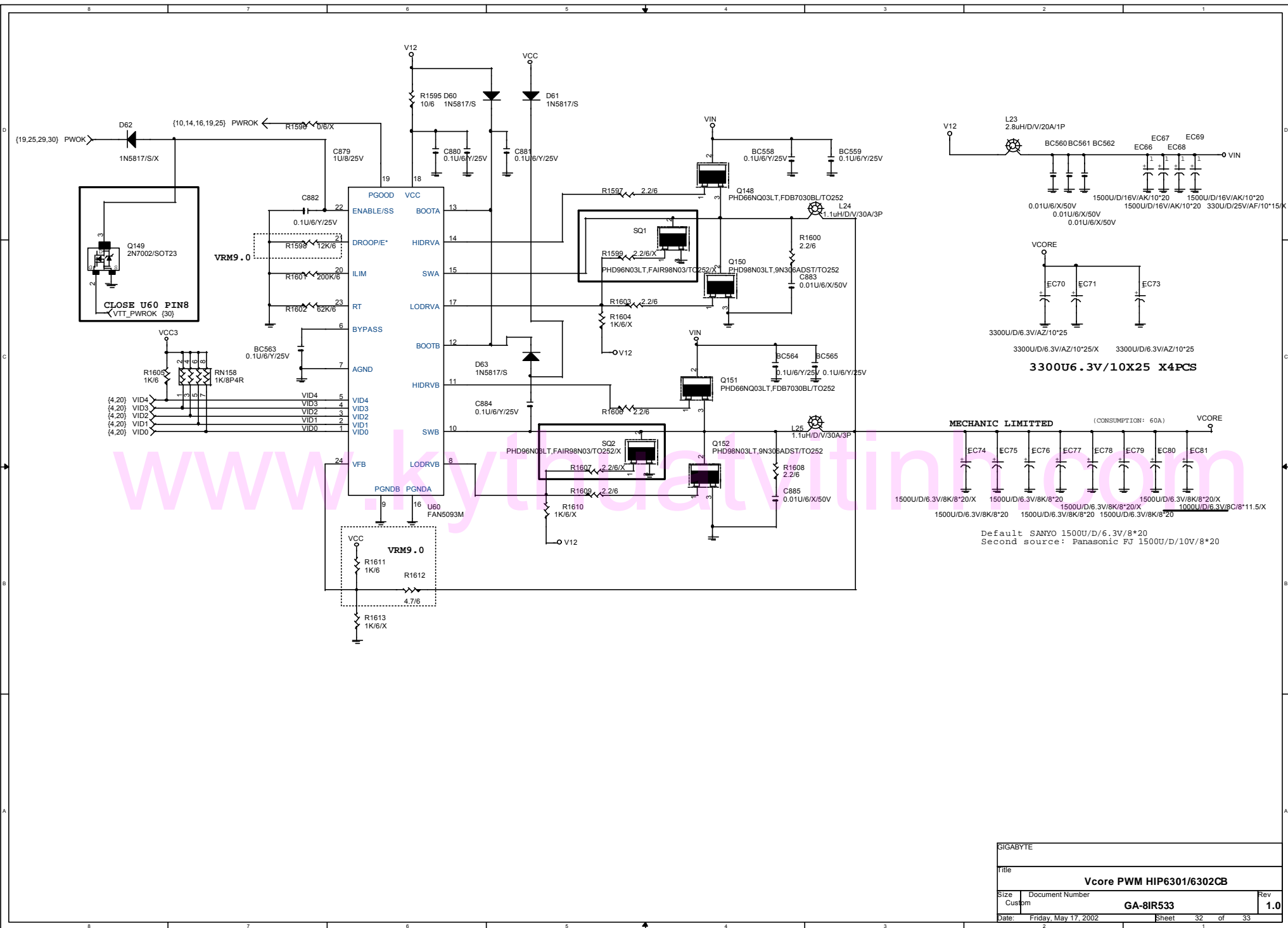


GPO21:GPO28

2.5V:	H	H
2.6V:	L	L
2.7V:	H	H
2.8V:	L	L

SIGNAL BYTE CORP.		
Title		
<b>DDR POWER</b>		
Size	Document Number	Rev
B	<b>GA-8IR533</b>	<b>1.0</b>
Date:	Friday, May 17, 2002	Sheet 29 of 33





SIGABYTE			
Title			
<b>Vcore PWM HIP6301/6302CB</b>			
Size	Document Number	Rev	
Custom	<b>GA-8R533</b>	<b>1.0</b>	
Date:	Friday, May 17, 2002	Sheet	32 of 33

# GIGABYTE GA-8IR533 GPIO LIST





Revision 1.0

SHEET TITLE

GPI					
GPI0/REQA-	NA	PULL 8.2K TO VCC3			
GPI1/REQ5-		PULL 2.7K TO VCC3			
GPI2	ID	PULL 8.2K TO VCC3 (default)			
GPI3/PIRQF-		PULL 8.2K TO VCC3			
GPI4/PIRQG-		PULL 8.2K TO VCC3			
GPI5/PIRQH-	ID	PULL 8.2K TO VCC3 (default)			
GPI6		PULL 8.2K TO VCC3(GREEN BUTTON)			
GPI7		PULL DOWN 10K TO GND (DETECT DUAL BIOS)			
GPI8	ID	PULL 8.2K TO VCC3 (default)			
GPI9	NA	NOT IMPLEMENTED			
GPI10	NA	NOT IMPLEMENTED			
GPI11		PULL 4.7K TO 3VDUAL (SMBALERT)			
GPI12		PULL 8.2K TO 3VDUAL (PME-)			
GPI13		CNR_PRIMARY			
GPI14	NA	NOT IMPLEMENTED			
GPI15	NA	NOT IMPLEMENTED			
MODEL		GPI2	GPI5	GPI8	
8IEXP	ID	H	H	H	
8IEX	ID	H	H	L	
SOUND		ENABLE	PCI_F0	CLK_GEN	
LAN		ENABLE	PCI_F0	CLK_GEN	

SHEET TITLE

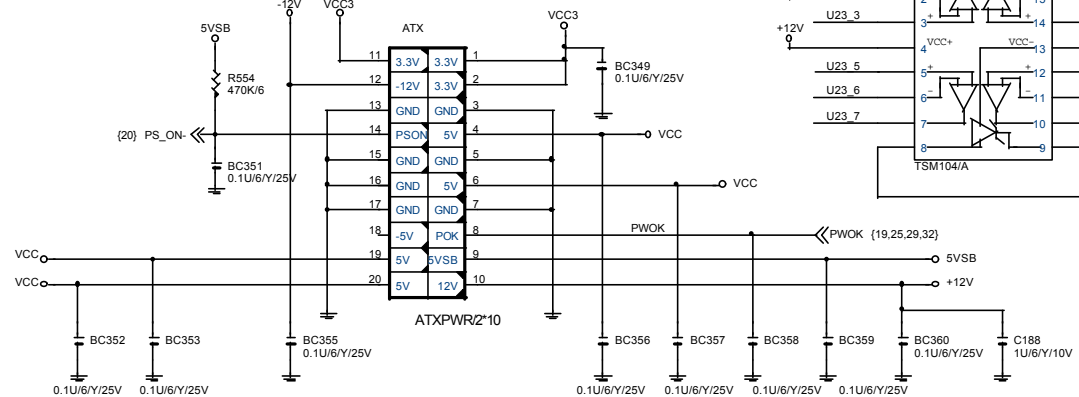
GPO			
GPO16	NA	PULL 8.2K TO VCC3(CAN'T PULL DOWN )因為會decode bios address 不正確:FF	
GPO17		PULL 8.2K TO VCC3 (GNT5-)	
GPO18	NA	PULL 8.2K TO VCC3 此OUTPUT 會TOGGLE,(在開機時),BIOS POST OK	
GPO19		PULL 8.2K TO VCC3 (DUAL BIOS )	
GPO20		PULL 8.2K TO VCC3 (DUAL BIOS )	
GPO21		PULL 8.2K TO VCC3 (DIMM OVER VOLTAGE )	
GPO22		PULL 8.2K TO VCC3 (AGP OVER VOLTAGE )	
GPO23		PULL 8.2K TO VCC3 (AGP OVER VOLTAGE )	
GPO24		PULL 1K TO 3VDUAL (TOP BLOCK)	
GPO25		PULL 4.7K TO 3VDUAL (BIOS WRITE PROTECT)	
GPO26		NOT IMPLEMENTED	
GPO27		PULL 8.2K TO 3VDUAL (LAN EN/DIS )	
GPO28		PULL 8.2K TO 3VDUAL (DIMM OVER VOLTAGE )	
GPO32		PULL 8.2K TO 3VDUAL (CPU OVER VOLTAGE )	

	COMPONENT SIDE (0.5 oz. Copper)
	VCC SIDE (1 oz. Copper)
	GND SIDE (1 oz. Copper)
	SOLDER SIDE (0.5 oz. Copper)

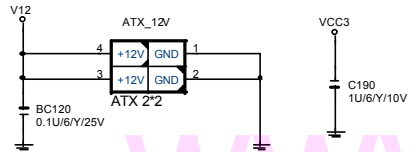
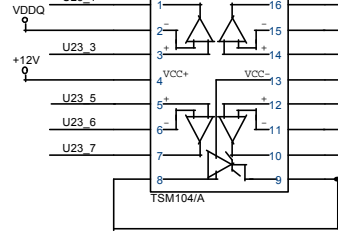
GIGABYTE			
Title GPIO LIST			
Size	Document Number	Rev	
Custom	GA-8IR533	1.0	
Date:	Friday, May 17, 2002	Sheet	33 of 33



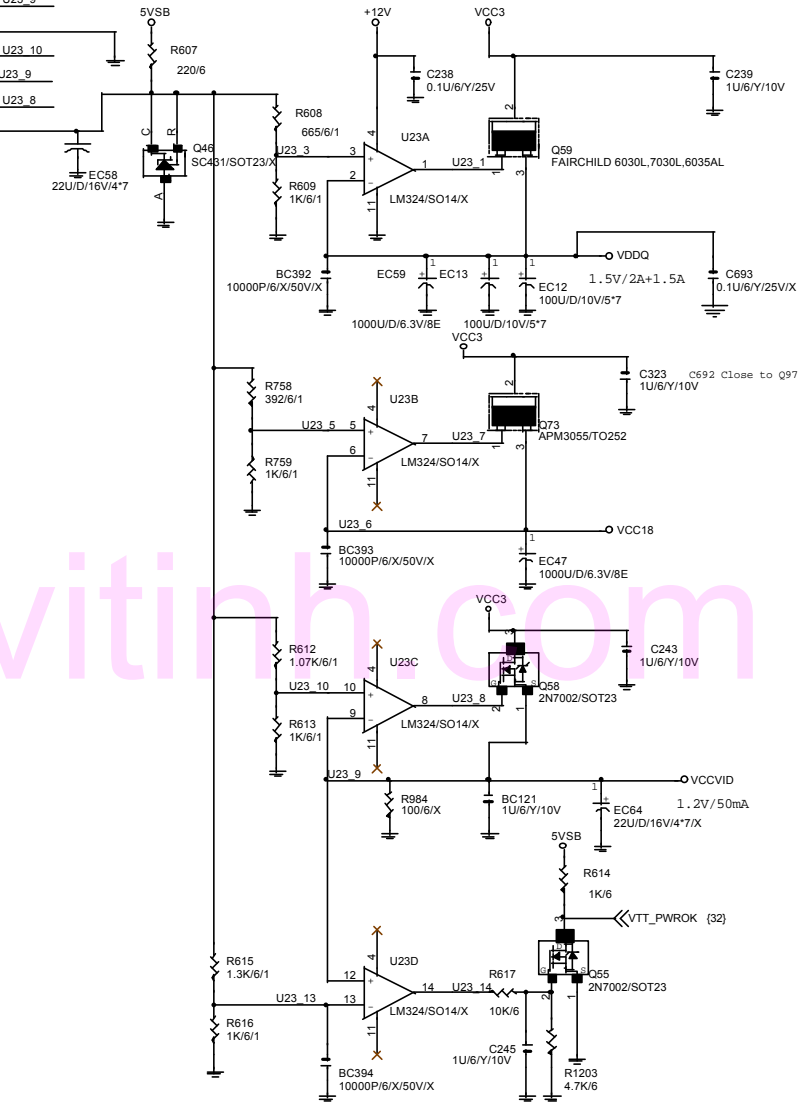
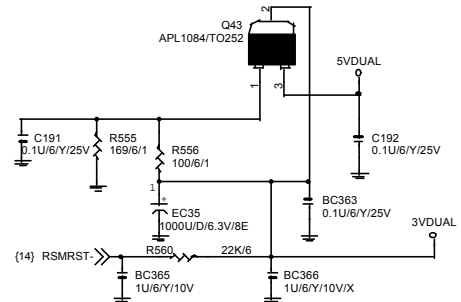
ATX POWER CONNECTOR



COLAYOUT (與U23)



+12V TRACE  
250MIL



SIGABYTE CORP.			
Title			
<b>Misc. PWR &amp; ATX CONN.</b>			
Size	Document Number	Rev	
B	<b>GA-8IR533</b>	<b>1.0</b>	
Date:	Friday, May 17, 2002	Sheet	230 of 33