

GIGABYTE GA-8IR2003 Schematics

Revision 2.0

SHEET

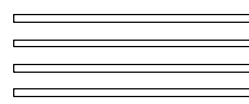
TITLE

01	COVER SHEET
02	BOM & PCB MODIFY HISTORY
03	WILLIAMATE_478A
04	WILLIAMATE_478B
05	WILLIAMATE_478C
06	MCH-BROOKDALE-E_A
07	MCH-BROOKDALE-E_B
08	MCH-BROOKDALE-E_C
09	MD0~63
10	DDR1~2
11	DDR-TERM
12	AGP
13	ICH4_1
14	ICH4_2
15	FWH (SINGLE BIOS)
16	ICS950223 CLOCK GEN
17	PCI1_2
18	PCI3_4
19	PCI5
20	ITE LPC I/O
21	IDE
22	KB_PS2

SHEET

TITLE

23	COM_LPT_FDD
24	F-USB1 & F-USB2
25	FPANEL
26	CODEC
27	AUDIO_GAMEPORT
28	AUDIO_SPDIF
29	DDR POWER
30	POWER1
31	POWER2
32	LAN RTL8100B & B-USB CONNECTOR
33	GPIO LIST
34	PCI ROUNT LIST
35	
36	
37	
38	
PCB	十美,育富,群祥,智恩 4v藍C

	
GIGABYTE	
Title COVER SHEET	
Size Custom	Document Number GA-8IR2003
Date: Monday, February 10, 2003	Rev 2.0
Sheet 1 of 34	

Model Name: 8IR2003

Version: 2.0

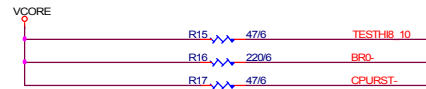
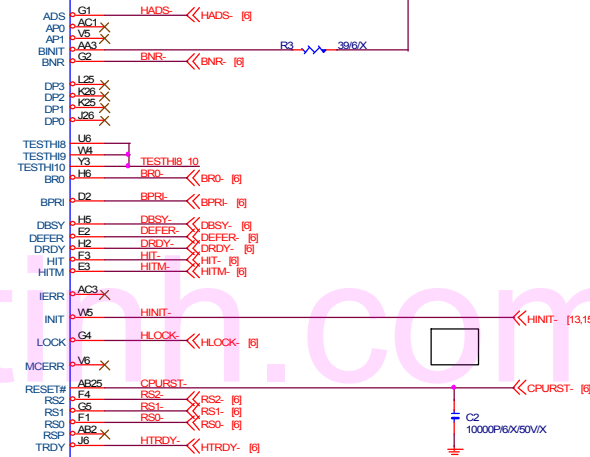
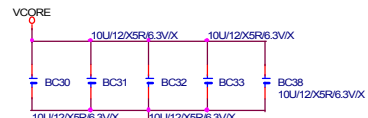
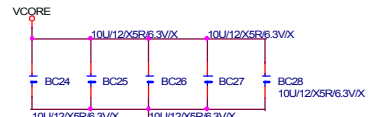
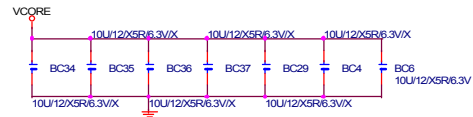
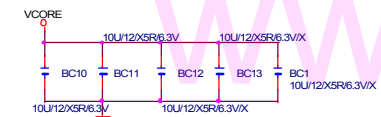
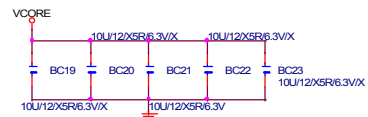
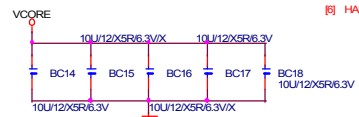
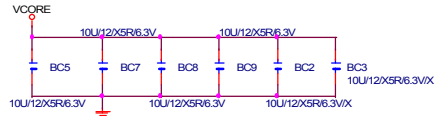
BOM 修改

History 版本	修改項目內容	修改原因
0.1A-0322	9M8IE-00-01A --> 9M8IR-00-01	參考右邊修改內容
1.0A-0422	9M8IR-00-01 --> 9M8IR-00-10A	1. 統一電解電容 2. INTEL FRONT PANEL&6 CHANNEL
1.0B-0506	9M8IR-00-10A --> 9M8IR-00-10B	1. ADD CBC1,CB39 0.1U/6 FOR EMI
1.0B-0506	9M8IR-00-10B --> 9M8IR533-00-10B	
1.0C-0520	9M8IR533-00-10B --> 9M8IR533-00-10C	1.M_GTLREF R65 150 --> 165
1.0D-0523	9M8IR533-00-10C --> 9M8IR533-00-10D	1. PCB 8IR --> 8IR533 2. DRIVER IUCD REV2.01 --> REV2.0
1.0E-0701	9M8IR533-00-10D --> 9M8IR533-00-10E	1.FOR SYSTEM SHOWDOWN ISSUE R1601 200K --> 240K
1.0F-0709	9M8IR533-00-10E --> 9M8IR533-00-10F	1.ADD PCB REV1.01.
10F-0828	9M8IR533-00-10F --> 9M8IR533-00-10F	1. ADD MOSFET 15N03
10G-0913	9M8IR533-00-10F --> 9M8IR533-00-10G	1. FOR C-STEPIING CPU HANG 2.PWM HIGT SIDE MOSFET R1597,R1606 2.2 --> 4.7ohm
5MK-10G-0923	5MK8IR533-00-10G --> 3M8IR533-00-10G+4M8IR533-00-10G	
10H-1017	9M8IR533-00-10G --> 9M8IR533-00-10H	1. 南橋加替料 U61 : ICH2X SL5PN/CO (10HBL-032801-A0)
9MK-10H-1119	9M8IR533-00-10H --> 9MK8IR533-00-10H	1. 9MK =3MK + 4MK +5MK
10I-1129	9M8IR533-00-10H --> 9M8IR533-00-10I	1. REMOVE PWM MOSFET FDB7030 & FDB306 2. REMOVE 1N5817 DII
10N-1122	9M8IR533-00-10H --> 9M8IR533-00-10N	1. PCB REV1.1 --> REV1.11 2. C881 0.1U/6/Y25V --> 1U/8/Y/25V 3. ADD C920=1U/8/Y/25V , Q67=PMBZ5237B R1620=10/6 4. REMOVE D60,D61= 1N5817
10N-1122	9M8IR533-00-10N --> 9M8IR533-00-10N	1. DVT --> MP
10N-ECN--1129	9M8IR533-00-10N --> 9M8IR533-00-10N	1. ADD C900 1U/6
9MK-10N-1129	9M8IR533-00-10N --> 9MK8IR533-00-10N	1. 9MK =3MK + 4MK +5MK
9MK-100-1204	9MK8IR533-00-10N --> 9MK8IR533-00-100	1. ADD AC97 ALC650 REV.F
100-1204	9M8IR533-00-10N --> 9M8IR533-00-100	1. ADD AC97 ALC650 REV.F

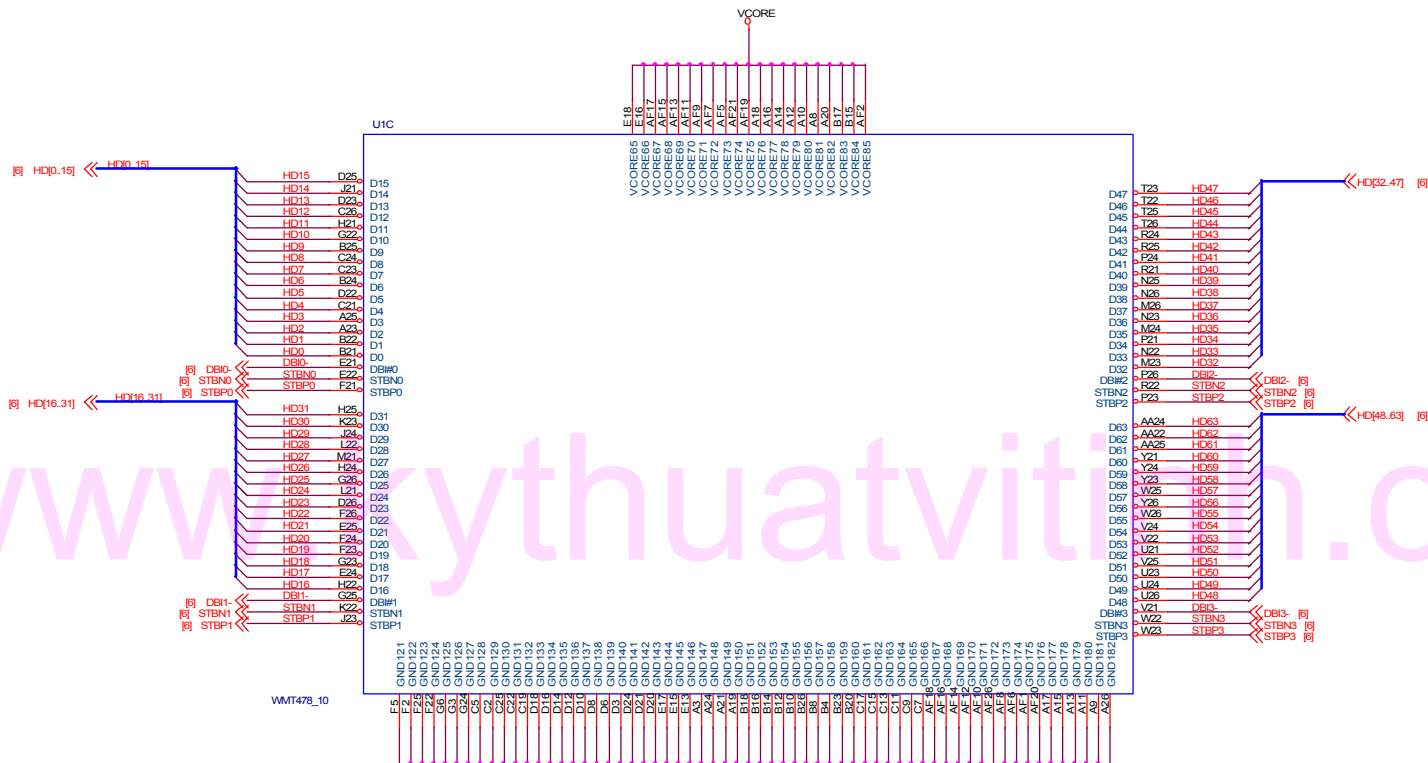
PCB version 變更(線路及Layout

Change) History PCB 版本	修改項目內容	修改原因
0.1	8IE REV0.1 --> 8IR REV0.1	
1.0	8IR REV0.1 --> 8IR REV1.0	INTEL FRONT PANEL & 6 CHANNEL ALC650
1.0	8IR REV0.1 --> 8IR533 REV1.0	變更 文字面 : 1.8IR -> 8IR533 2. P4TitanDDR --> P4Titan533
1.01	8IR REV1.0 --> 8IR533 REV1.01	1.Modify CPU RM Drill.
1.02	8IR533 REV1.01 --> 8IR533 REV1.02	1.D61 1N5817 正端接 C900 1U/6 2. ADD PMBZ5237B CIRCUIT FOR PWM PIN12 BOOTB
2.0	8IE533 REV2.0 --> 8IR533 REV2.0	1.ICH4 --> ICH2 2. ADD ALC650/651 CO-LAYOUT 3. ADD CLR_PWD 4.REMOVE OVER AGP,DDR,VCORE VOLTAGE
2.0	8IR533 REV2.0 --> 8IR2003 REV2.0	1. N/B HEATSINK DRILL 2. RESET CIRCUIT MODIFY 3. KF1 轉90度,遠離板邊 4. AC97 VCC3 ADD VCC3 CEC3=100U , VDDQ VCC3 ADD EC2=1000U 5. TEXT MODIFY 8IR2003 , P4 TITAN
BOM		
20A-1204	9M8IE533-00-20B --> 9M8IR533-00-20A	DVT
20A-0115	9M8IR533-00-20A --> 9M8IR2003-00-20A	1. ADD CEC3=100U , EC2,EC14=1000U 2. ADD EMI CC4,CC5,CC70=180P/6 3. SPDIF_IO BLACK --> RED 4. R65 150 --> 165/6/1 5. R1612 4.7 --> 22/6 , ADD R1613=1K/6 , R1721=8.2K/6
20B-0122	9M8IR2003-00-20A --> 9M8IR2003-00-20B	1. ADD CC41,CC42=22P , CR16=1M , CX1=24.576MHz 3.REMOVE CR58,CR62=0ohm , R214=33

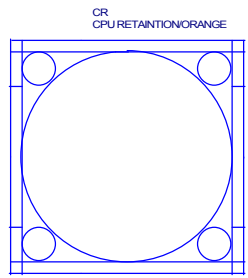
GIGABYTE



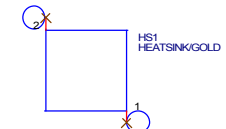
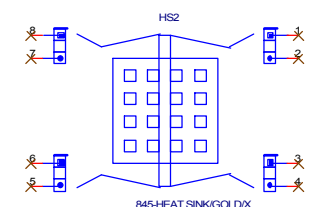
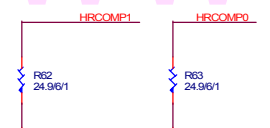
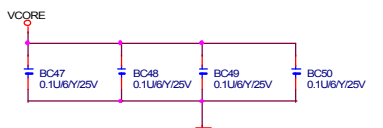
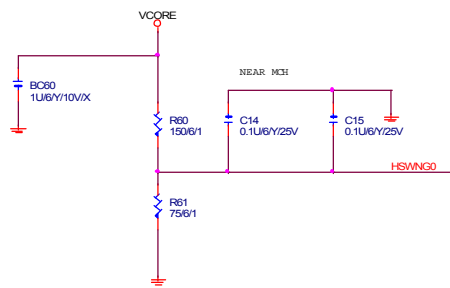
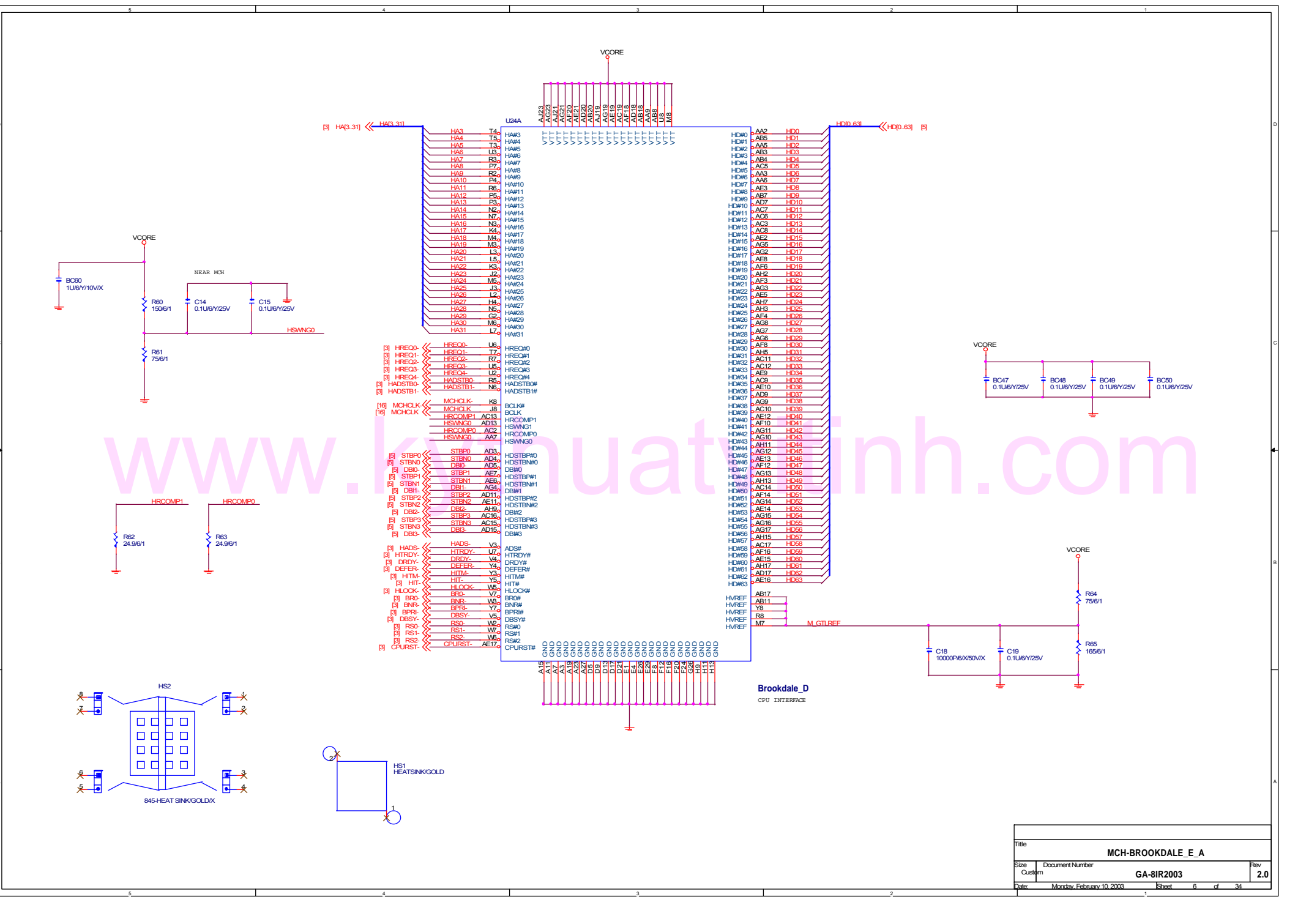
Title			WILLIAMATE 478A	
Size	Document Number			Rev
Custom	GA-8IR2003		2.0	
Date:	Monday, February 10, 2003	Sheet	3	of 34



www.kythuativiti.com

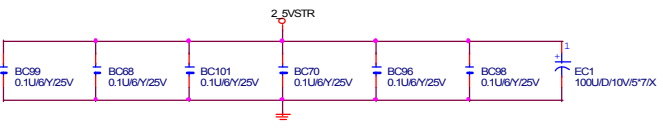
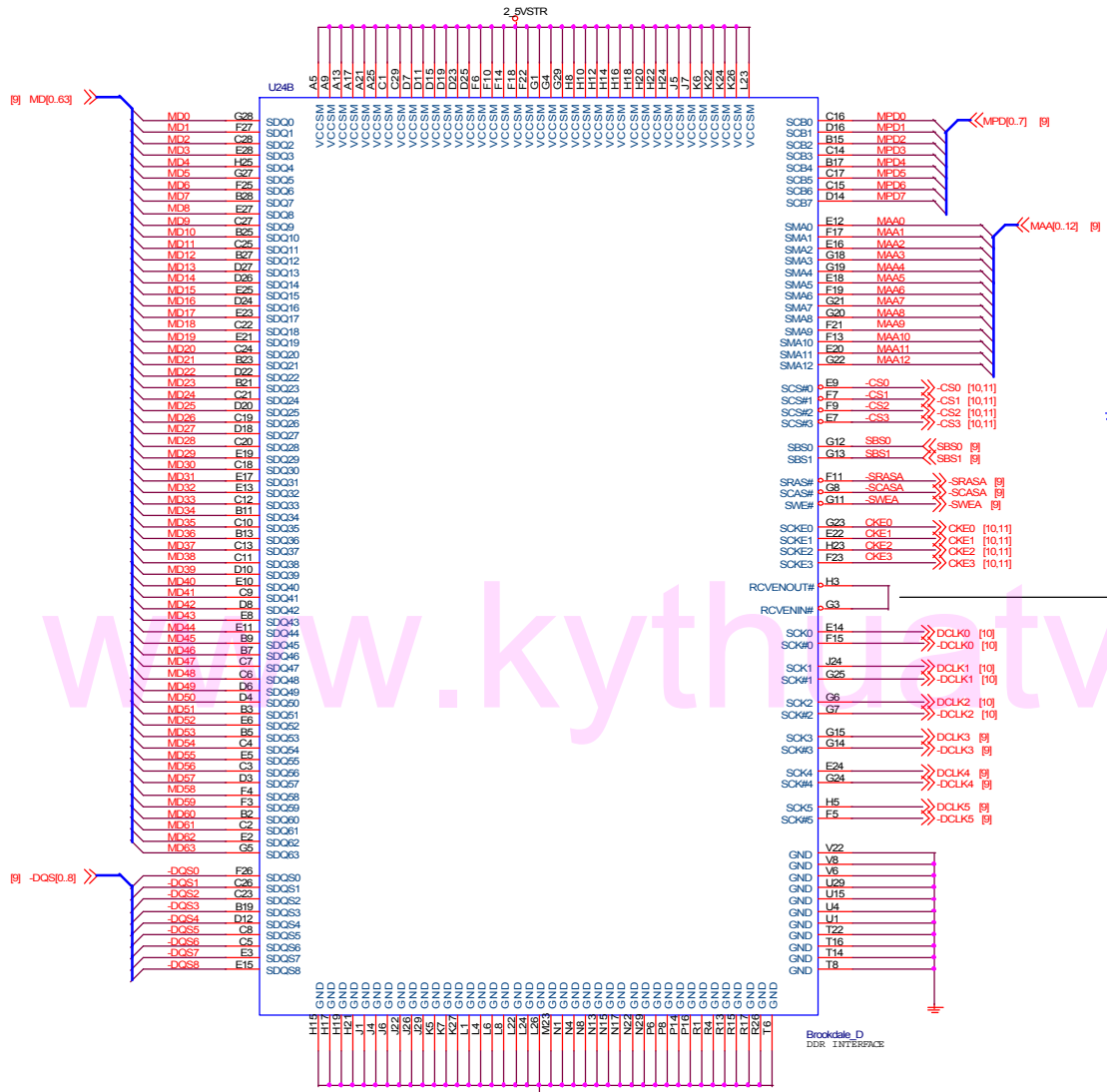


Title			WILLIAMATE 478C	
Size	Document Number	Rev		2.0
Custom	GA-8IR2003			
Date:	Monday, February 10, 2003	Sheet	5	of 34



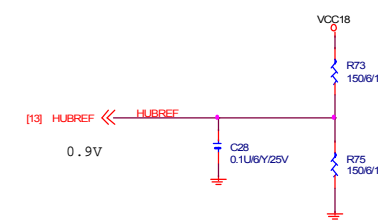
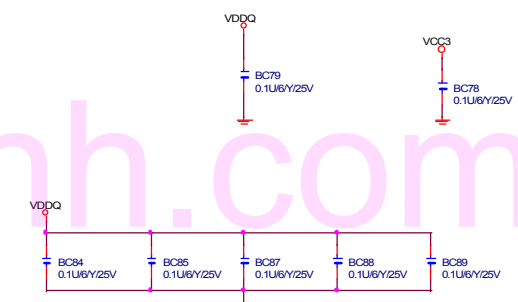
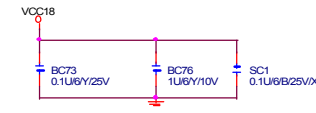
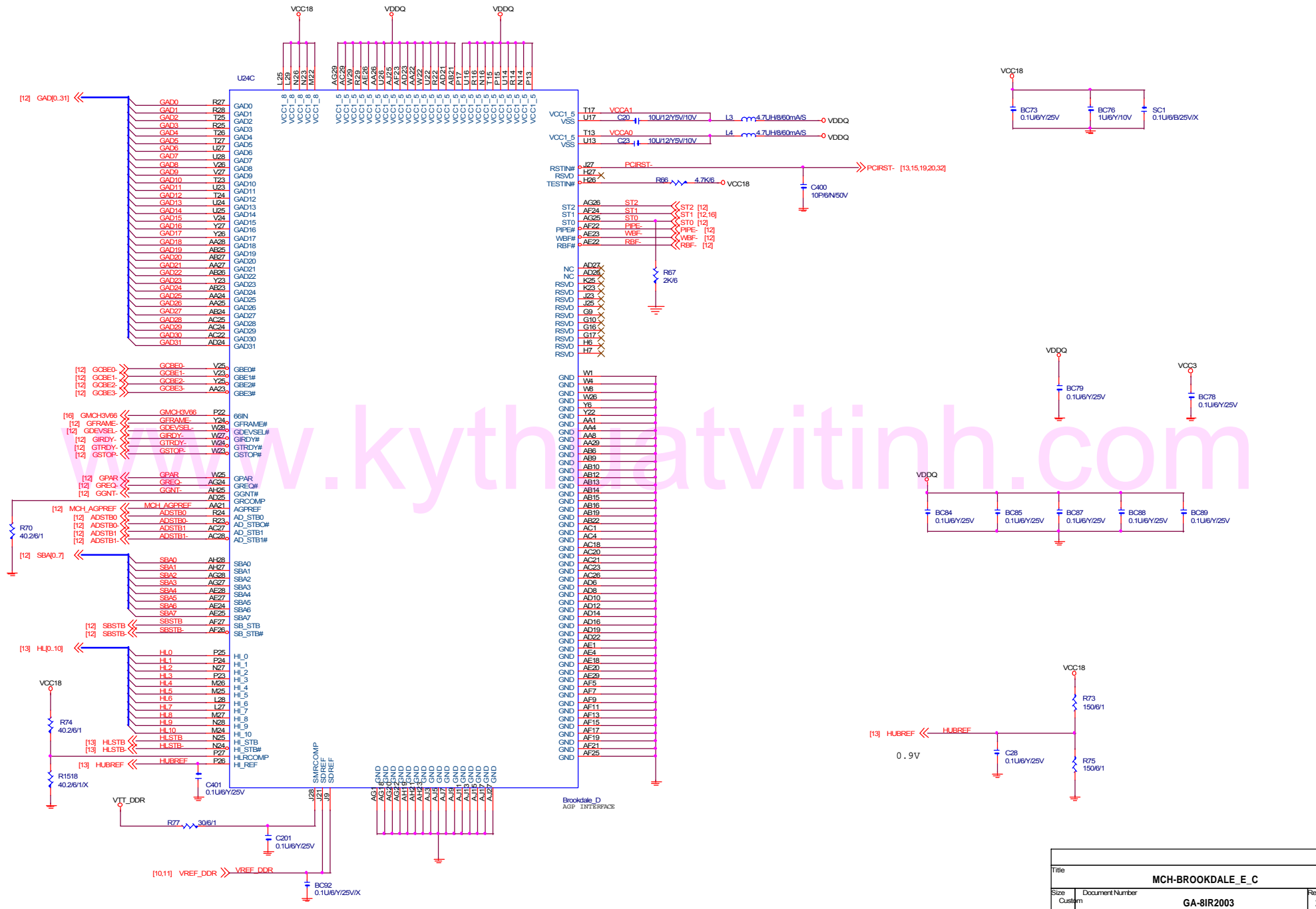
Brookdale_D
CPU INTERFACE

Title			MCH-BROOKDALE_E_A
Size	Document Number	Rev	
Custom	GA-8IR2003	2.0	
Date:	Monday, February 10, 2003	Sheet	6 of 34

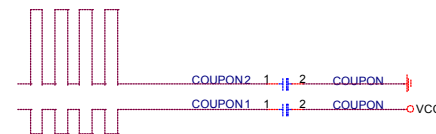
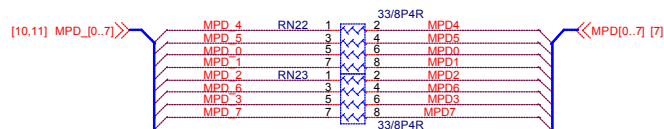
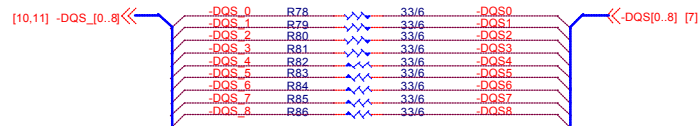
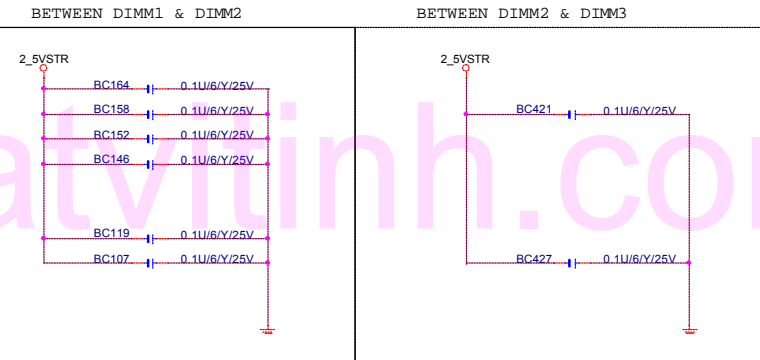
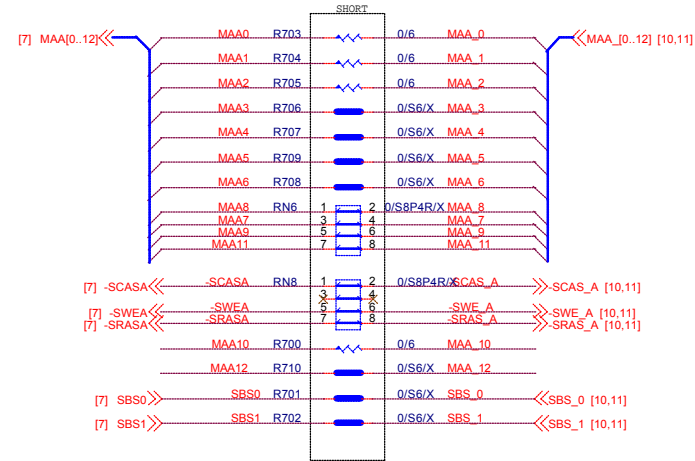
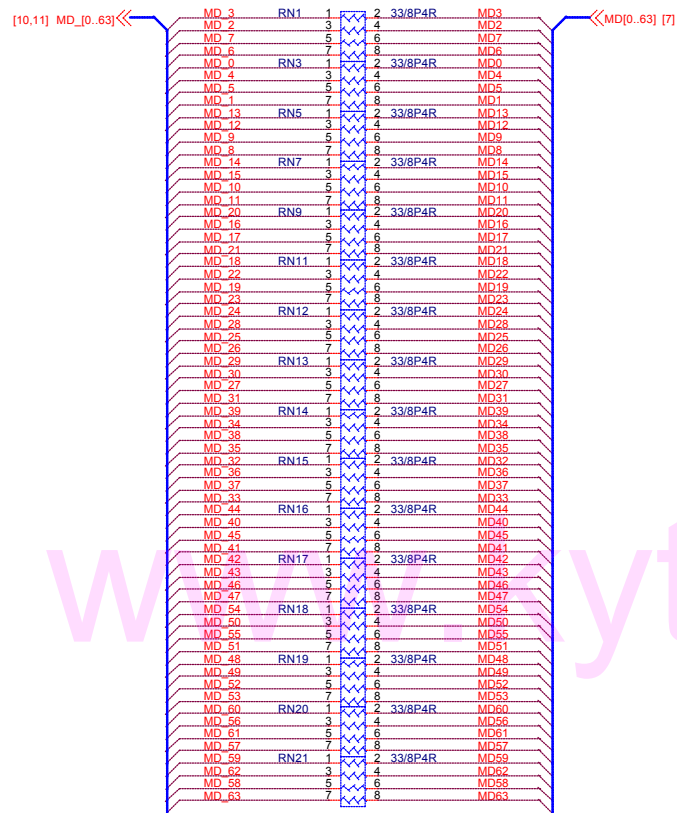


注意:DDR版要在SOLDER SIDE
LAY 1 INCH 長度(5MIL)

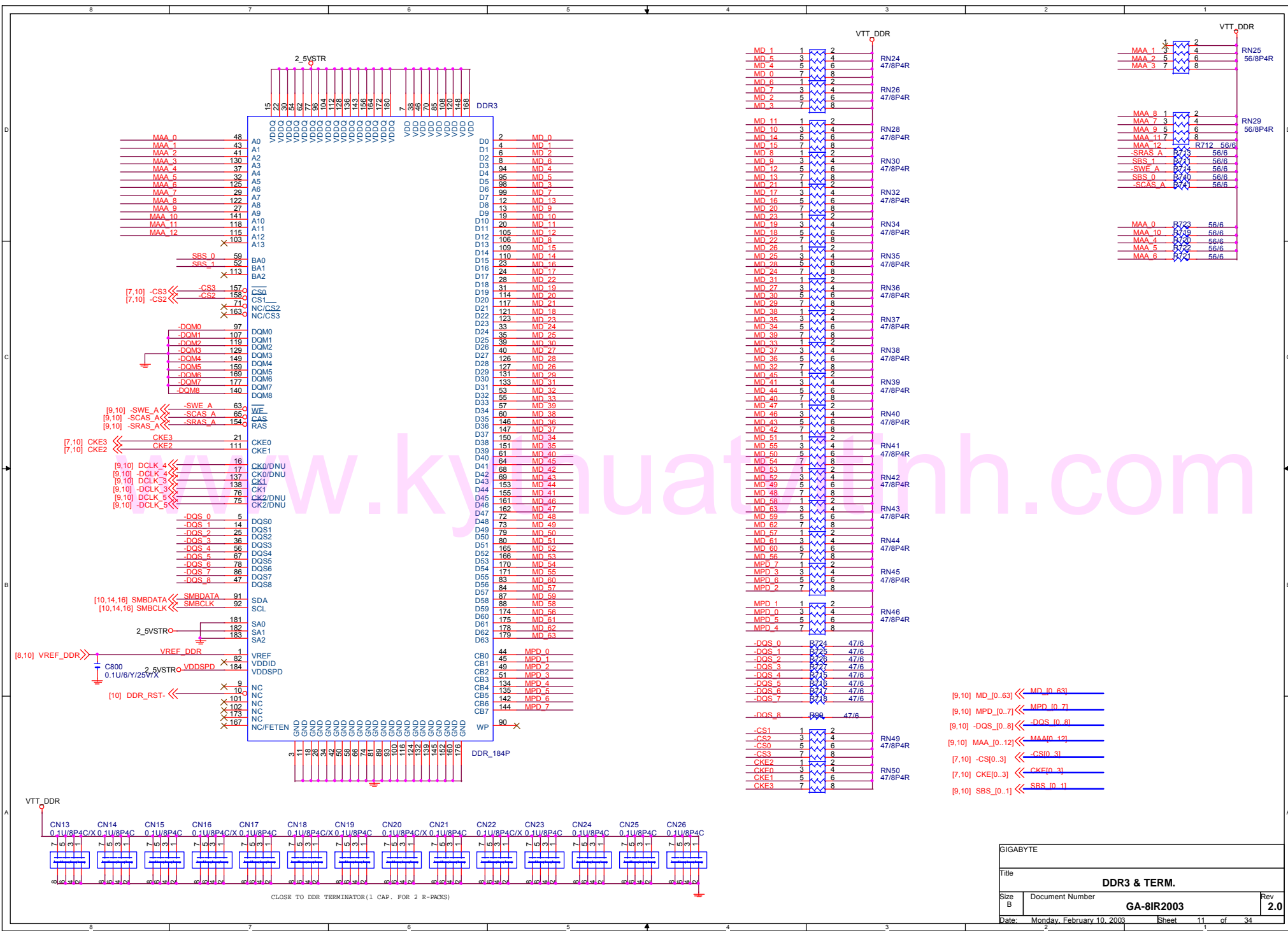
Title			MCH-BROOKDALE_E_B
Size	Document Number	Rev	2.0
Custom	GA-8IR2003		
Date:	Monday, February 10, 2003	Sheet	7 of 34



Title			MCH-BROOKDALE_E_C
Size	Document Number	Rev	
Custom	GA-8IR2003	2.0	
Date:	Monday, February 10, 2003	Sheet	8 of 34

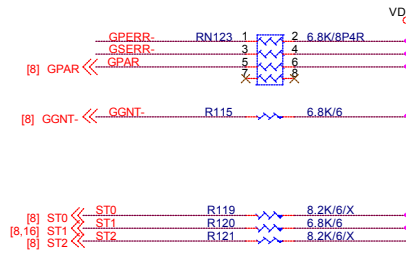
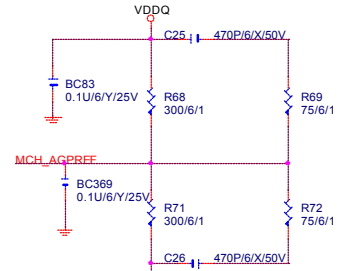
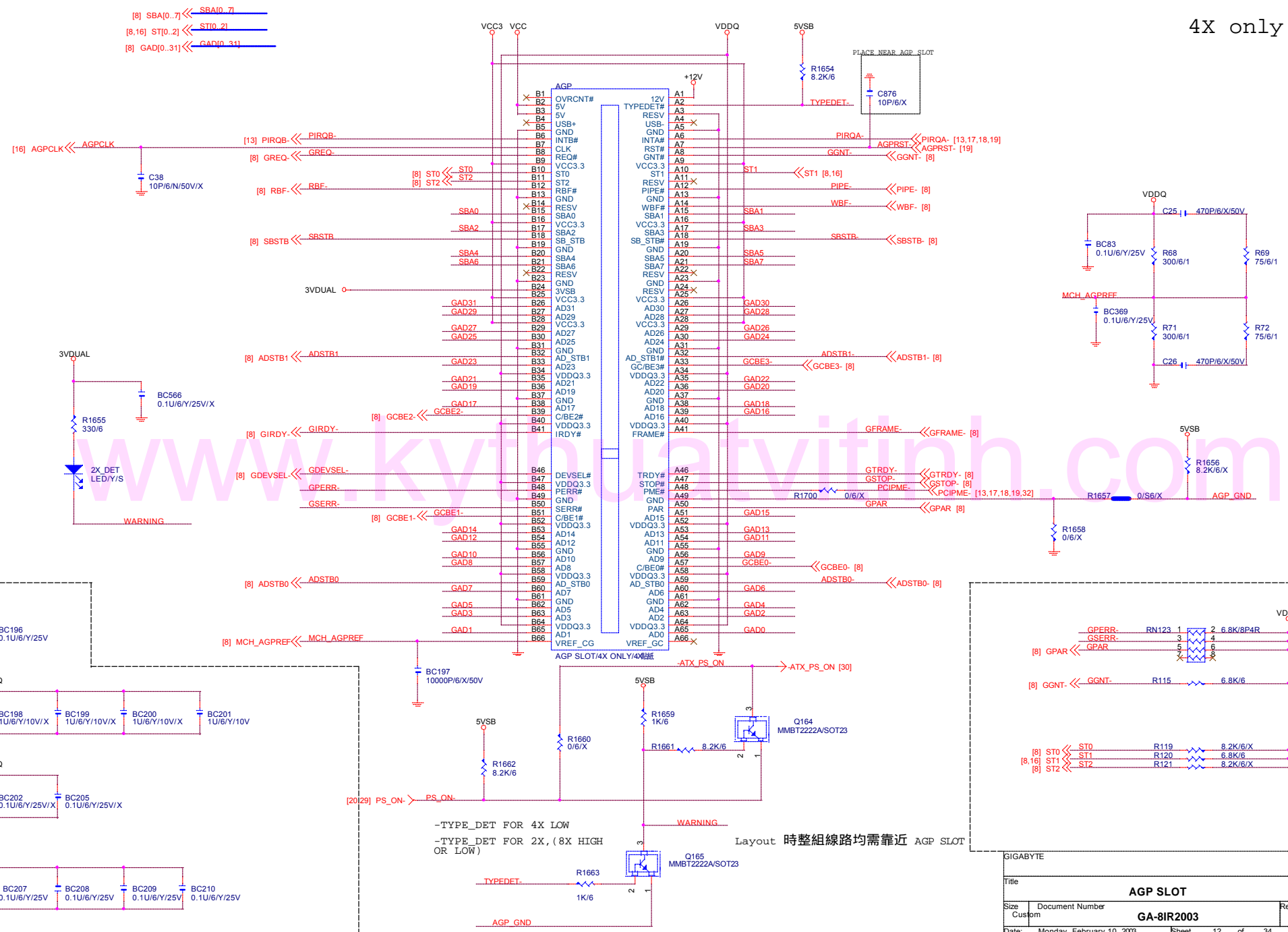


GIGABYTE	
Title	
MD0_63 SERIAL TERM.	
Size B	Document Number
	GA-8IR2003
Date:	Rev
Monday, February 10, 2003	2.0
Sheet 9 of 34	

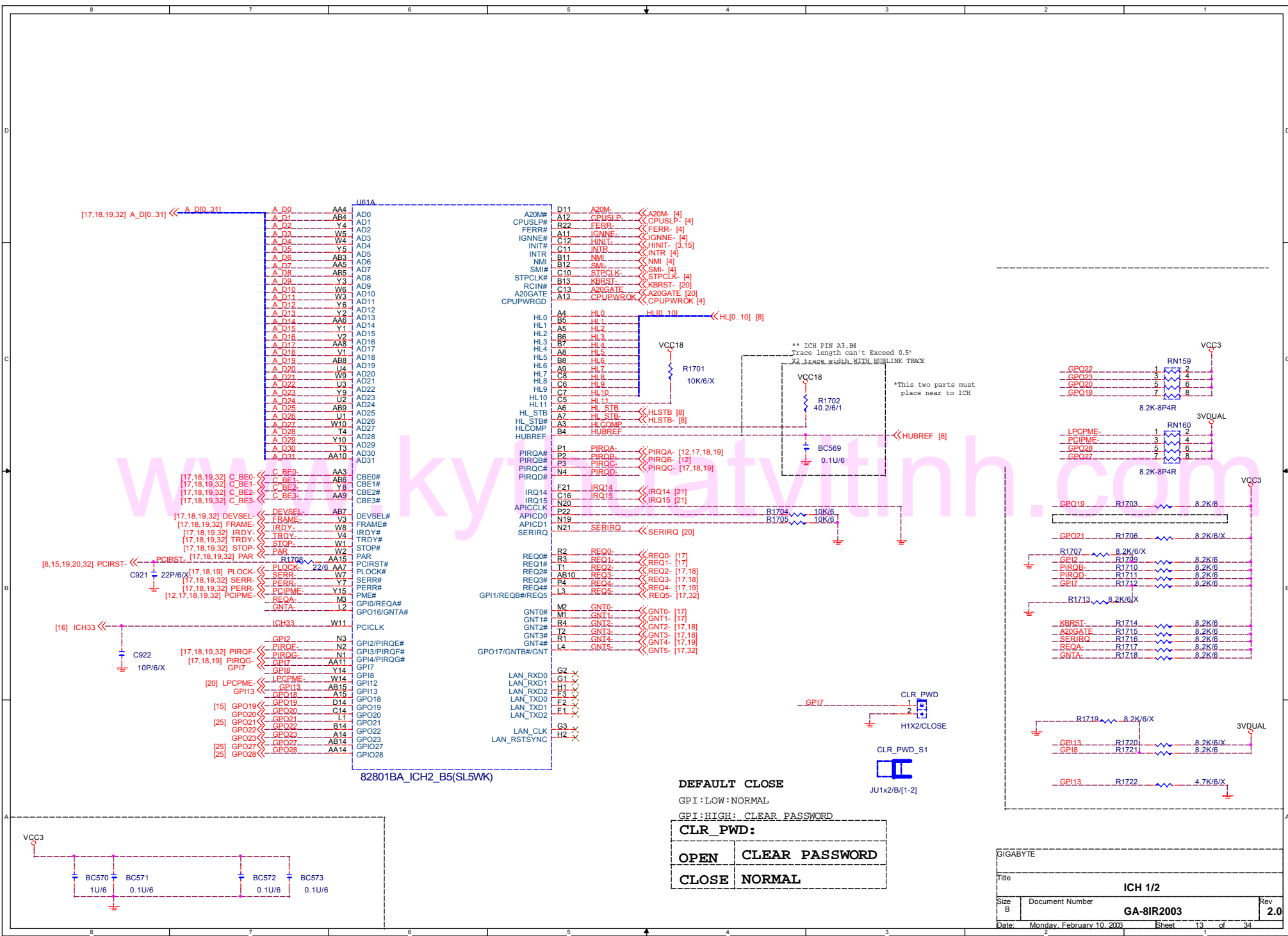


GIGABYTE	
Title	
DDR3 & TERM.	
Size	Document Number
B	GA-8IR2003
Date:	Monday, February 10, 2003
Sheet	11 of 34
Rev	2.0

4X only

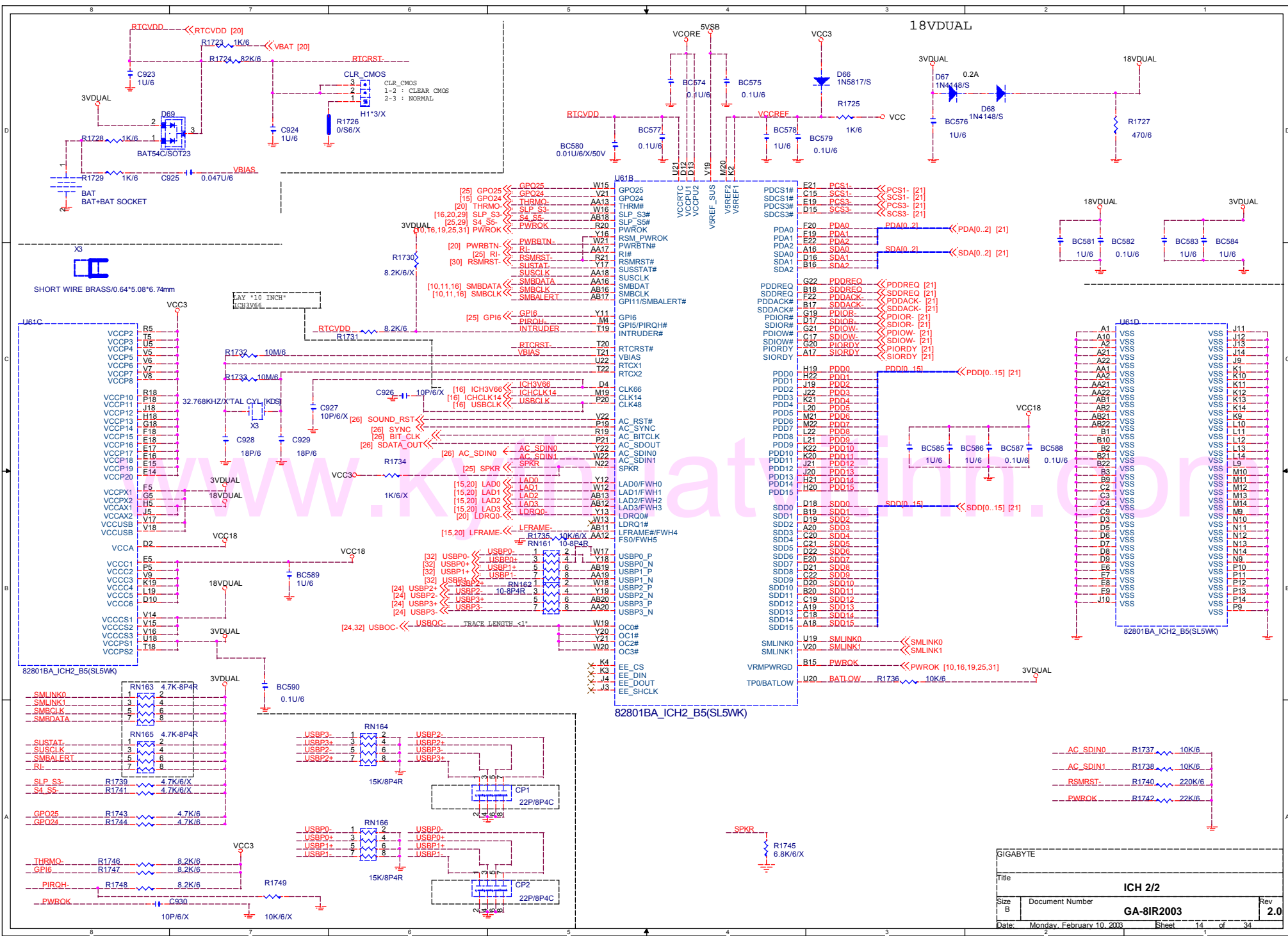


GIGABYTE			
Title			
AGP SLOT			
Size	Document Number	Rev	
Custom	GA-8IR2003	2.0	
Date:	Monday, February 10, 2003	Sheet	12 of 34



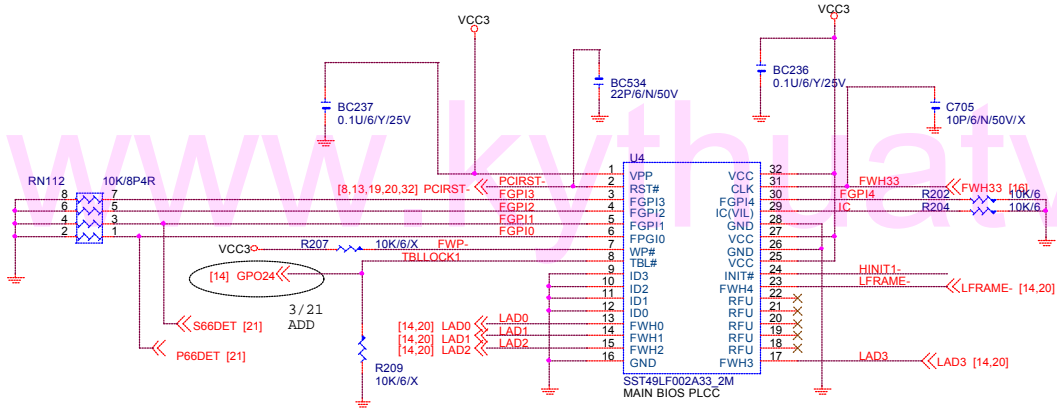
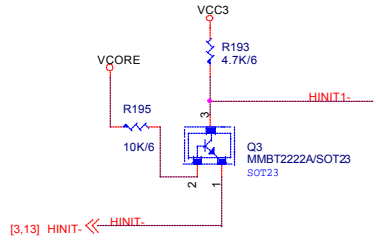
DEFAULT CLOSE
 GPI : LOW : NORMAL
 GPI : HIGH : CLEAR PASSWORD
CLR_PWD:

OPEN	CLEAR PASSWORD
CLOSE	NORMAL

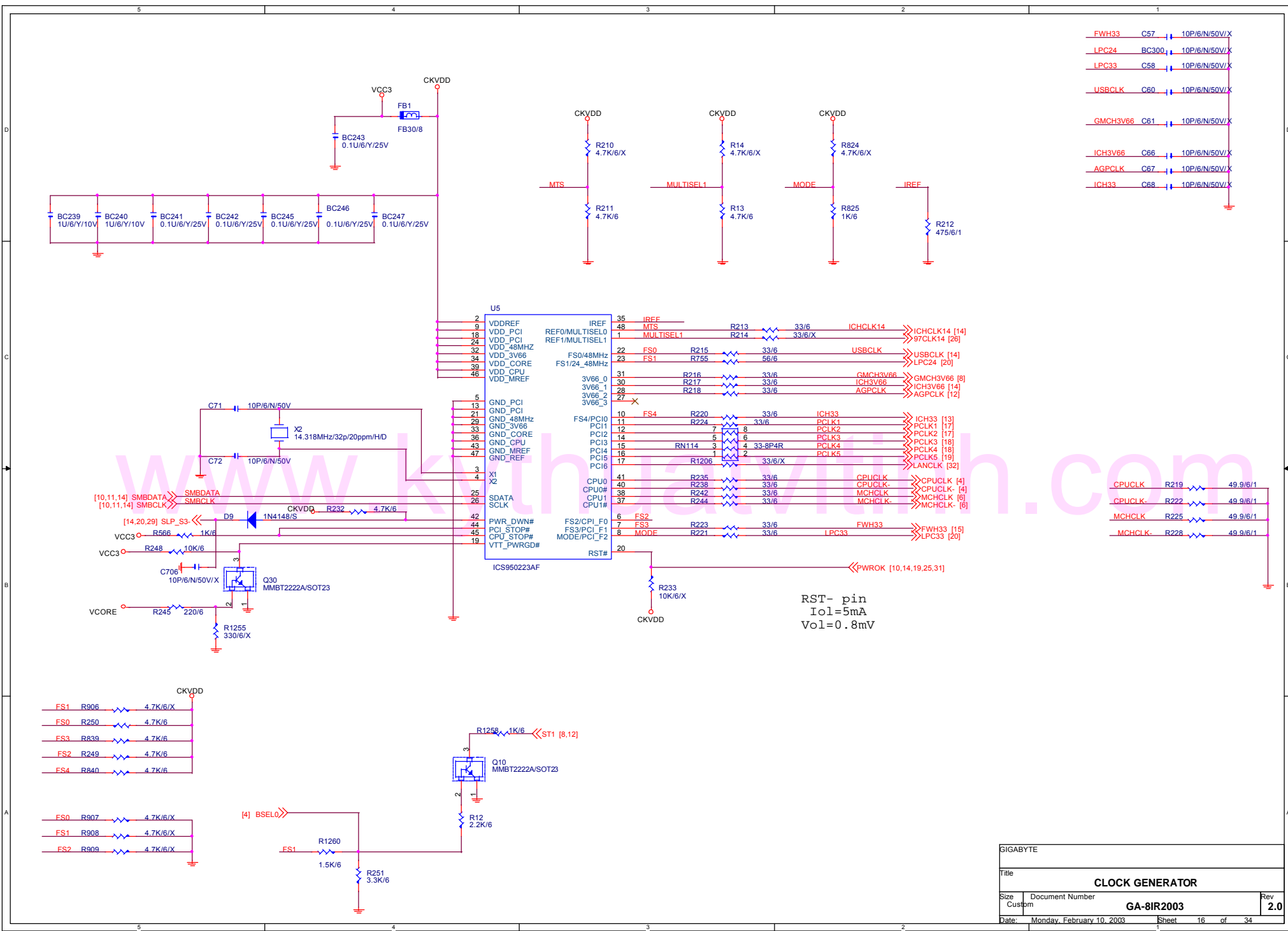


GIGABYTE			
Title ICH 2/2			
Size B	Document Number	GA-8IR2003	Rev 2.0
Date: Monday, February 10, 2003	Sheet 14 of 34		

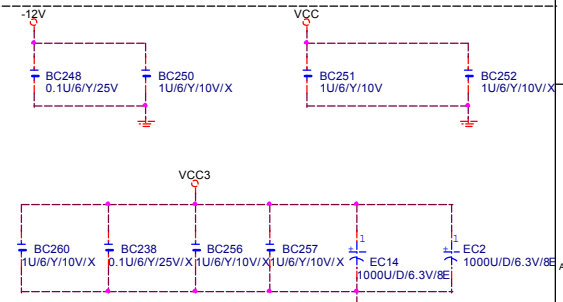
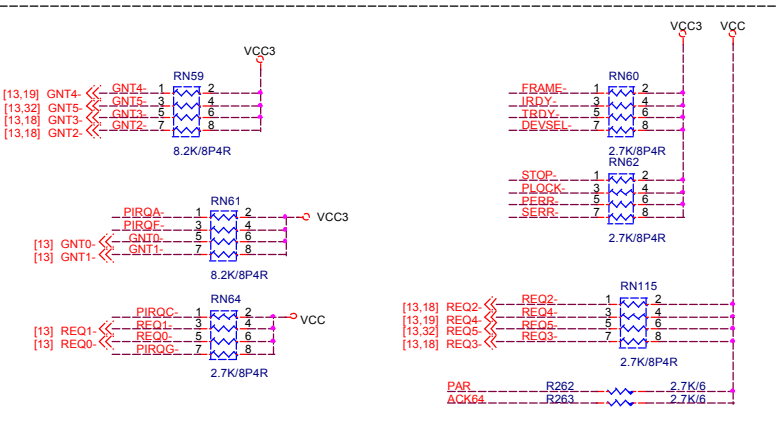
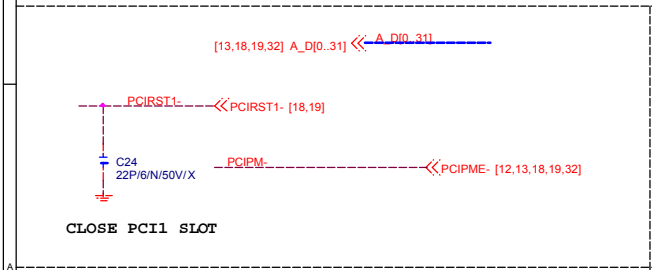
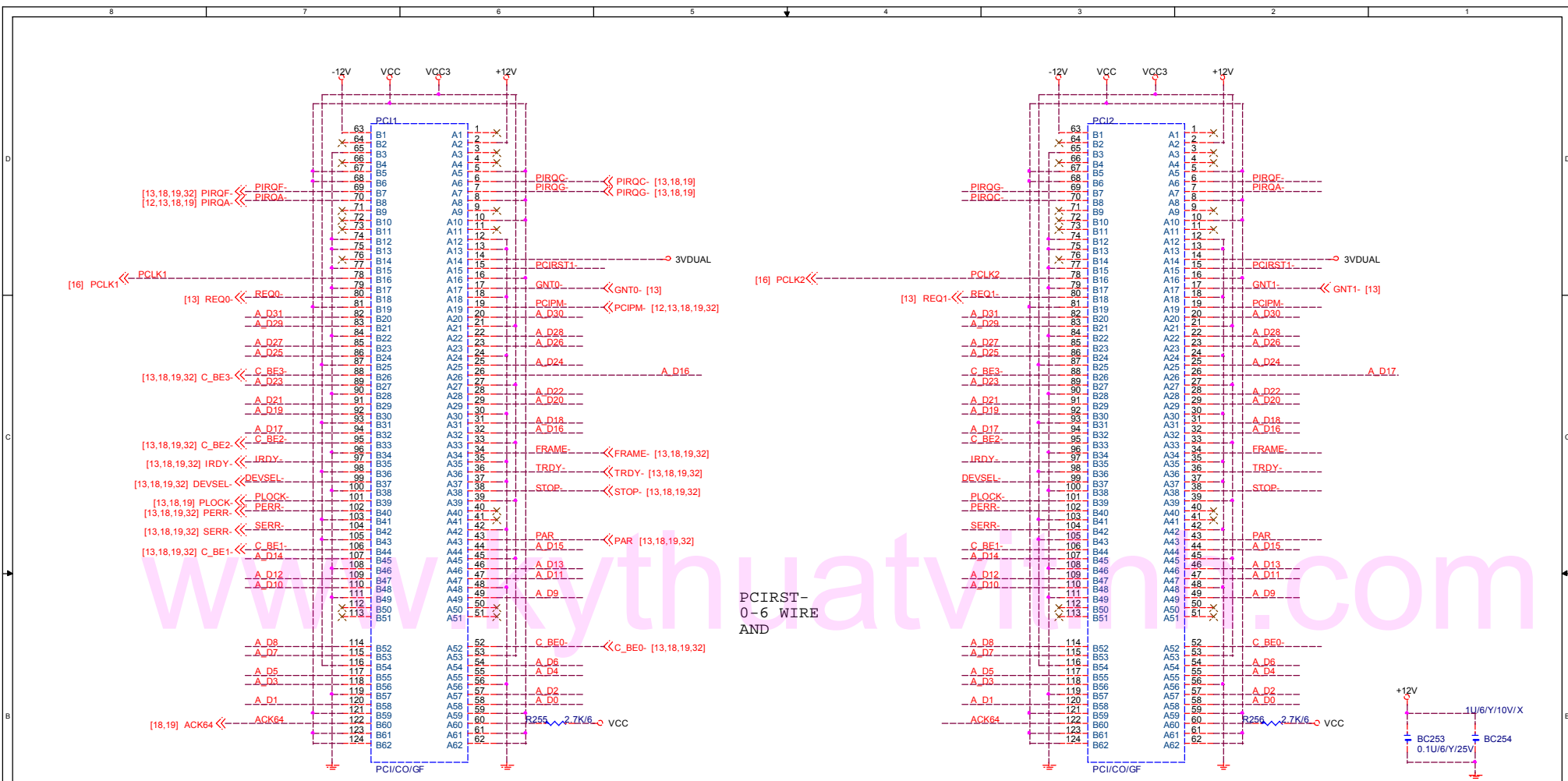
2002/04/15 MODIFY WRITE PROTECT



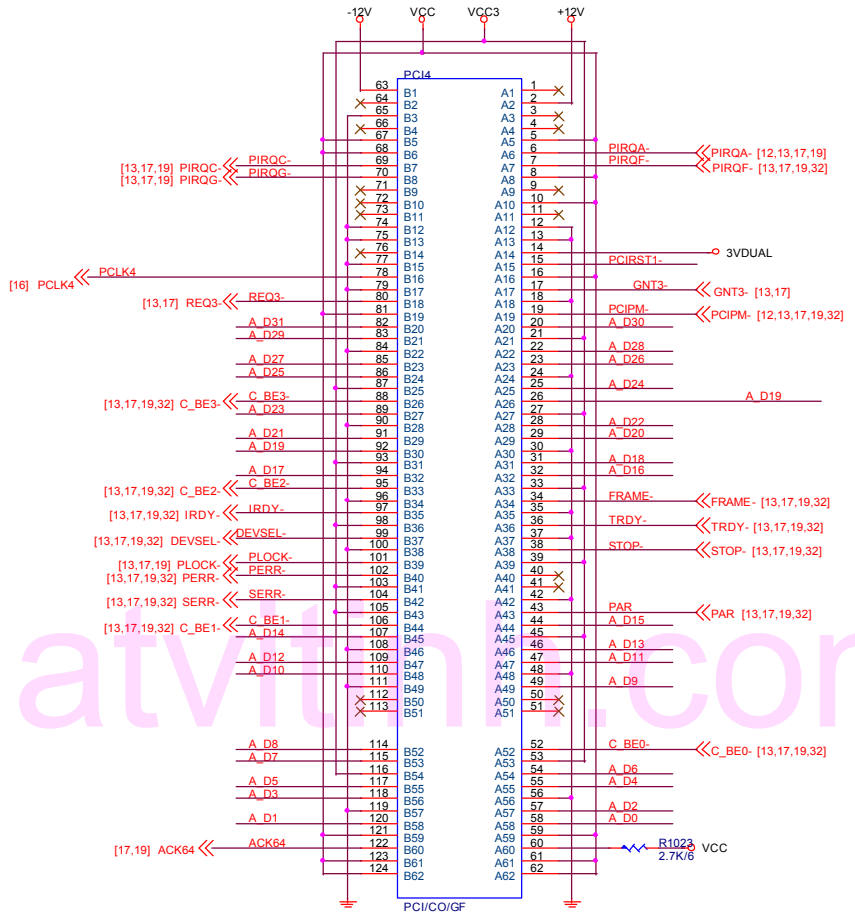
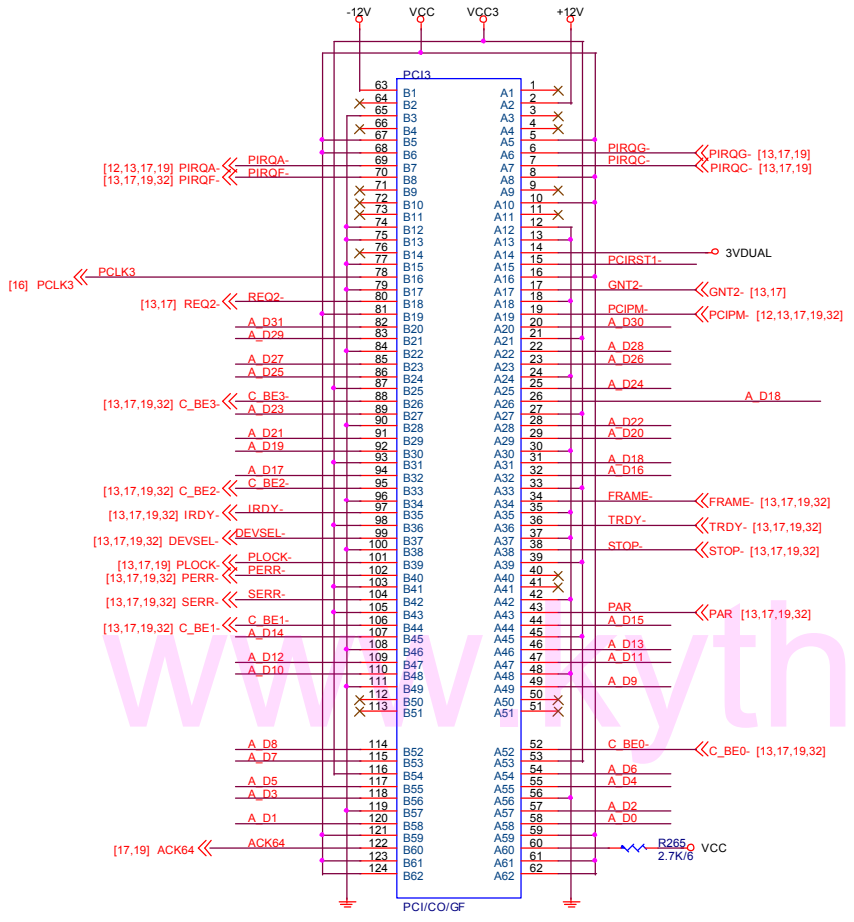
GIGABYTE			
Title			
FHW			
Size B	Document Number	GA-8IR2003	Rev 2.0
Date:	Monday, February 10, 2003	Sheet 15	of 34



GIGABYTE	
Title CLOCK GENERATOR	
Size Custom	Document Number GA-8IR2003
Date: Monday, February 10, 2003	Rev 2.0
Sheet 16	of 34



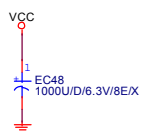
GIGABYTE		
Title		
PCI SLOT 1/2		
Size	Document Number	Rev
B	GA-8IR2003	2.0
Date:	Monday, February 10, 2003	Sheet 17 of 34



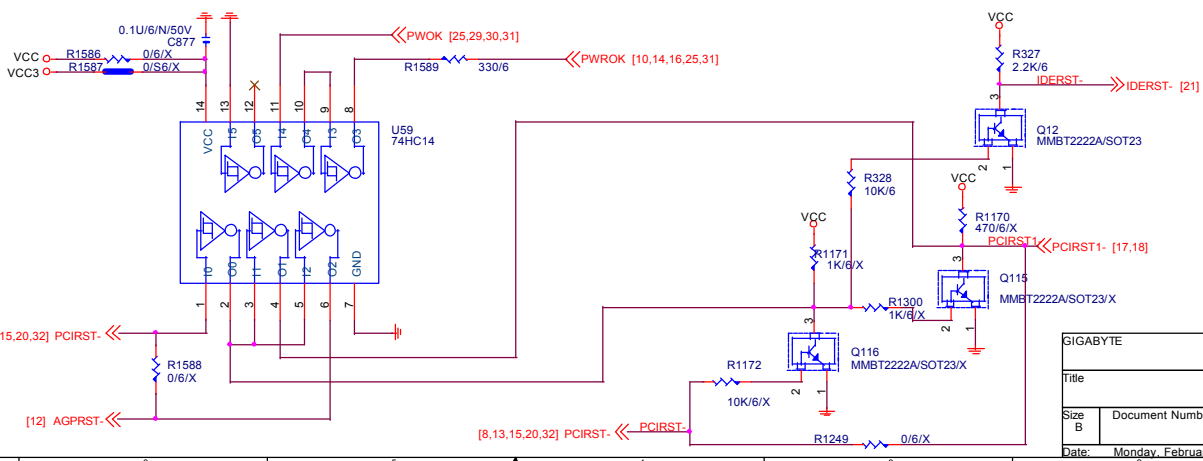
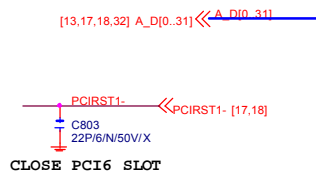
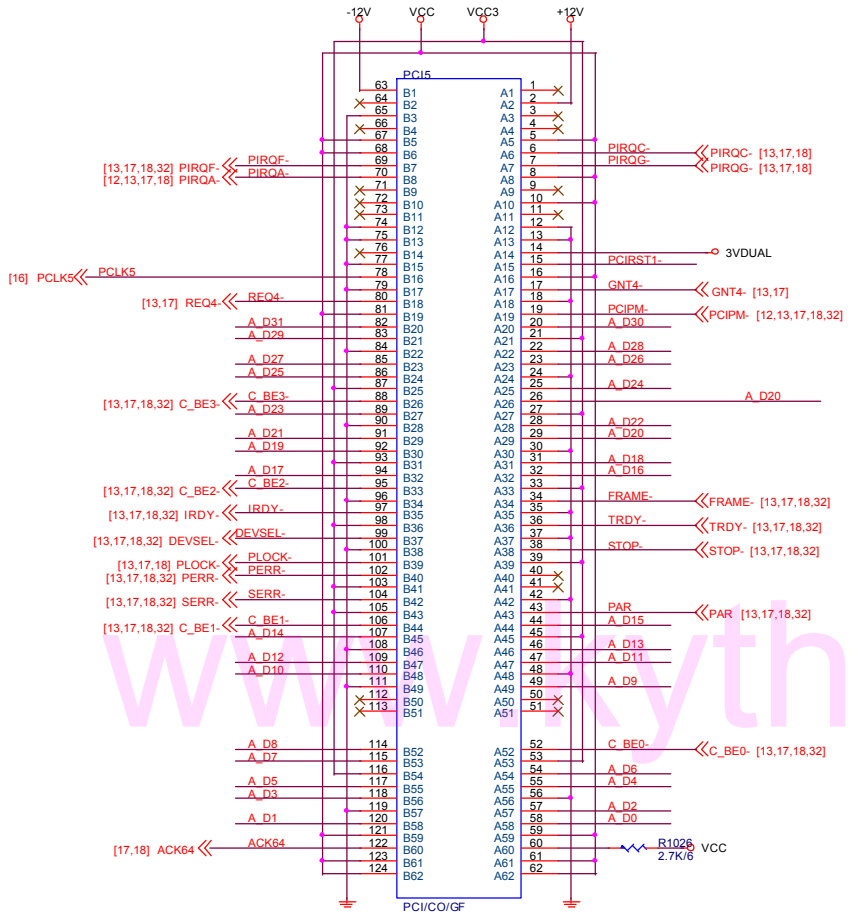
www.lythuatv.com

[13,17,19,32] A_D0..31 << A_D0..31

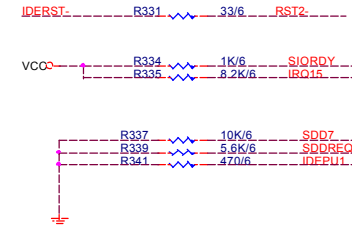
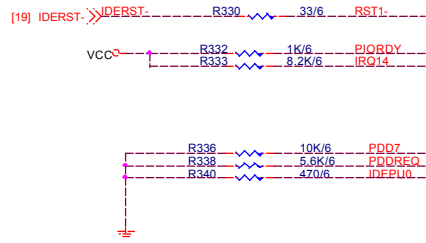
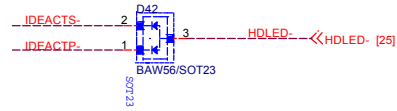
PCIRST1- << PCIRST1- [17,19]



GIGABYTE	
Title	
PCI SLOT 3_4	
Size	Document Number
B	GA-8IR2003
Date:	Rev
Monday, February 10, 2003	2.0
Sheet	of
18	34



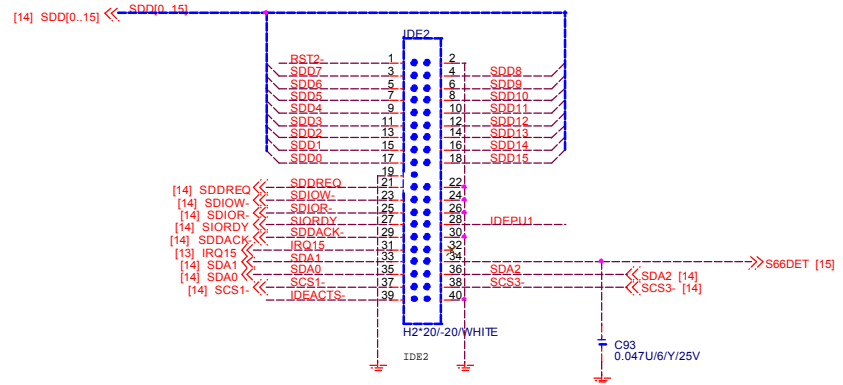
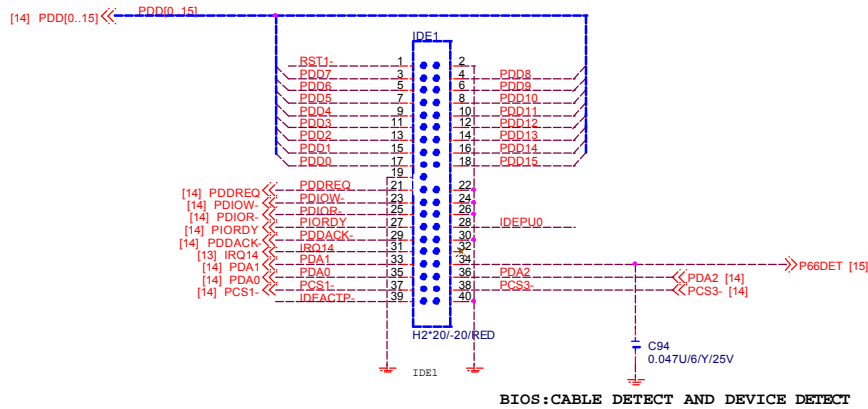
GIGABYTE		
Title		
PCI SLOT 5		
Size B	Document Number	Rev
	GA-8IR2003	2.0
Date:	Monday, February 10, 2003	Sheet 19 of 34



www.kythuatchinh.com

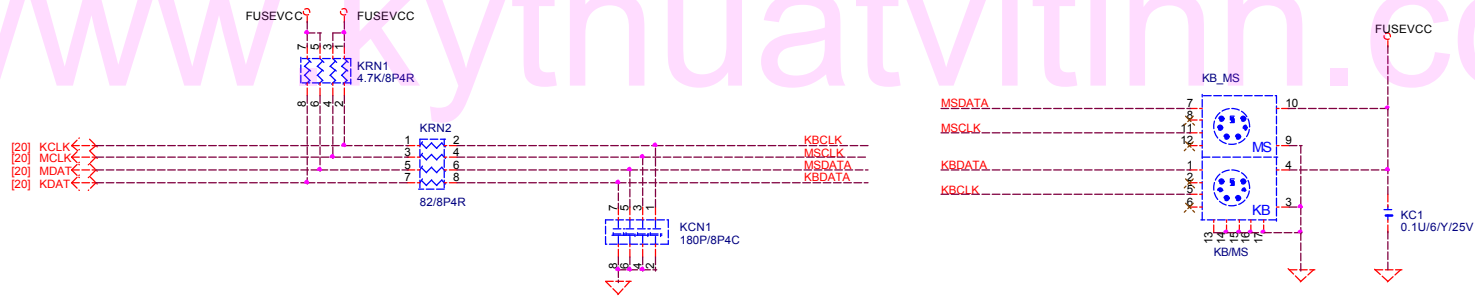
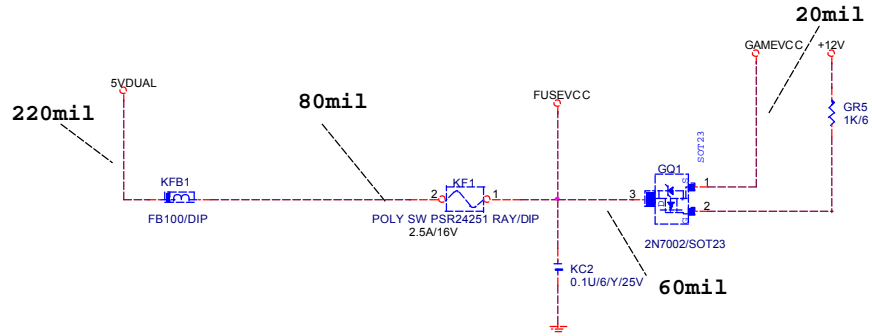
PRIMARY IDE CONNECTOR

SECONDARY IDE CONNECTOR



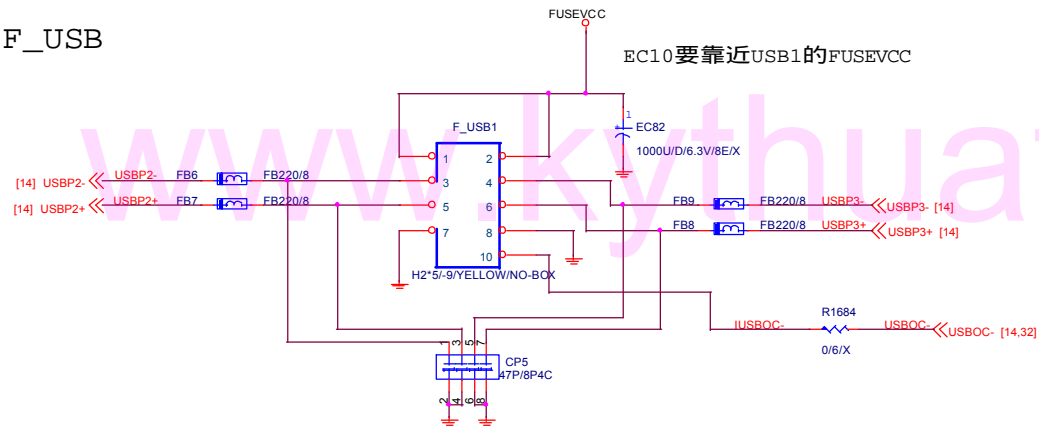
GIGABYTE			
Title IDE CONNECTOR			
Size B	Document Number	GA-8IR2003	Rev 2.0
Date: Monday, February 10, 2003	Sheet	21	of 34

模組化線路



GIGABYTE	
Title	
KB & PS2 MOUSE & IR	
Size	Document Number
B	GA-8IR2003
Date:	Monday, February 10, 2003
Sheet	22 of 34
Rev	2.0

F_USB



GIGABYTE			
Title			
ICH USB+LAN PORT			
Size B	Document Number	GA-8IR2003	Rev 2.0
Date:	Monday, February 10, 2003	Sheet 24	of 34

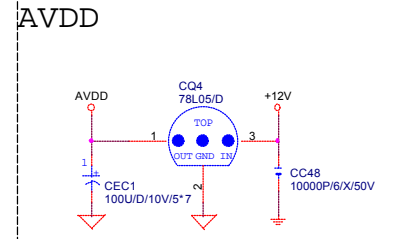
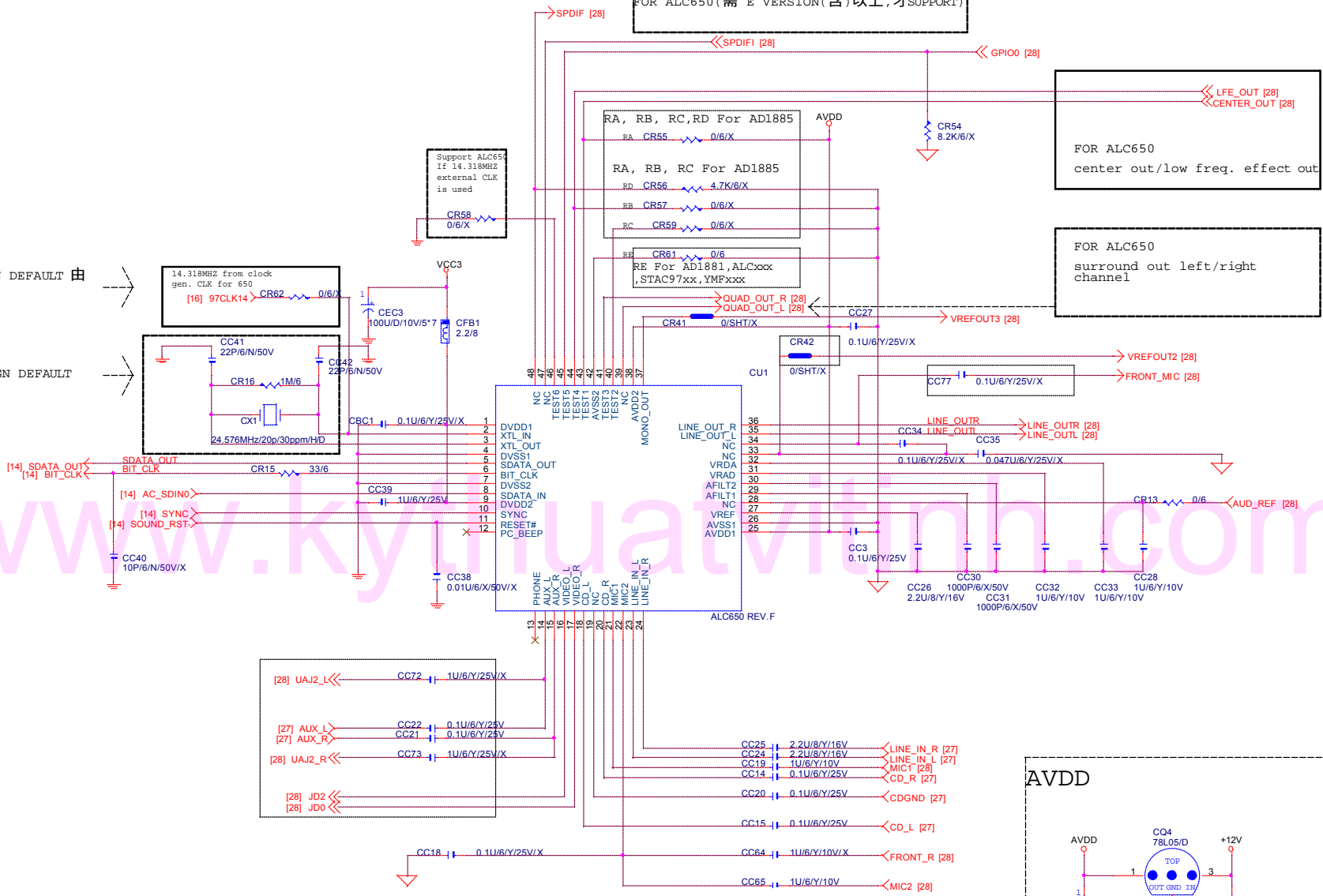
模組化線路

FOR ALC650 (需 E VERSION (含) 以上, 才 SUPPORT)

Support ALC650
If 14.318MHz
external CLK
is used

FOR 650 DESIGN DEFAULT 由
CLOCK GEN 來

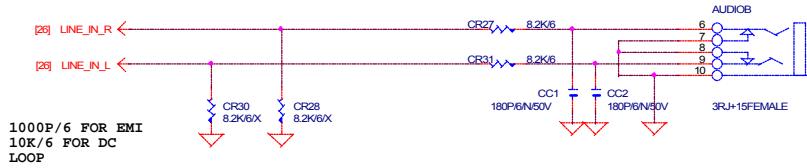
FOR 650 DESIGN DEFAULT
不上 CRYSTAL



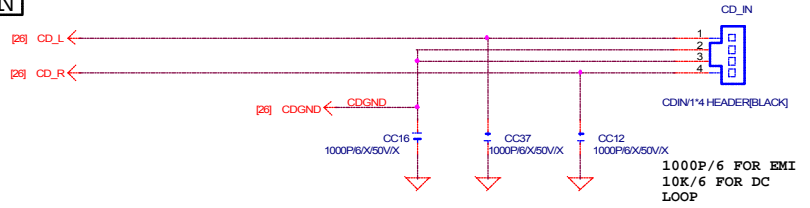
GIGABYTE			
Title			
AC97			
Size B	Document Number	GA-8IR2003	Rev 2.0
Date:	Monday, February 10, 2003	Sheet 26	of 34

LINE-IN

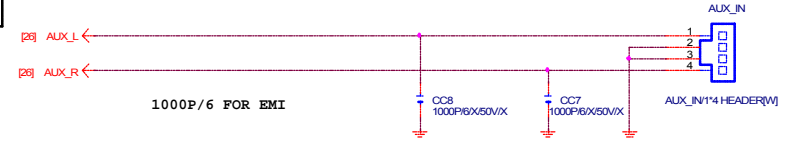
模組化線路



CDIN

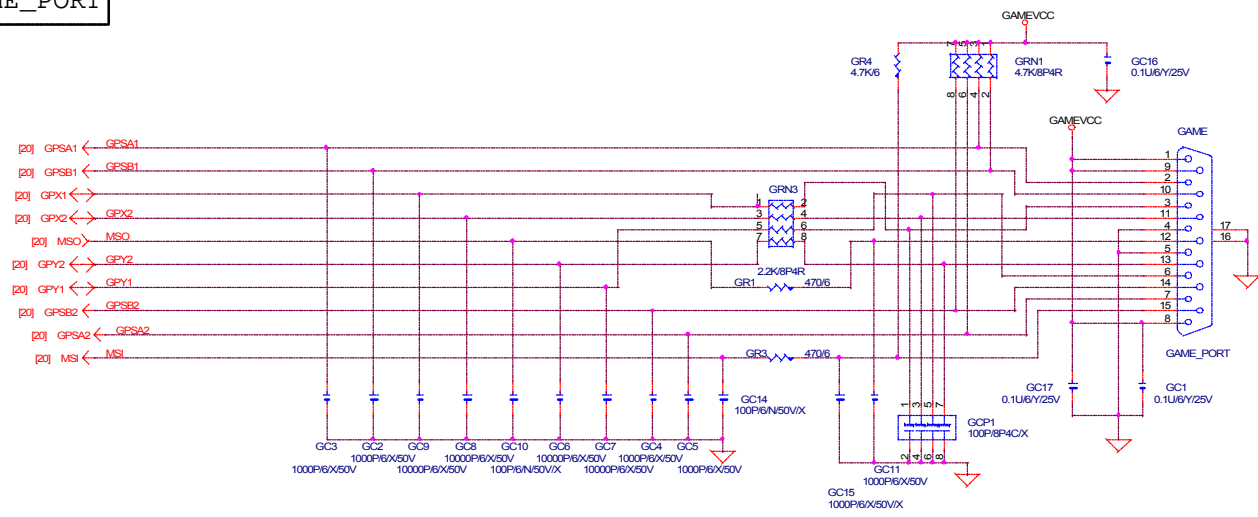


AUX_IN



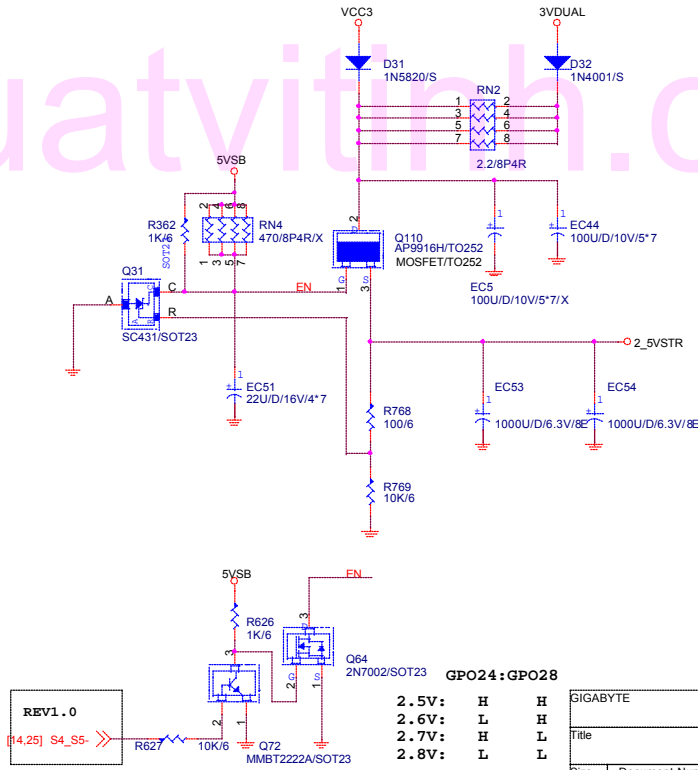
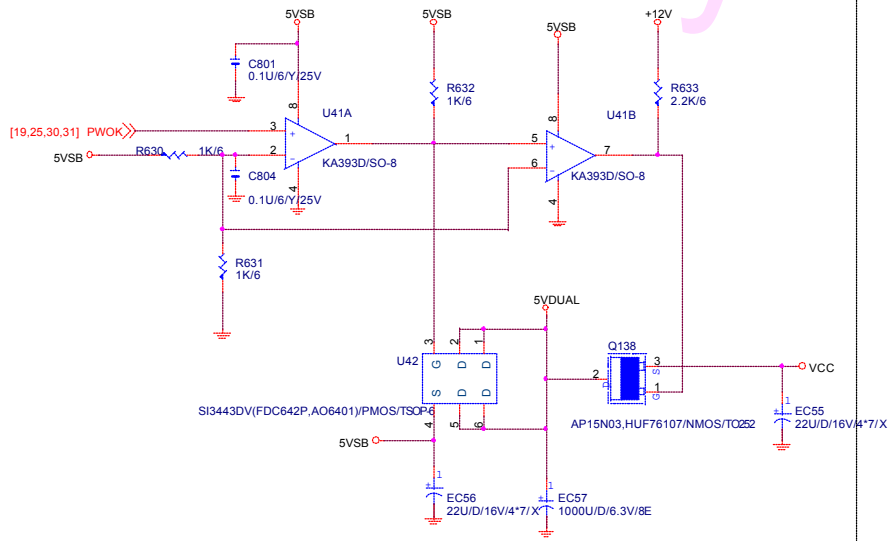
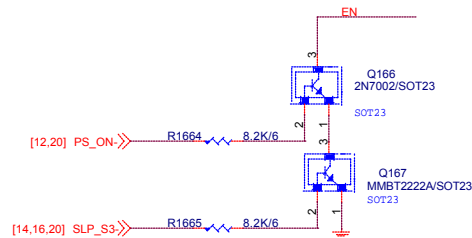
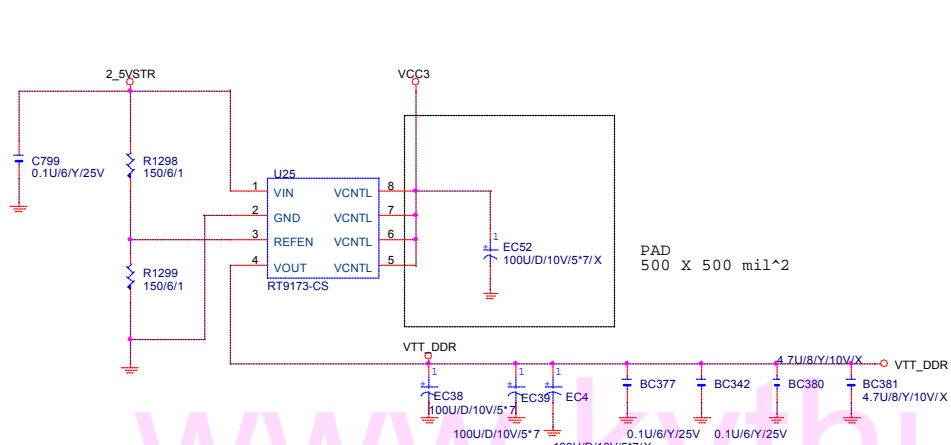
www.kythuatchitinh.com

GAME_PORT



GIGABYTE		
Title		
PHONE JACK, GAME PORT		
Size	Document Number	Rev
Custom	GA-8IR2003	2.0
Date:	Monday, February 10, 2003	Sheet 27 of 34

1. 2.5V VTT_DDR LINEAR SOLUTION



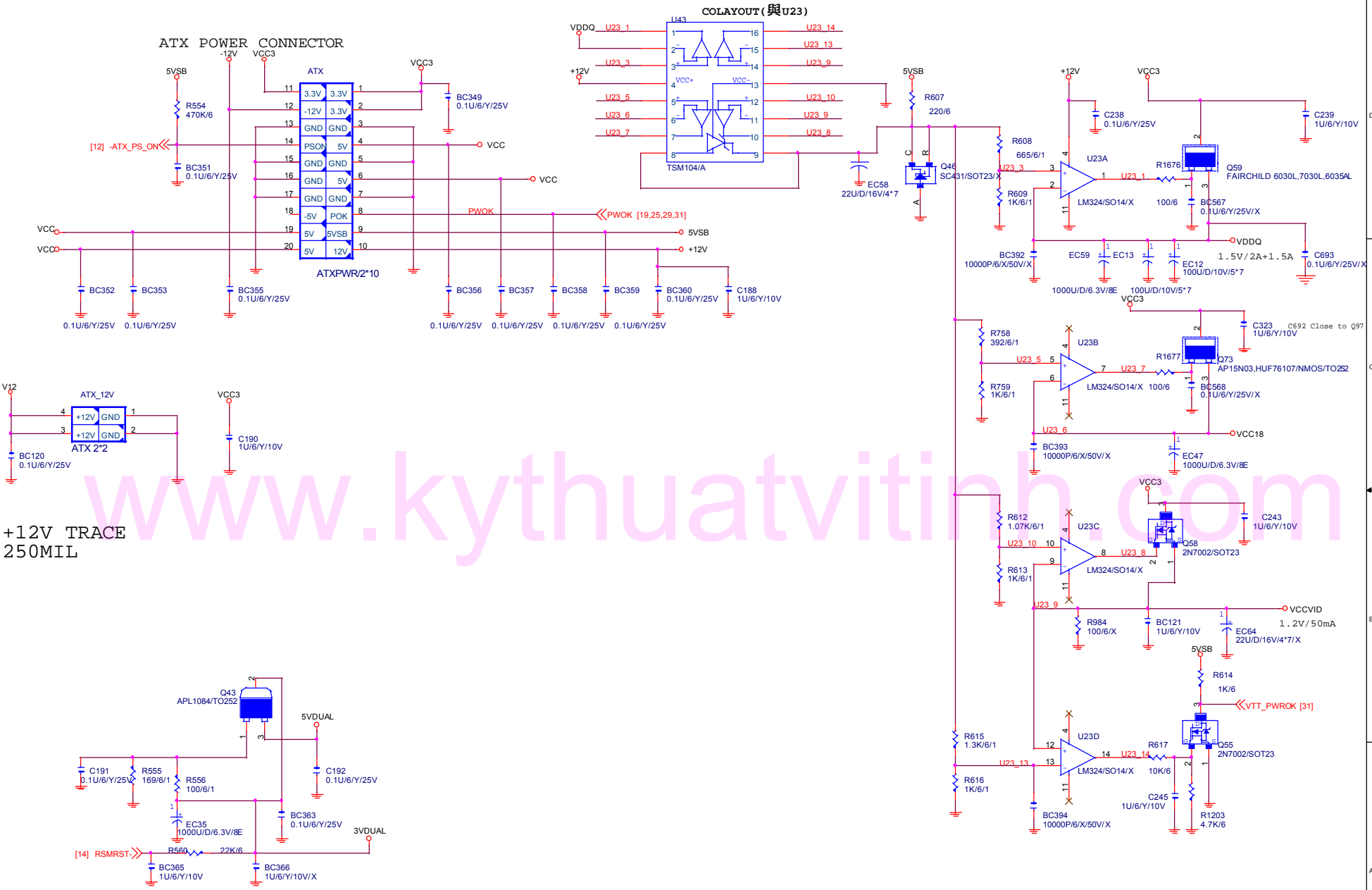
5VDUAL CIRCUIT

REV1.0
[14.25] S4_S5-

GPO24:GPO28

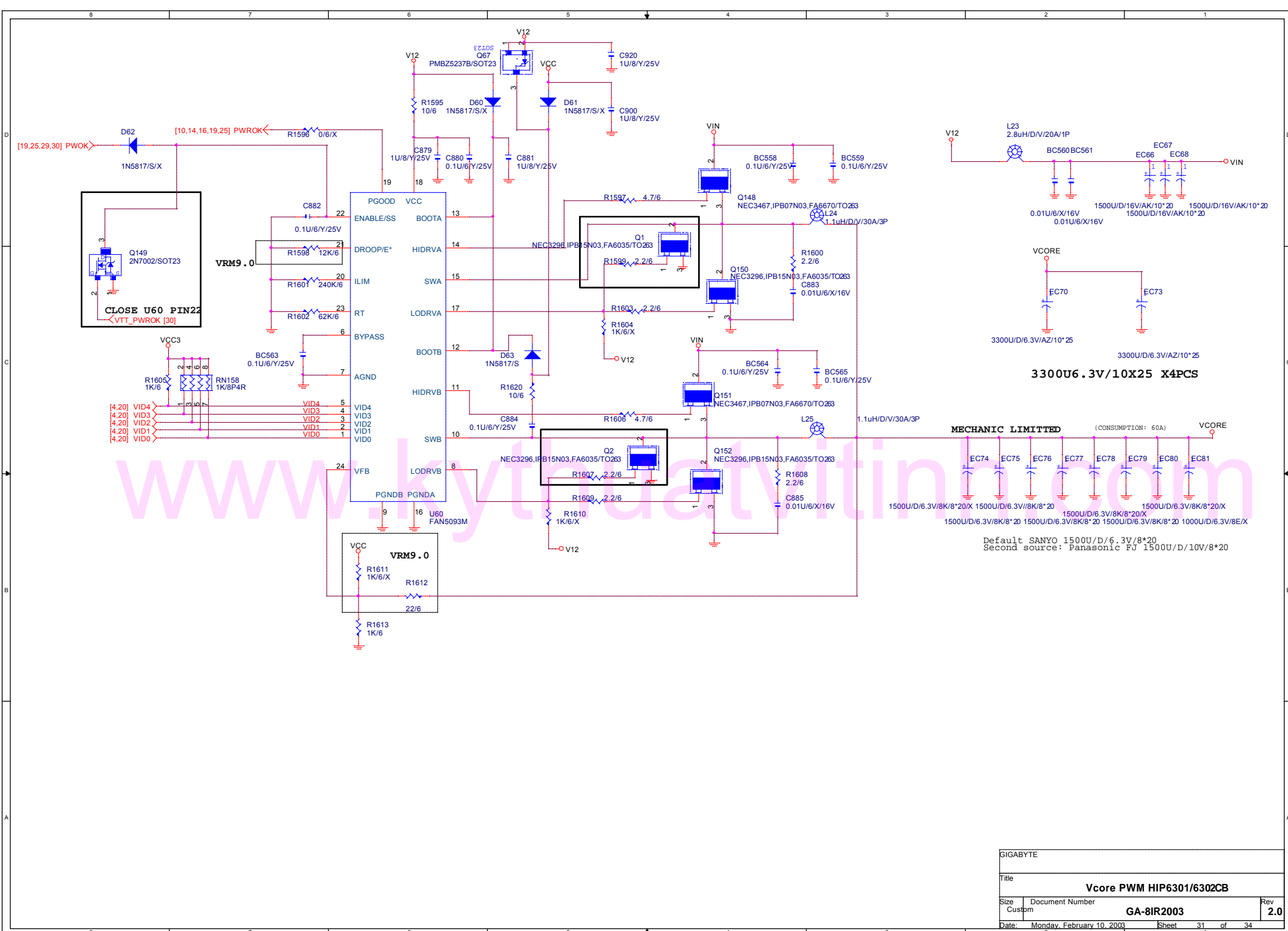
2.5V:	H	H
2.6V:	L	H
2.7V:	H	L
2.8V:	L	L

GIGABYTE	
Title	
DDR POWER	
Size B	Document Number
	GA-8IR2003
Date: Monday, February 10, 2003	Rev 2.0
Sheet 29	of 34

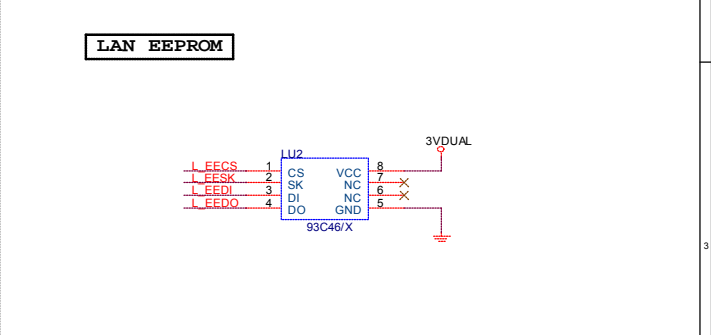
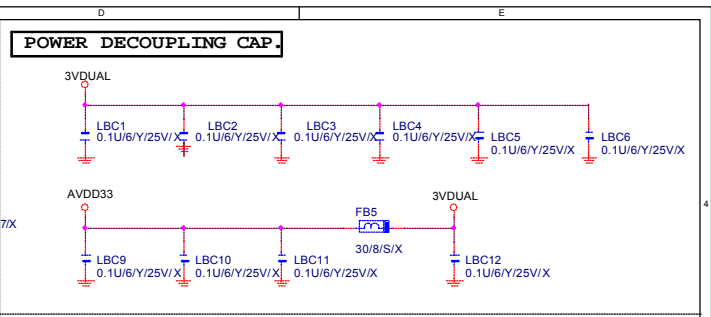
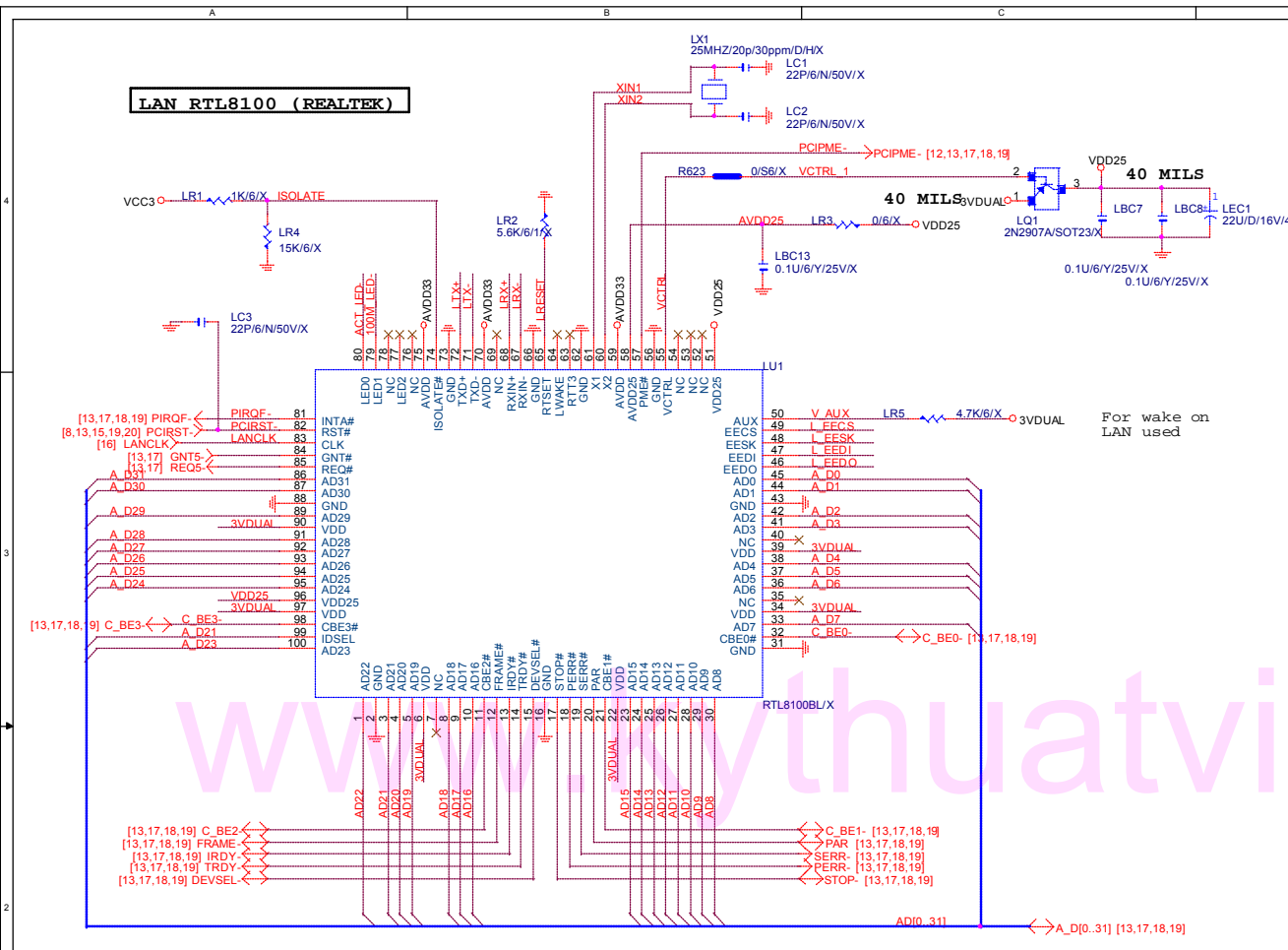


+12V TRACE
250MIL

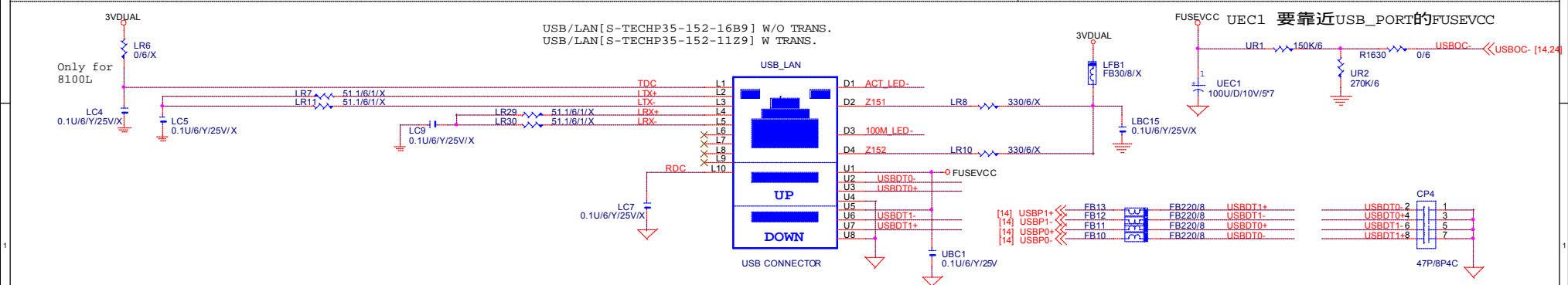
GIGABYTE			
Title			
Misc. PWR & ATX CONN.			
Size B	Document Number	GA-8IR2003	Rev 2.0
Date:	Monday, February 10, 2003	Sheet 30	of 34



GIGABYTE	
Title	
Vcore PWM HIP6301/6302CB	
Size	Document Number
Custom	GA-8IR2003
Date:	Monday, February 10, 2003
Sheet	31 of 34
Rev	2.0



8100/8100B NOTE:
 Pin 65 pull-down (5.6K for 8100B)
 Pin 65 pull-down (1.8K for 8100)
 R502 remove pull-down (1.8K for 8100B)
 R502:0/6 pull-down (1.8K for 8100)



GIGABYTE		
LAN RTL8100B		
Title	Document Number	Rev
	GA-8IR2003	2.0
Size Custom	Date: Monday, February 10, 2008	Sheet 32 of 34

GIGABYTE GA-8IR2003 GPIO LIST

Revision 2.0

SHEET

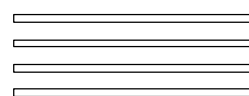
TITLE

GPI		
GPI0/REQA-	NA	PULL 8.2K TO VCC3
GPI1/REQ5-		PULL 2.7K TO VCC
GPI2/PIRQE-	ID	PULL 8.2K TO VCC3 (default)
GPI3/PIRQF-		PULL 8.2K TO VCC3
GPI4/PIRQG-		PULL 8.2K TO VCC3
GPI5/PIRQH-	ID	PULL 8.2K TO VCC3 (default)
GPI6		PULL 8.2K TO VCC3 (GREEN BUTTON)
GPI7		PULL DOWN 10K TO GND
GPI8	ID	PULL 8.2K TO VCC3 (default)
GPI9	NA	NOT IMPLEMENTED
GPI10	NA	NOT IMPLEMENTED
GPI11		PULL 4.7K TO 3VDUAL (SMBALERT)
GPI12/LPCPME-		PULL 8.2K TO 3VDUAL (PME-)
GPI13		NC
GPI14	NA	NOT IMPLEMENTED
GPI15	NA	NOT IMPLEMENTED

SHEET

TITLE

GPO		
GPO16	NA	PULL 8.2K TO VCC3 (CAN'T PULL DOWN) 因為會 decode bios address 不正確:FF
GPO17		PULL 8.2K TO VCC3 (GNT5-)
GPO18	NA	PULL 8.2K TO VCC3 此OUTPUT 會 TOGGLE. (在開機時) BIOS POST OK
GPO19		PULL 8.2K TO VCC3
GPO20		PULL 8.2K TO VCC3
GPO21		PULL 8.2K TO VCC3 (TOP BLOCK)
GPO22		PULL 8.2K TO VCC3
GPO23		PULL 8.2K TO VCC3
GPO24		PULL 4.7K TO 3VDUAL
GPO25		PULL 4.7K TO 3VDUAL (POWER LED)
GPO26		NOT IMPLEMENTED
GPO27		PULL 8.2K TO 3VDUAL (POWER LED)
GPO28		PULL 8.2K TO 3VDUAL
GPO32		PULL 8.2K TO 3VDUAL (BIOS WRITE PROTECT)
GPO35		PULL DOWN 10K TO GND (POWER LED)

		COMPONENT SIDE (0.5 oz. Copper)
		VCC SIDE (1 oz. Copper)
		GND SIDE (1 oz. Copper)
		SOLDER SIDE (0.5 oz. Copper)
GIGABYTE		
Title GPIO LIST		
Size Custom	Document Number GA-8IR2003	Rev 2.0
Date: Monday, February 10, 2003	Sheet 33	of 34

