

GIGABYTE GA-8IE Schematics

Revision 1.1

SHEET

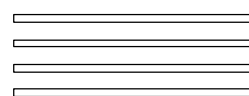
TITLE

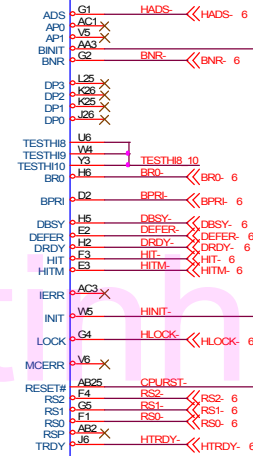
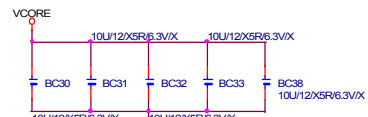
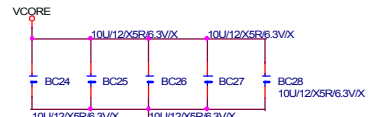
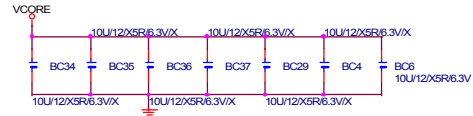
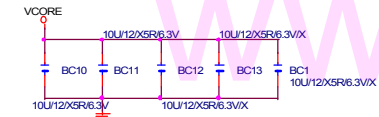
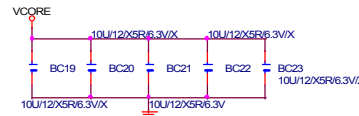
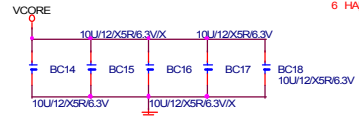
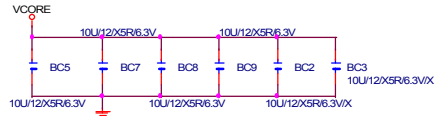
01	COVER SHEET
02	BOM & PCB MODIFY HISTORY
03	WILLIAMATE_478A
04	WILLIAMATE_478B
05	WILLIAMATE_478C
06	MCH-BROOKDALE-E_A
07	MCH-BROOKDALE-E_B
08	MCH-BROOKDALE-E_C
09	MD0~63
10	DDR1~2
11	DDR-TERM
12	AGP
13	ICH4_1
14	ICH4_2
15	FWH (SINGLE BIOS)
16	ICS950223 CLOCK GEN
17	PCI1_2
18	PCI3_4
19	PCI5
20	ITE LPC I/O
21	IDE
22	KB_PS2

SHEET

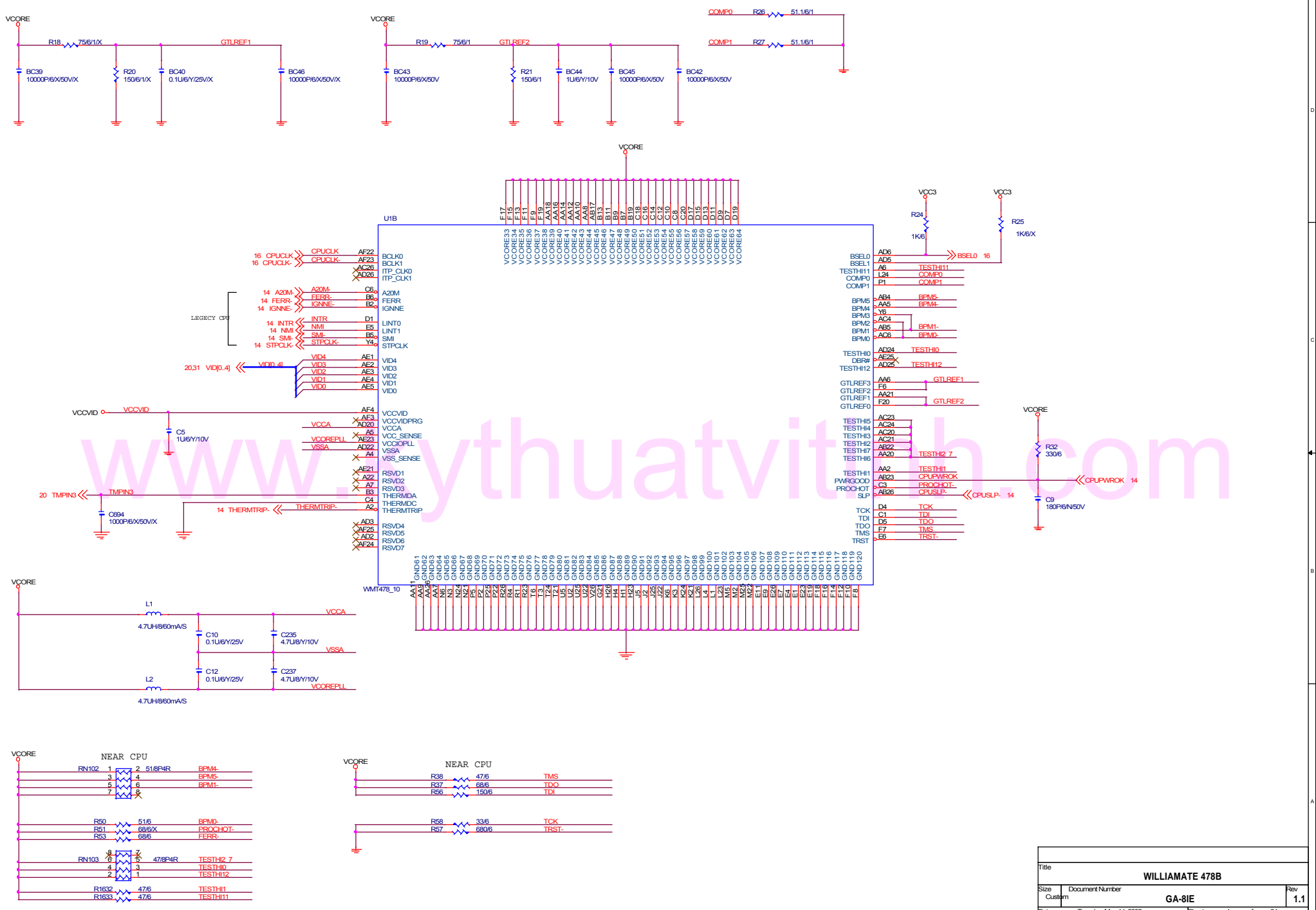
TITLE

23	COM_LPT_FDD
24	F-USB1 & F-USB2
25	FPANEL
26	CODEC
27	AUDIO_GAMEPORT
28	AUDIO_SPDIF
29	DDR POWER
30	POWER1
31	POWER2
32	LAN RTL8100B & B-USB CONNECTOR
33	GPIO LIST
34	PCI ROUNT LIST
35	
36	
37	
38	
PCB	十美,育富,群祥,智恩 4v藍C

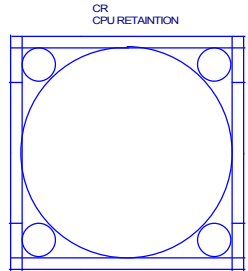
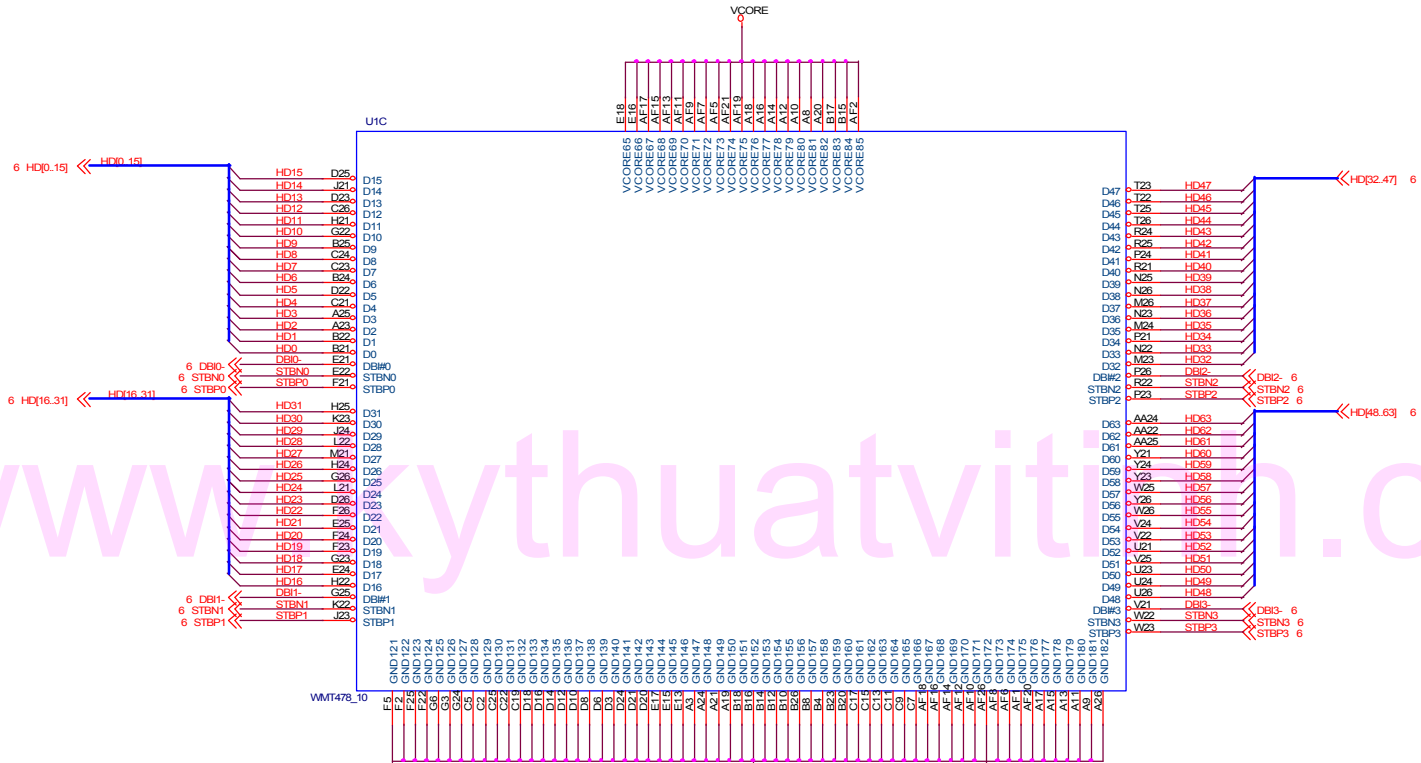
		
GIGABYTE		
Title COVER SHEET		
Size Custom	Document Number GA-8IE	Rev 1.1
Date: Tuesday, May 14, 2002		Sheet 1 of 34



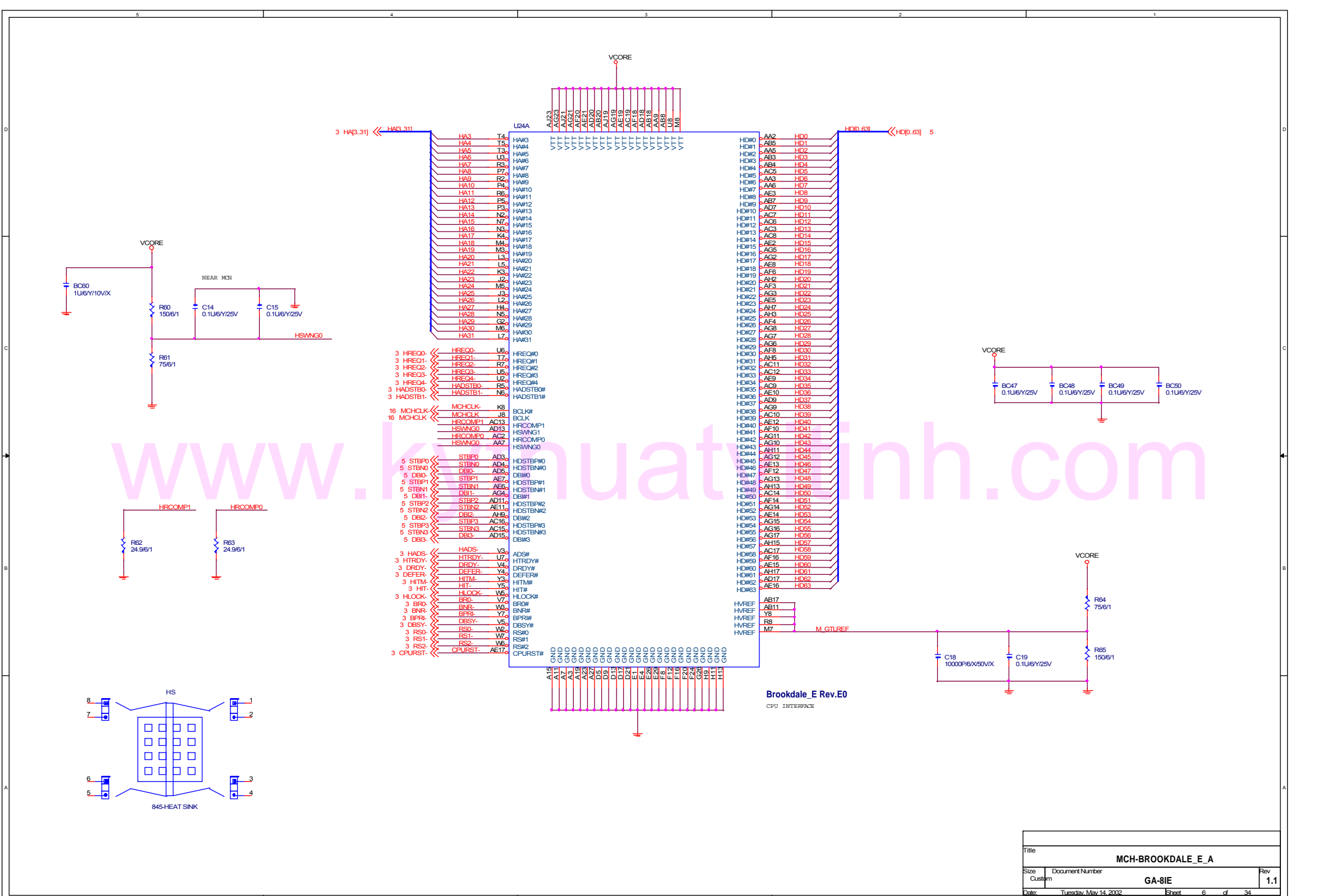
Title			WILLIAMATE 478A		
Size	Document Number			Rev	1.1
Custom	GA-8IE				
Date:	Tuesday, May 14, 2002	Sheet	3	of	34



Title			WILLIAMATE 478B	
Size	Document Number	GA-8IE		Rev
Custom				1.1
Date:	Tuesday, May 14, 2002	Sheet	4	of 34

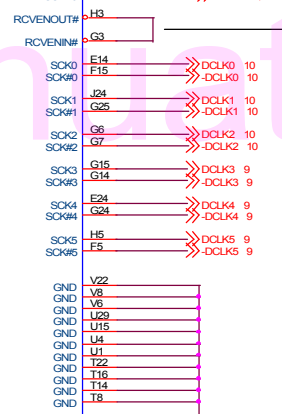
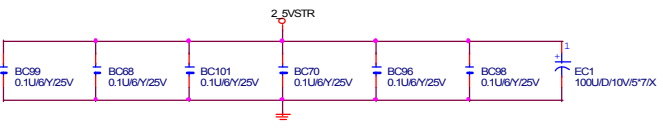
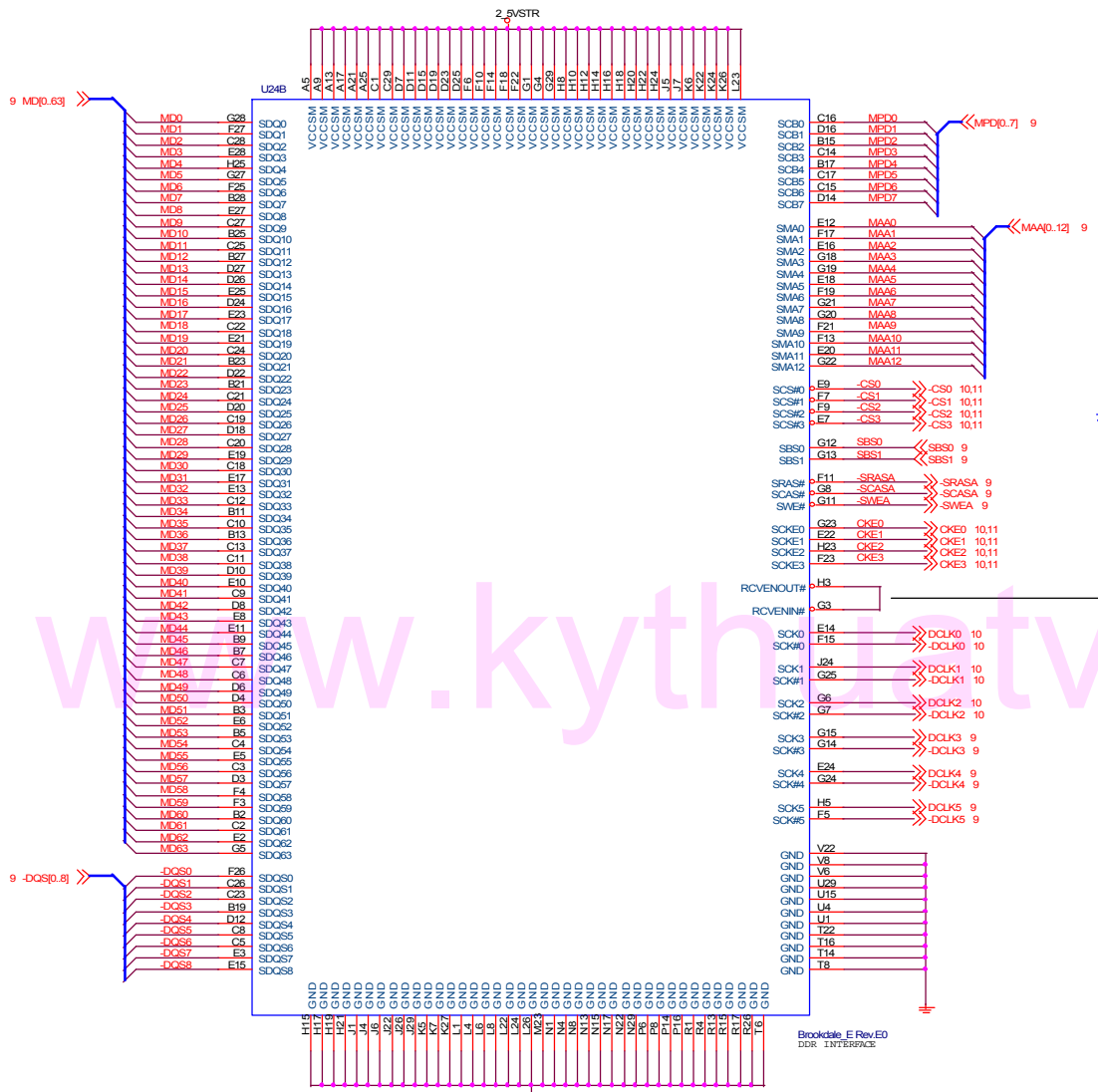


Title			WILLIAMATE 478C	
Size	Document Number	Rev		1.1
Custom	GA-8IE			
Date:	Tuesday, May 14, 2002	Sheet	5	of 34



www.knuat.inh.com

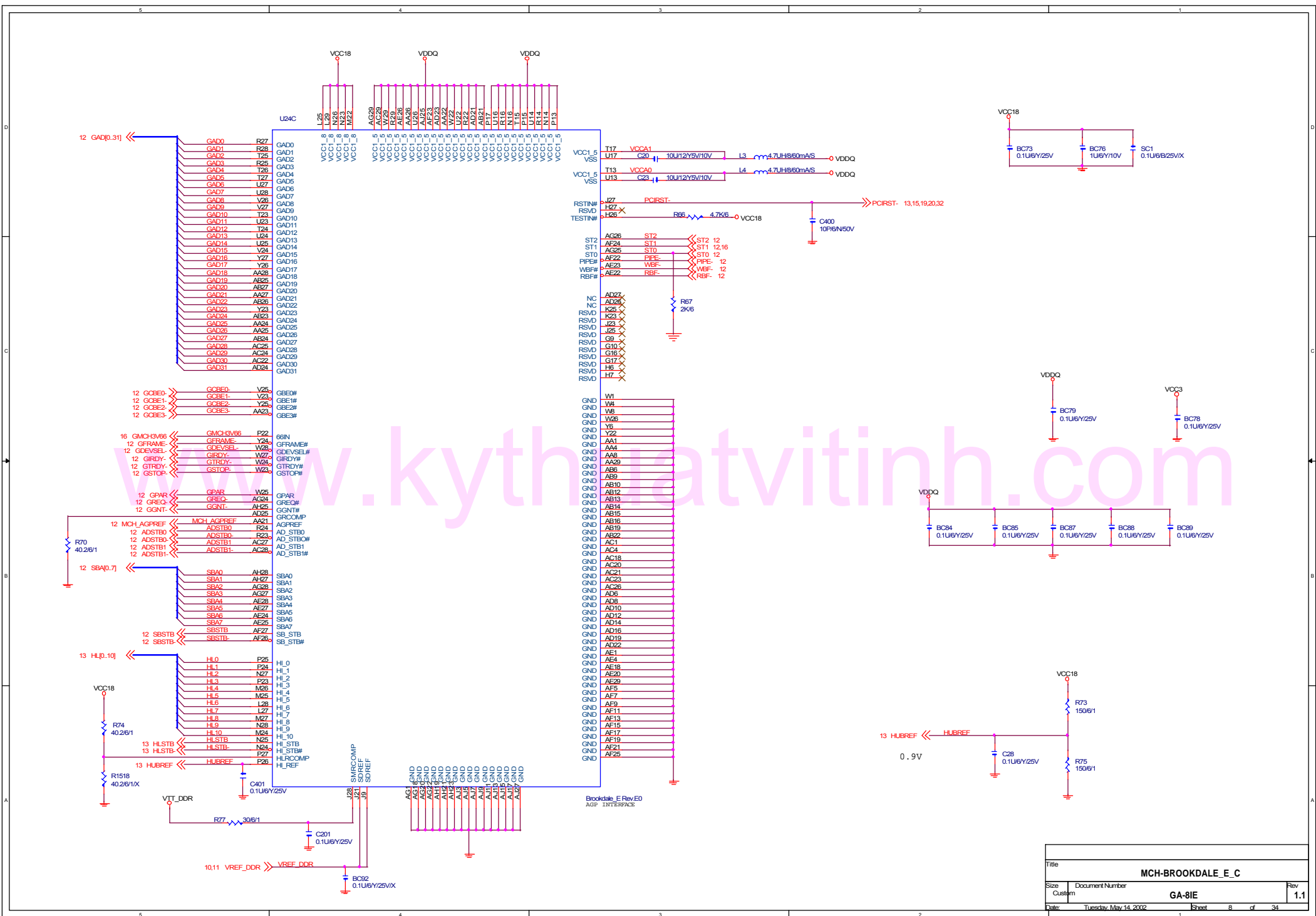
Title			MCH-BROOKDALE_E_A
Size	Document Number	Rev	1.1
Custom	GA-8IE		
Date	Tuesday, May 14, 2002	Sheet	6 of 34



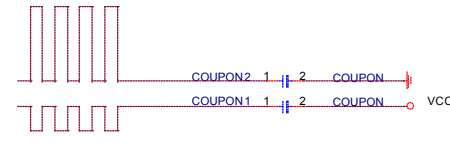
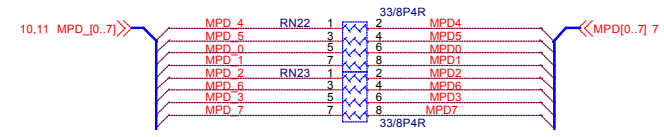
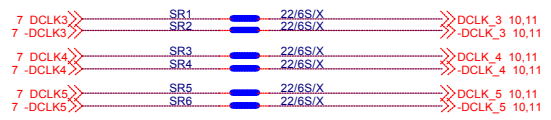
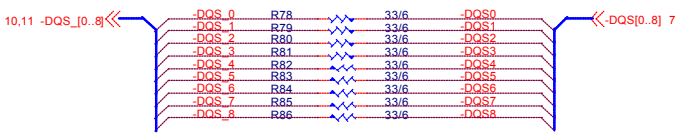
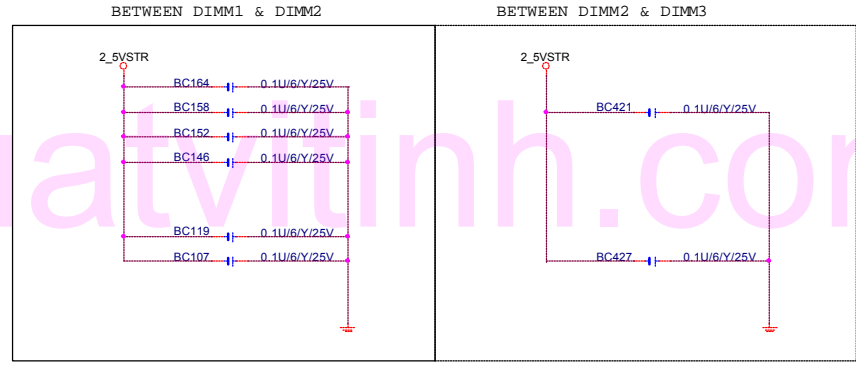
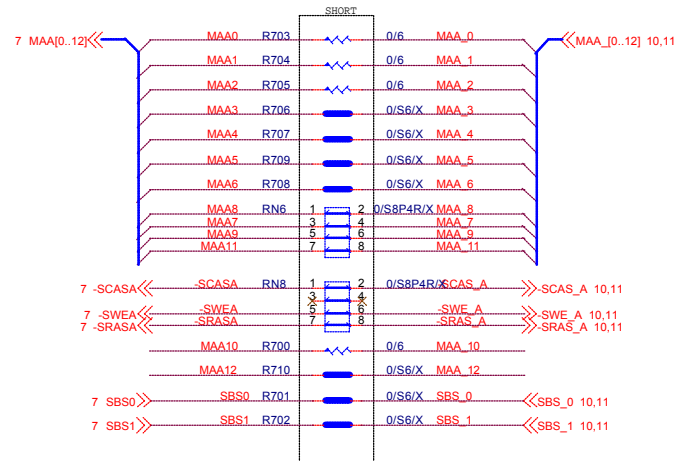
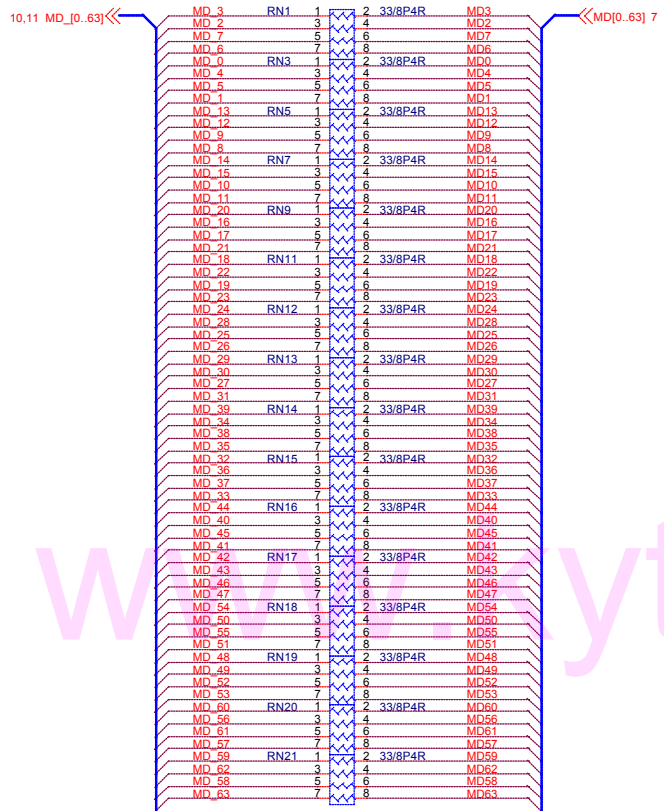
注意:DDR版要在 SOLDER SIDE
LAY 1 INCH 長度 (5MIL)

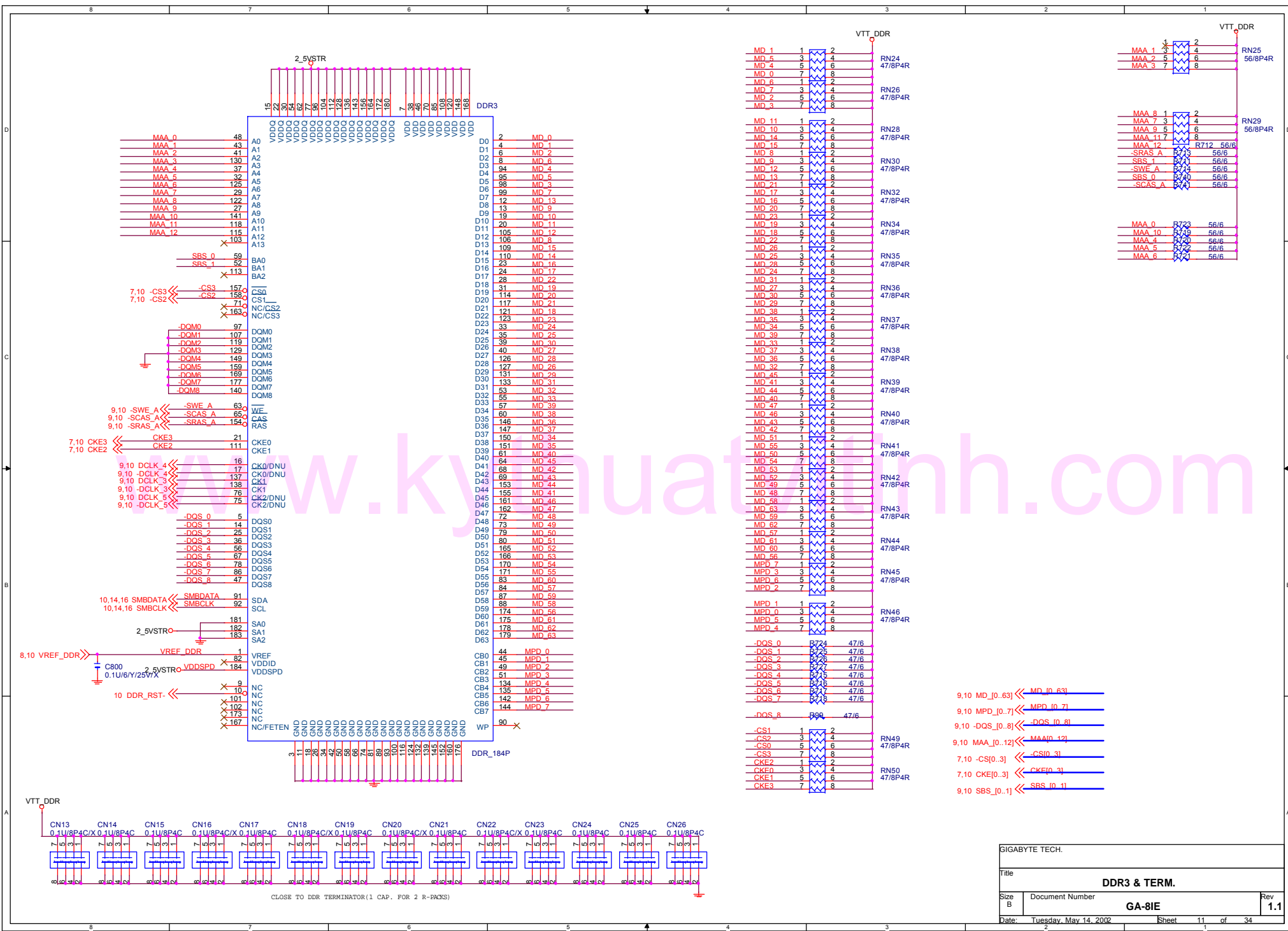
Brookdale E Rev.E0
DDR INTERFACE

Title			MCH-BROOKDALE_E_B
Size	Document Number	Rev	1.1
Custom	GA-8IE		
Date:	Tuesday, May 14, 2002	Sheet	7 of 34



Title			MCH-BROOKDALE_E_C		
Size	Document Number	Rev		1.1	
Custom	GA-8IE				
Date:	Tuesday, May 14, 2002	Sheet	8	of 34	



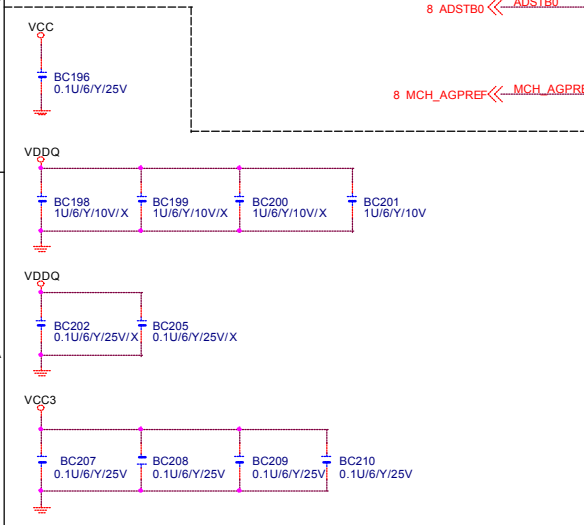
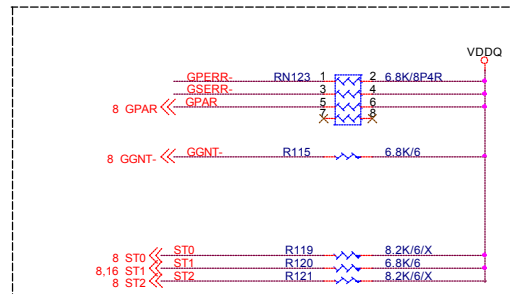
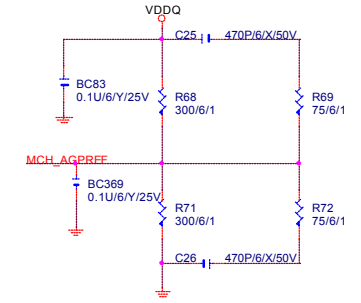
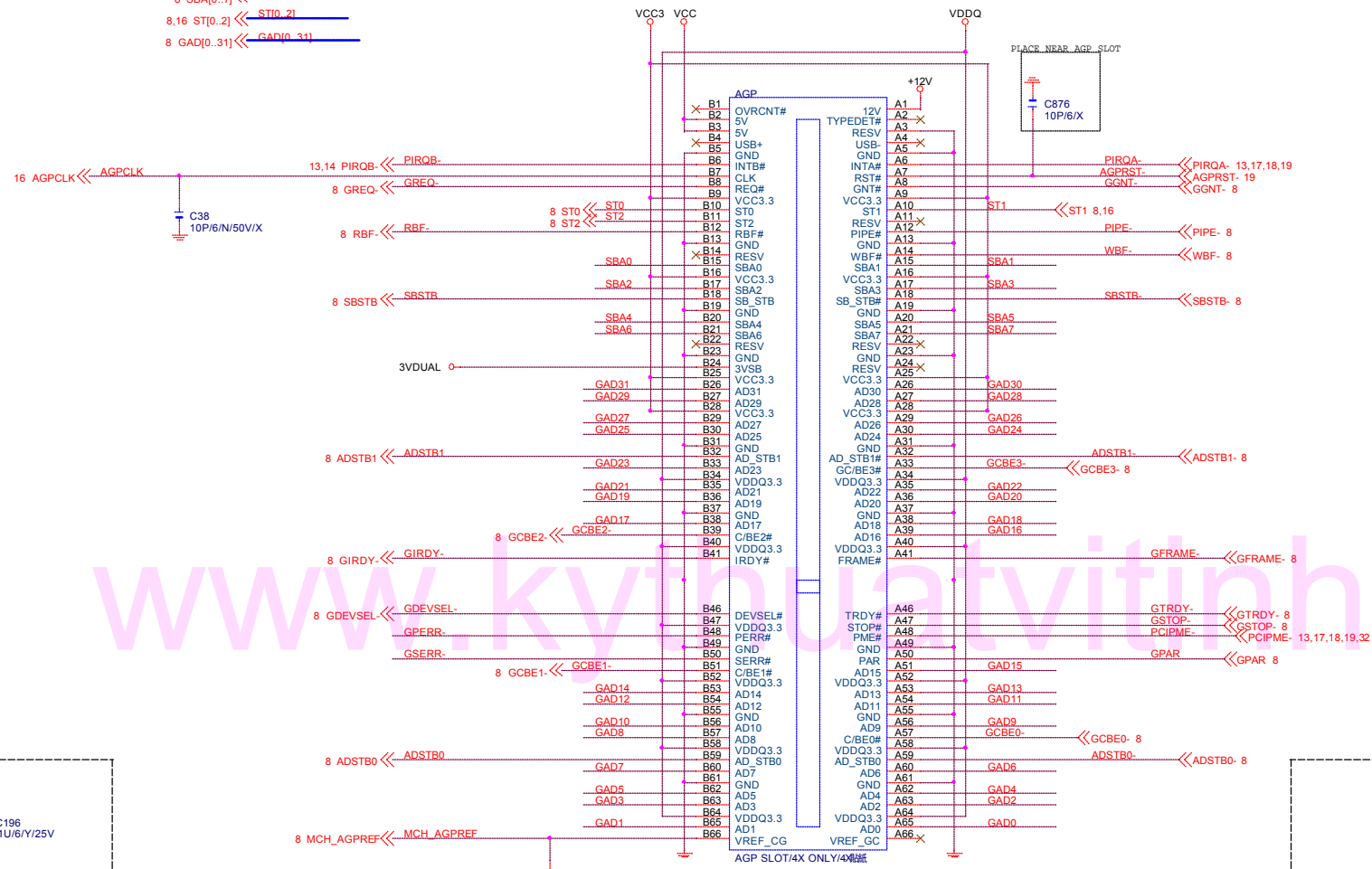


CLOSE TO DDR TERMINATOR(1 CAP. FOR 2 R-PACKS)

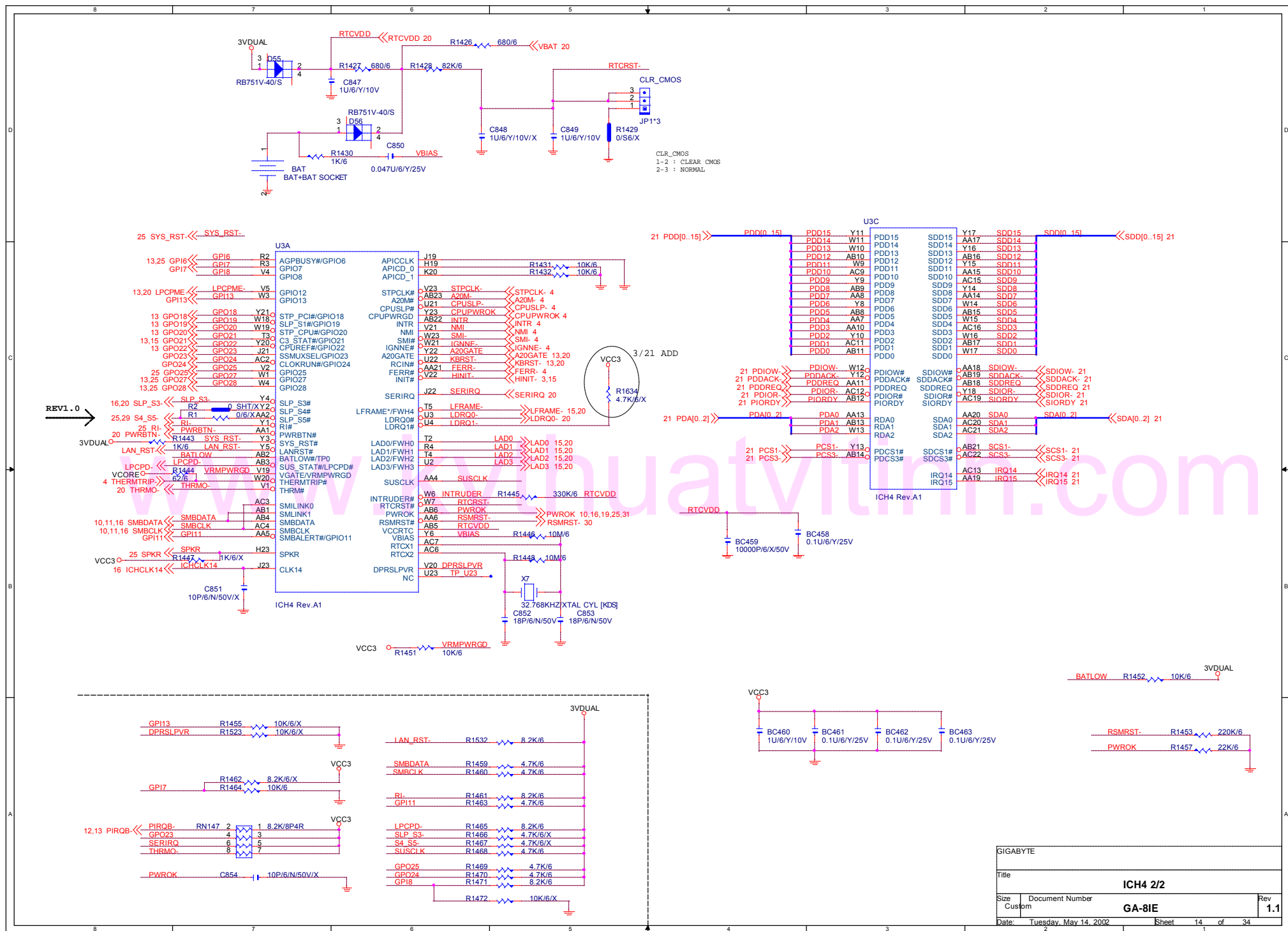
GIGABYTE TECH.	
Title DDR3 & TERM.	
Size B	Document Number GA-8IE
Date Tuesday, May 14, 2002	Rev 1.1
Sheet 11	of 34

4X only

8 SBA[0..7] << SBA[0..7]
8,16 ST[0..2] << ST[0..2]
8 GAD[0..31] << GAD[0..31]

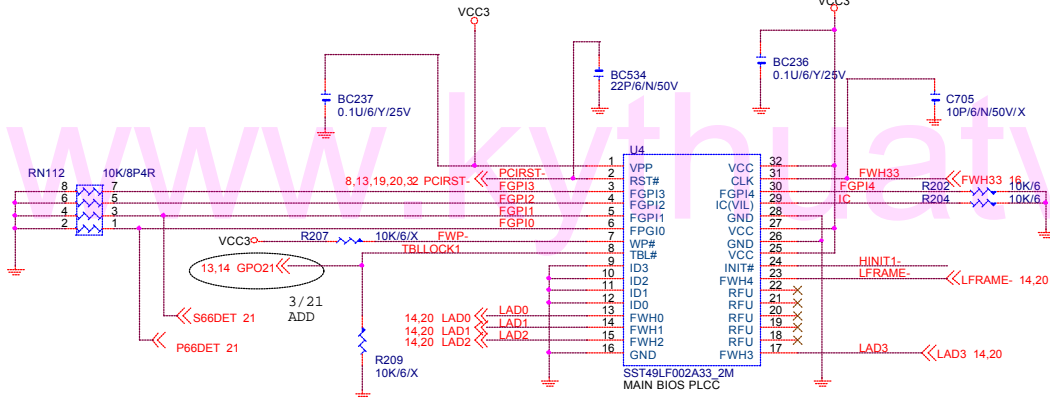
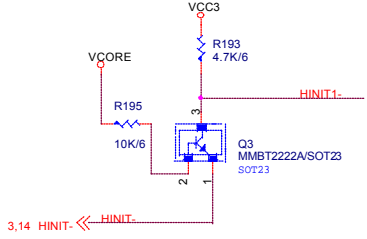


GIGABYTE CORP.			
Title		AGP SLOT	
Size	Document Number	Rev	1.1
Custom	GA-8IE		
Date:	Tuesday, May 14, 2002	Sheet	12 of 34

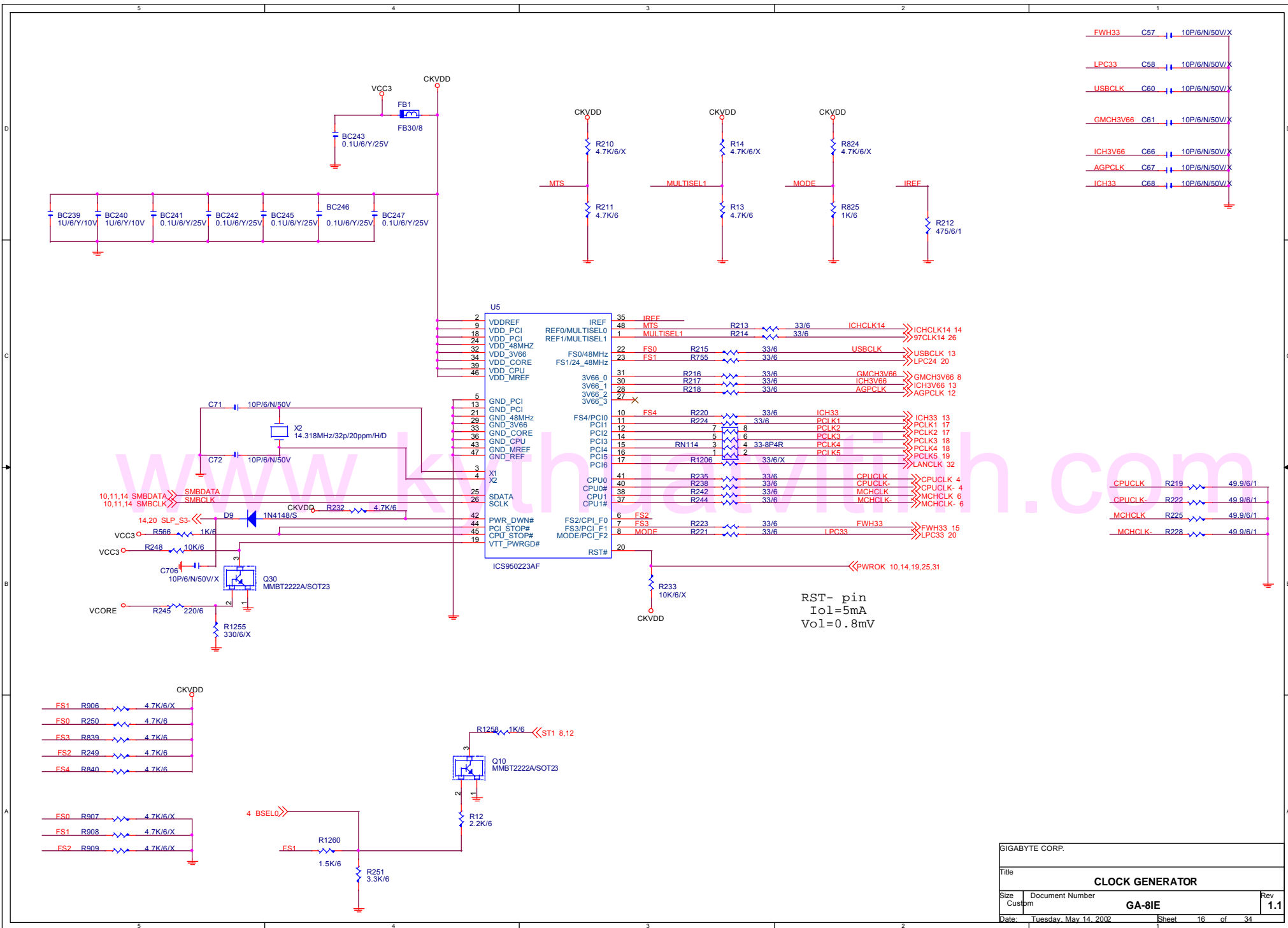


GIGABYTE			
Title		ICH4 2/2	
Size	Document Number	GA-8IE	
Custom			Rev 1.1
Date:	Tuesday, May 14, 2002	Sheet	14 of 34

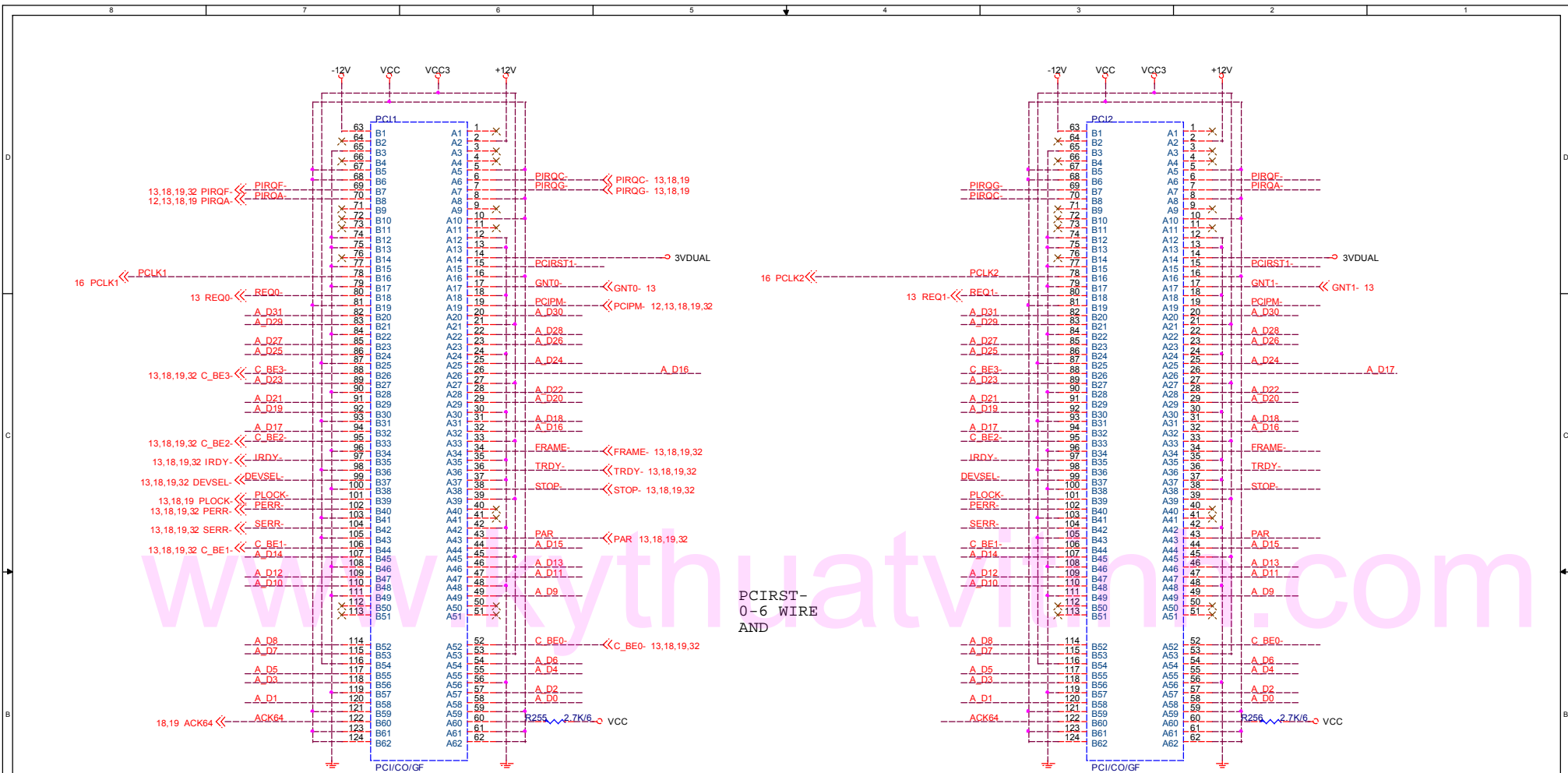
2002/04/15 MODIFY WRITE PROTECT



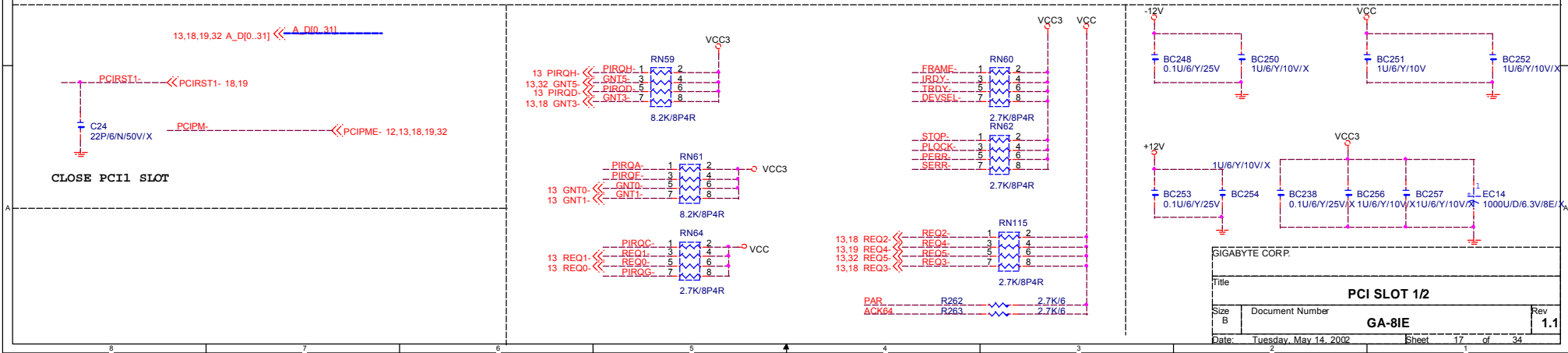
GIGABYTE CORP.			
Title		FWH	
Size	Document Number	GA-8IE	Rev 1.1
Date:	Tuesday, May 14, 2002	Sheet 15	of 34



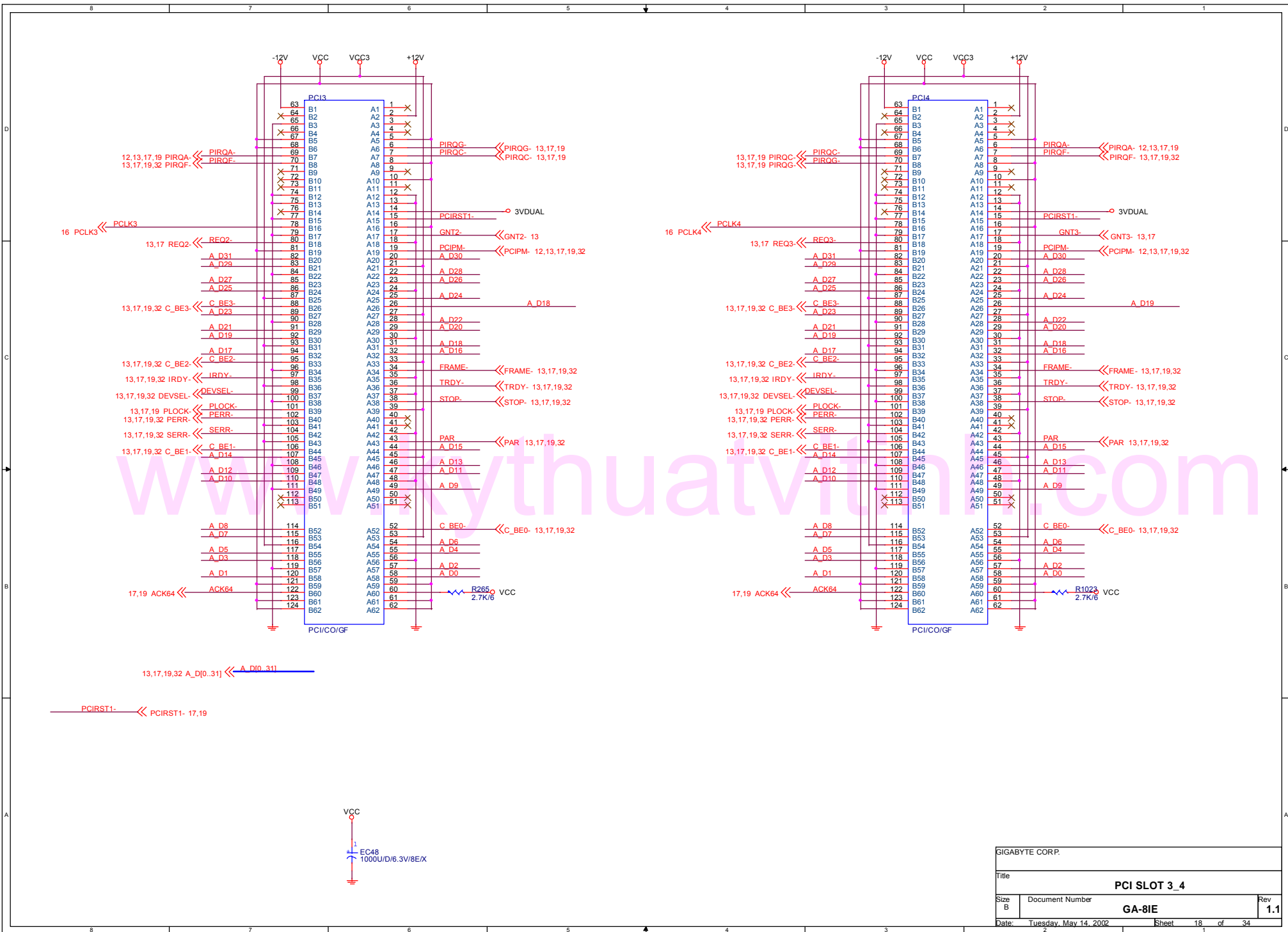
GIGABYTE CORP.		
Title		
CLOCK GENERATOR		
Size	Document Number	Rev
Custom	GA-8IE	1.1
Date:	Tuesday, May 14, 2002	Sheet 16 of 34



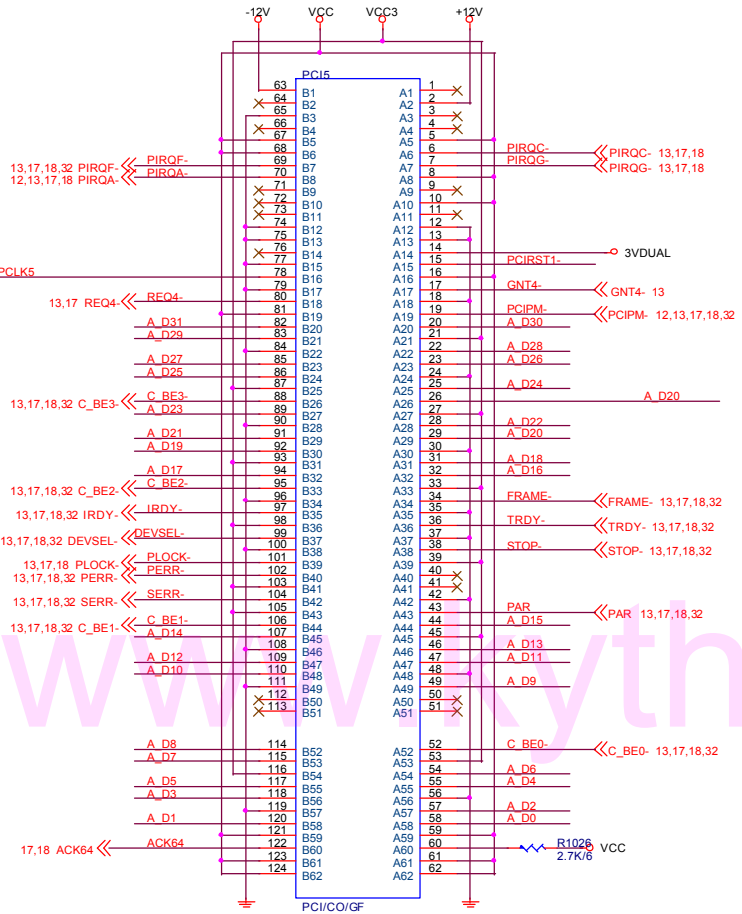
PCI1-0-6 WIRE AND



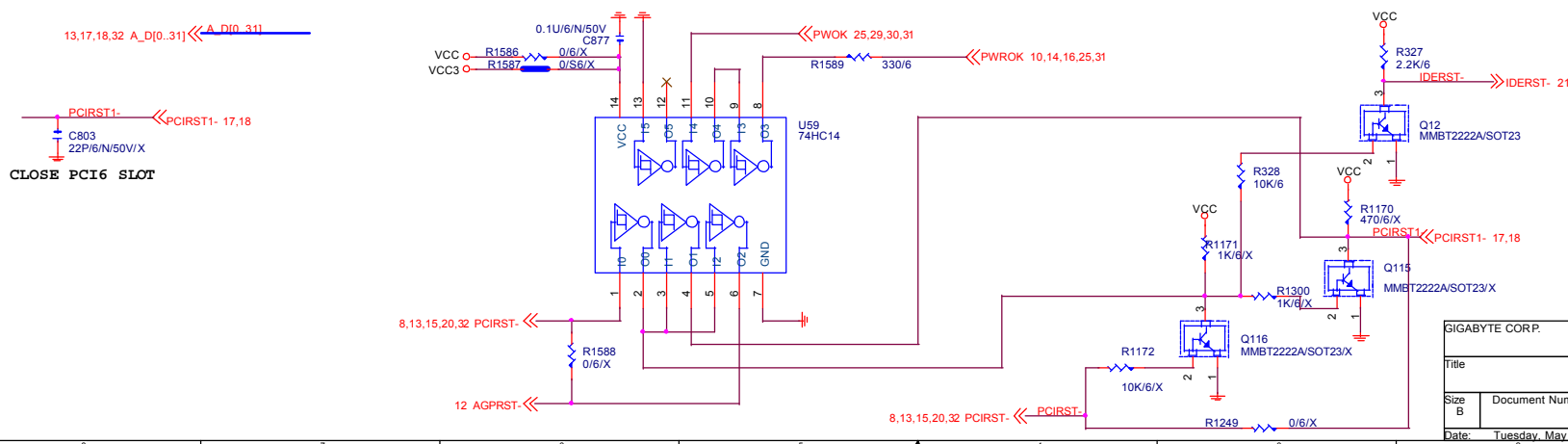
GIGABYTE CORP.		
Title PCI SLOT 1/2		
Size B	Document Number GA-8IE	Rev 1.1
Date: Tuesday, May 14, 2002	Sheet 17	of 34



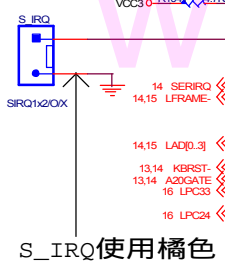
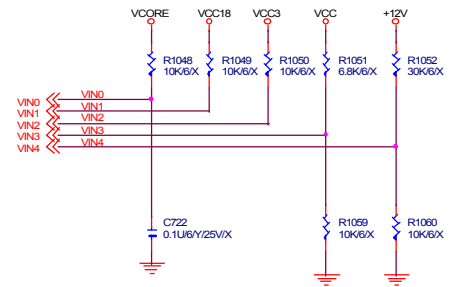
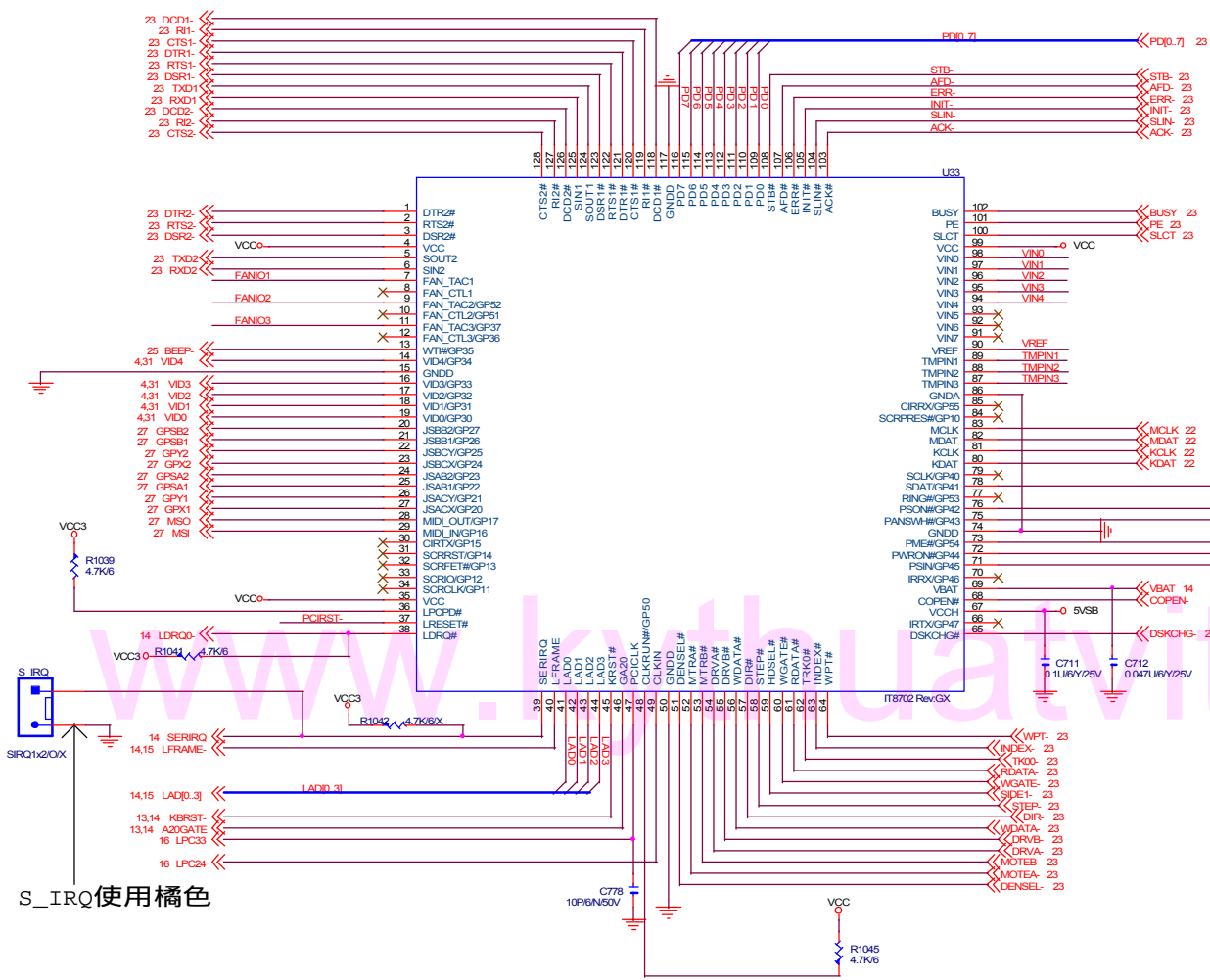
GIGABYTE CORP.			
Title PCI SLOT 3_4			
Size B	Document Number	GA-8IE	Rev 1.1
Date: Tuesday, May 14, 2002	Sheet	18	of 34



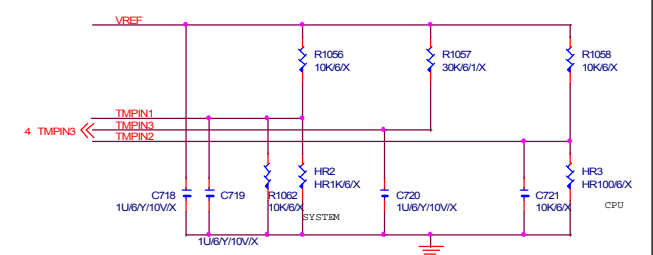
www.thuythuatvithinh.com



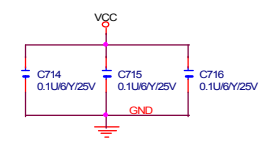
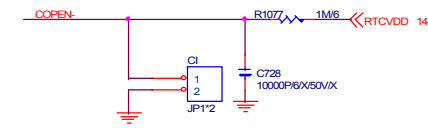
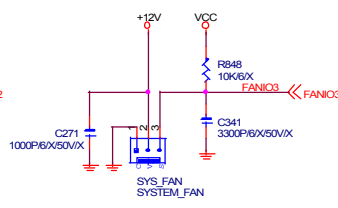
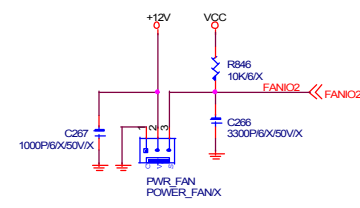
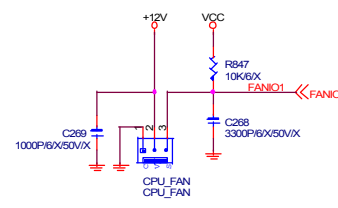
GIGABYTE CORP.			
Title		PCI SLOT 5	
Size B	Document Number	GA-8IE	Rev 1.1
Date: Tuesday, May 14, 2002	Sheet 19	of 34	



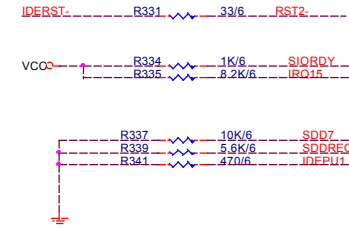
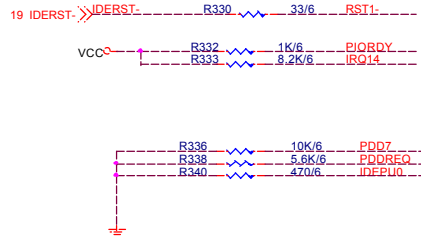
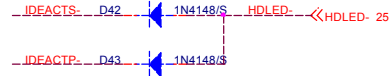
S_IRQ使用橘色



PCIRST- <<PCIRST- 8,13,15,19,32



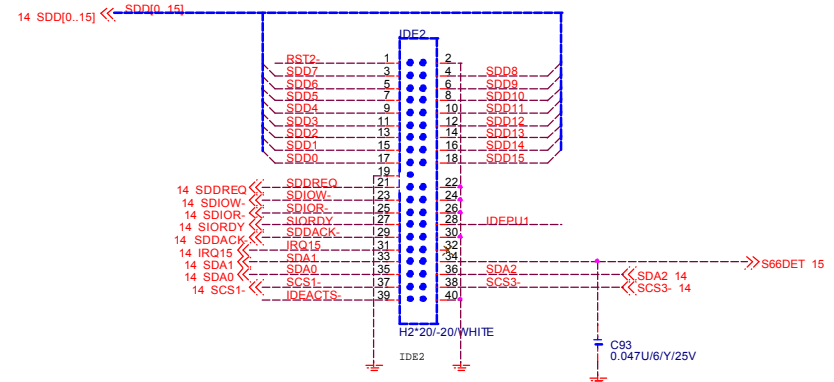
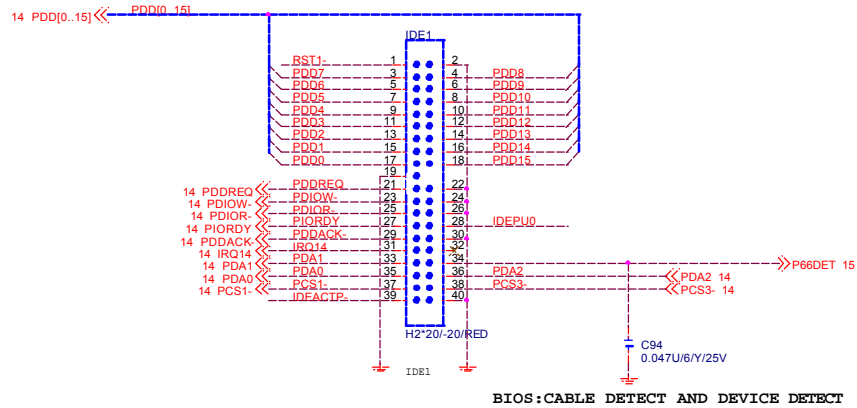
GIGABYTE CORP.		
Title		
ITE LPC I/O		
Size	Document Number	Rev
Custom	GA-8IE	1.1
Date:	Tuesday, May 14, 2002	Sheet 20 of 34



www.kythuathvithinh.com

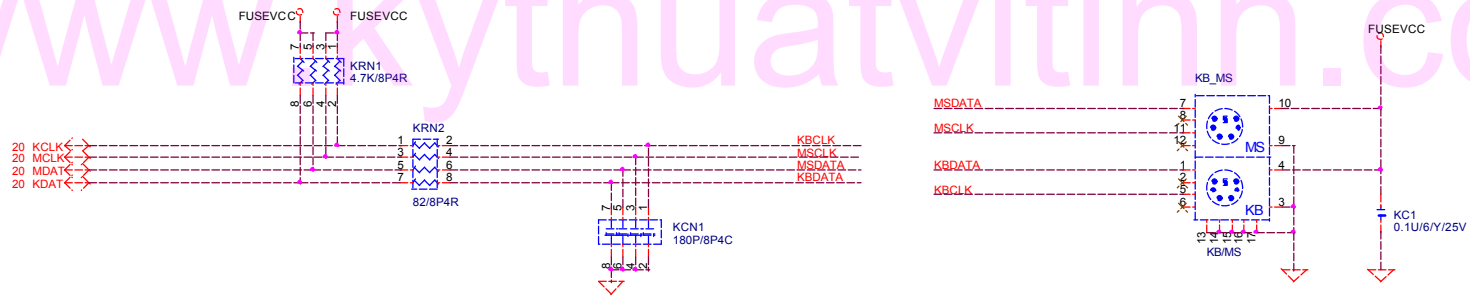
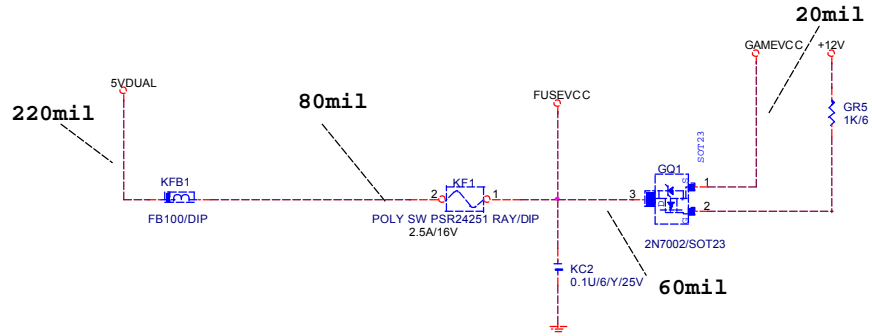
PRIMARY IDE CONNECTOR

SECONDARY IDE CONNECTOR



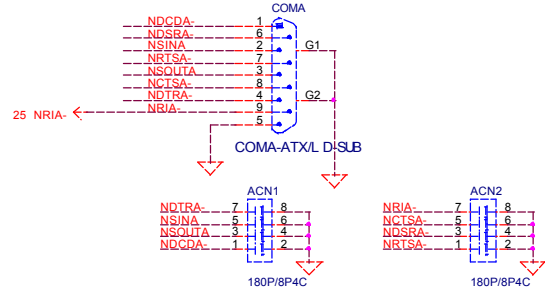
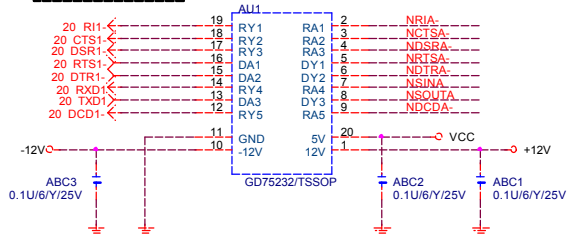
GIGABYTE CORP.			
Title IDE CONNECTOR			
Size B	Document Number	GA-8IE	Rev 1.1
Date: Tuesday, May 14, 2002	Sheet	21	of 34

模組化線路

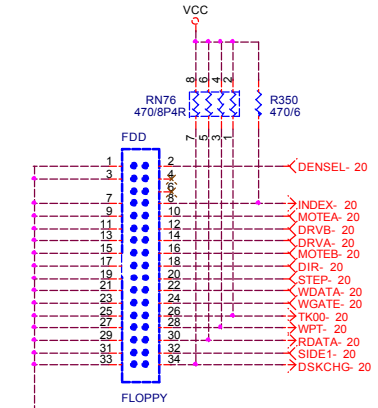


COMA

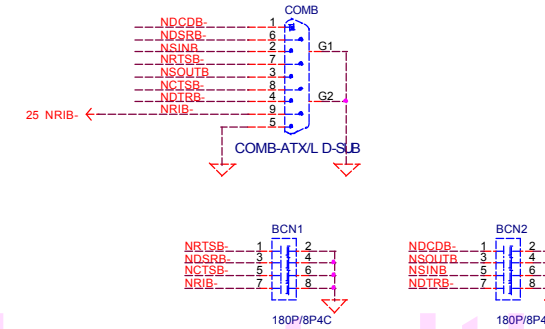
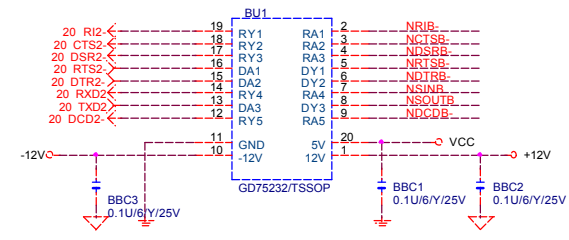
模組化線路



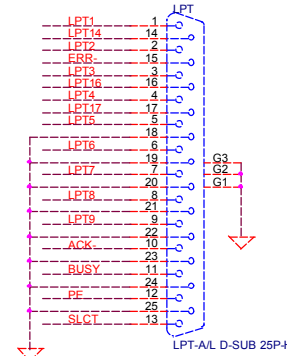
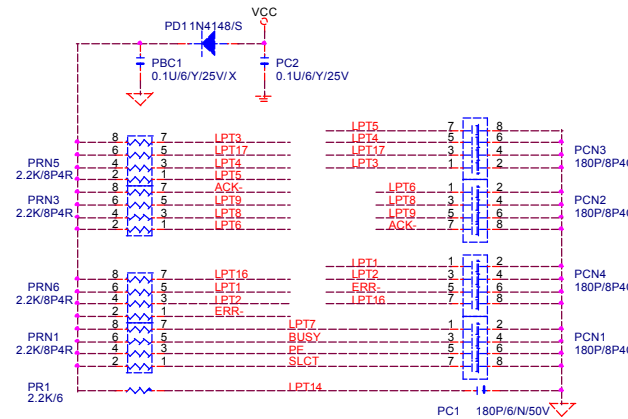
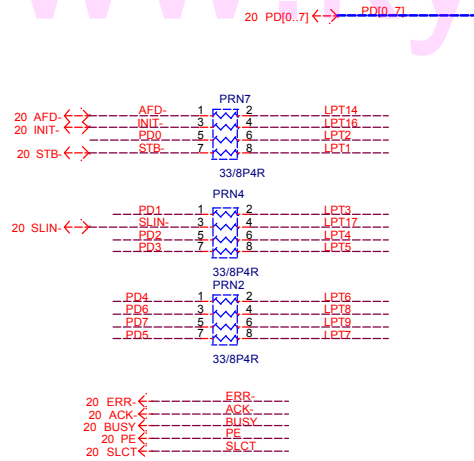
FLOPPY



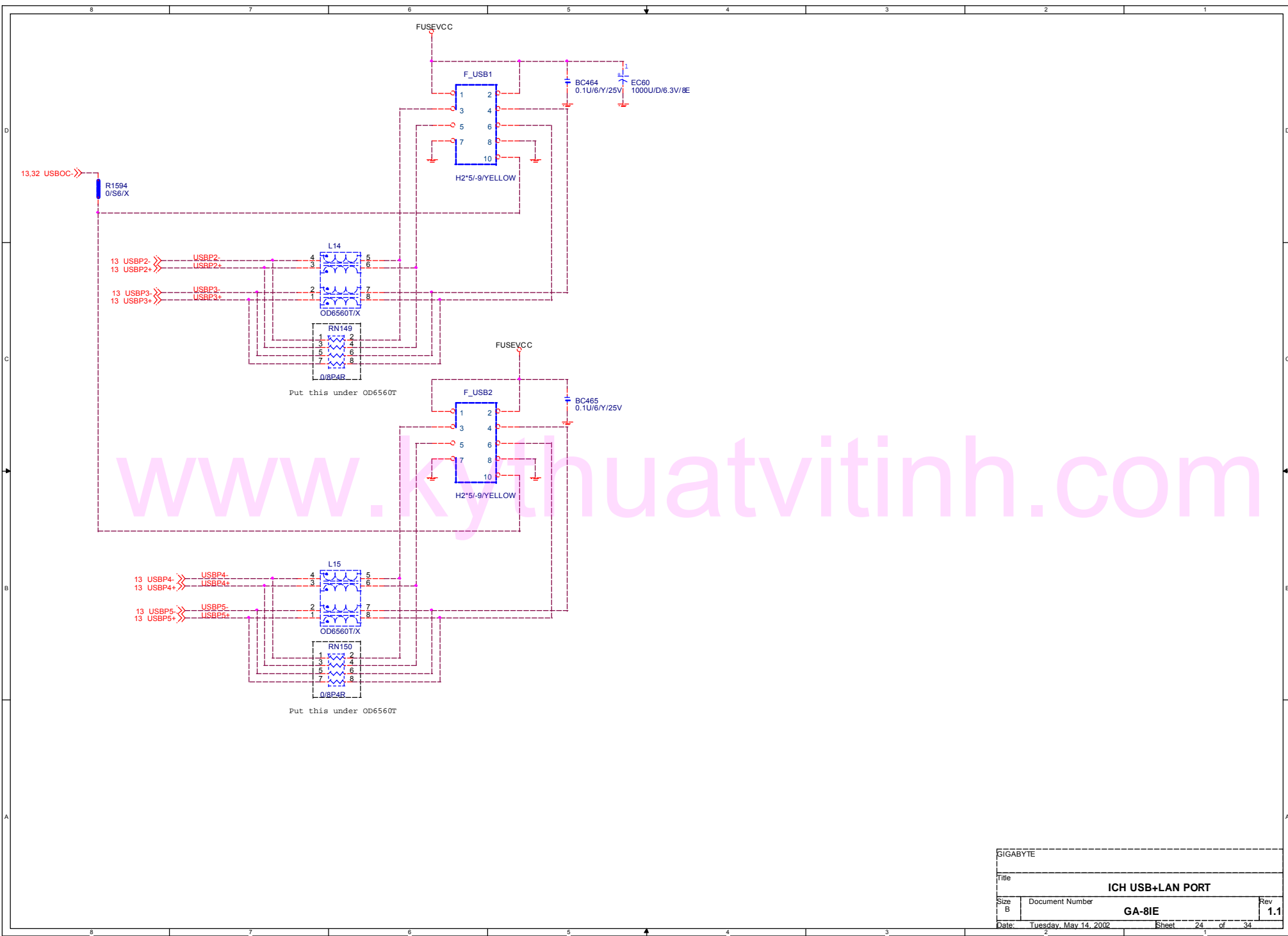
COMB



PRT PORT

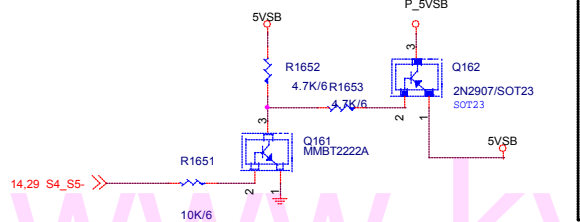
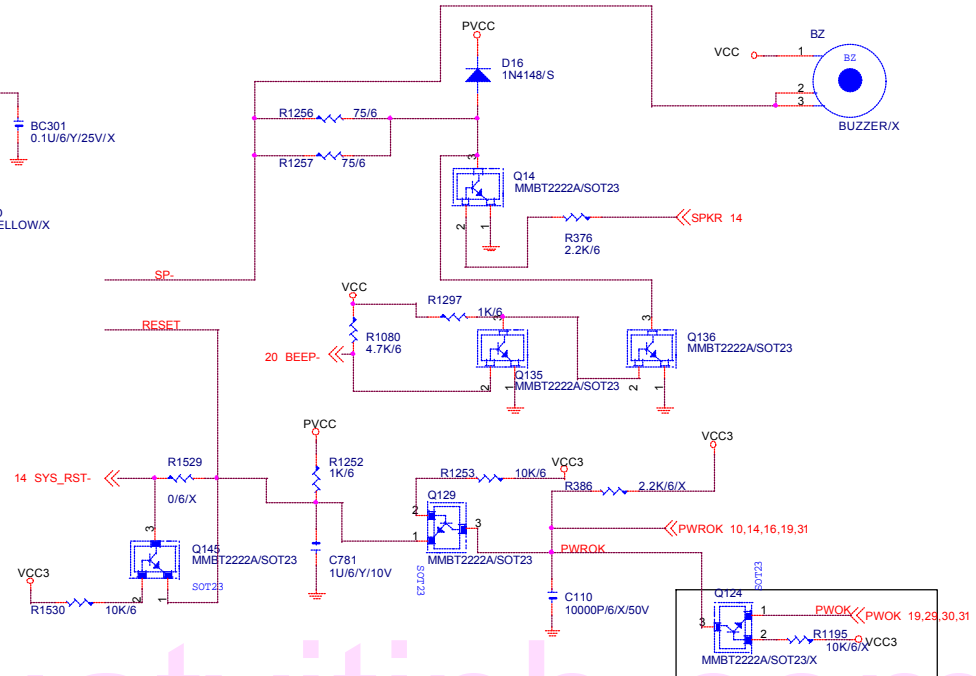
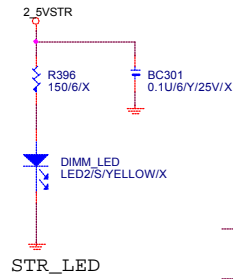
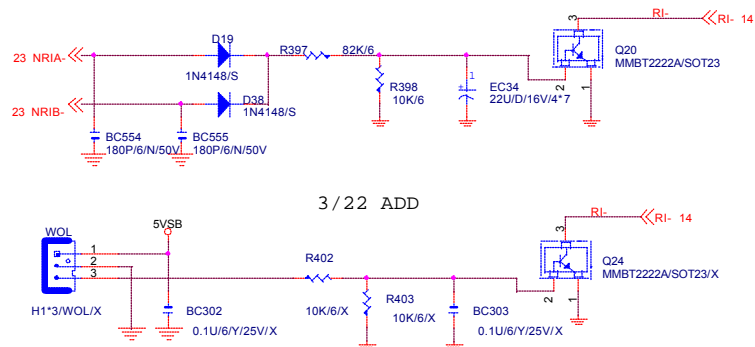


GIGABYTE CORP.			
Title			
COM & IR & LPT PORT & FLOOPY			
Size B	Document Number	GA-8IE	Rev 1.1
Date: Tuesday, May 14, 2002	Sheet	23	of 34



www.kyathuatvithinh.com

GIGABYTE			
Title			
ICH USB+LAN PORT			
Size	Document Number	GA-8IE	Rev
B			1.1
Date:	Tuesday, May 14, 2002	Sheet	24 of 34



3 PIN POWER LED

PWR_LED	MPD+	MPD+
	MPD-	MPD-
	MPD-	MPD-
P_LED_1X3		

States for green LED

LED States	ACPI States	GPO28
ON	S1, S3	0
OFF	S0, S5	1

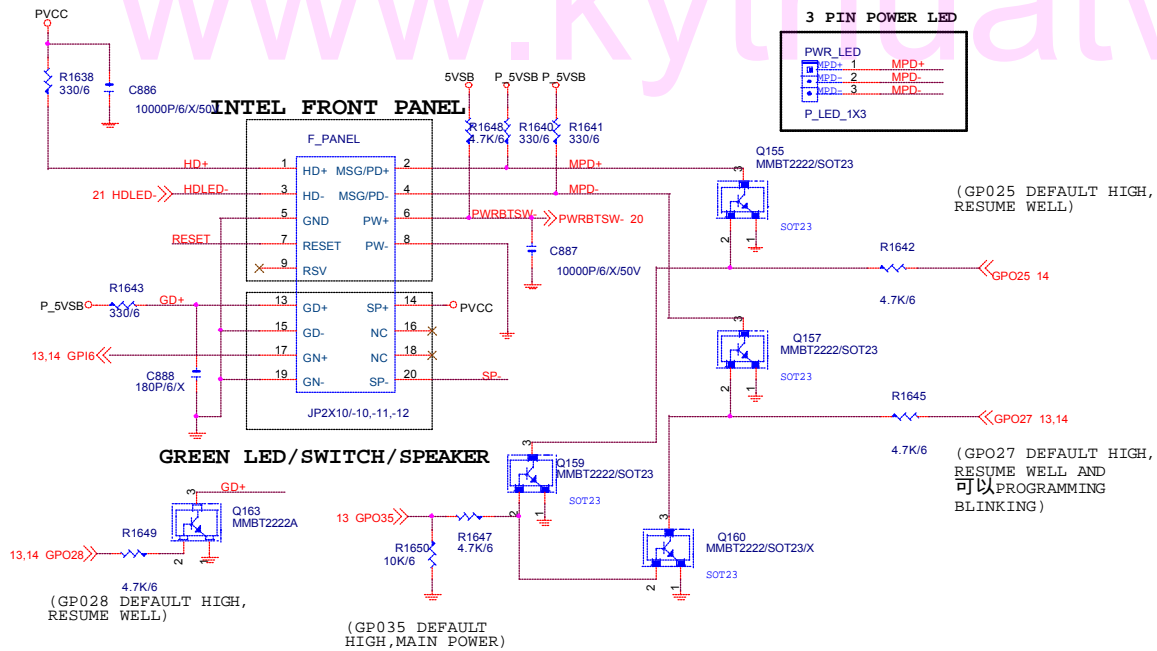
NO1 GPO35 只需在S1 PROGRAMMING LOW

States for a single-color power LED

LED States	ACPI States	GPO25	GPO27	GPO35
OFF	S1, S3, S5	1	1	NO1
Steady Green	S0	0	1	0
Blinking Green	S0(message waiting)	0	B	0
Steady Yellow	S1, S3	1	0	NO1
Blinking Yellow	S1, S3(message waiting)	1	B	NO1

States for a dual-color power LED

LED States	ACPI States	GPO25	GPO27	GPO35
OFF	S5	1	1	X
Steady Green	S0	0	1	0
Blinking Green	S0(message waiting)	0	B	0
Steady Yellow	S1, S3	1	0	NO1
Blinking Yellow	S1, S3(message waiting)	1	B	NO1



(GPO28 DEFAULT HIGH, RESUME WELL)

(GPO35 DEFAULT HIGH, MAIN POWER)

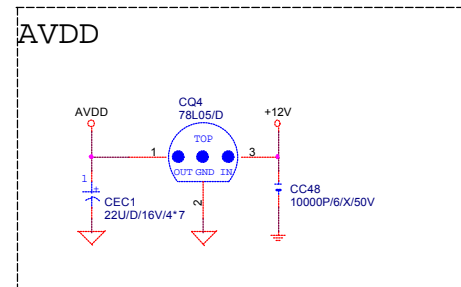
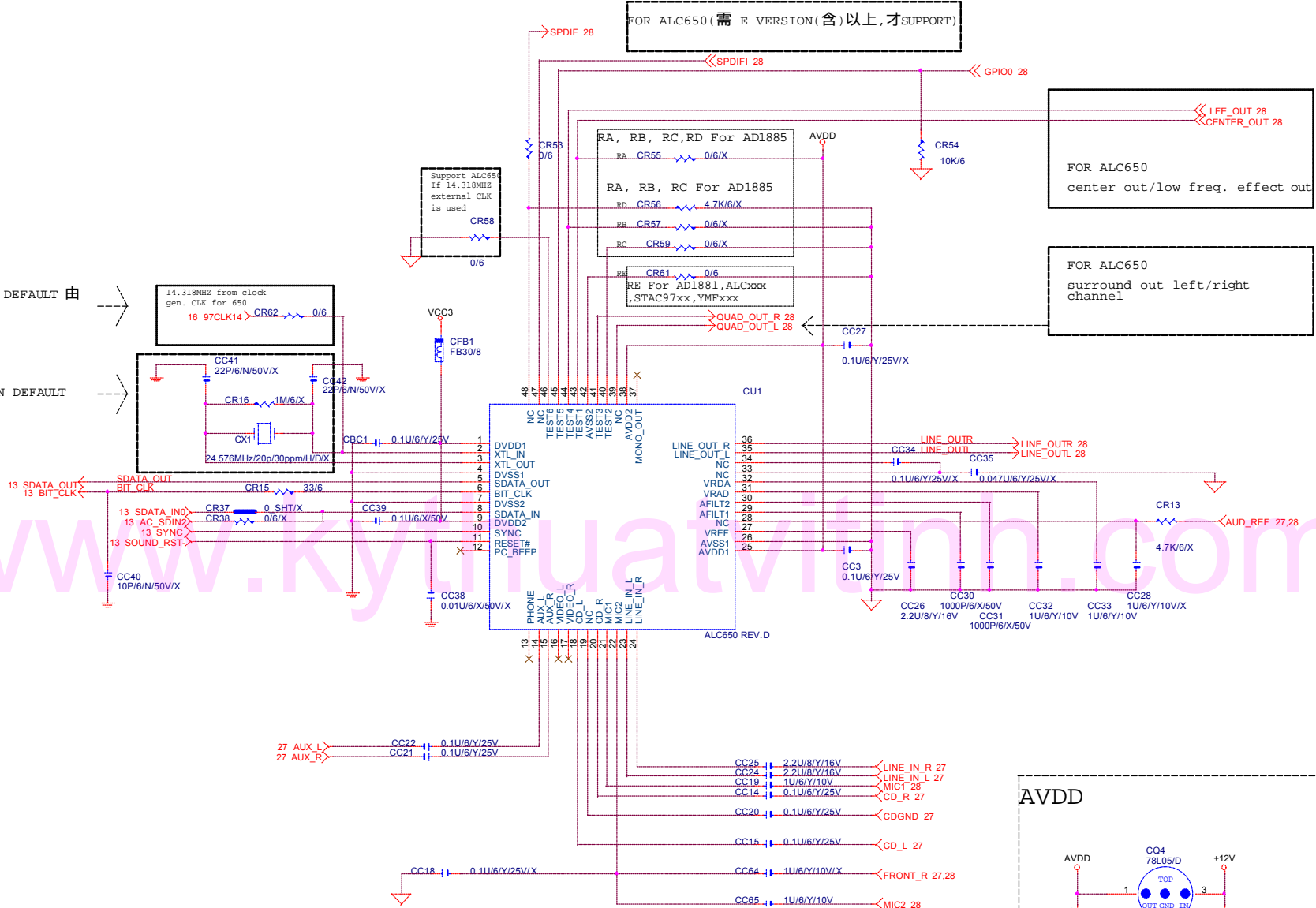
(GPO25 DEFAULT HIGH, RESUME WELL)

(GPO27 DEFAULT HIGH, RESUME WELL AND 可以PROGRAMMING BLINKING)

模組化線路

FOR 650 DESIGN DEFAULT 由
CLOCK GEN來

FOR 650 DESIGN DEFAULT
不上CRYSTAL

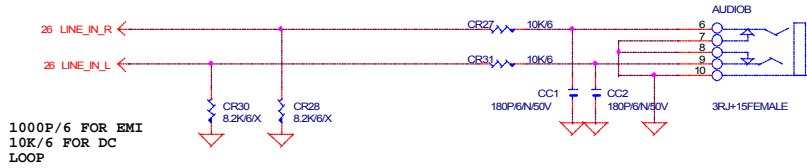


GIGABYTE CORP.

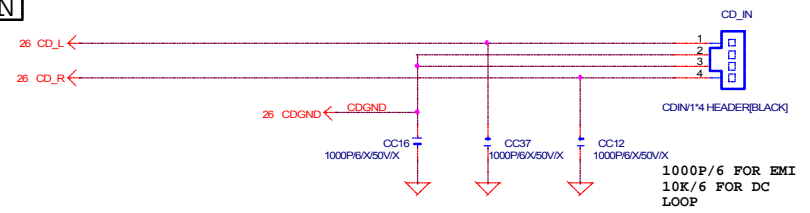
Title		AC97	
Size B	Document Number	GA-8IE	Rev 1.1
Date:	Tuesday, May 14, 2002	Sheet	26 of 34

LINE-IN

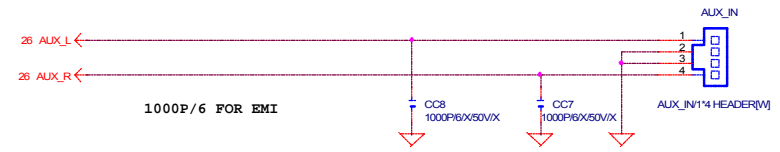
模組化線路



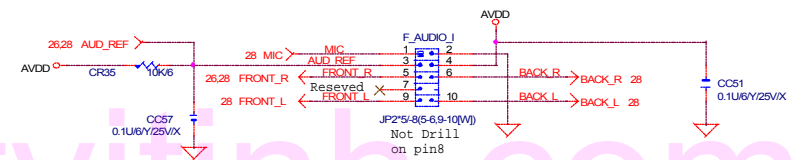
CDIN



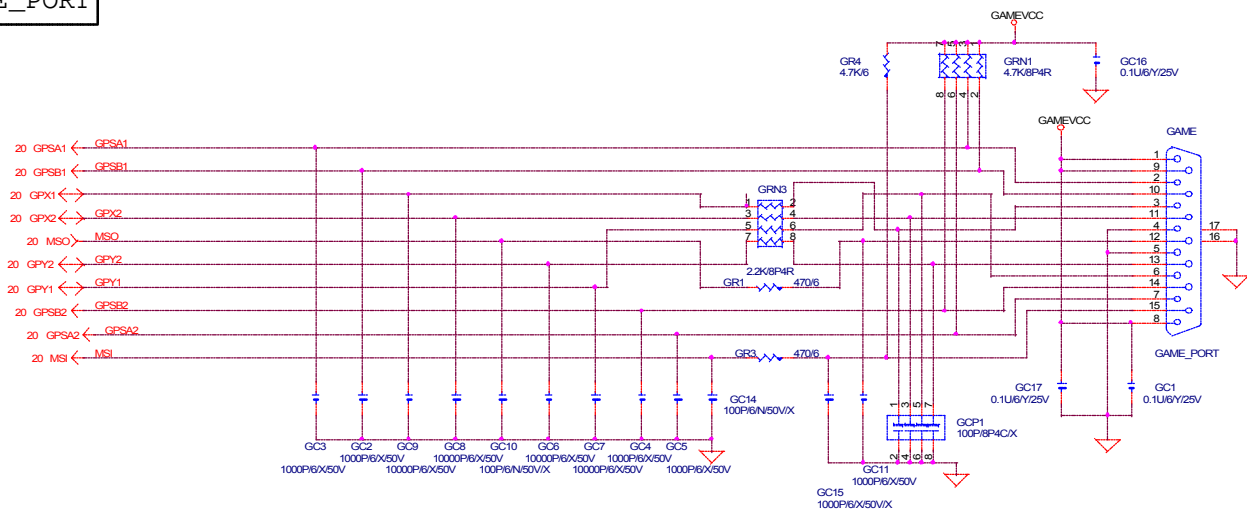
AUX_IN



INTEL FRONT AUDIO



GAME_PORT

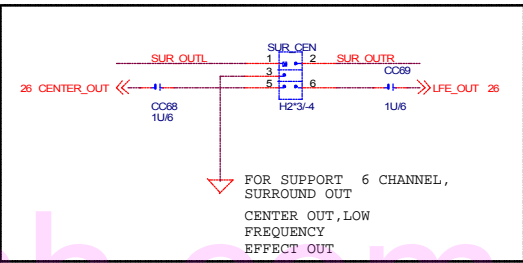
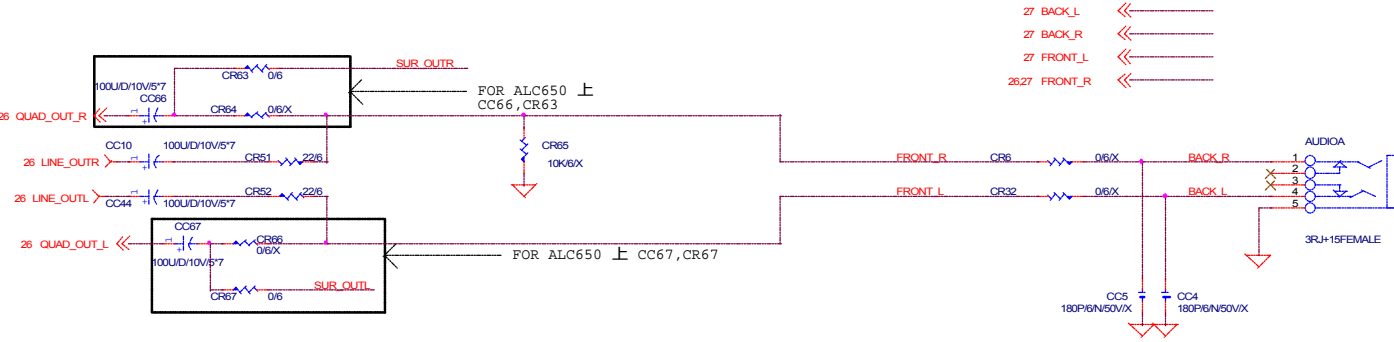


GIGABYTE CORP.			
Title			
PHONE JACK, GAME PORT			
Size	Document Number	Rev	
Custom	GA-8IE	1.1	
Date	Tuesday, May 14, 2002	Sheet	27 of 34

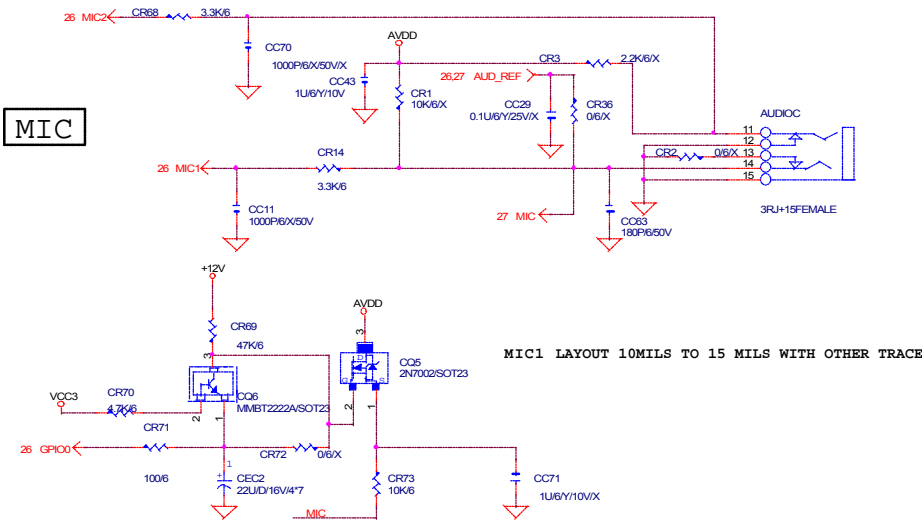
www.kythuatvithinh.com

模組化線路

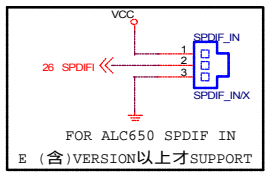
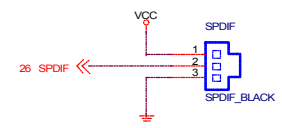
LINE OUT



MIC



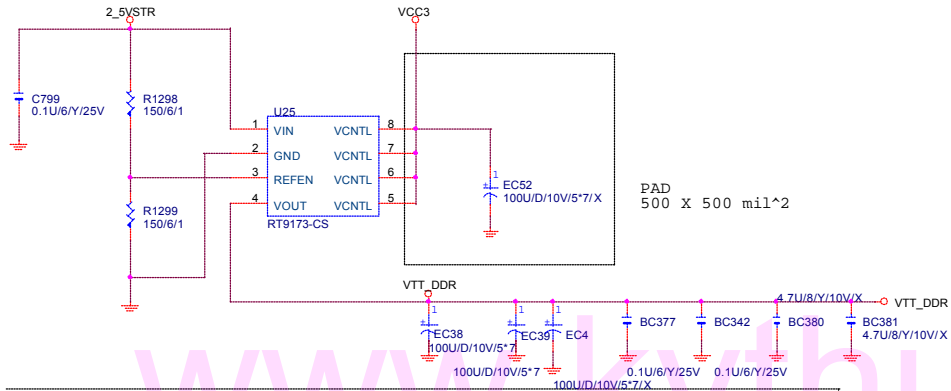
SPDIF



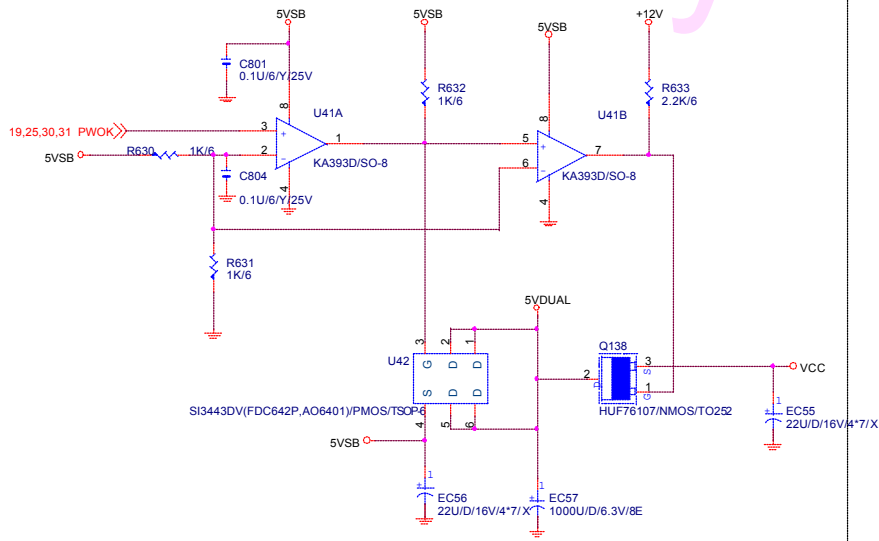
GIGABYTE CORP.			
Title PHONE JACK, GAME PORT			
Size Custom	Document Number GA-8IEX	Rev 1.1	
Date Tuesday, May 14, 2002	Sheet 28	of 34	

www.kythuatchinh.com

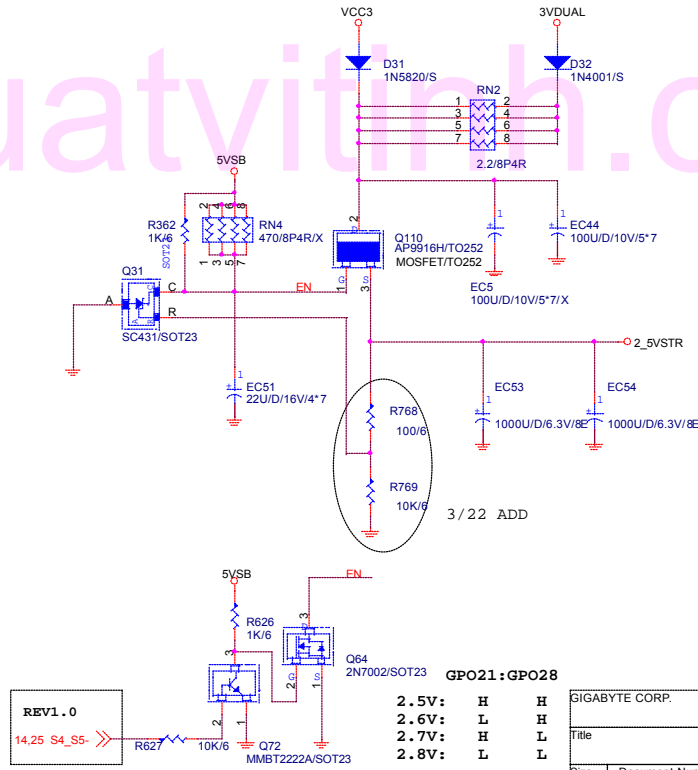
1.25V VTT_DDR LINEAR SOLUTION



PAD
500 x 500 mil²



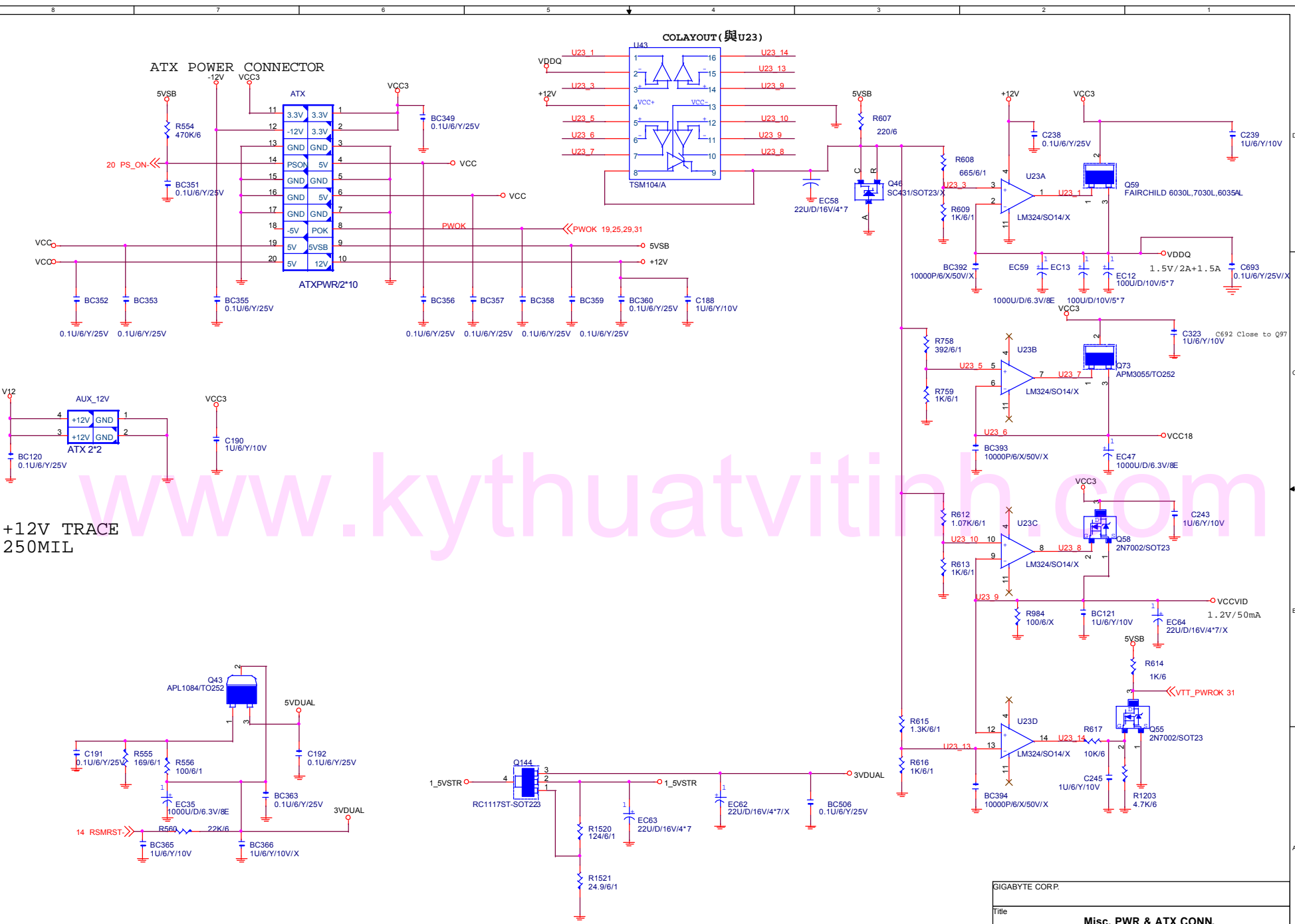
5VDUAL CIRCUIT



REV1.0
14,25 S4_S5->

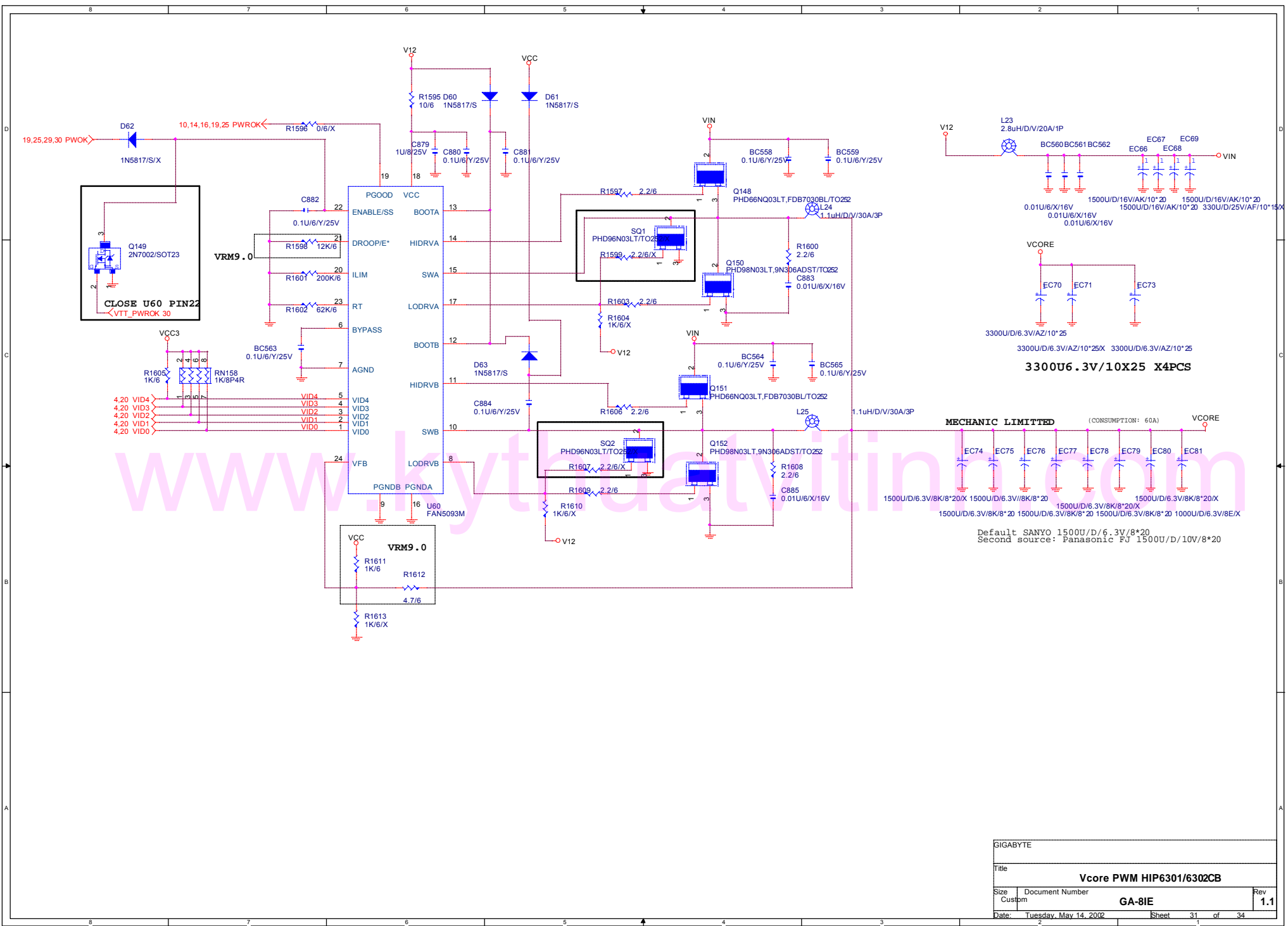
GPO21:GPO28			
2.5V:	H	H	
2.6V:	L	H	
2.7V:	H	L	
2.8V:	L	L	

GIGABYTE CORP.		
Title		
DDR POWER		
Size B	Document Number	Rev 1.1
GA-8IE		
Date:	Tuesday, May 14, 2002	Sheet 29 of 34



+12V TRACE
250MIL

GIGABYTE CORP.			
Title			
Misc. PWR & ATX CONN.			
Size B	Document Number	GA-8IE	Rev
Date: Tuesday, May 14, 2002	Sheet	30	of 34
		1	1.1



GIGABYTE			
Title			
Vcore PWM HIP6301/6302CB			
Size	Document Number	GA-8IE	Rev
Custom			1.1
Date:	Tuesday, May 14, 2002	Sheet	31 of 34

GIGABYTE GA-8IE GPIO LIST

Revision 1.1

SHEET

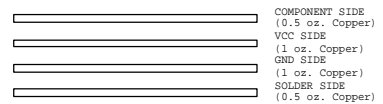
TITLE

GPI		
GPI0/REQA-	NA	PULL 8.2K TO VCC3
GPI1/REQ5-		PULL 2.7K TO VCC
GPI2/PIRQE-	ID	PULL 8.2K TO VCC3 (default)
GPI3/PIRQF-		PULL 8.2K TO VCC3
GPI4/PIRQG-		PULL 8.2K TO VCC3
GPI5/PIRQH-	ID	PULL 8.2K TO VCC3 (default)
GPI6		PULL 8.2K TO VCC3 (GREEN BUTTON)
GPI7		PULL DOWN 10K TO GND
GPI8	ID	PULL 8.2K TO VCC3 (default)
GPI9	NA	NOT IMPLEMENTED
GPI10	NA	NOT IMPLEMENTED
GPI11		PULL 4.7K TO 3VDUAL (SMBALERT)
GPI12/LPCPME-		PULL 8.2K TO 3VDUAL (PME-)
GPI13		NC
GPI14	NA	NOT IMPLEMENTED
GPI15	NA	NOT IMPLEMENTED

SHEET

TITLE

GPO		
GPO16	NA	PULL 8.2K TO VCC3 (CAN'T PULL DOWN) 因為會 decode bios address 不正確:FF
GPO17		PULL 8.2K TO VCC3 (GNT5-)
GPO18	NA	PULL 8.2K TO VCC3 此OUTPUT 會 TOGGLE. (在開機時) BIOS POST OK
GPO19		PULL 8.2K TO VCC3
GPO20		PULL 8.2K TO VCC3
GPO21		PULL 8.2K TO VCC3 (TOP BLOCK)
GPO22		PULL 8.2K TO VCC3
GPO23		PULL 8.2K TO VCC3
GPO24		PULL 4.7K TO 3VDUAL
GPO25		PULL 4.7K TO 3VDUAL (POWER LED)
GPO26		NOT IMPLEMENTED
GPO27		PULL 8.2K TO 3VDUAL (POWER LED)
GPO28		PULL 8.2K TO 3VDUAL
GPO32		PULL 8.2K TO 3VDUAL (BIOS WRITE PROTECT)
GPO35		PULL DOWN 10K TO GND (POWER LED)

	
GIGABYTE	
Title GPIO LIST	
Size Custom	Document Number GA-8IE
Date: Tuesday, May 14, 2002	Rev 1.1
Sheet 33 of 34	

