

GIGABYTE GA-6OXT Reference Schematics

Revision : 1.0

TITLE	SHEET
COVER SHEET	1
INTEL PIII SOCKET-370	2,3,4
GMCH (INTEL 82815 EP)	5,6,7
SDRAM SOCKET (DIMM1,DIMM2,DIMM3)	8,9,10
AGP SLOT	11
ICH2 (INTEL 82801BA)	12,13,14
CLOCK SYNTHESIZER	15
PCI SLOTS (PCI1,PCI2,PCI3,PCI4,PCI5)	16,17,18
FWH (SST 49SL002A)	18
IDE CONNECTORS (IDE1,IDE2)	19
BUZZER & FRONT PANEL & WOL & STR LED	20
CODEC (REALREK 201A)	21
AUDIO PHONE JACK & FRONT AUDIO	22
CNR.SOLT	23
LPC (IT8712/DX) & SCR	24
COM & LPT PORTS & FLOPPY	25
H/W MONITOR & FAN	26
PS2 CONNECT & FRONT SMBUS & IR/CIR & USB	27
ATX POWER & STR LDO & 5VDUAL & VCC18	28
VCC CORE DC-DC CONVERTER	29
HISTORY	30

JUMPER SETTING

CLR_CMOS	
1-2	CLEAR CMOS
2-3	NORMAL

BIOS_WP

1-2	WRITE PROTECT
2-3	NORMAL

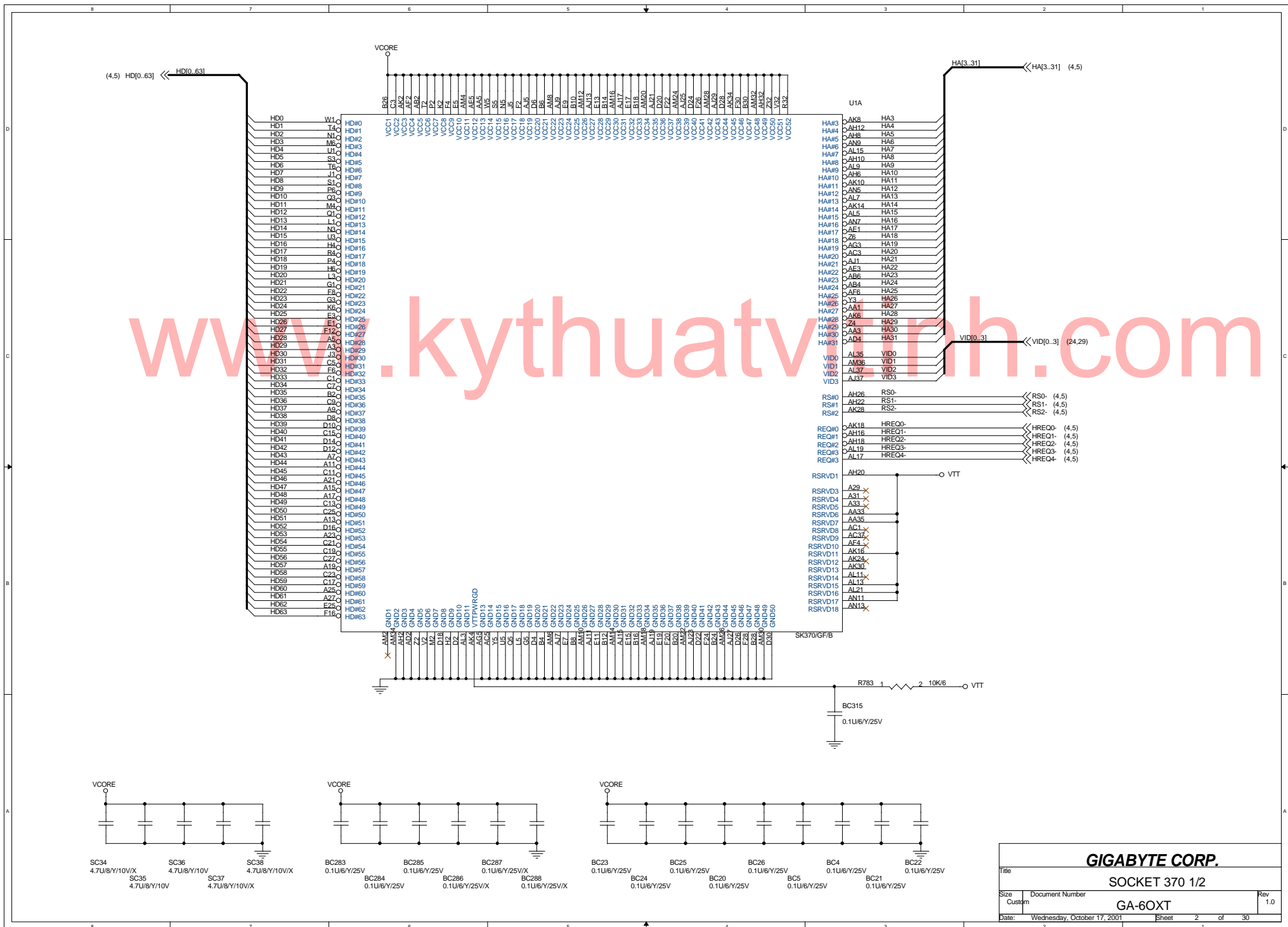
CODEC_EN

1-2	ENABLE
2-3	DISABLE

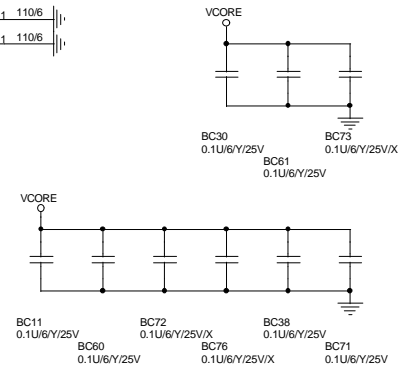
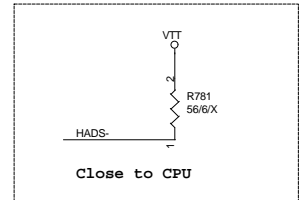
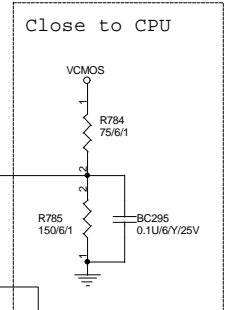
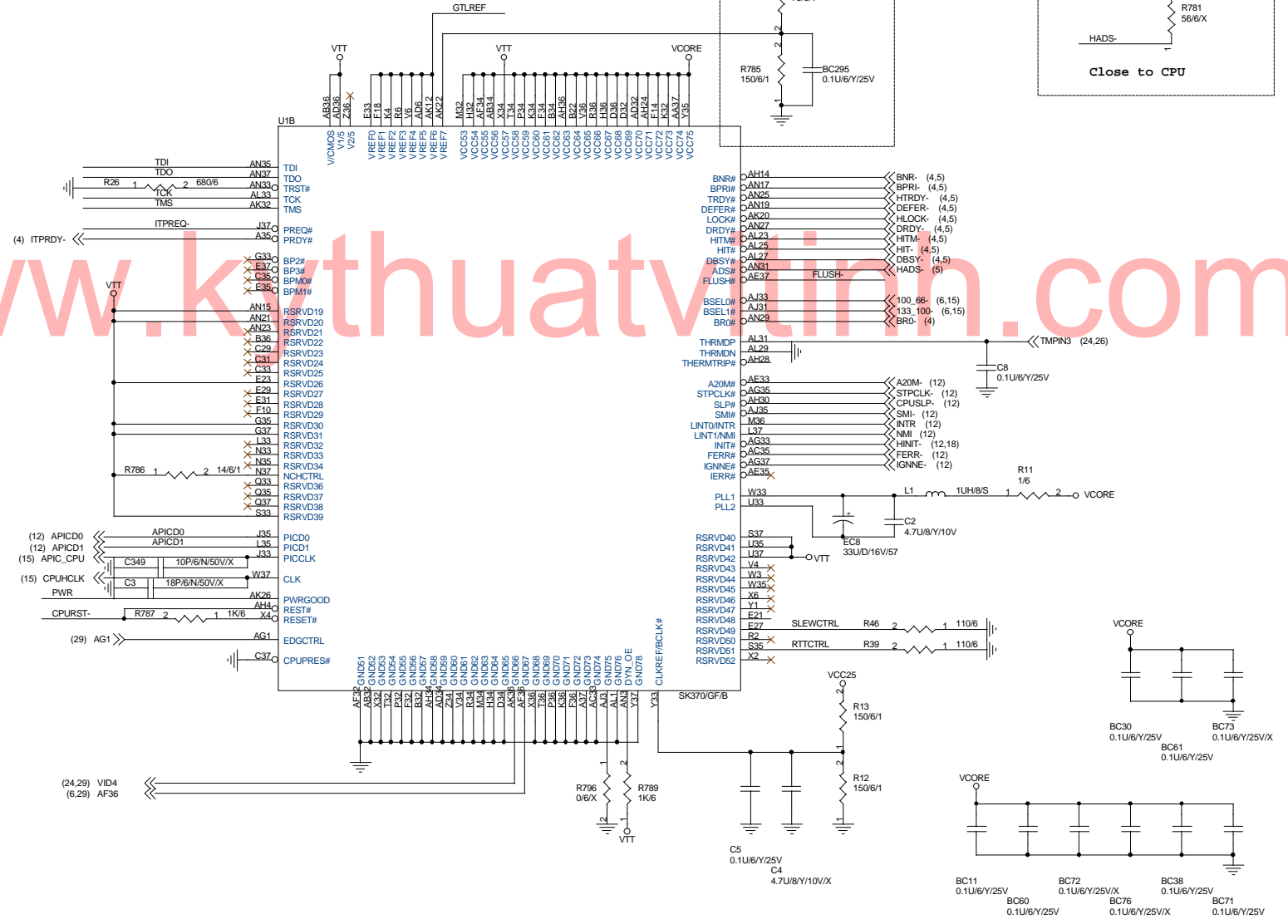
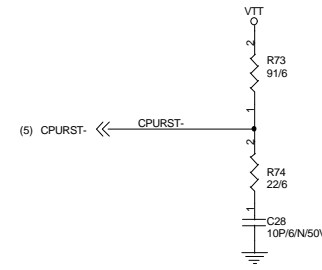
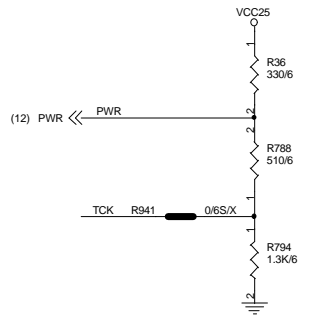
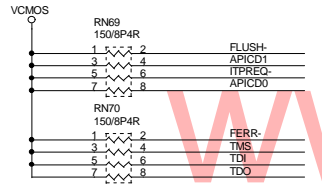
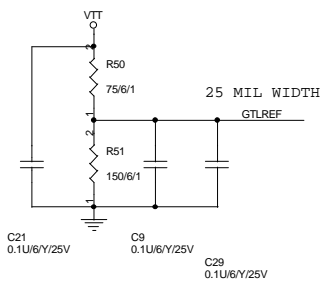
ICH2 GPIO	FUNCTION	PULL UP/DOWN
** GPIO/REQA-	PRI_DWN-	PULL UP 4.7K TO VCC3
GPIO/REQ5-	REQ5-	PULL UP 2.7K TO VCC
GPIO2/PIRQE-	NOT USED	PULL UP 8.2K TO VCC3
GPIO3/PIRQF-	PIRQF-	PULL UP 8.2K TO VCC3
GPIO4/PIRQG-	PIRQG-	PULL UP 2.7K TO VCC
GPIO5/PIRQH-	NOT USED	PULL UP 8.2K TO VCC3
** GPIO6	GREEN BUTTON	PULL UP 8.2K TO 3VDUAL
** GPIO7	AGP/DIMM OVER VOLTAGE	PULL UP 8.2K TO VCC3
** GPIO8	REV. ID	PULL UP 4.7K TO 3VDUAL
** GPIO11	REV. ID	PULL UP 4.7K TO 3VDUAL
** GPIO12	LPCPME-	PULL UP 8.2K TO 3VDUAL
** GPIO13	SMART CARD READER	PULL UP 4.7K TO 3VDUAL
GPO16/GNTA-	NOT USED	PULL 8.2K TO VCC3(CAN'T PULL DOWN).Because BIOS Address Decode Inconect : FF
GPO17/GNT5-	GNT5-	PULL 8.2K TO VCC3
GPO18	NOT USED	
GPO19	NOT USED	
** GPO20	AGP OVER VOLTAGE 1.6V	
** GPO21	AGP OVER VOLTAGE 1.7V	
GPO22	NOT USED	PULL 8.2K TO VCC3
GPO23	NOT USED	
** GPIO24	REV. ID	PULL 4.7K TO 3VDUAL
** GPIO25	BIOS WRITE PROTECT	
** GPIO27	DIMM OVER VOLTAGE 3.5V	
** GPIO28	DIMM OVER VOLTAGE 3.4V	

LPC1/O GPIO	FUNCTION	PULL UP/DOWN
** GP50/CLKRUN-	STR FUNCTION	PULL DOWN 4.7K TO GND

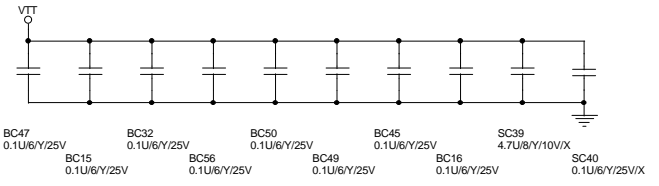
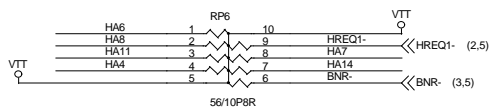
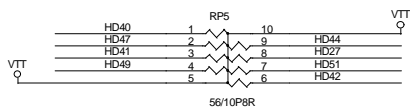
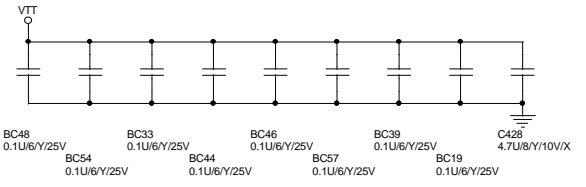
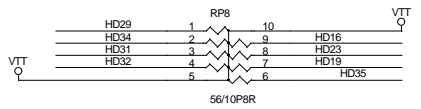
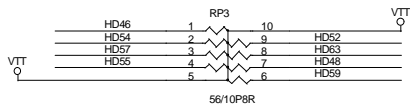
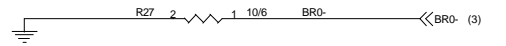
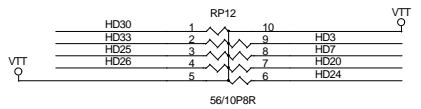
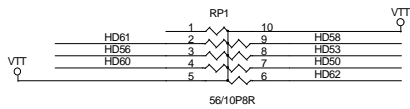
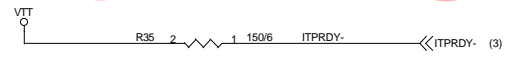
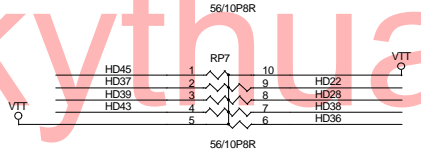
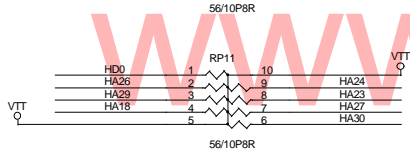
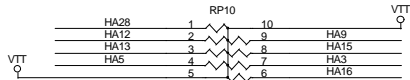
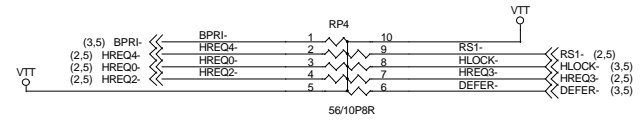
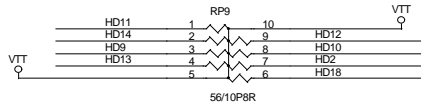
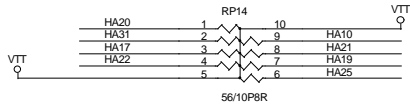
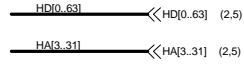
GIGABYTE CORP.			
Title	COVER		
Size	Document Number	Rev	1.0
Custom	GA-6OXT		
Date:	Wednesday, October 17, 2001	Sheet	1 of 30



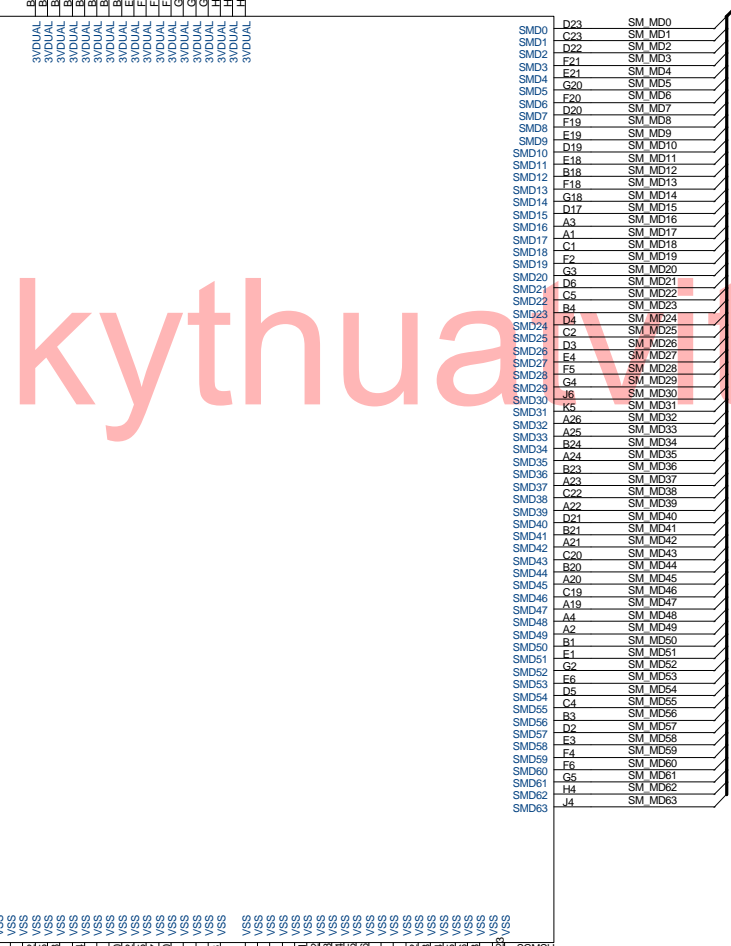
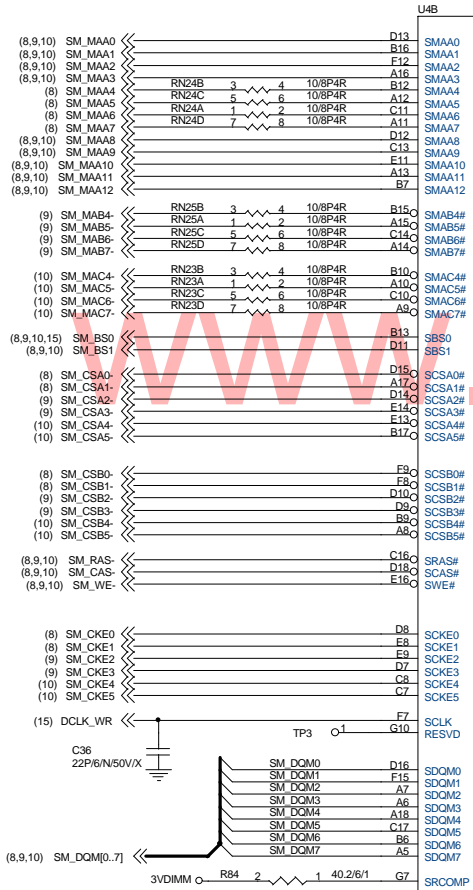
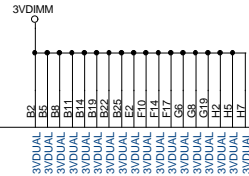
GIGABYTE CORP.		
Title SOCKET 370 1/2		
Size Custom	Document Number GA-60XT	Rev 1.0
Date: Wednesday, October 17, 2001	Sheet 2	of 30



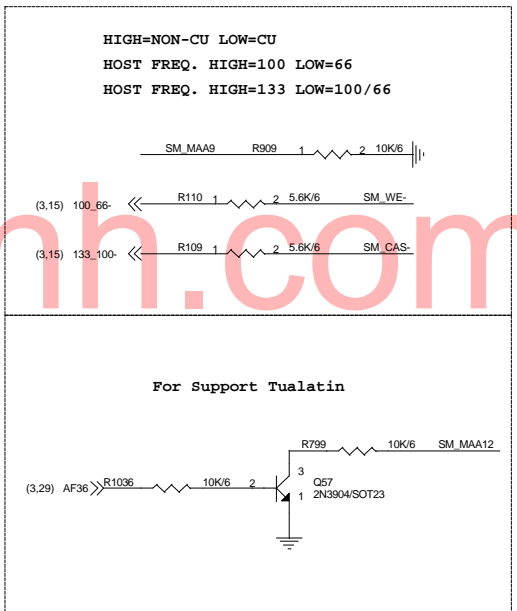
GIGABYTE CORP.			
Title SOCKET 370 2/2			
Size Custom	Document Number GA-60XT	Rev 1.0	
Date: Wednesday, October 17, 2001	Sheet 3	of 30	



GIGABYTE CORP.		
Title 370 TERMINATOR		
Size Custom	Document Number GA-6OXT	Rev 1.0
Date: Wednesday, October 17, 2001	Sheet 4	of 30

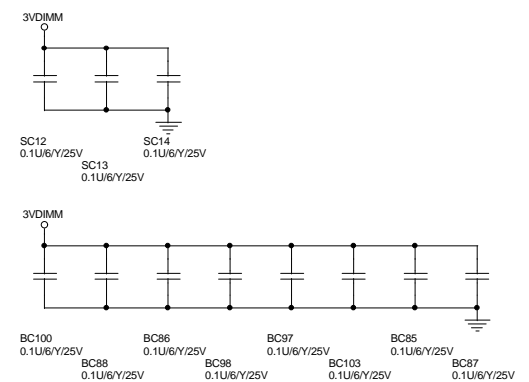


SM MD[0..63] << SM_MD[0..63] (8.9.10)



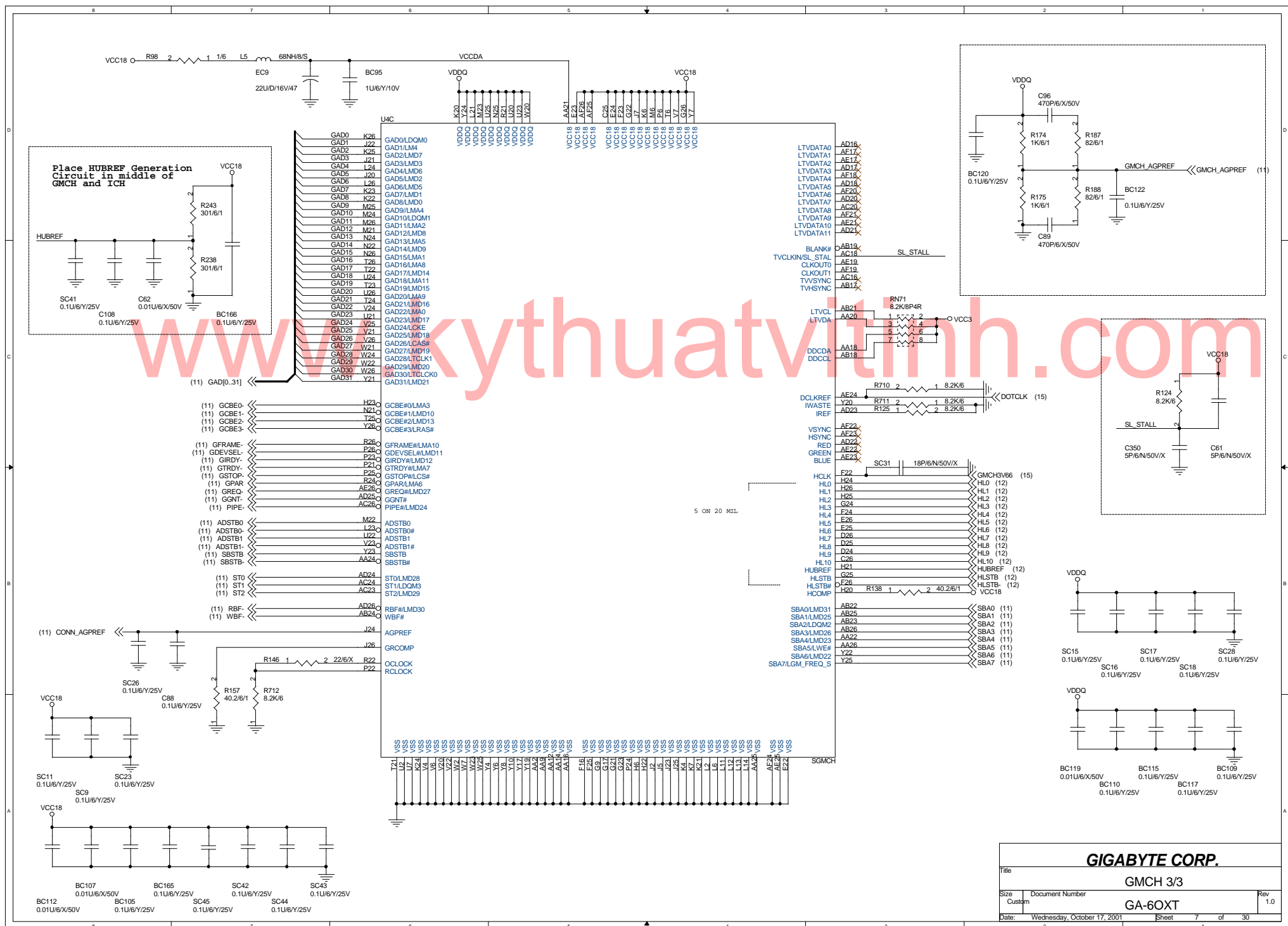
HIGH=NON-CU LOW=CU
 HOST FREQ. HIGH=100 LOW=66
 HOST FREQ. HIGH=133 LOW=100/66

For Support Tualatin



GIGABYTE CORP.		
Title GMCH 2/3		
Size Custom	Document Number GA-60XT	Rev 1.0
Date Wednesday, October 17, 2001	Sheet 6	of 30

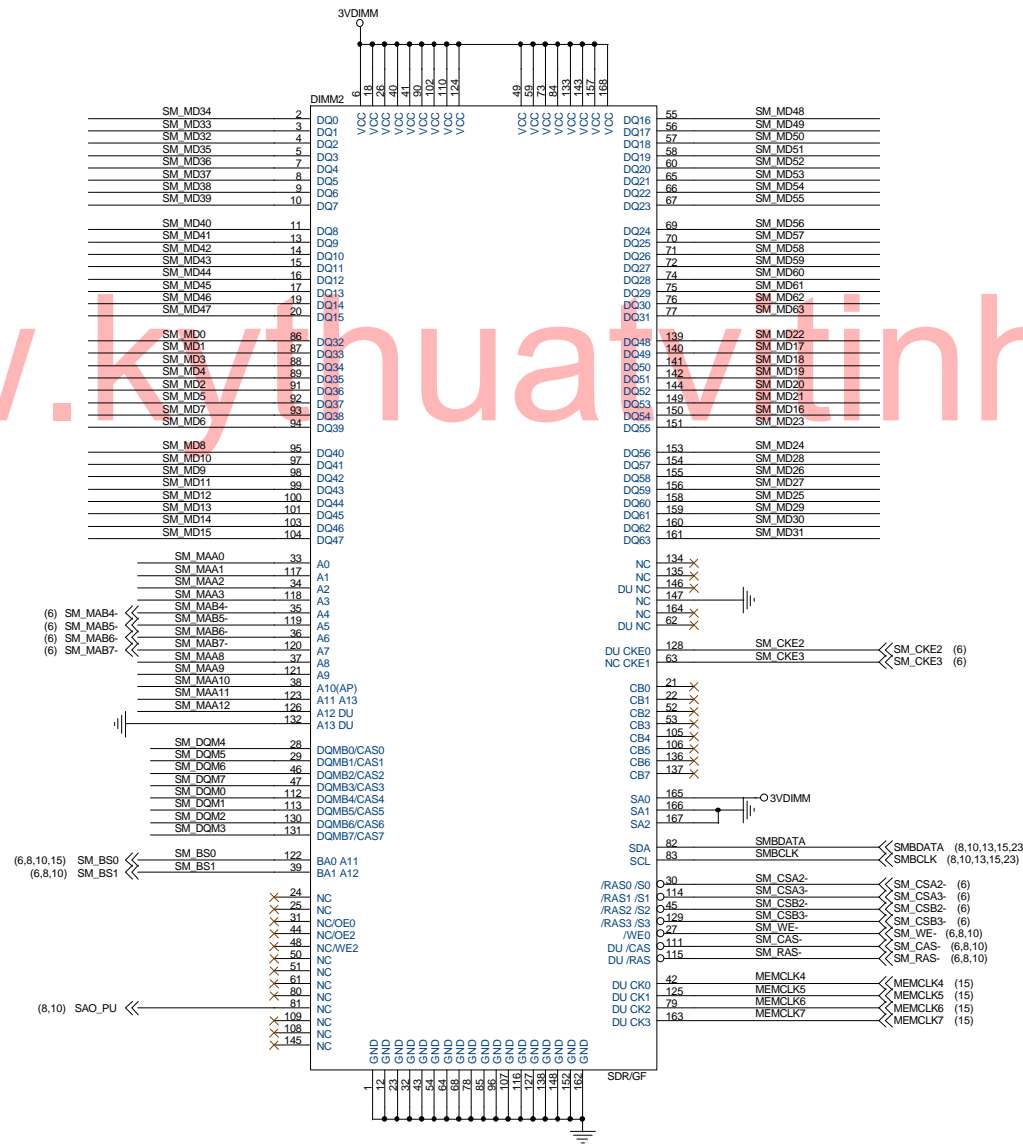
www.kythuaavietinh.com



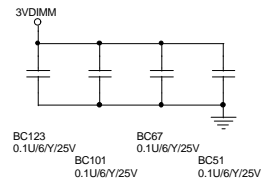
www.kythuathinh.com

GIGABYTE CORP.			
Title GMCH 3/3			
Size Custom	Document Number GA-60XT	Rev 1.0	
Date Wednesday, October 17, 2001	Sheet 7	of 30	

(6,8,10) SM_MD[0..63] << SM_MD[0..63]
 (6,8,10) SM_MAA[0..12] << SM_MAA[0..12]
 (6,8,10) SM_DQM[0..7] << SM_DQM[0..7]

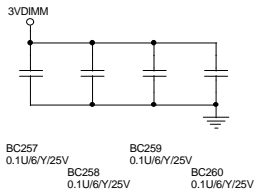
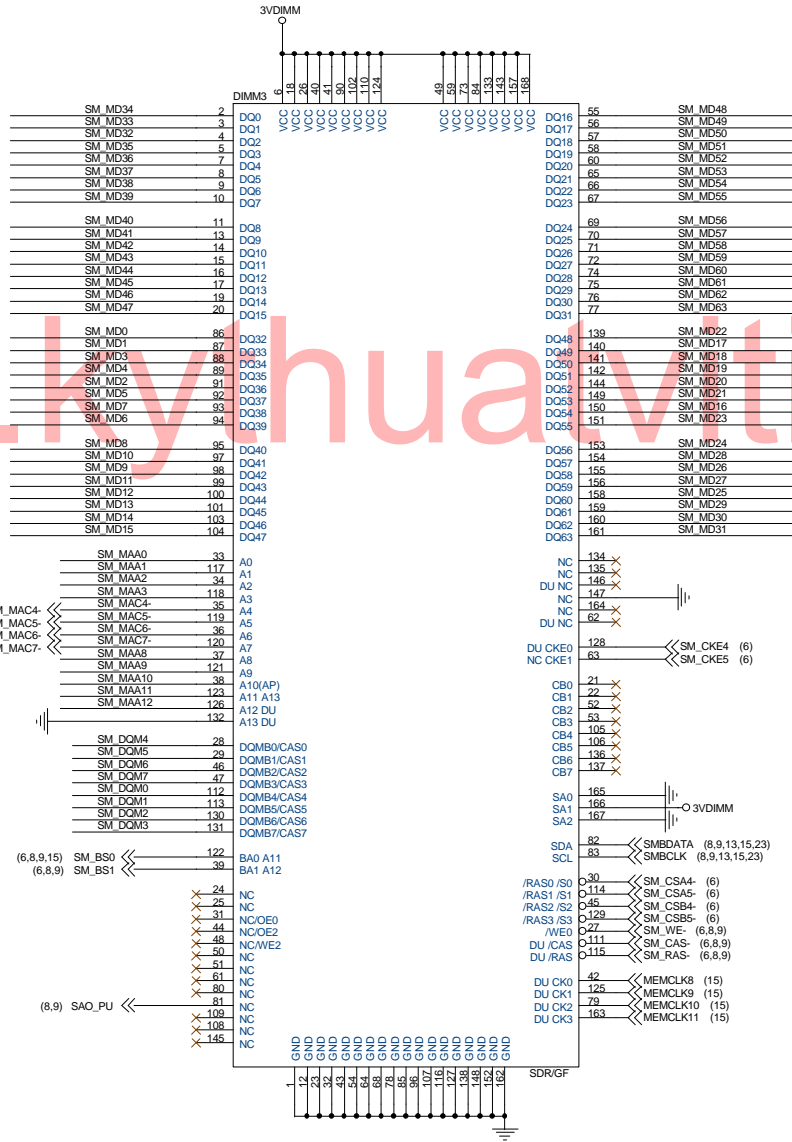


www.kyphuatv tinh.com



GIGABYTE CORP.		
Title DIMM2		
Size Custom	Document Number GA-6OXT	Rev 1.0
Date: Wednesday, October 17, 2001	Sheet 9	of 30

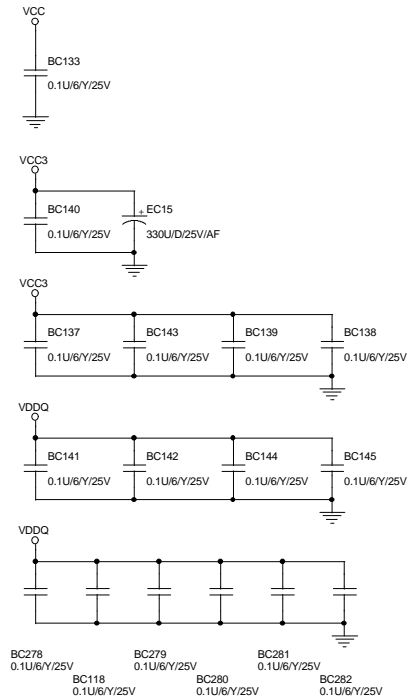
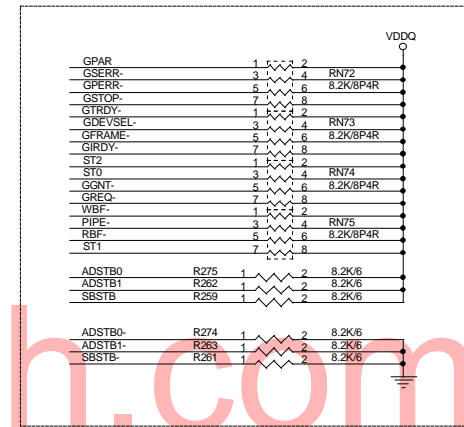
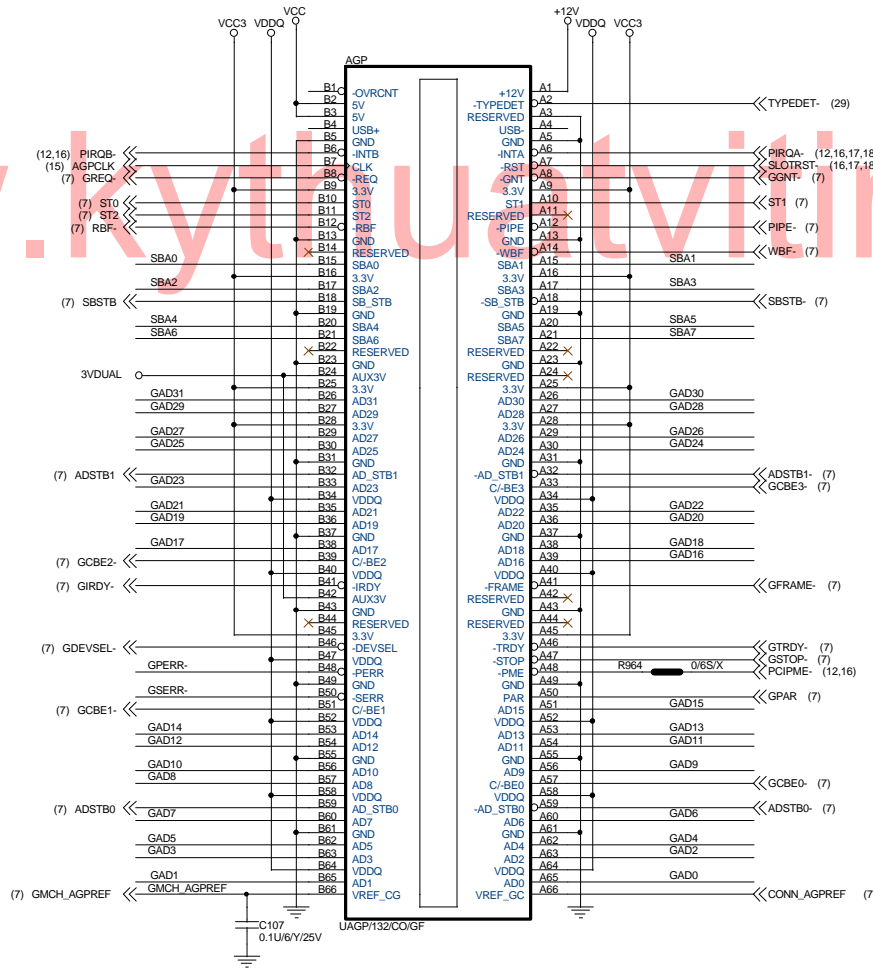
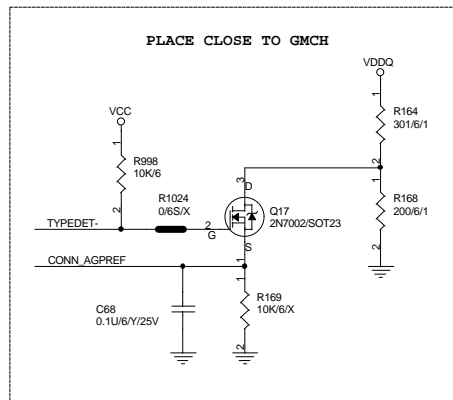
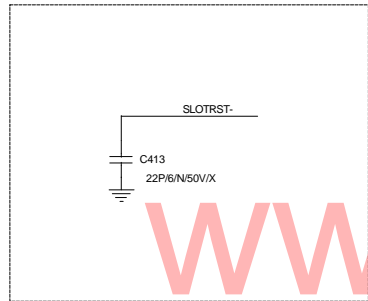
(6,8,9) SM_MD[0..63] << SM_MD[0..63]
 (6,8,9) SM_MAA[0..12] << SM_MAA[0..12]
 (6,8,9) SM_DQM[0..7] << SM_DQM[0..7]



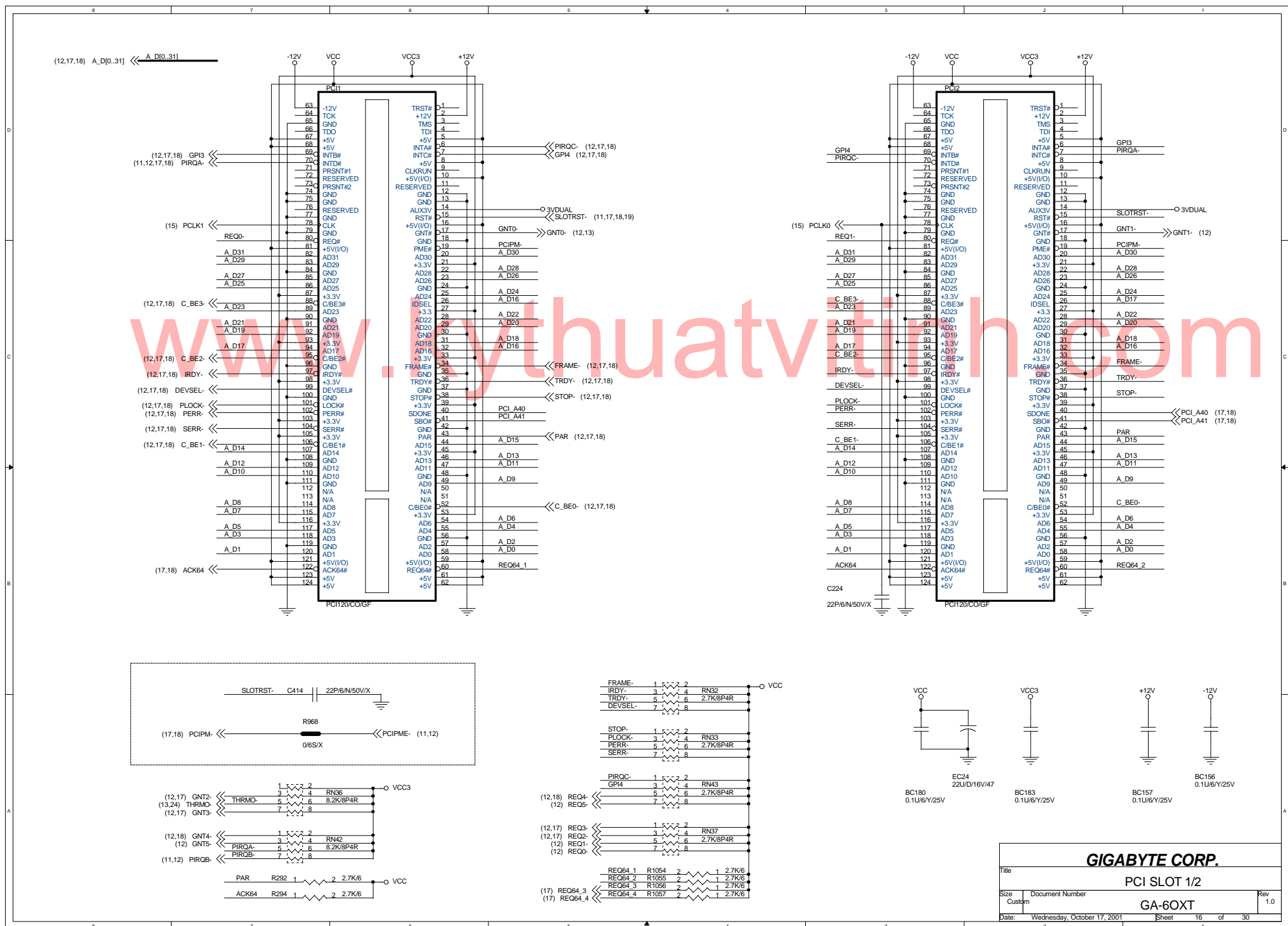
www.kyhuavietinh.com

GIGABYTE CORP.		
Title DIMM3		
Size Custom	Document Number GA-6OXT	Rev 1.0
Date: Wednesday, October 17, 2001	Sheet 10	of 30

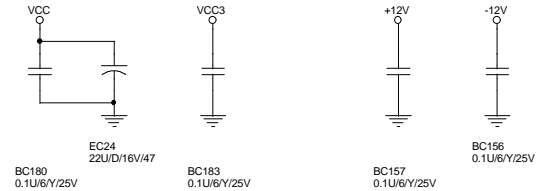
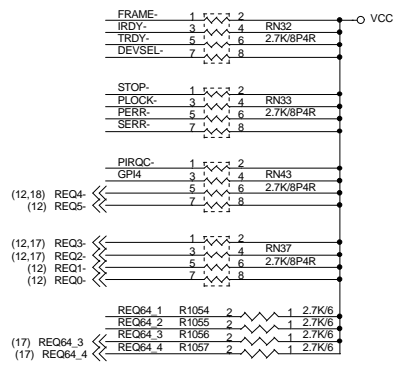
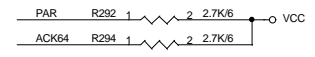
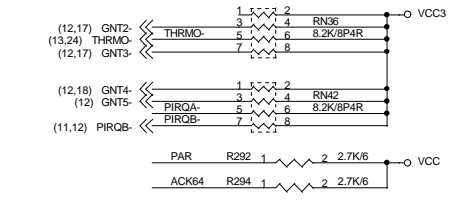
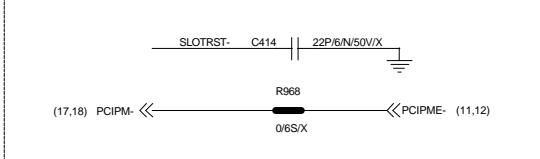
(7) SBA[0..7] << SBA[0..7]
 (7) ST[0..2] << ST[0..2]
 (7) GAD[0..31] << GAD[0..31]



GIGABYTE CORP.		
Title AGP SLOT		
Size Custom	Document Number GA-60XT	Rev 1.0
Date: Wednesday, October 17, 2001	Sheet 11	of 30

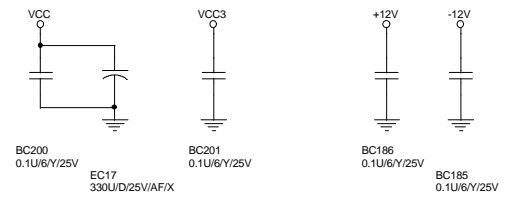
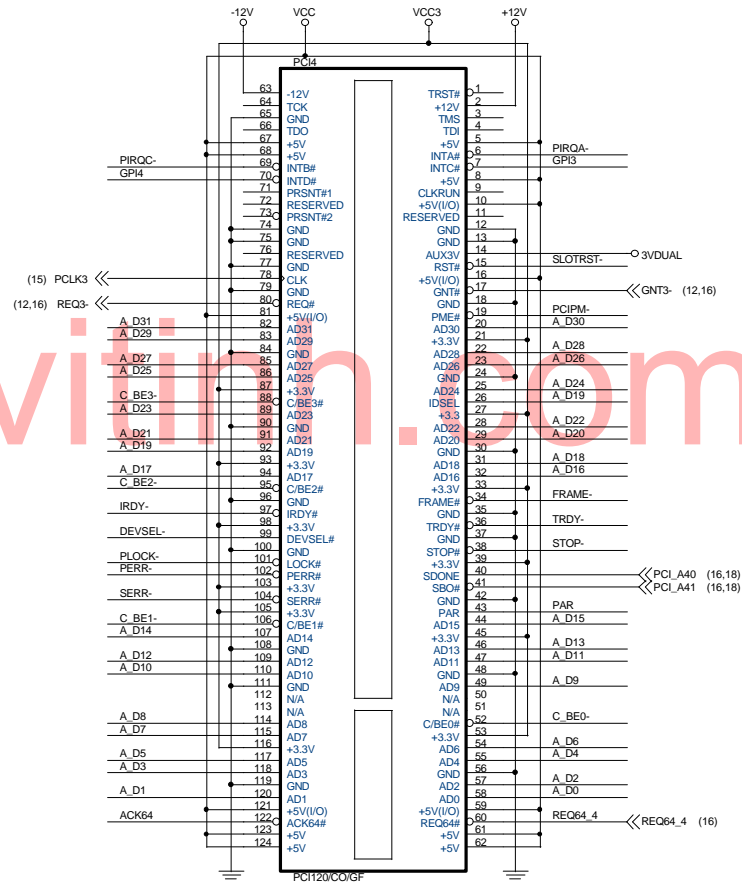
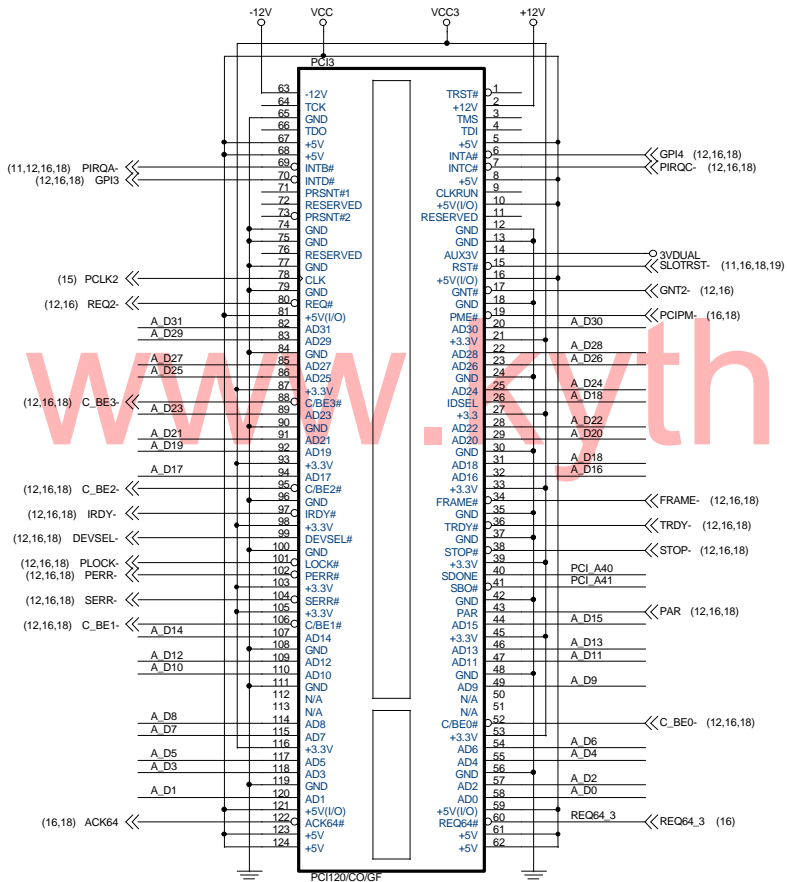


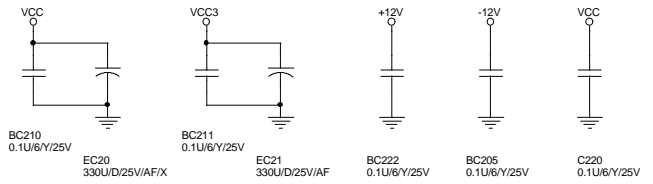
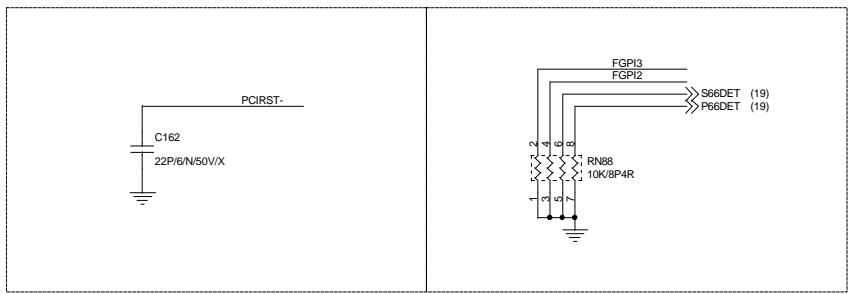
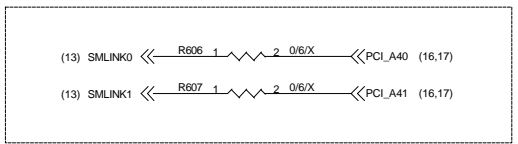
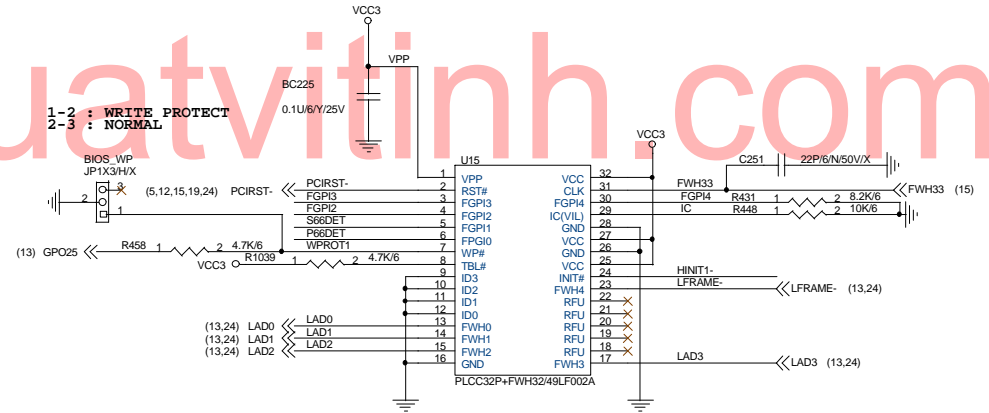
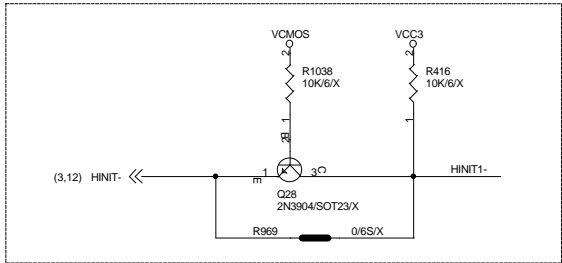
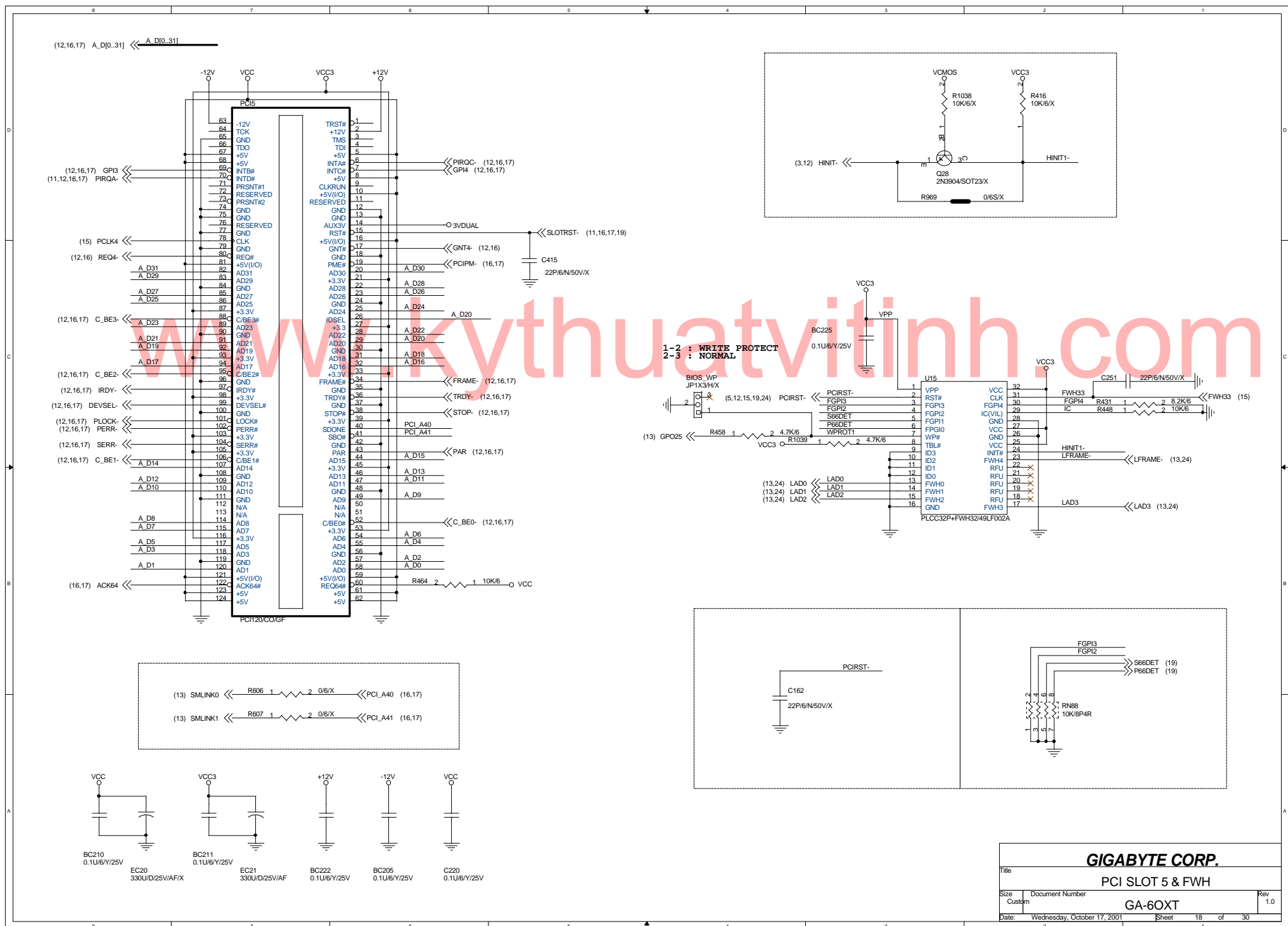
www.thuatv.com



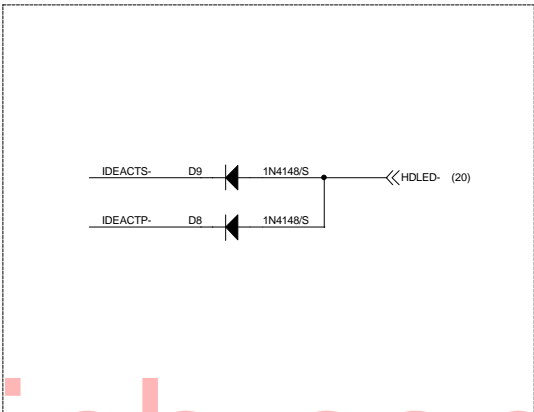
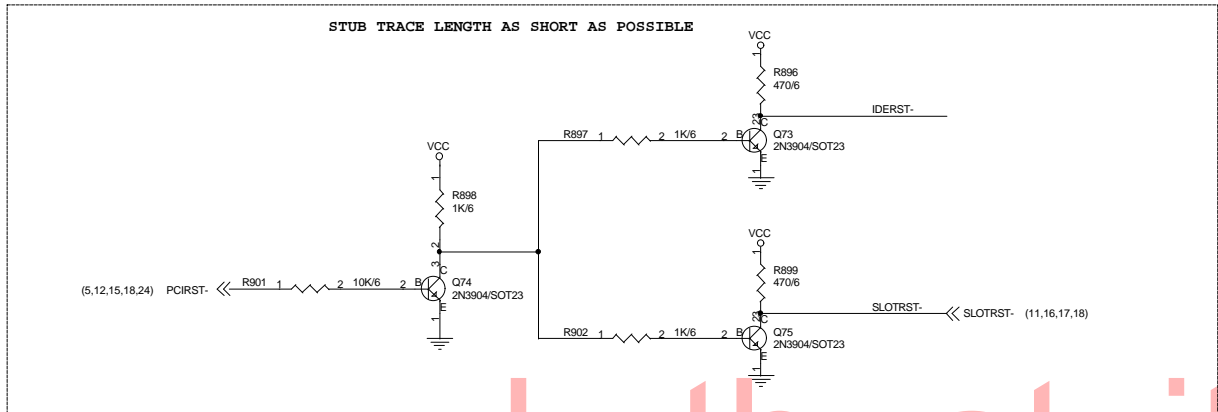
GIGABYTE CORP.		
Title PCI SLOT 1/2		
Size Custom	Document Number GA-60XT	Rev 1.0
Date: Wednesday, October 17, 2001	Sheet 16	of 30

(12,16,18) A_D[0..31] << A_D[0..31]



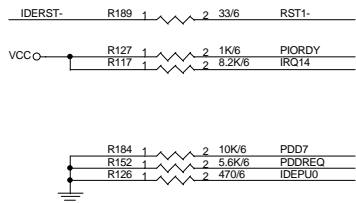
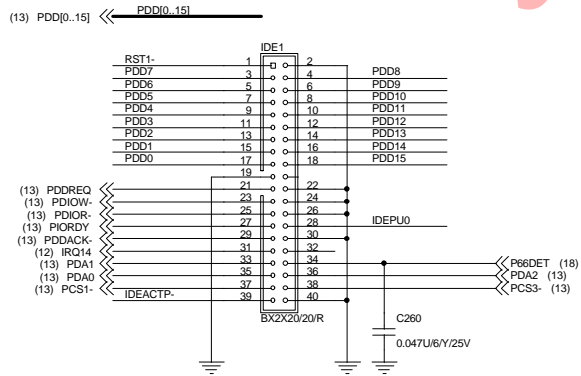


GIGABYTE CORP.		
Title PCI SLOT 5 & FWH		
Size Custom	Document Number GA-60XT	Rev 1.0
Date: Wednesday, October 17, 2001	Sheet 18 of 30	

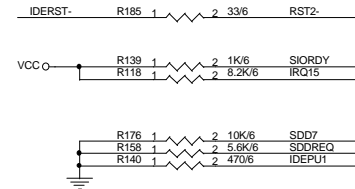
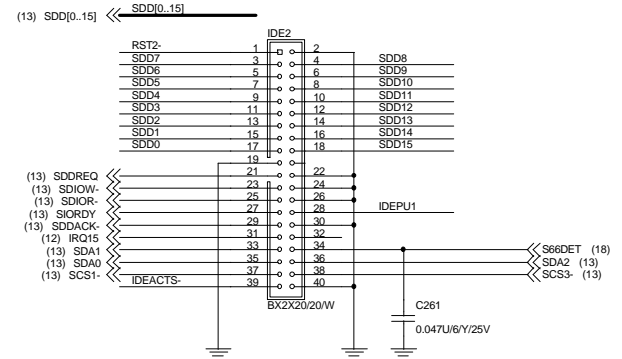


www.kythuatvithinh.com

PRIMARY IDE CONNECTOR



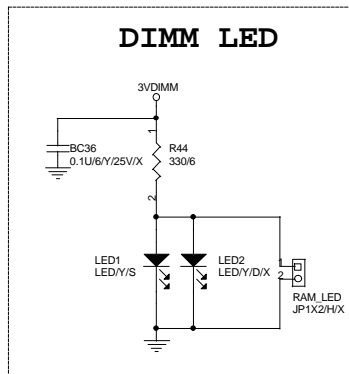
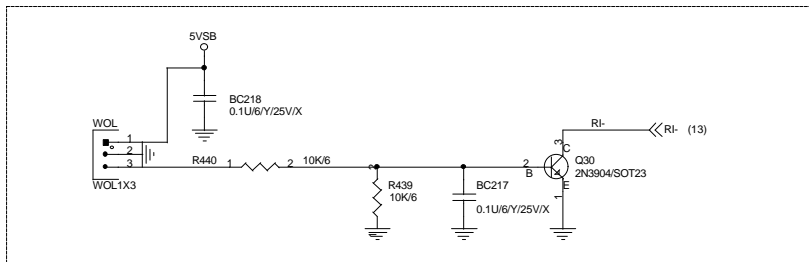
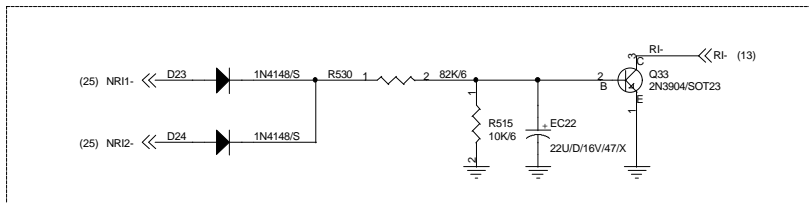
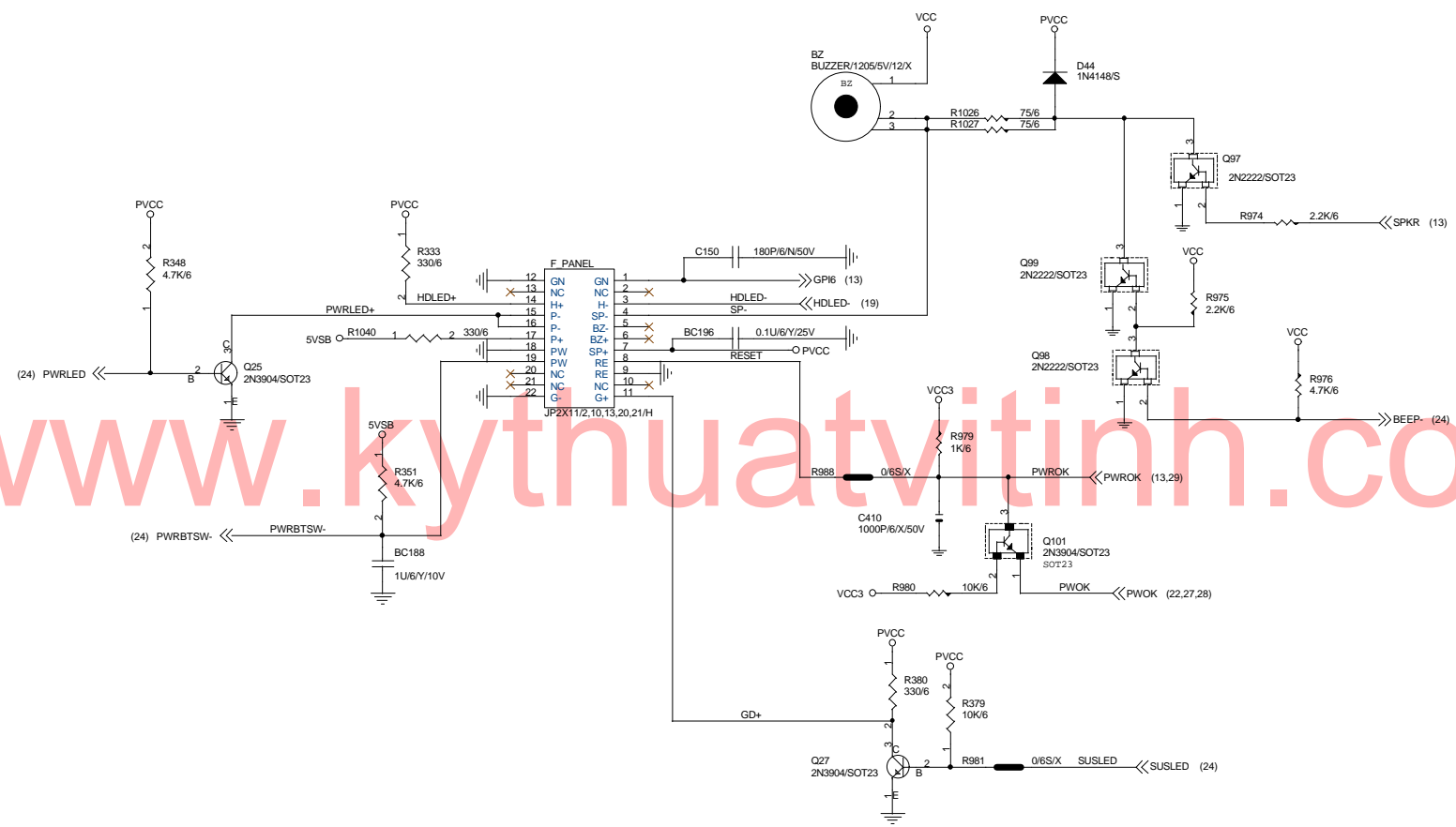
SECONDARY IDE CONNECTOR



GIGABYTE CORP.

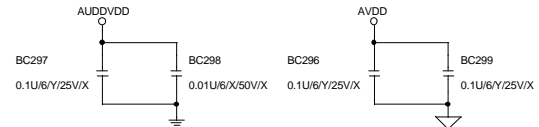
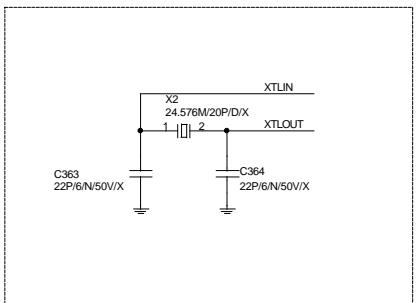
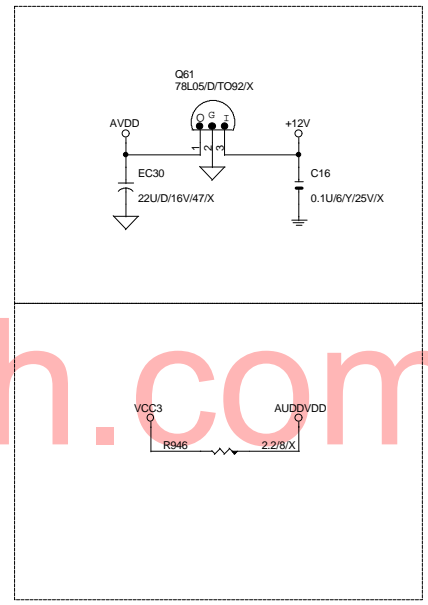
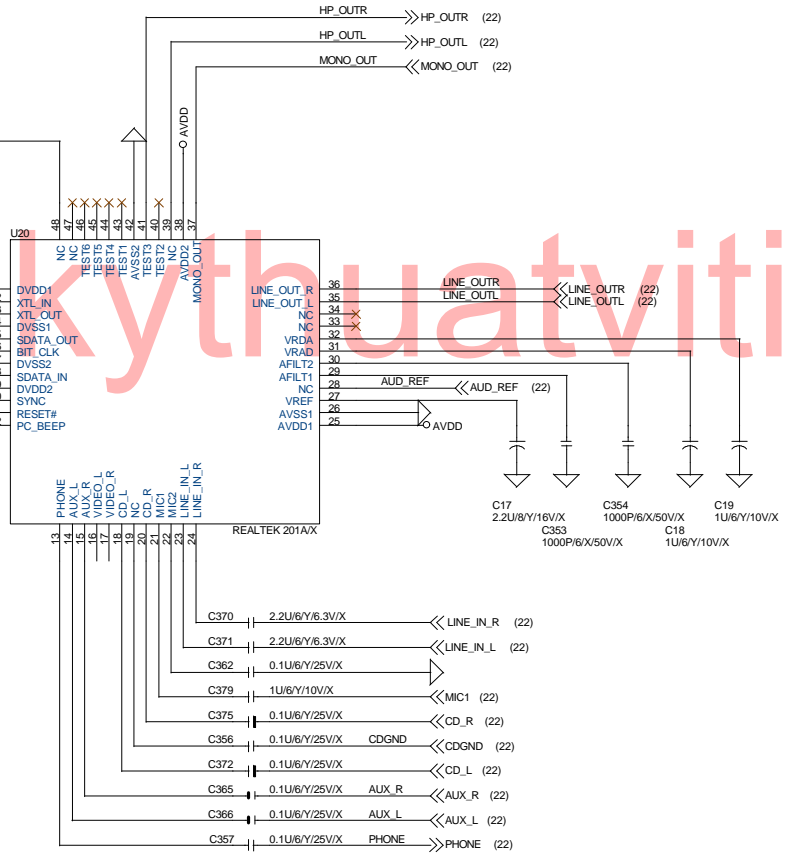
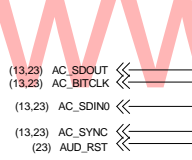
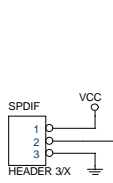
Title			Rev
IDE CONNECTOR			1.0
Size	Document Number		
Custom	GA-6OXT		
Date:	Wednesday, October 17, 2001	Sheet	19 of 30

www.kythuatvitiinh.com

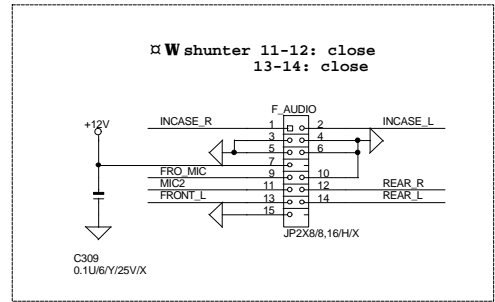
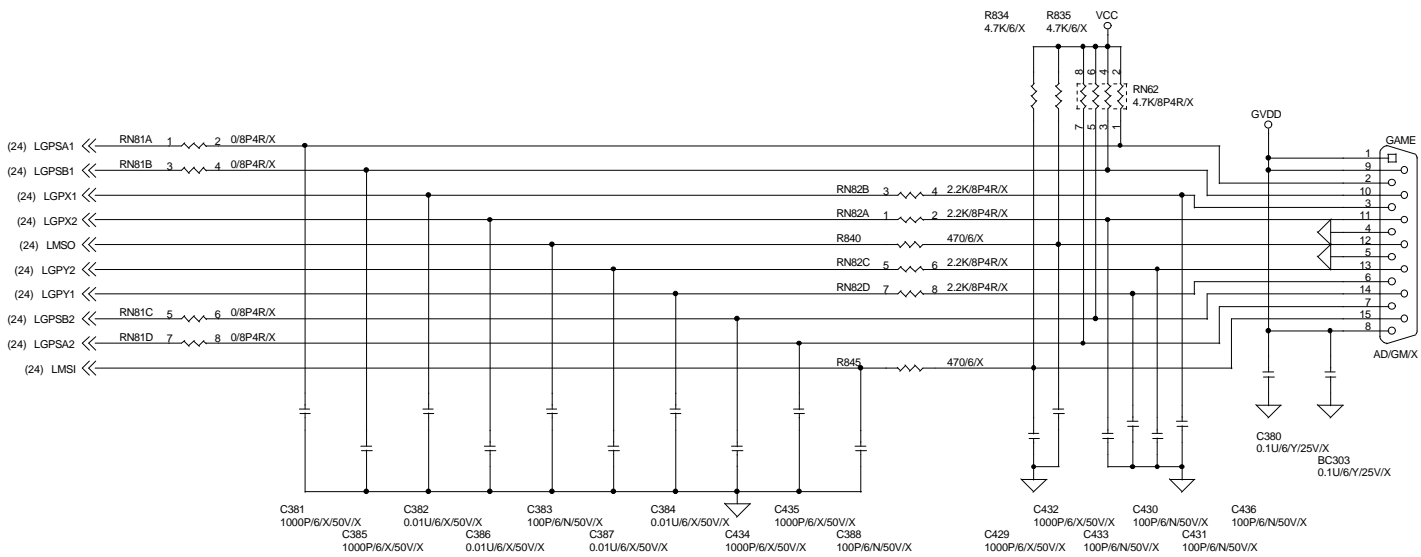
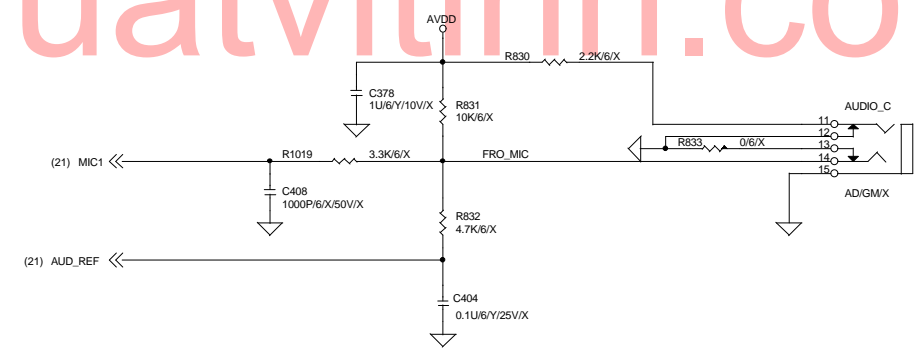
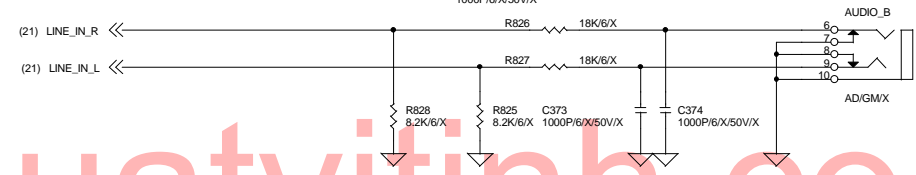
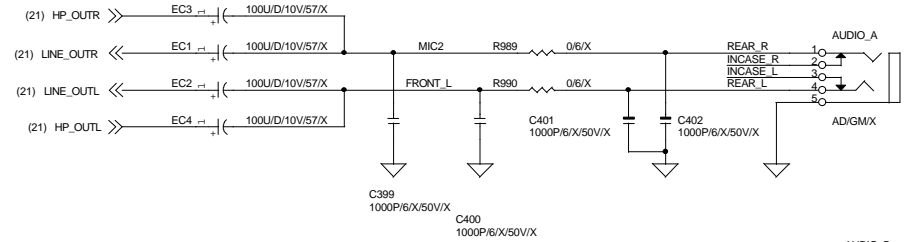
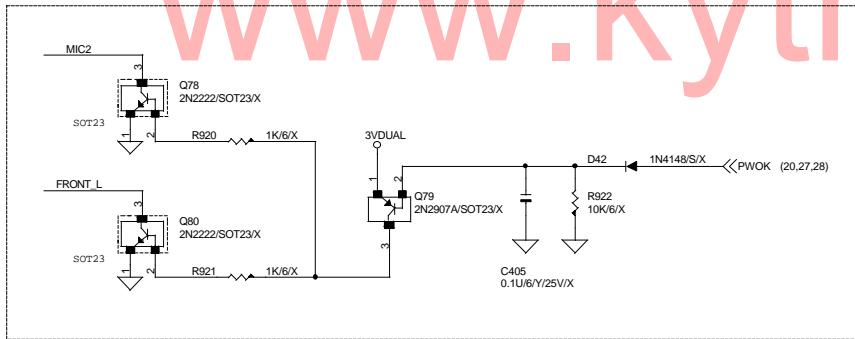
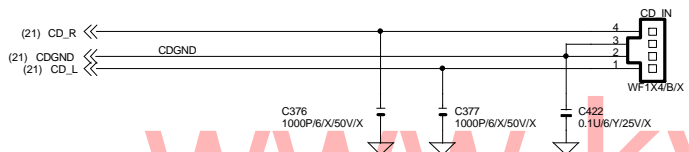
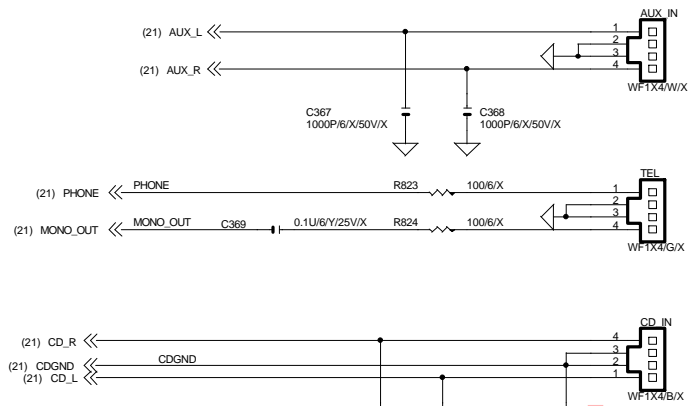


GIGABYTE CORP.		
Title PANEL & STR LED & RI		
Size Custom	Document Number GA-60XT	Rev 1.0
Date: Wednesday, October 17, 2001	Sheet 20	of 30

www.kythuatinh.com

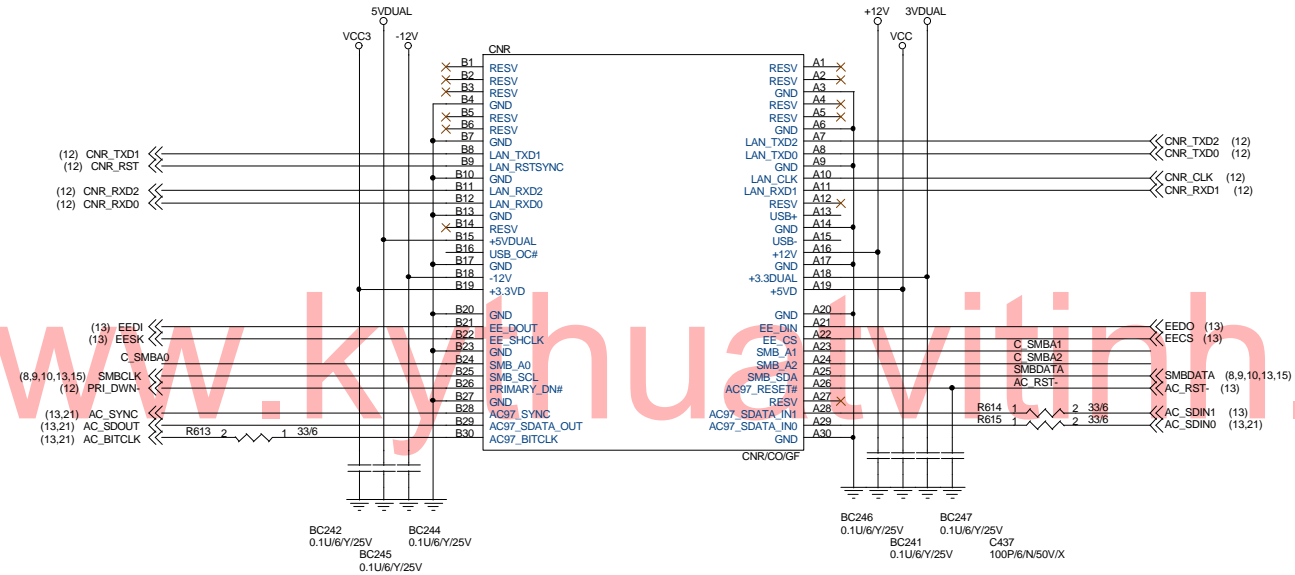


GIGABYTE CORP.		
Title CODEC		
Size Custom	Document Number GA-6OXT	Rev 1.0
Date: Wednesday, October 17, 2001	Sheet 21	of 30

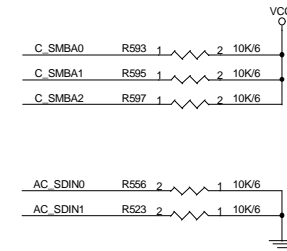
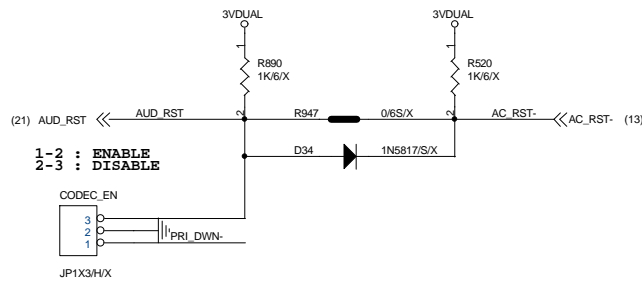
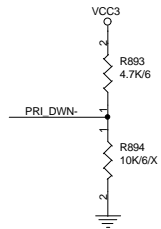


GIGABYTE CORP.			
Title PHONE JACK			
Size Custom	Document Number GA-60XT	Rev 1.0	
Date: Wednesday, October 17, 2001	Sheet 22	of 30	

CNR

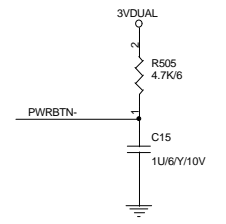
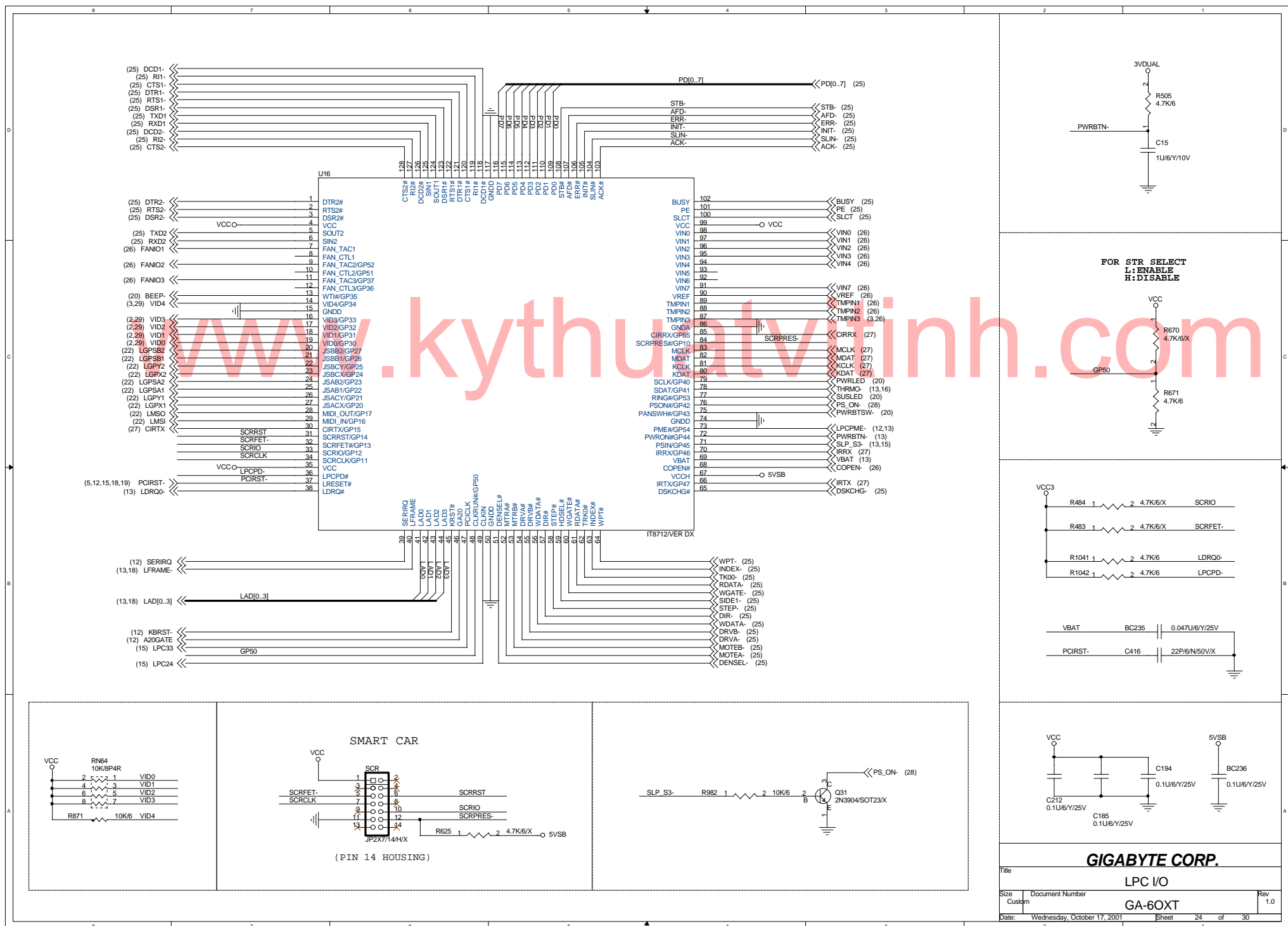


PLEASE CONNECT GPI PIN

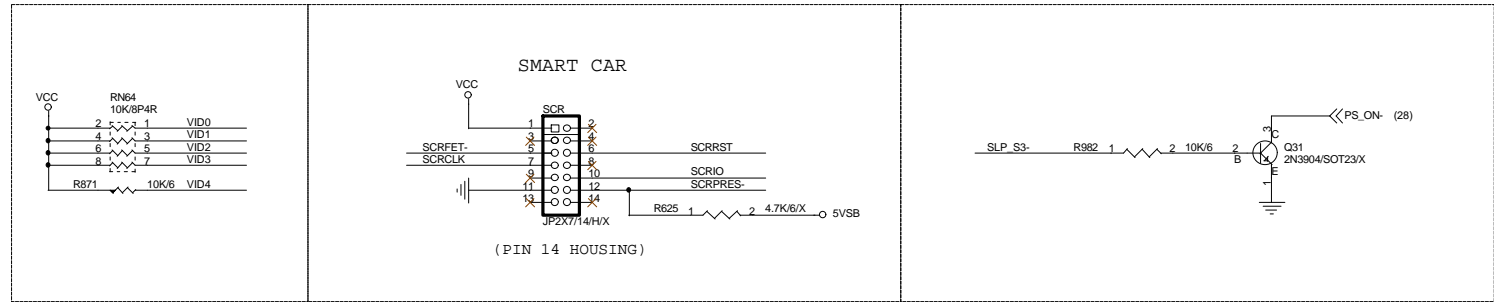
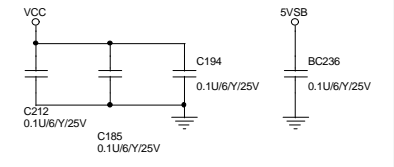
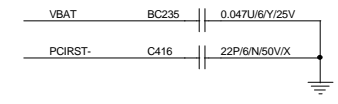
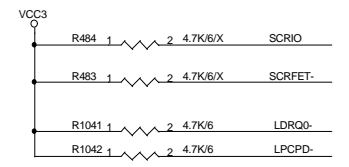
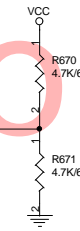


GIGABYTE CORP.

Title		FWH	
Size	Document Number	Rev	
Custom	GA-60XT	1.0	
Date:	Wednesday, October 17, 2001	Sheet	23 of 30



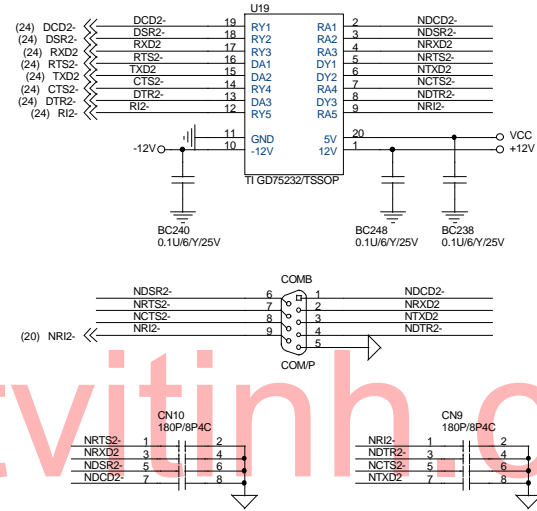
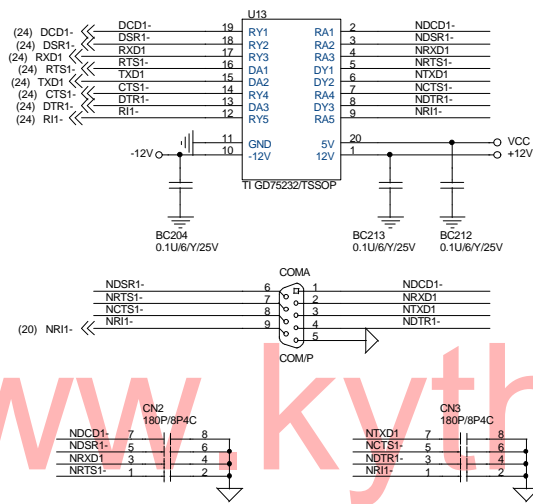
FOR STR SELECT
L: ENABLE
H: DISABLE



GIGABYTE CORP.

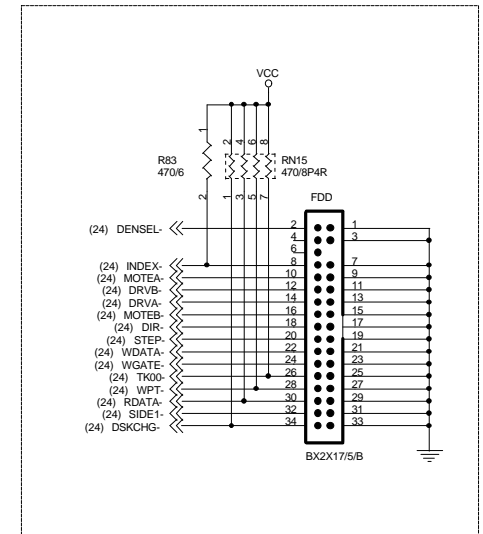
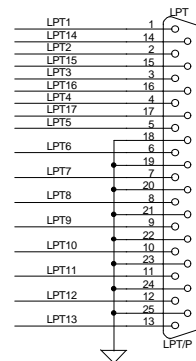
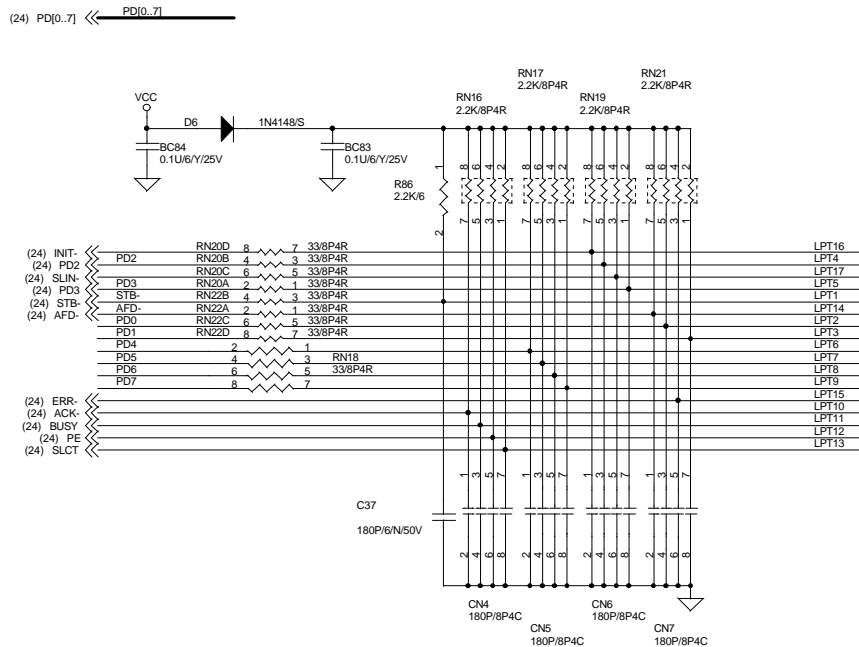
LPC I/O

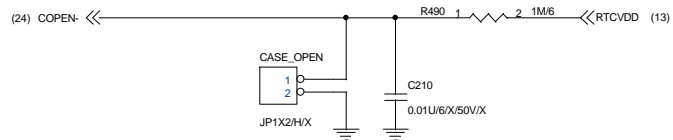
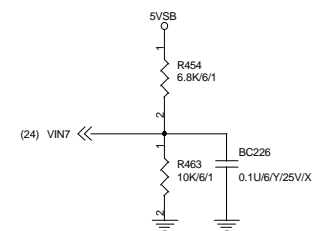
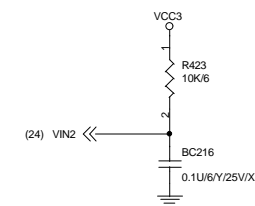
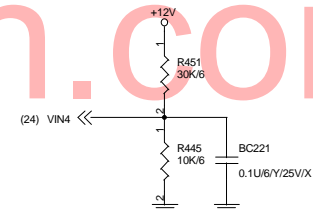
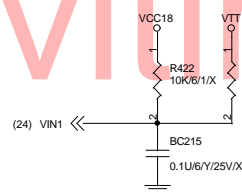
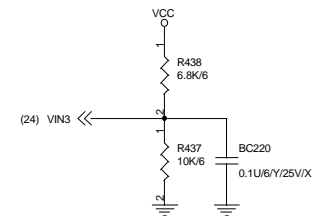
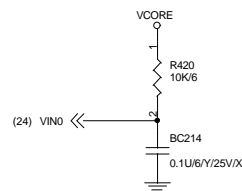
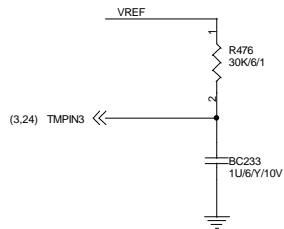
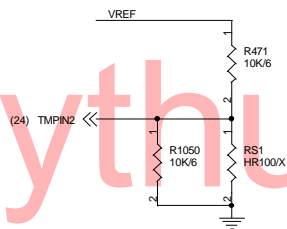
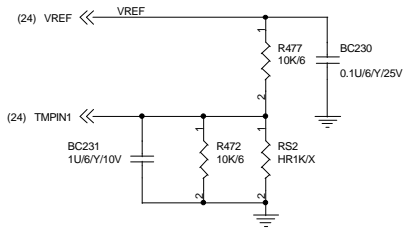
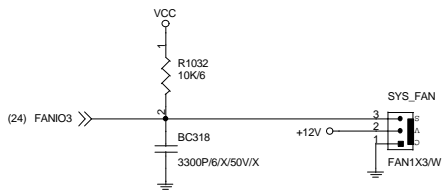
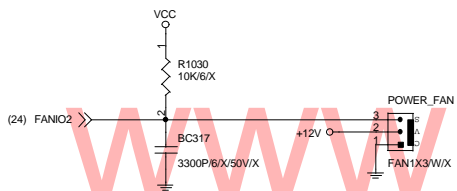
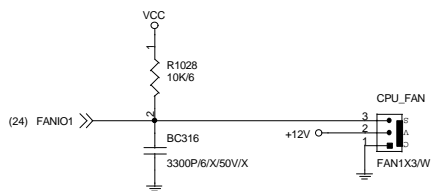
COM PORT



www.kythuatvinh.com

PRT PORT

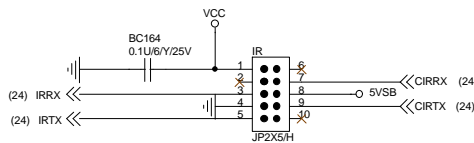
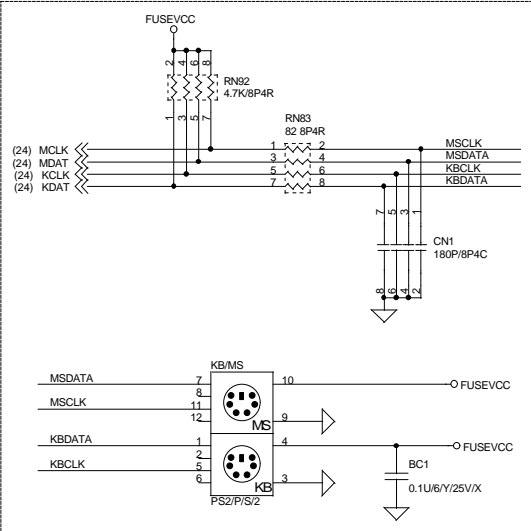
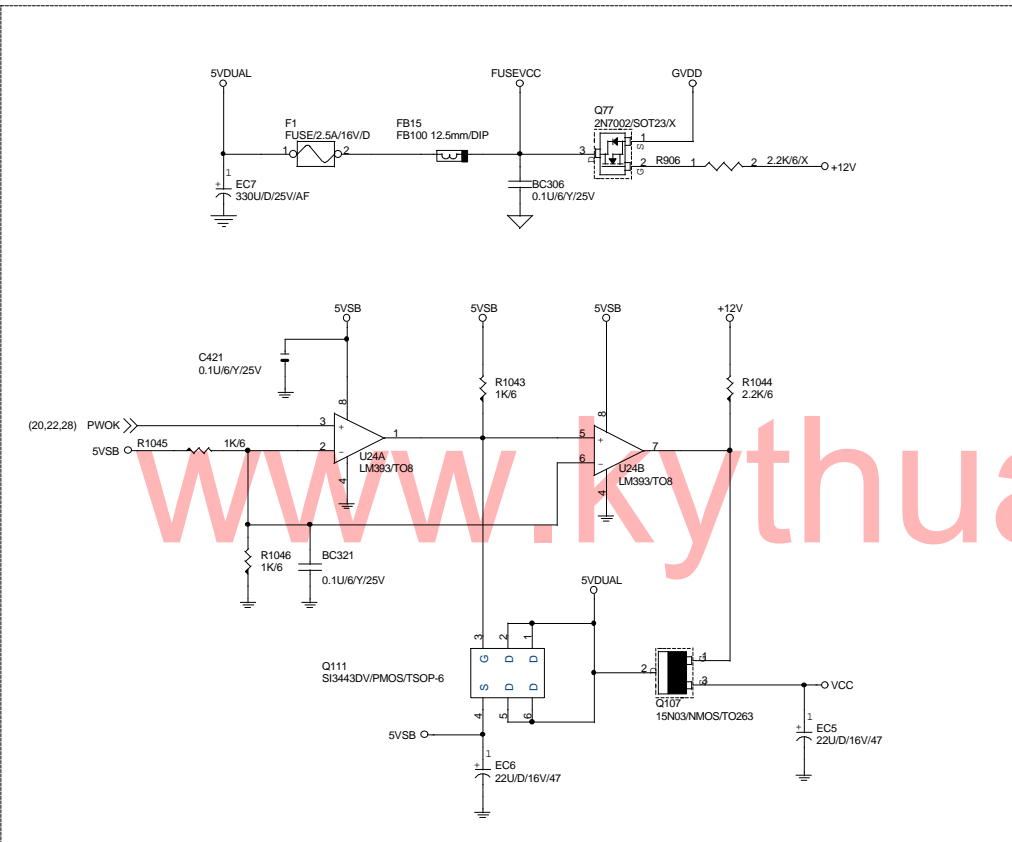




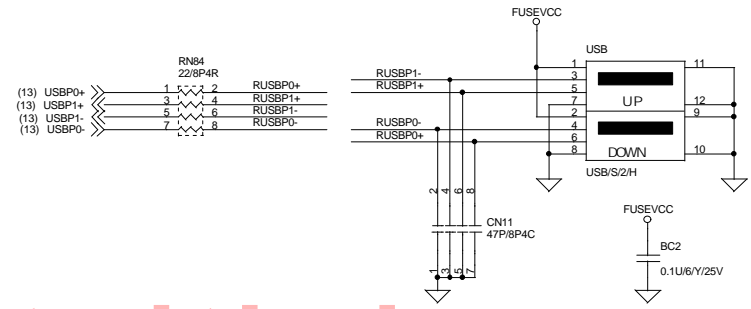
GIGABYTE CORP.

HARDWARE MONITOR

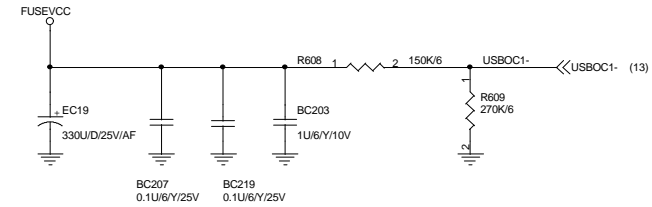
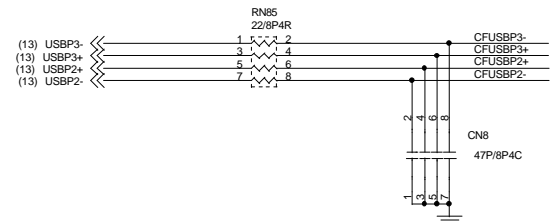
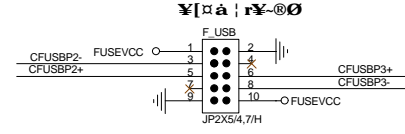
Title	GIGABYTE CORP. HARDWARE MONITOR		Rev	1.0
Size	Document Number	GA-6OXT		
Custom	Date: Wednesday, October 17, 2001	Sheet 26	of 30	



REAR USB PORT

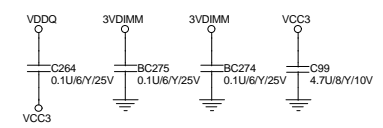
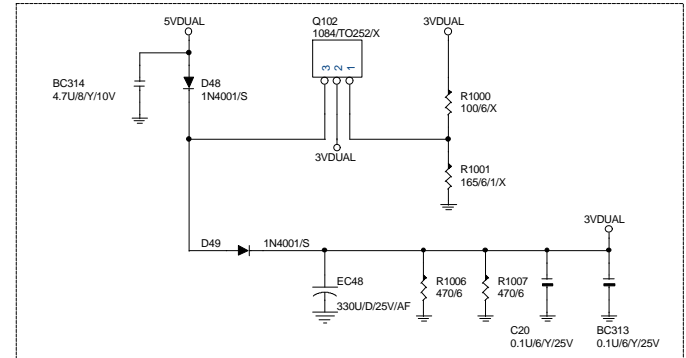
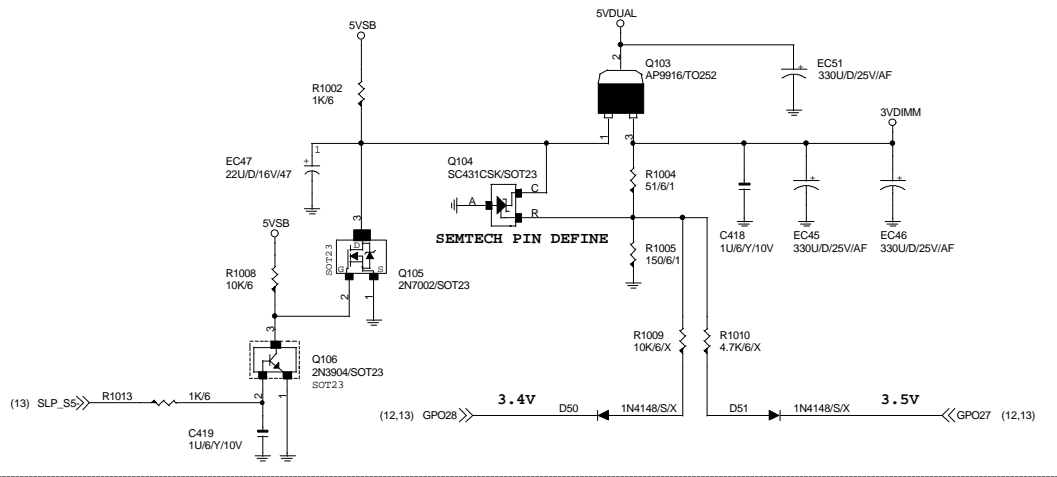
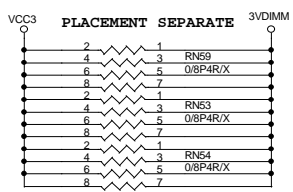
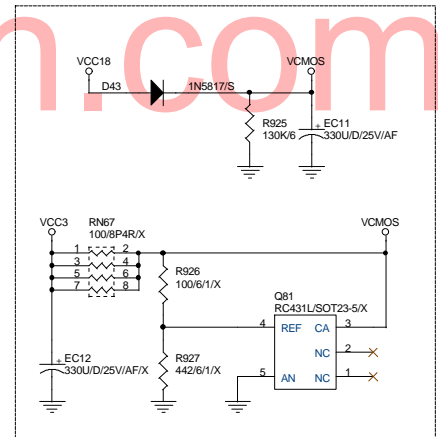
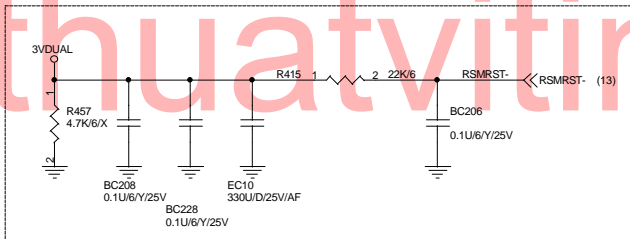
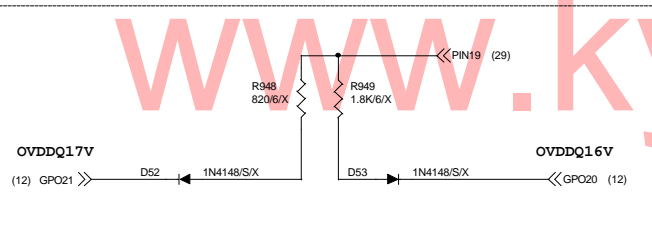
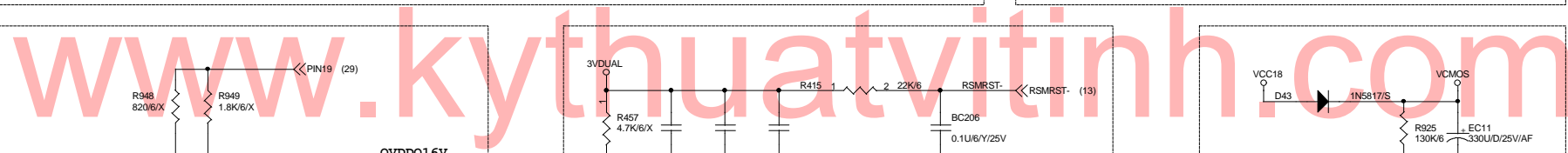
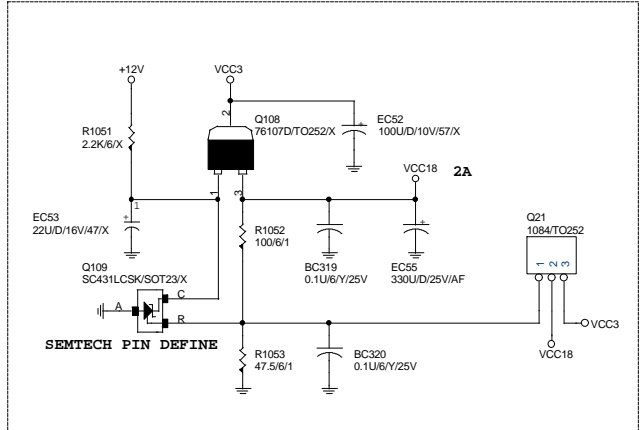
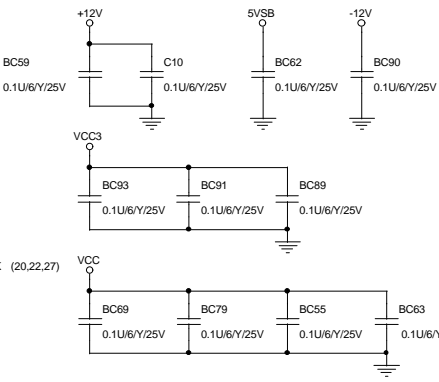
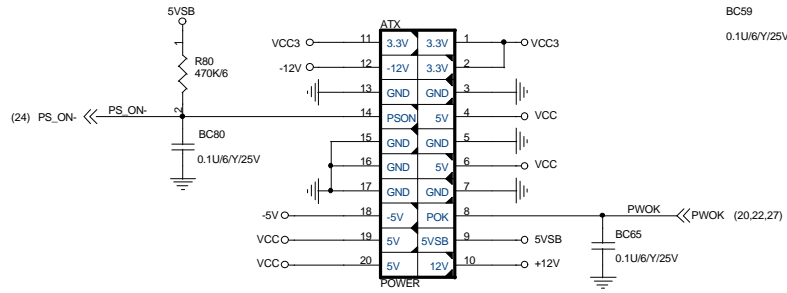


FRONT USB PORT



GIGABYTE CORP.			
Title KB & PS2 MOUSE & IR & USB			
Size Custom	Document Number GA-6OXT	Date Wednesday, October 17, 2001	Rev 1.0
		Sheet 27	of 30

ATX POWER CONNECTOR



GIGABYTE CORP.		
ATX CONN. & STR PWR		
Title	Document Number	Rev
	GA-60XT	1.0
Date:	Wednesday, October 17, 2001	Sheet 28 of 30

