

8TX REV 1.0

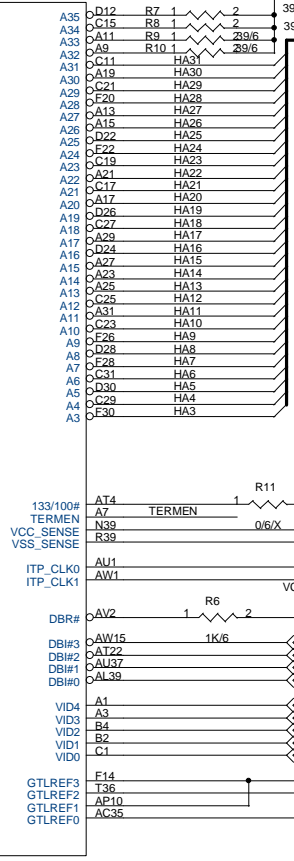
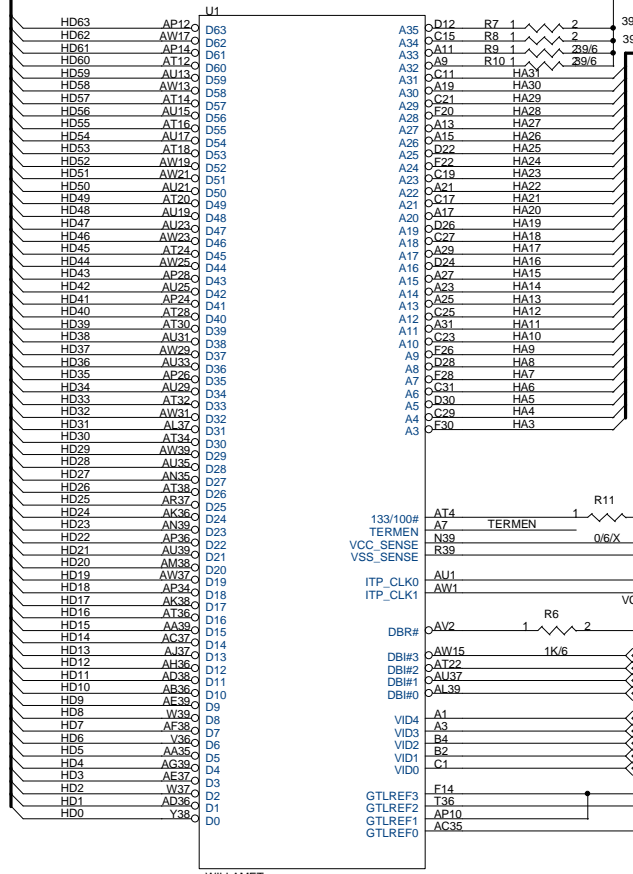
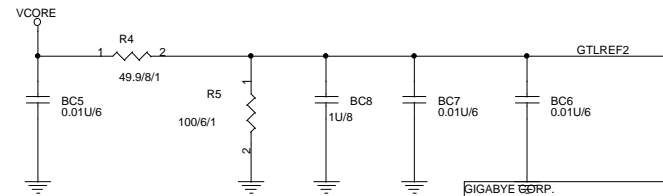
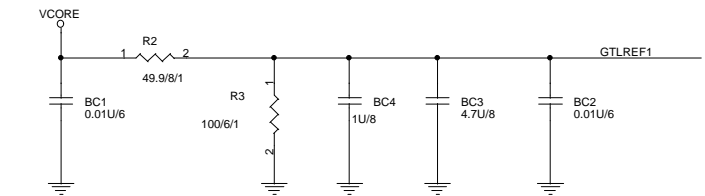
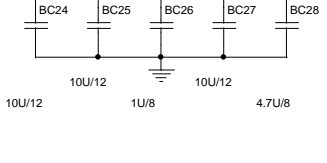
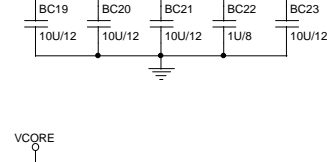
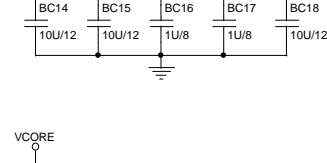
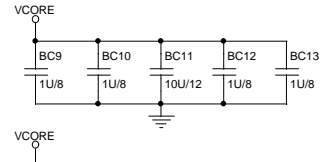
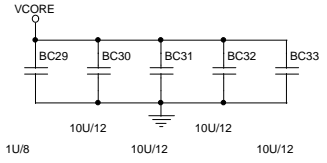
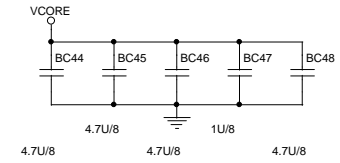
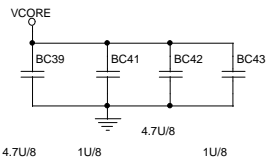
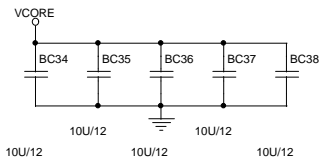
PAGE NO	PAGE INDEX
0	COVER PAGE
1	WILLAMETTE CPU SOCKET 1/3
2	WILLAMETTE CPU SOCKET 2/3
3	WILLAMETTE CPU SOCKET 3/3
4	TEHAMA (NORTH BRIDGE) 1/3
5	TEHAMA (NORTH BRIDGE) 2/3
6	TEHAMA (NORTH BRIDGE) 3/3
7	WILLAMATE & TEHAMA POWER
8	RIMM 1 & 2
9	RIMM 3 & 4
10	RIMM TERMINATOR
11	CLOCK GEN.
12	DRCG 1 & 2
13	ICH (SOUTH BRIDGE) 1/3
14	ICH (SOUTH BRIDGE) 2/3
15	ICH (SOUTH BRIDGE) 3/3
16	AGP PRO SLOT
17	PCI1,PCI2
18	PCI3,PCI4
19	PCI5
20	PCI SOUND CHIP
21	AC97 CODEC
22	AUDIO JACK 1/2
23	AUDIO JACK 2/2
24	IDE CONNECTOR
25	DUAL BIOS (FWH)
26	GIGA FRONT PANEL
27	WINBOND LPC I/O
28	CNR SLOT
29	COM PORT , LPT PORT
30	PS2 MOUSE & KEYBOARD, IR & CIR, SMB PORT
31	HW MONITOR CIRCUITS
32	TOTAL POWER(REGULATOR +5V VCC3 18DUSB VCC18 25VDUAL) 1/4
33	TOTAL POWER(POWER CONNECTOR VCC3AUX) 2/4
34	TOTAL POWER(PWM HIP6301) 3/4
35	TOTAL POWER(PWM HIP6301) 3/4
36	REAR USB PORT/FRONT USB PORT
37	BACK CAPACITOR
38	HISTORY

LINK
 WILLAMT1.SCH
 WILLAMT2.SCH
 WILLAMT3.SCH
 TEHAMA1.SCH
 TEHAMA2.SCH
 TEHAMA3.SCH
 WI_TEHA.SCH
 RIMM1_2.SCH
 RIMM3_4.SCH
 RI_TERM.SCH
 CLOCK.SCH
 DRCG.SCH
 ICH1.SCH
 ICH2.SCH
 ICH3.SCH
 AGPPRO.SCH
 PCI1_2.SCH
 PCI3_4.SCH
 PCI5.SCH
 SOUND.SCH
 CODEC.SCH
 AUDIO_01.SCH
 AUDIO_02.SCH
 IDE.SCH
 DUALFWH.SCH
 WFPANEL.SCH
 WLPPIO.SCH
 CNR.SCH
 WCOM_LPT.SCH
 KB_PS2.SCH
 WHWMO.SCH
 POWER1.SCH
 POWER2.SCH
 POWER3.SCH
 POWER4.SCH
 USB.SCH
 back_cap.SCH
 HISTORY.SCH

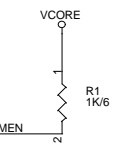
PCB STACK:

.....
 COMPONENT
 POWER
 INNER1
 INNER2
 GND
 SOLDER

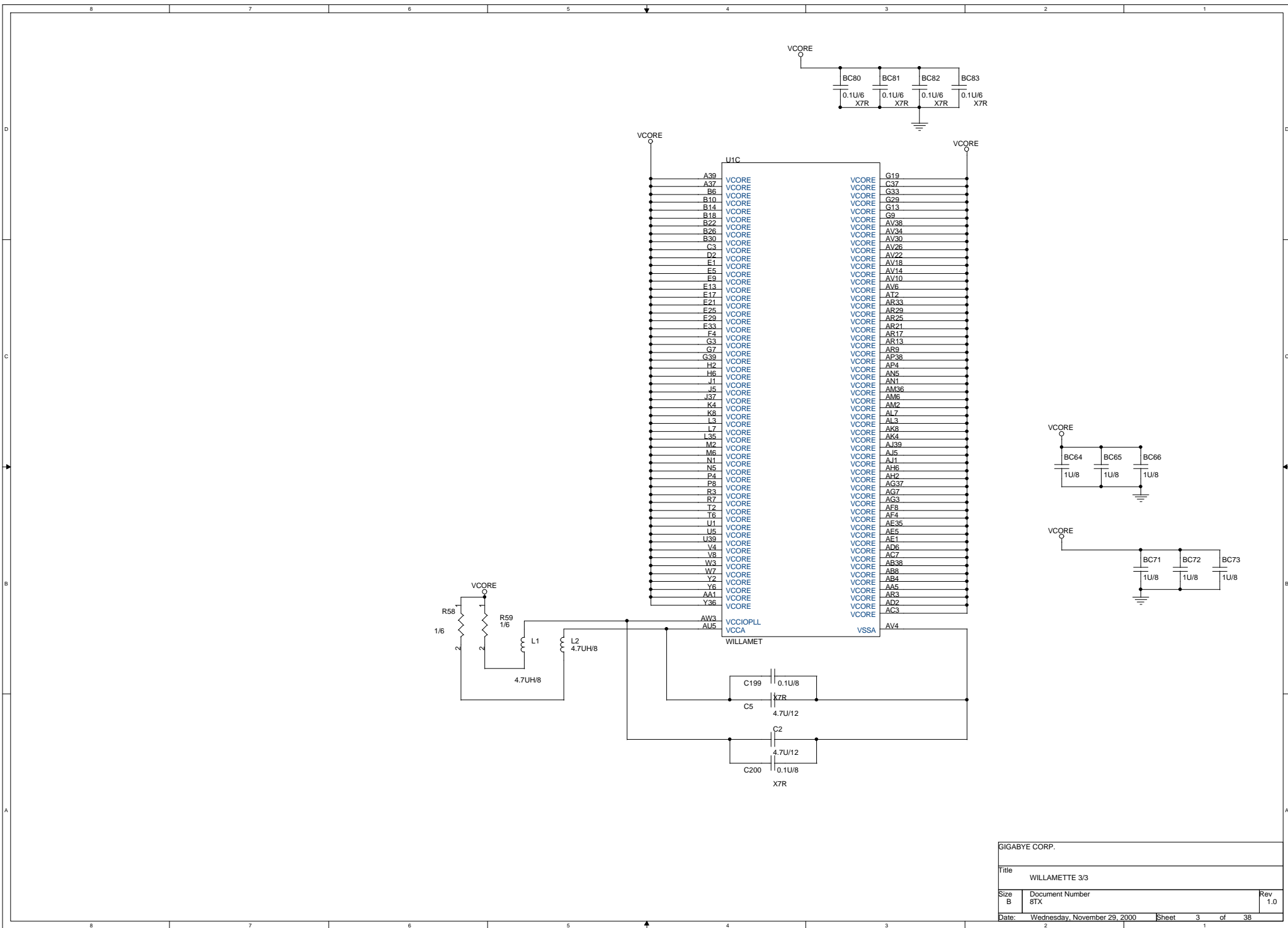
GIGABYTE CORP.			
Title COVER SHEET			
Size B	Document Number 8TX	Rev 1.0	
Date: Wednesday, November 29, 2000	Sheet 1	of 1	38



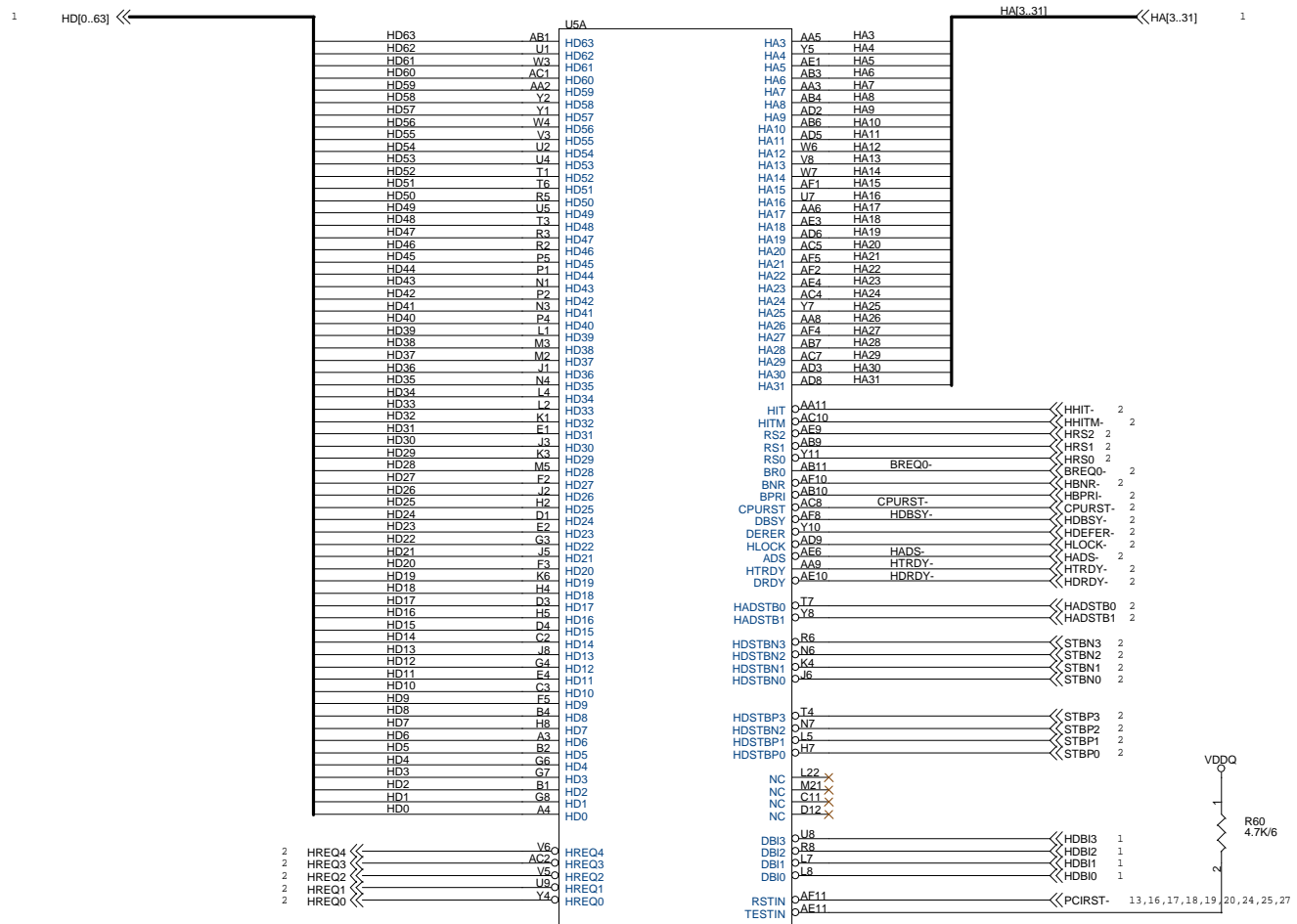
- LINK
- WILLAMT2.SCH
- WILLAMT3.SCH
- TEHAMA1.SCH
- TEHAMA2.SCH
- TEHAMA3.SCH
- WI_TERRA.SCH
- RIMM1_2.SCH
- RIMM3_4.SCH
- RI_TERM.SCH
- CLOCK.SCH
- DRCG.SCH
- ICH1.SCH
- ICH2.SCH
- ICH3.SCH
- AGPPRO.SCH
- PCI1_2.SCH
- PCI3_4.SCH
- PCI5.SCH
- SOUND.SCH
- CODEC.SCH
- AUDIO_J1.SCH
- AUDIO_J2.SCH
- IDF.SCH
- DUALFWH.SCH
- WFPANEL.SCH
- MLECIO.SCH
- CNR.SCH
- WCOM_LPT.SCH
- KB_PS2.SCH
- MEMMO.SCH
- POWER1.SCH
- POWER2.SCH
- POWER3.SCH
- POWER4.SCH
- USB.SCH
- BACK_CAP.SCH
- HISTORY.SCH

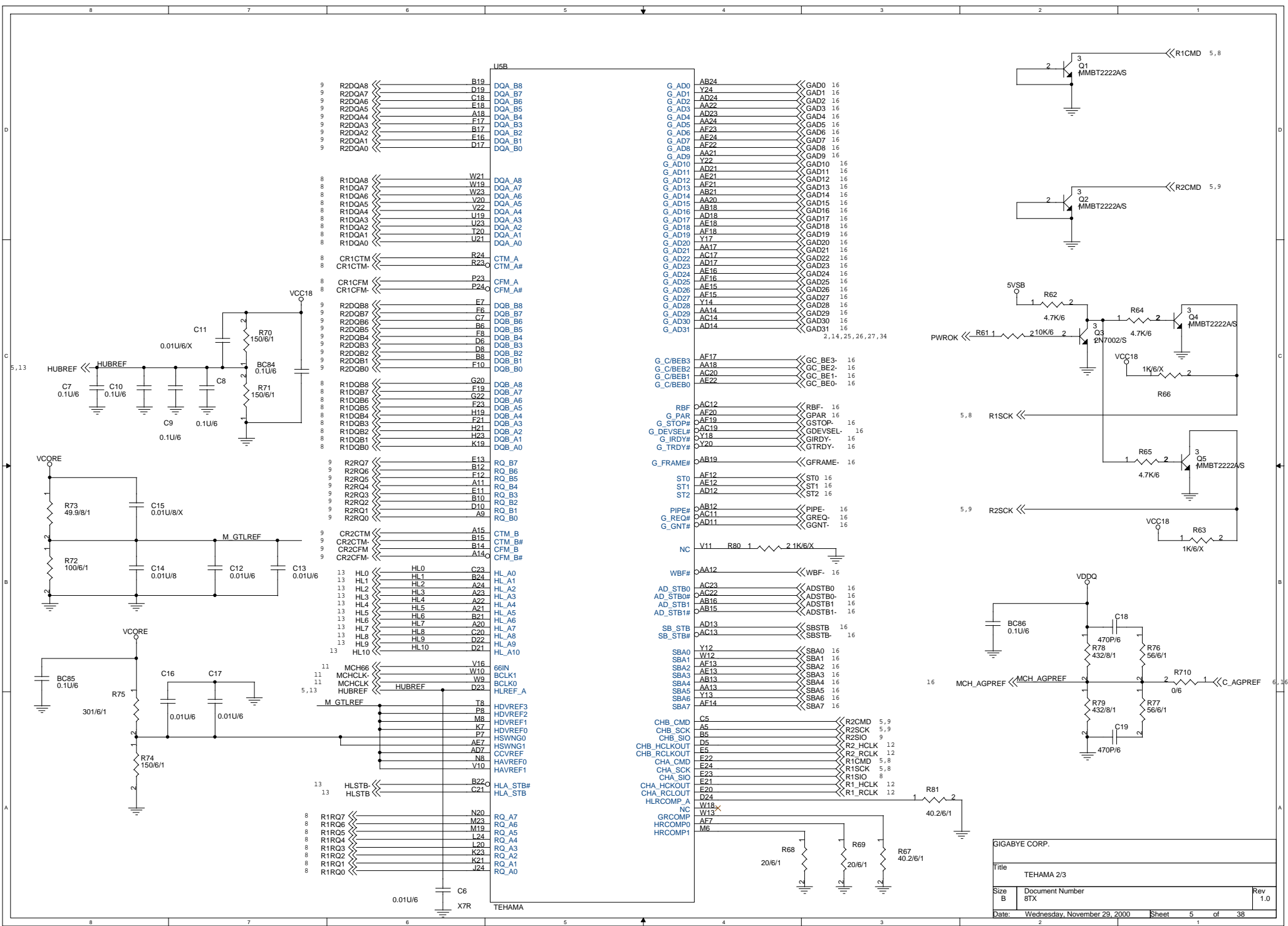


GIGABYTE CORP.		
Title WILLAMETTE 1/3		
Size B	Document Number 8TX	Rev 1.0
Date: Wednesday, November 29, 2000	Sheet 1	of 38

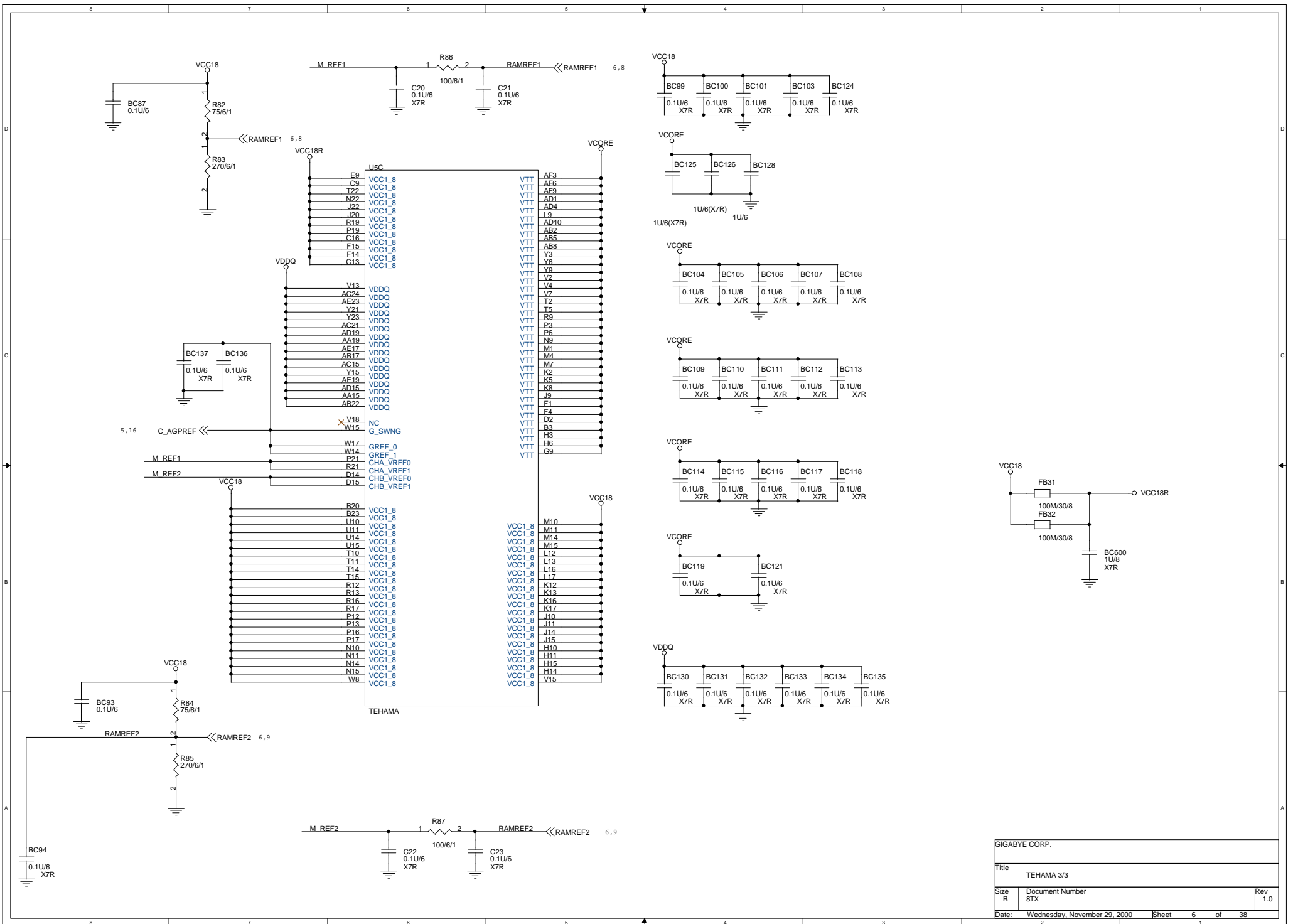


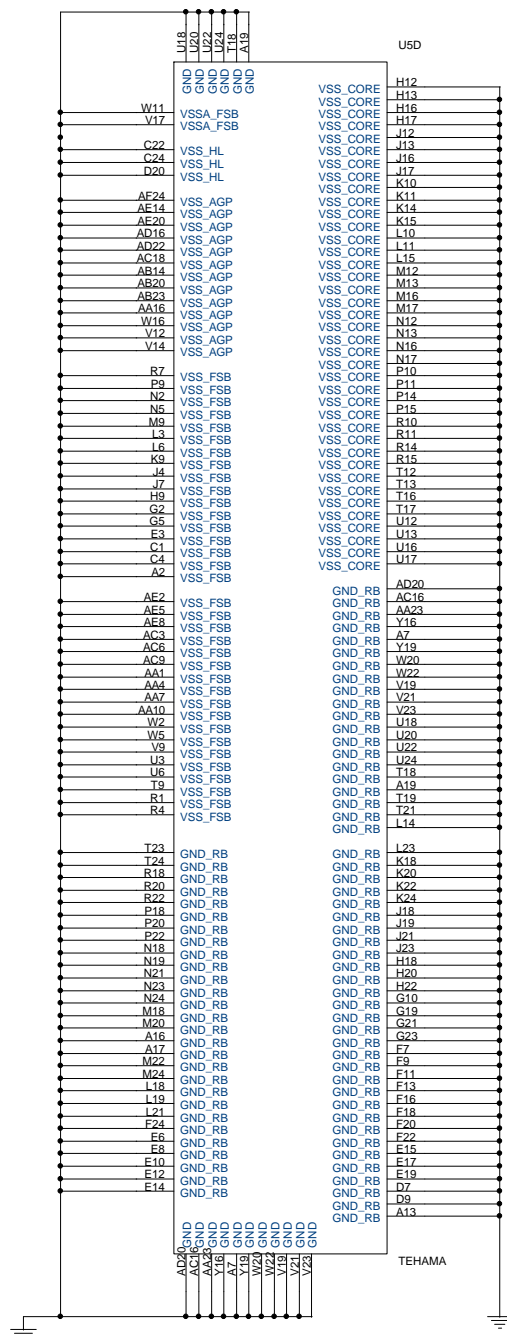
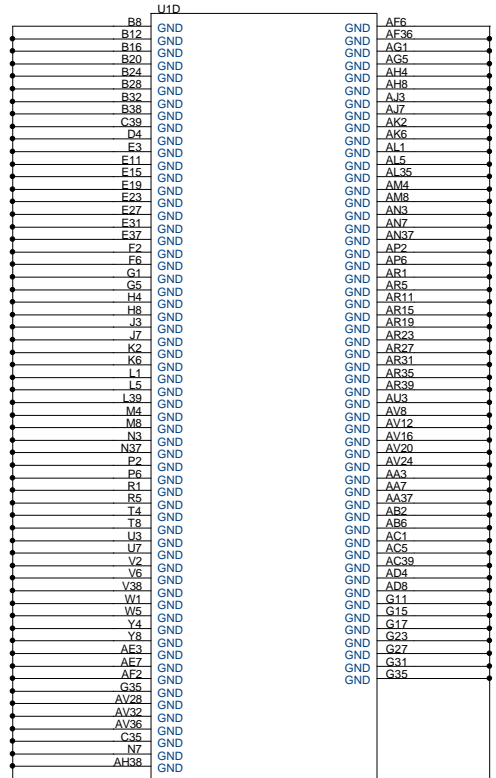
GIGABYTE CORP.		
Title WILLAMETTE 3/3		
Size B	Document Number 8TX	Rev 1.0
Date: Wednesday, November 29, 2000	Sheet 3	of 38



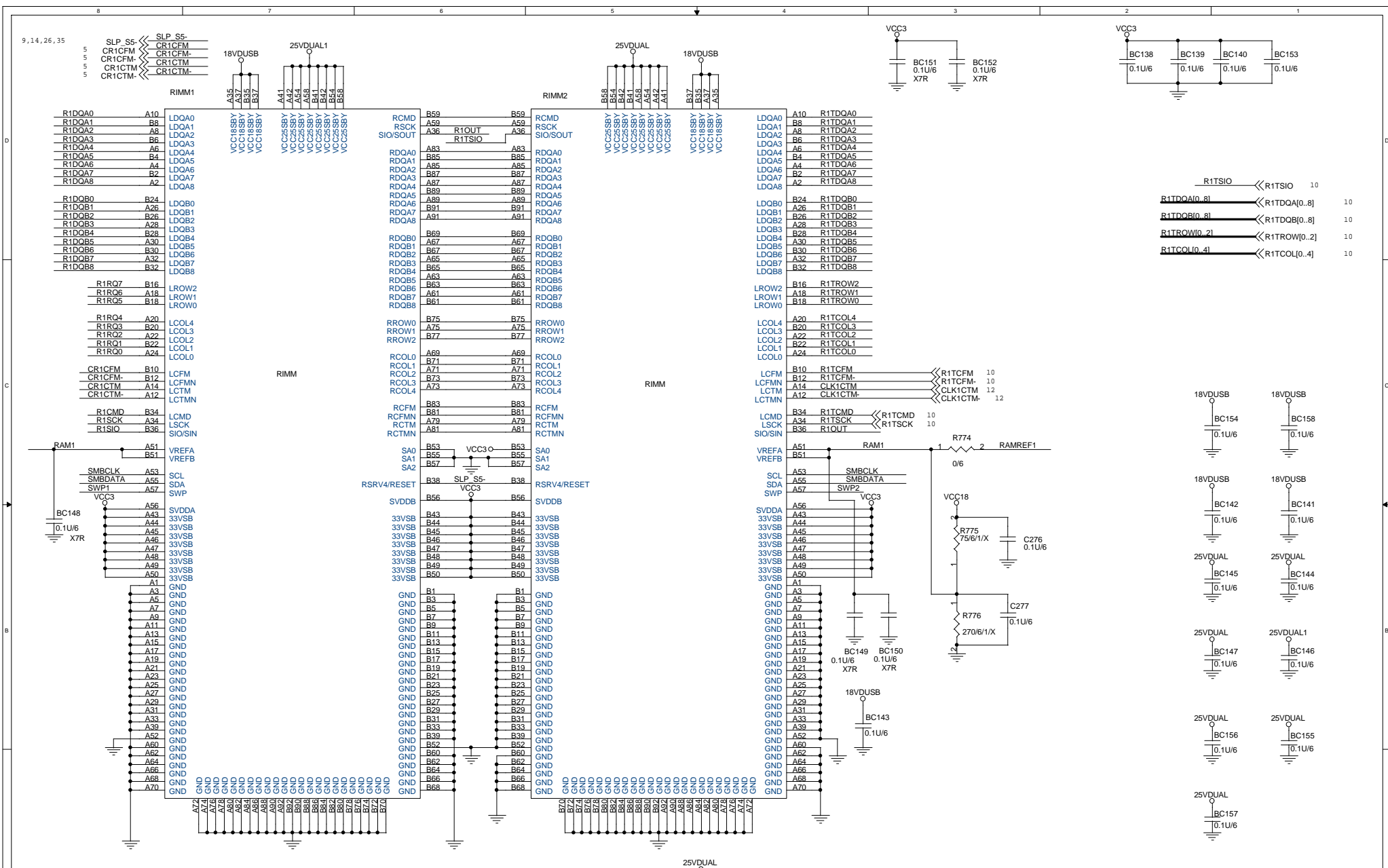


GIGABYTE CORP.		
Title	TEHAMA 2/3	
Size	Document Number	Rev
B	8TX	1.0
Date:	Wednesday, November 29, 2000	Sheet 5 of 38

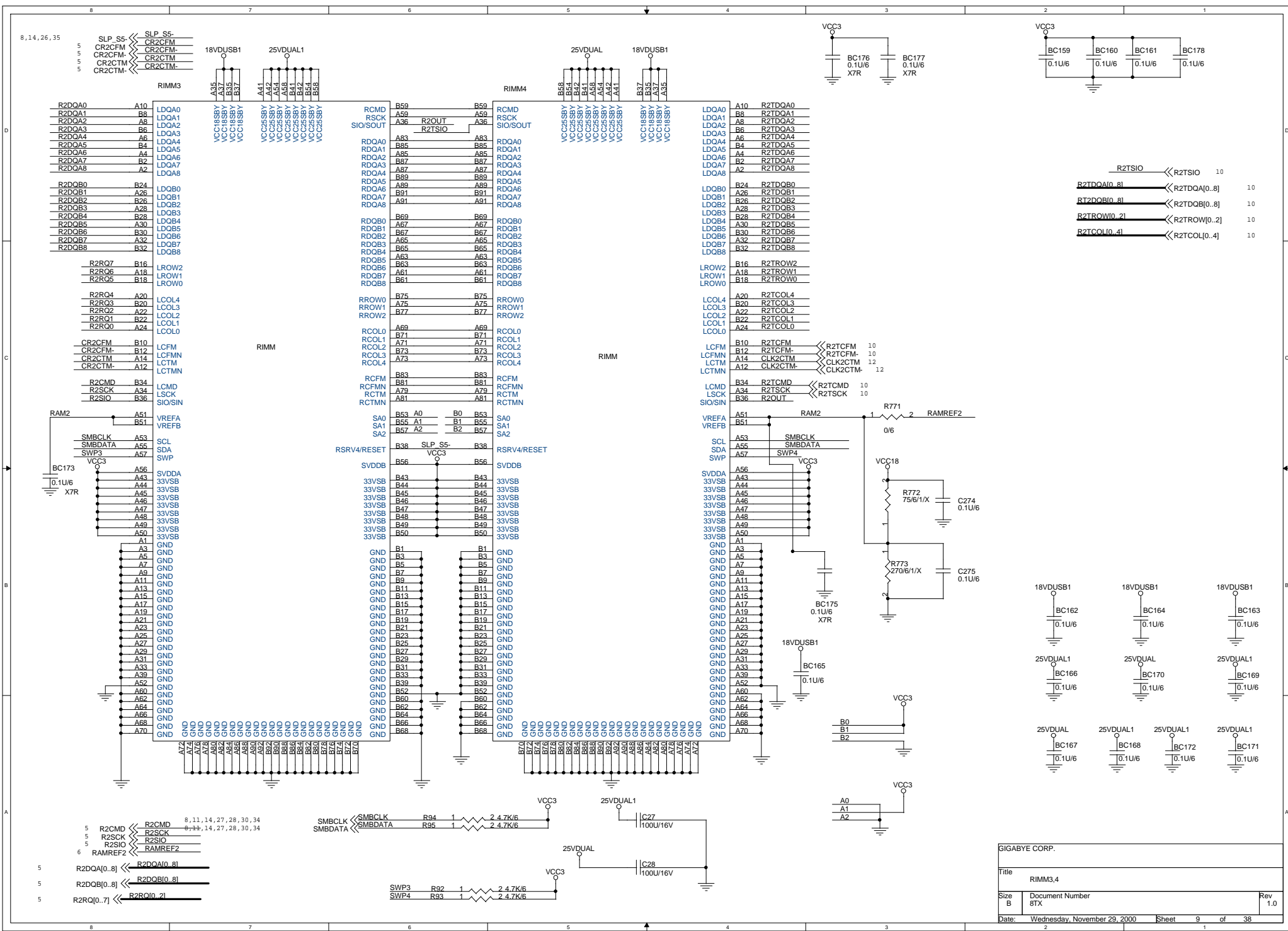




Title		
8TX		
Size	Document Number	Rev
B	WILL_TEHA	1.0
Date:	Wednesday, November 29, 2000	Sheet 7 of 38



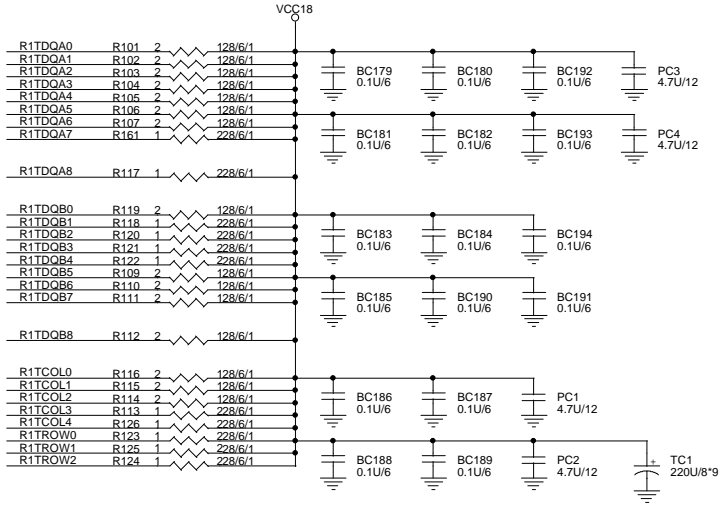
GIGABYTE CORP.			
Title RIMM1.2			
Size B	Document Number 8TX	Rev 1.0	
Date: Wednesday, November 29, 2000	Sheet 8	of 38	



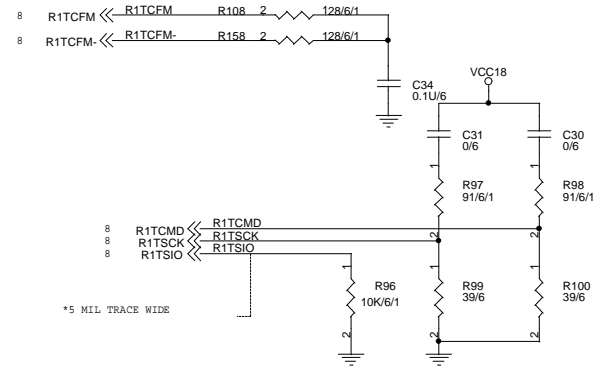
GIGABYTE CORP.		
Title	RIMM3,4	
Size	Document Number	Rev
B	8TX	1.0
Date:	Wednesday, November 29, 2000	Sheet 9 of 38

RIMM TERMINATOR

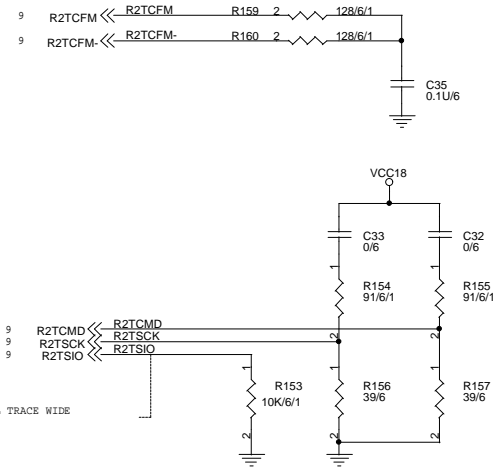
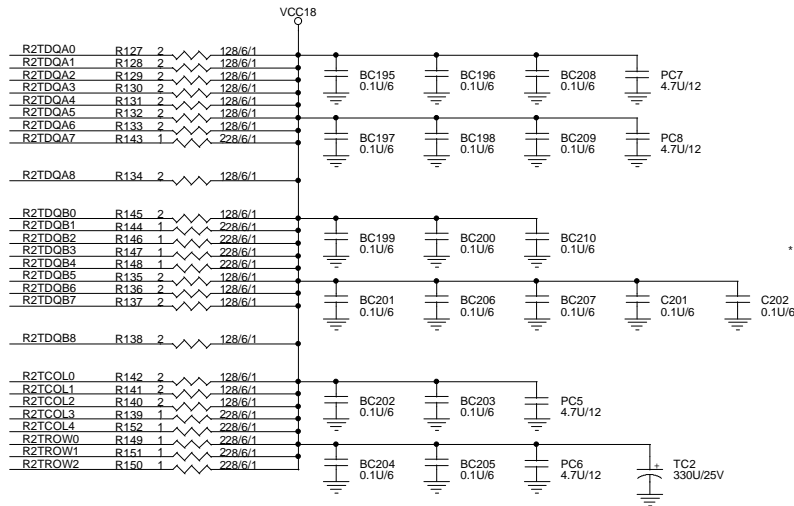
8 R1TDQA[0..8] << R1TDQA0..8
 8 R1TDQB[0..8] << R1TDQB0..8
 8 R1TROW[0..2] << R1TROW0..2
 8 R1TCOL[0..4] << R1TCOL0..4



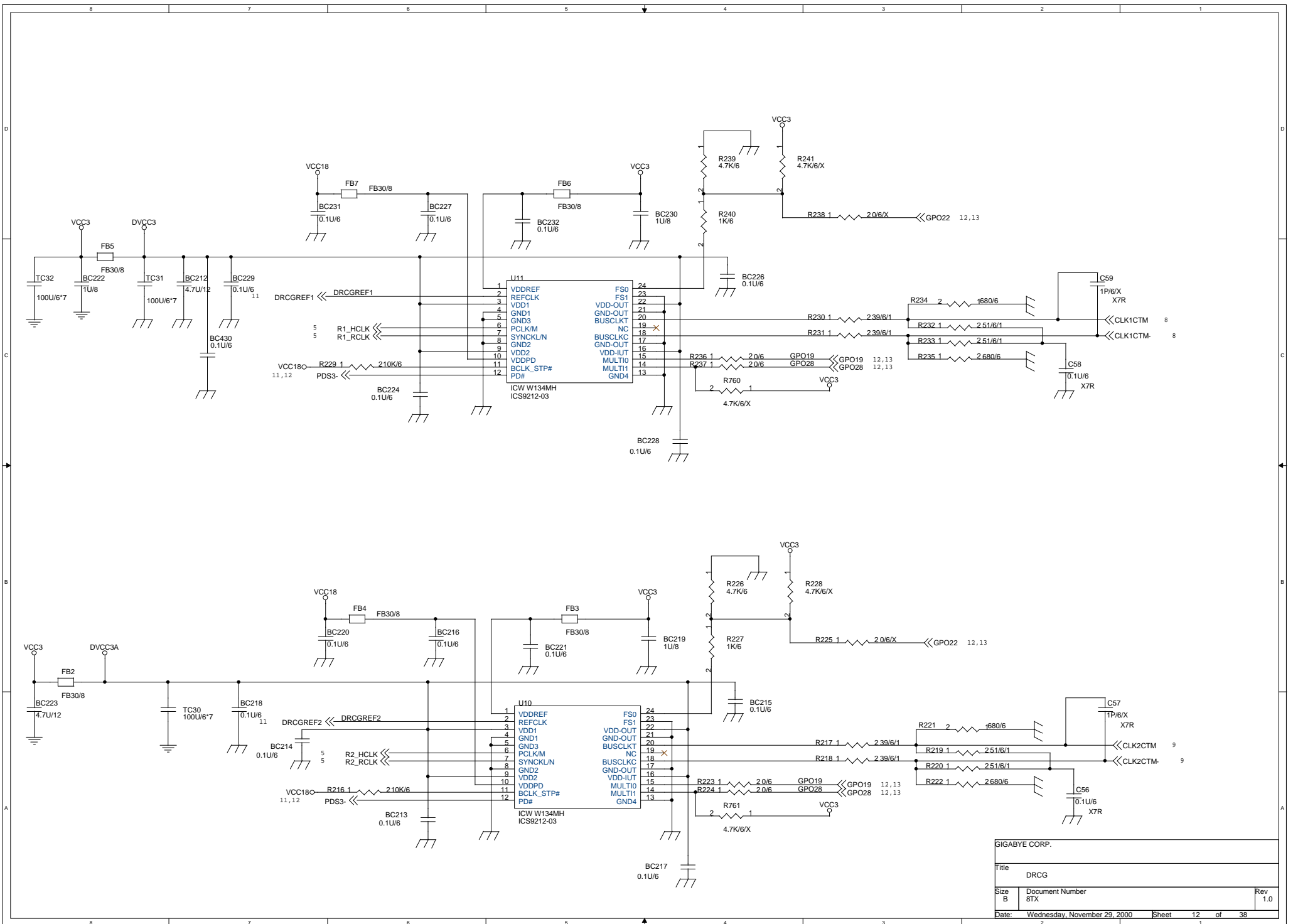
*Use one 0.1UF cap per two RSL signals.



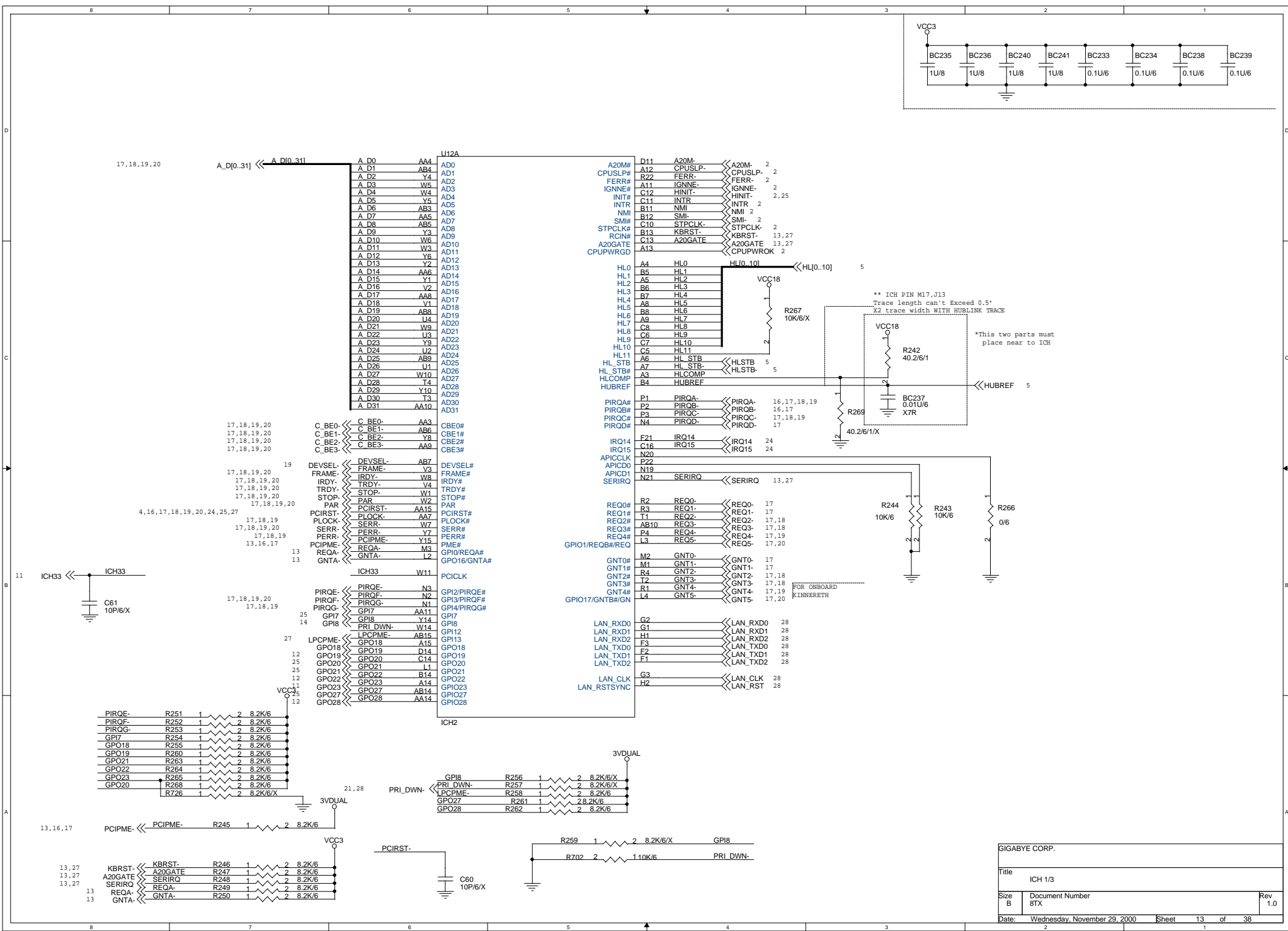
9 R2TDQA[0..8] << R2TDQA0..8
 9 R2TDQB[0..8] << R2TDQB0..8
 9 R2TROW[0..2] << R2TROW0..2
 9 R2TCOL[0..4] << R2TCOL0..4



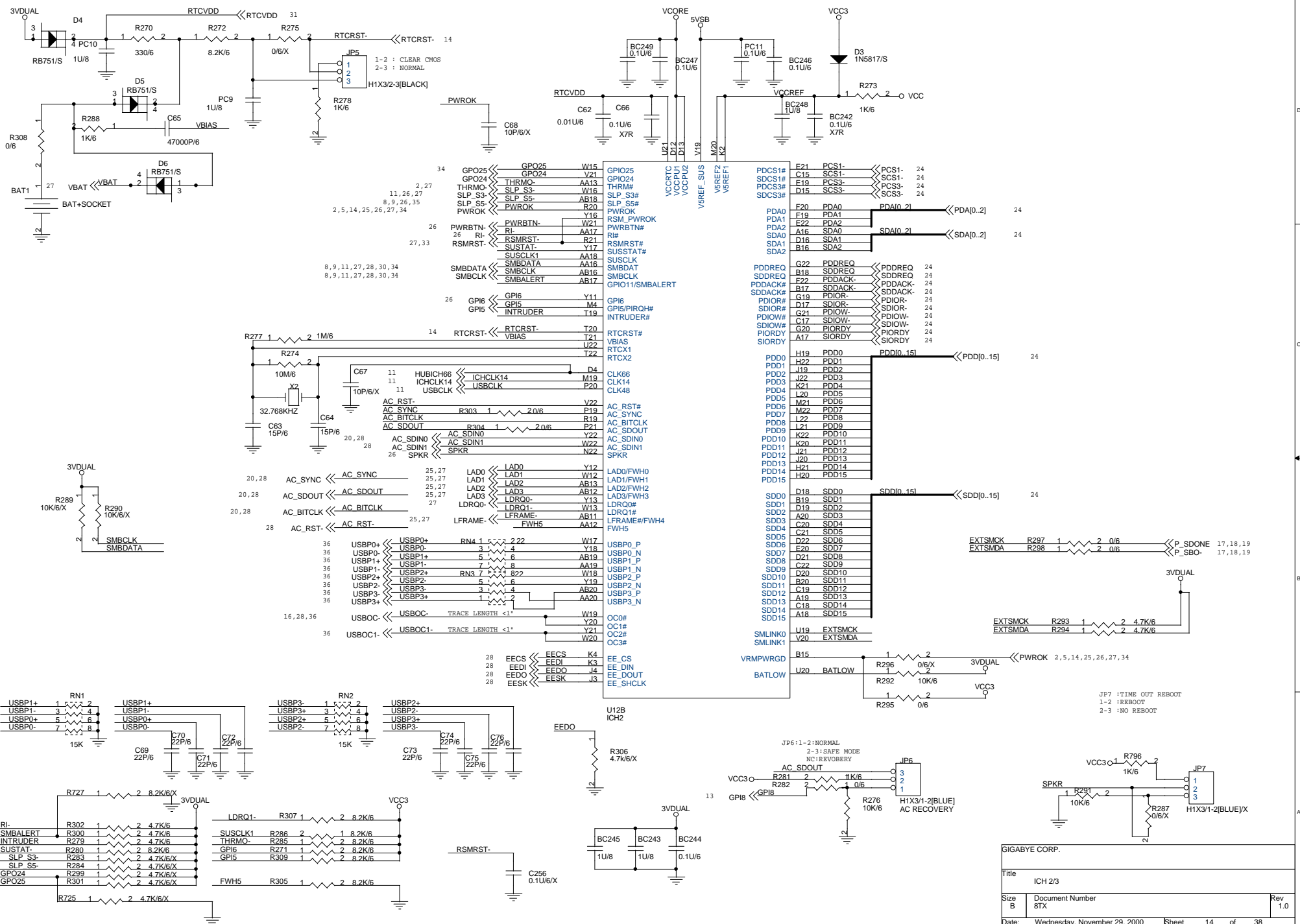
GIGABYTE CORP.		
Title RIMM TERMINATOR, USB PORT		
Size B	Document Number 8TX	Rev 1.0
Date: Wednesday, November 29, 2000	Sheet 10	of 38



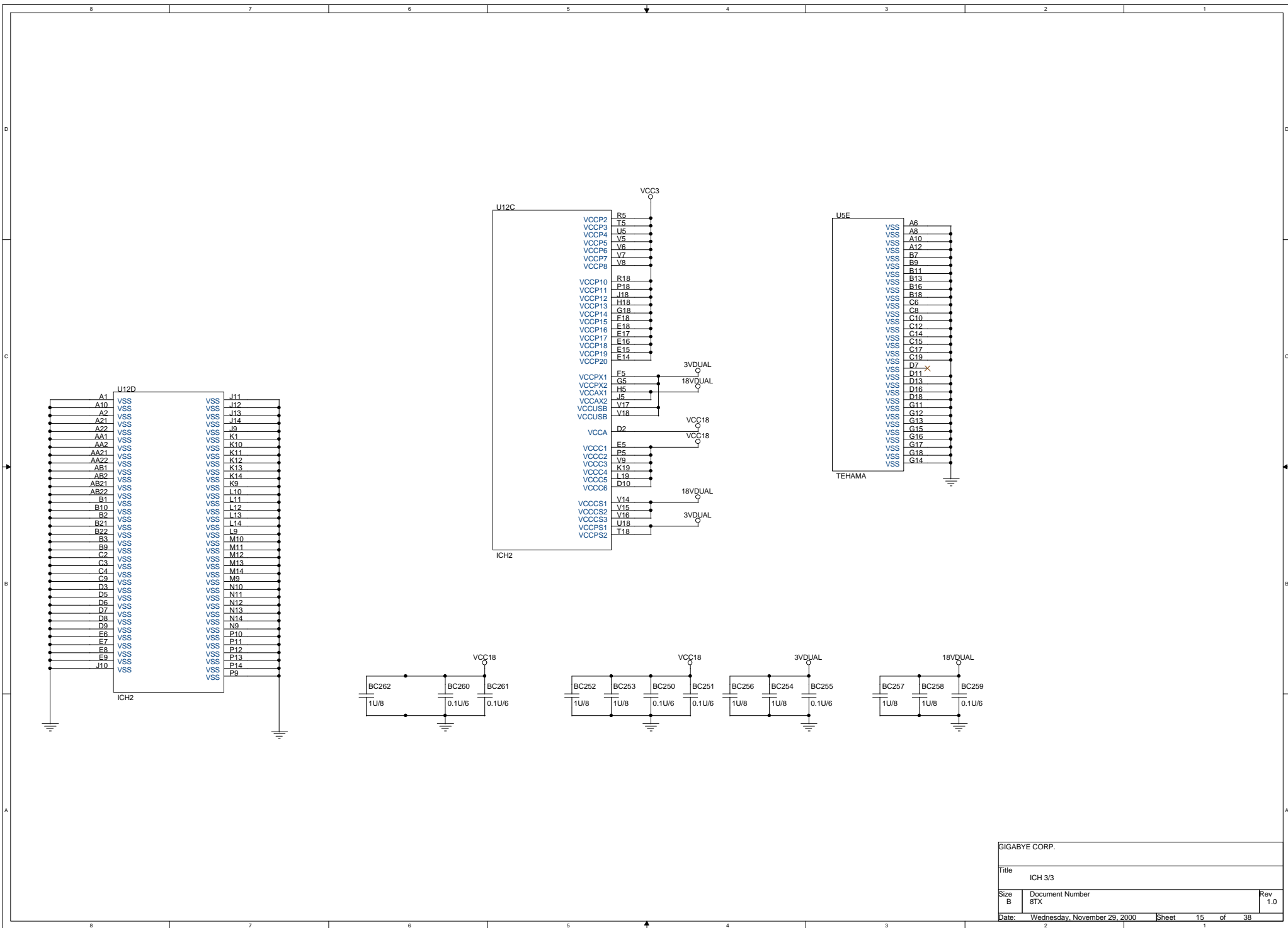
GIGABYTE CORP.		
Title DRCG		
Size B	Document Number 8TX	Rev 1.0
Date: Wednesday, November 29, 2000	Sheet 12	of 38

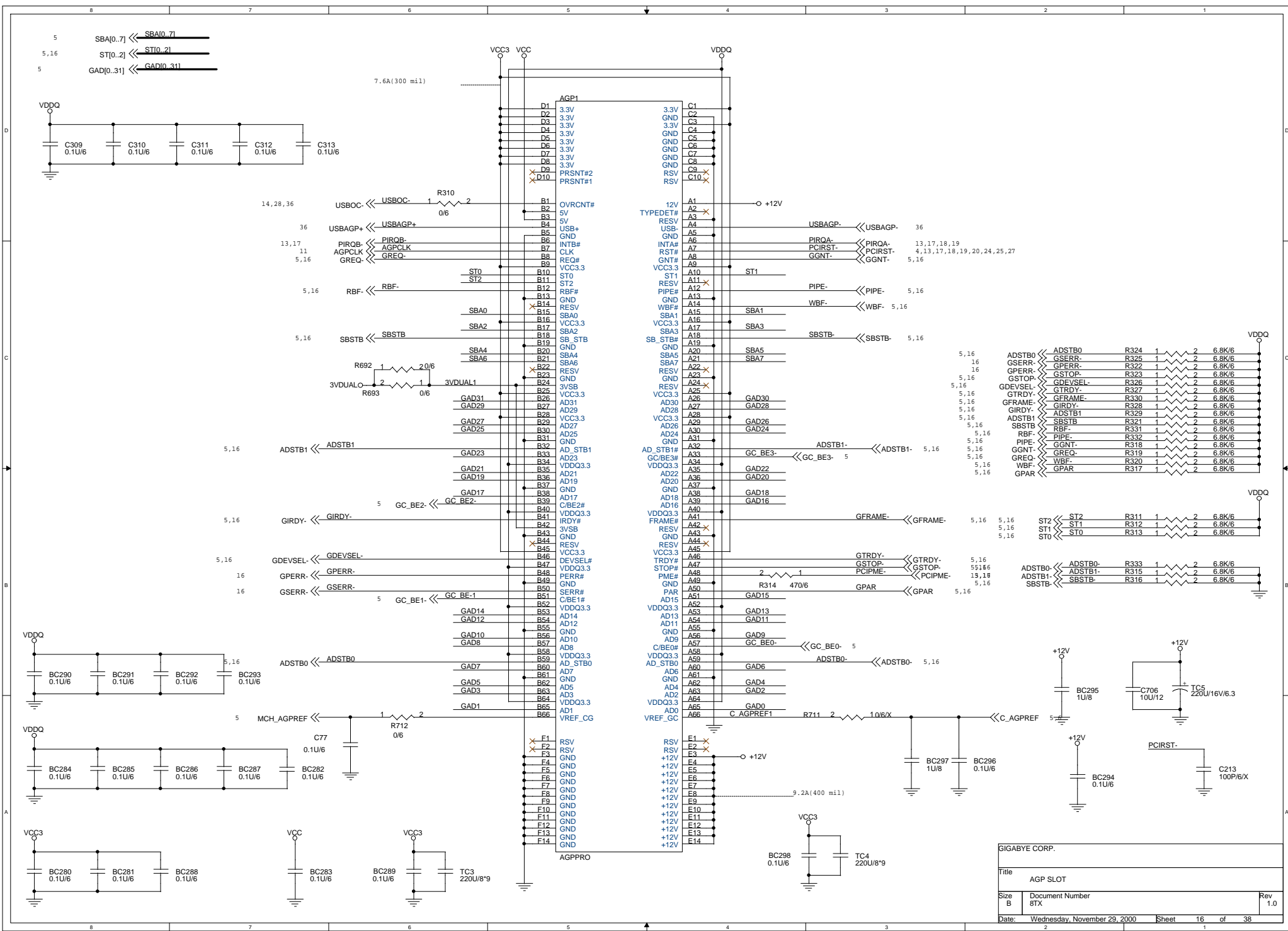


GIGABYTE CORP.		
Title ICH 1/3		
Size B	Document Number 8TX	Rev 1.0
Date: Wednesday, November 29, 2000	Sheet 13	of 38

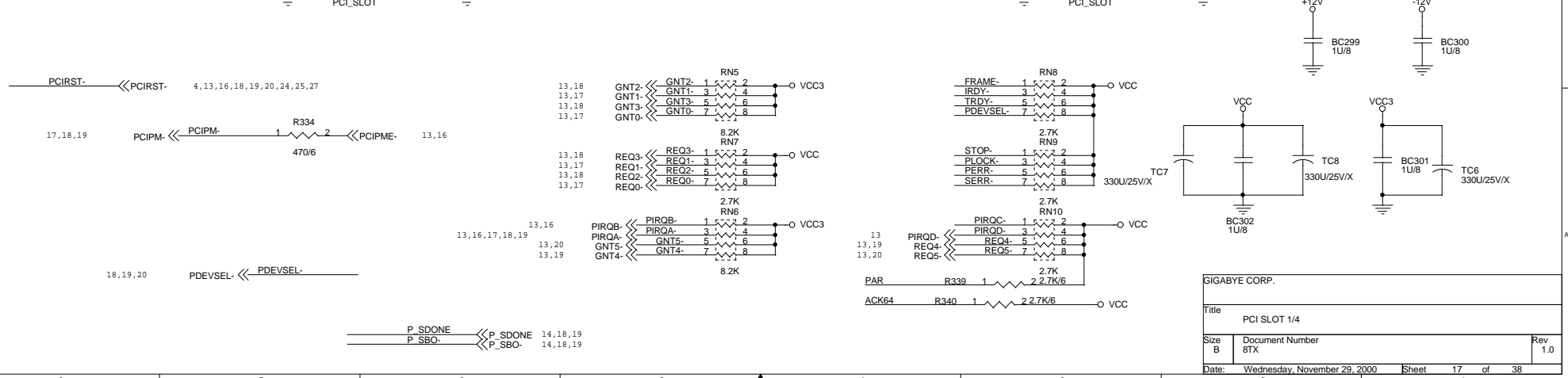
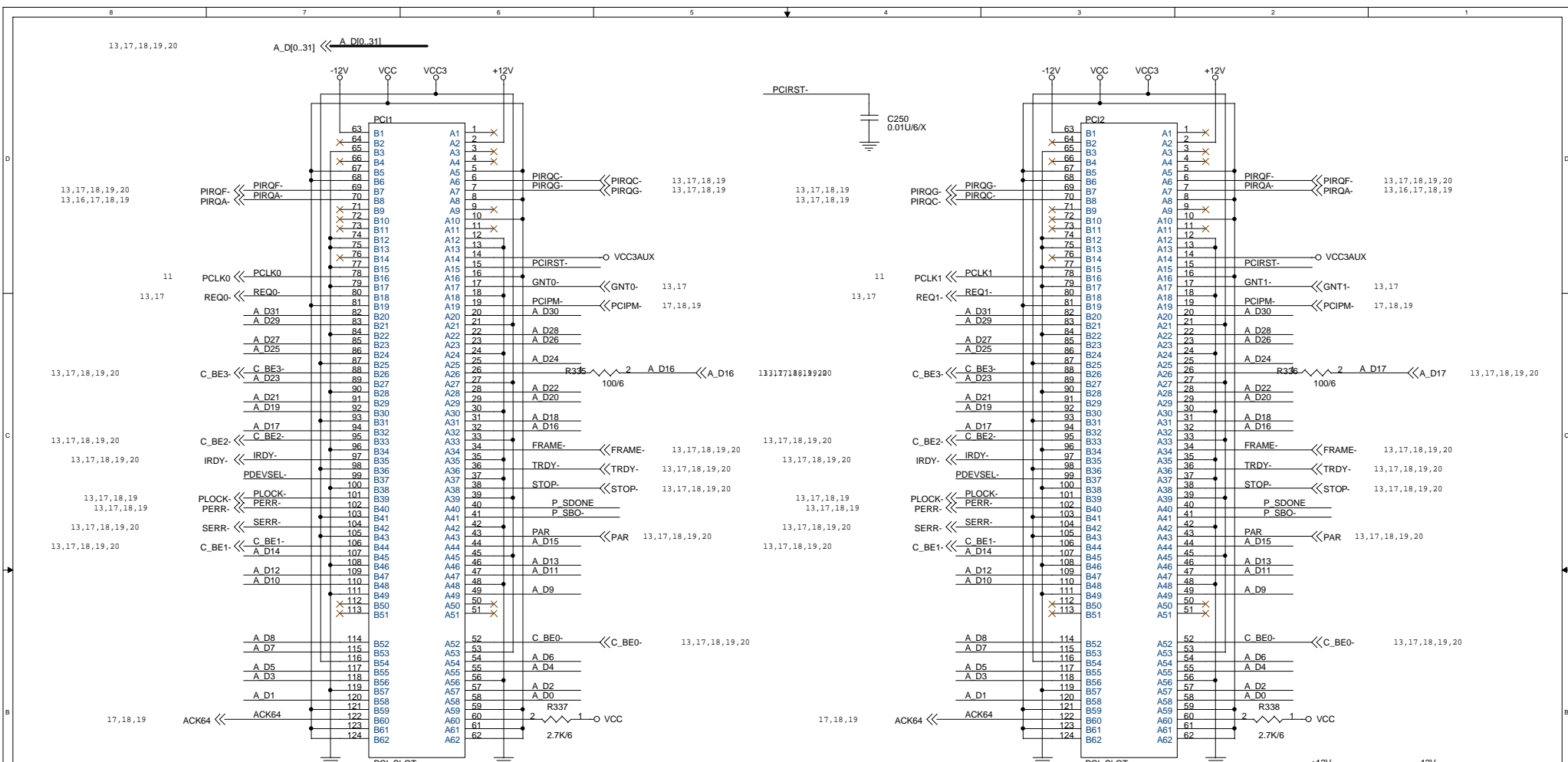


GIGABYTE CORP.		
Title	ICH 2/3	
Size	Document Number	Rev
B	8TX	1.0
Date:	Wednesday, November 29, 2000	Sheet 14 of 38

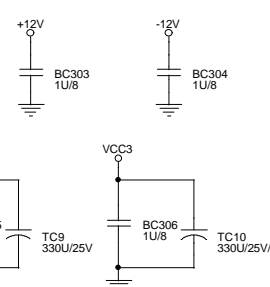
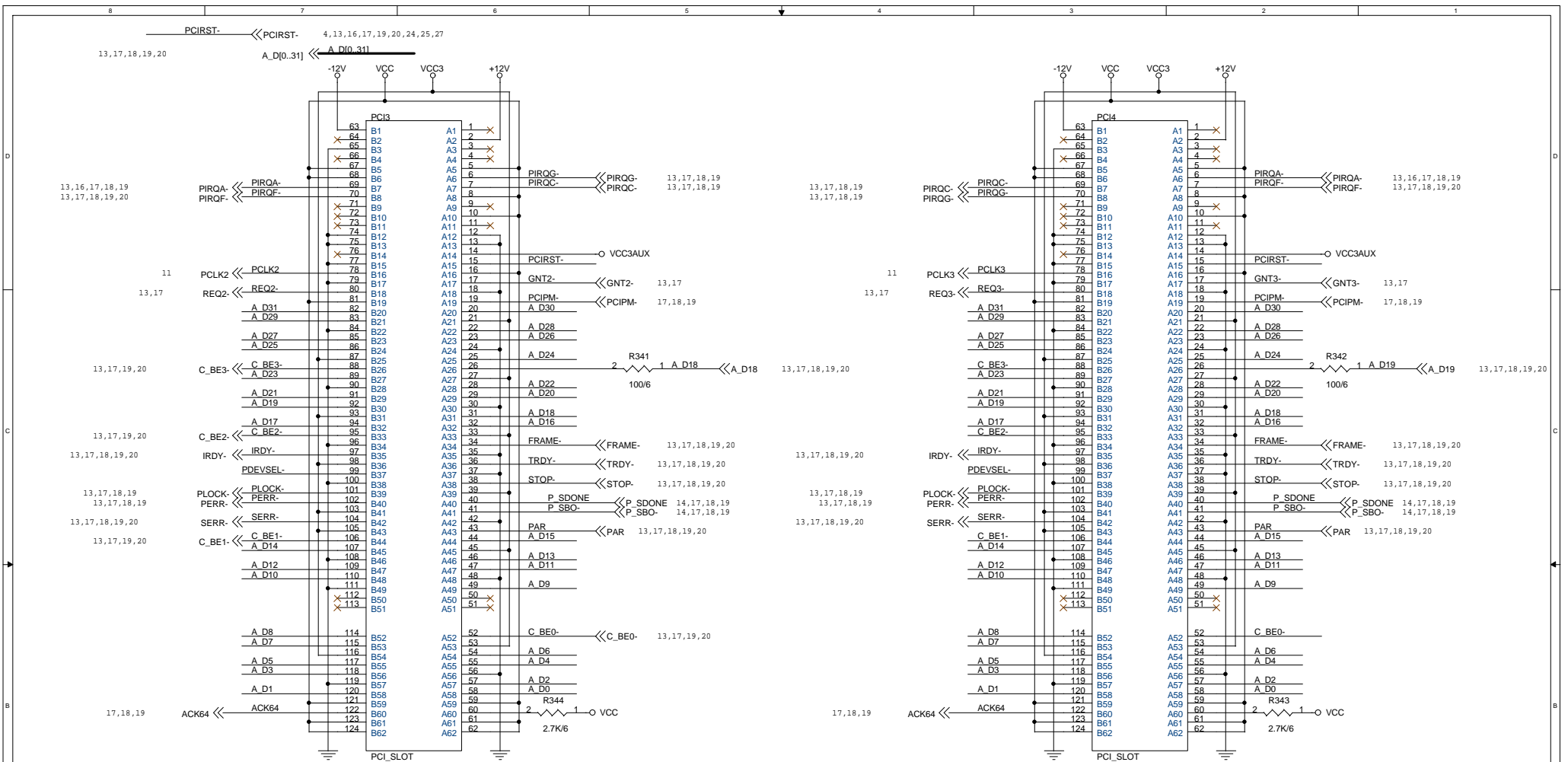




GIGABYTE CORP.		
Title AGP SLOT		
Size B	Document Number	Rev 1.0
Date: Wednesday, November 29, 2000	Sheet 16	of 38

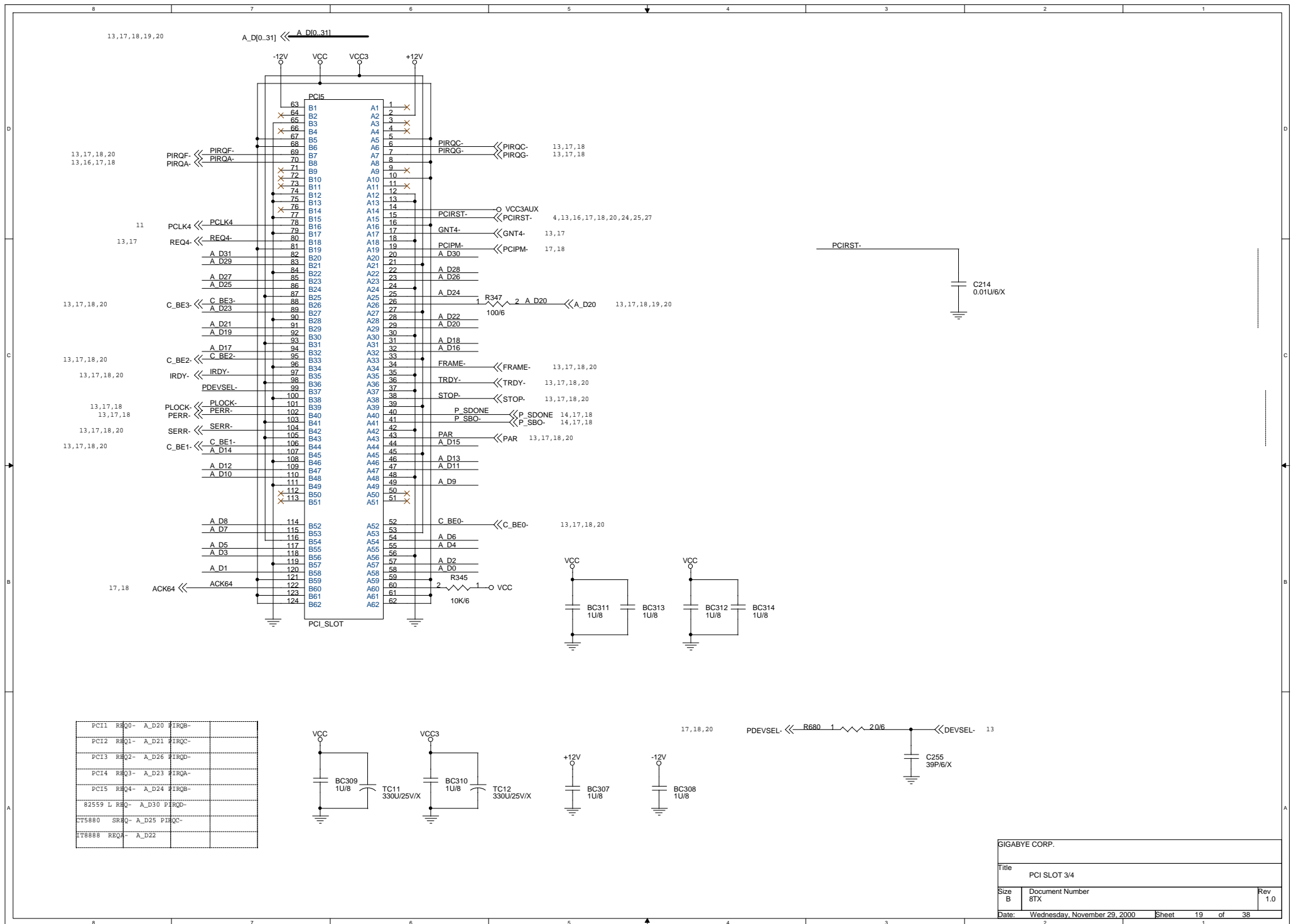


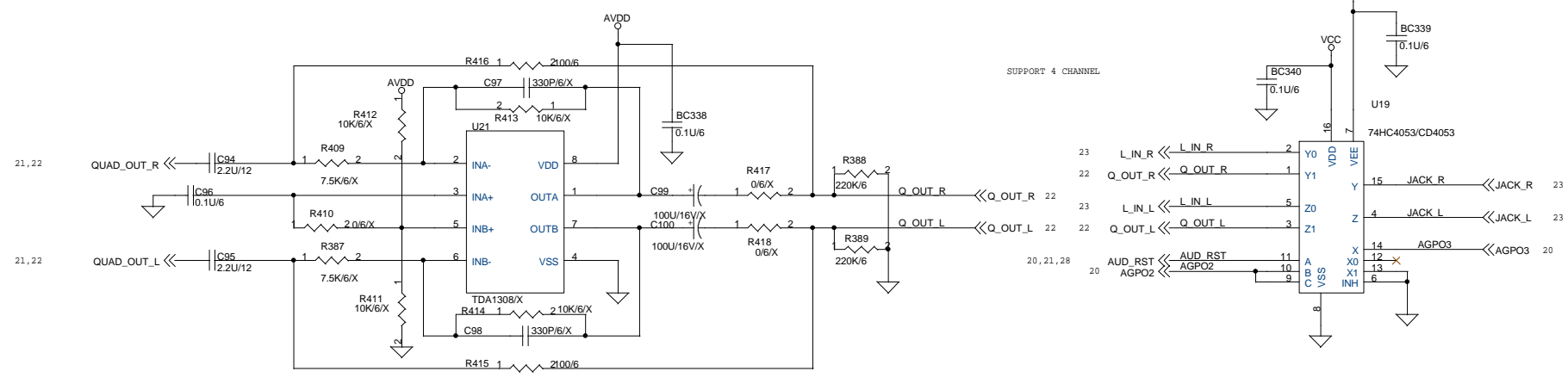
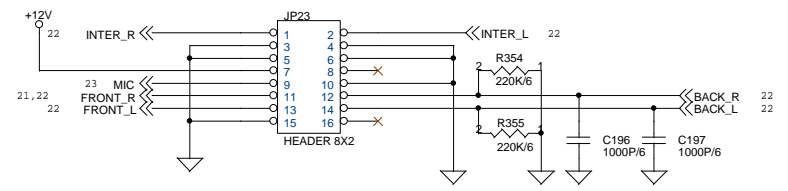
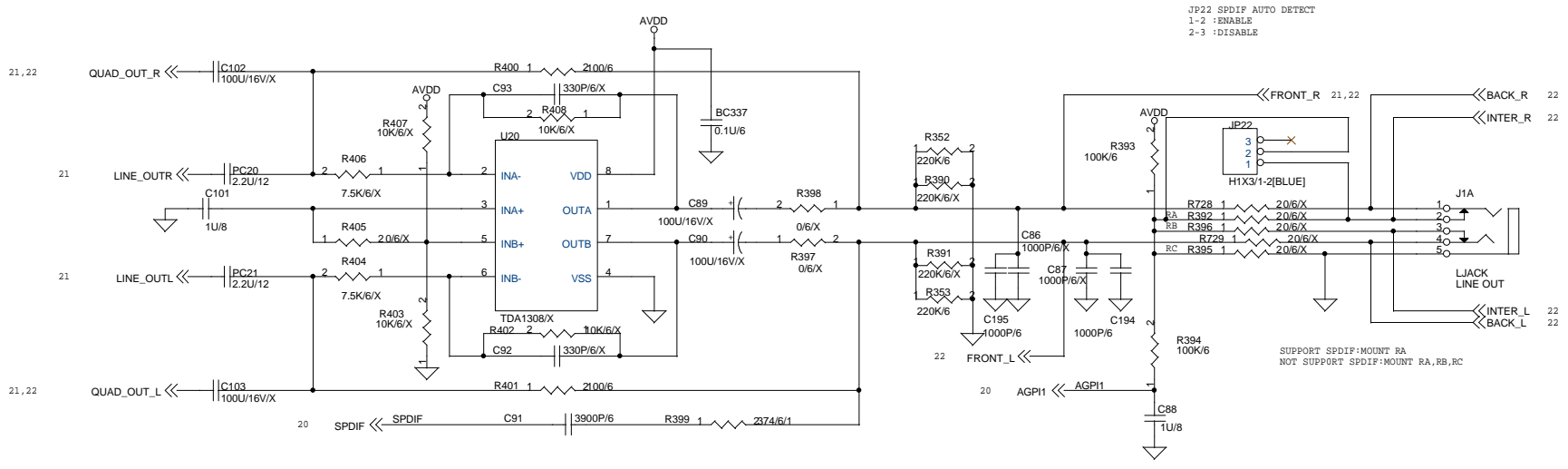
GIGABYTE CORP.		
Title PCI SLOT 1/4		
Size B	Document Number 8TX	Rev 1.0
Date: Wednesday, November 29, 2000	Sheet 17	of 38



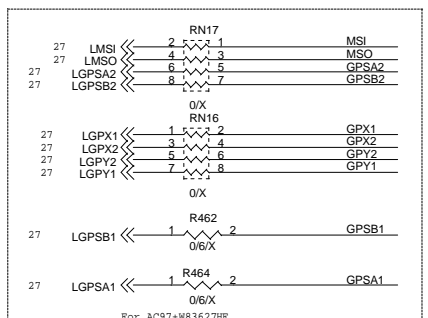
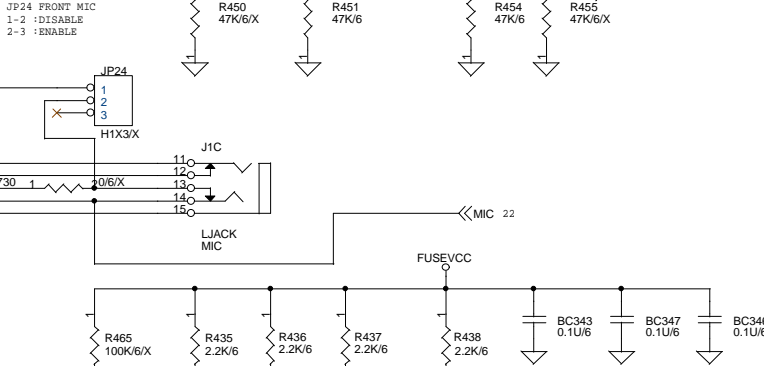
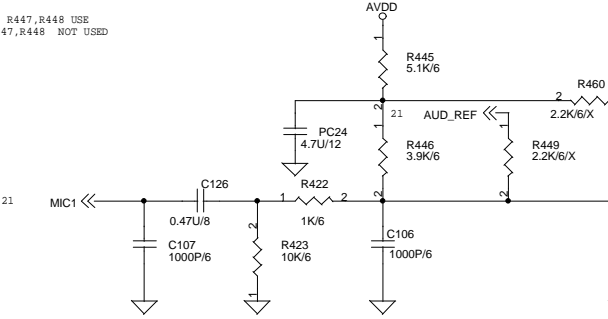
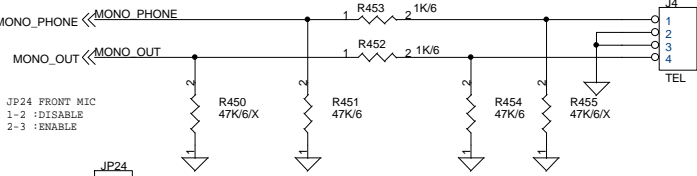
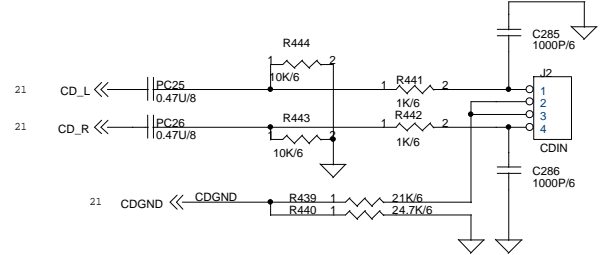
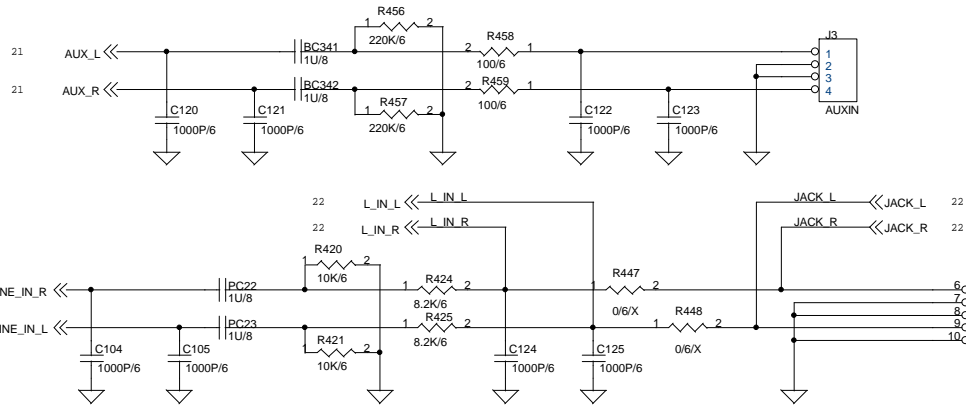
17, 19, 20 PDEVSEL << PDEVSEL >>

GIGABYTE CORP.		
Title PCI SLOT 2/4		
Size B	Document Number 8TX	Rev 1.0
Date: Wednesday, November 29, 2000	Sheet 18	of 38

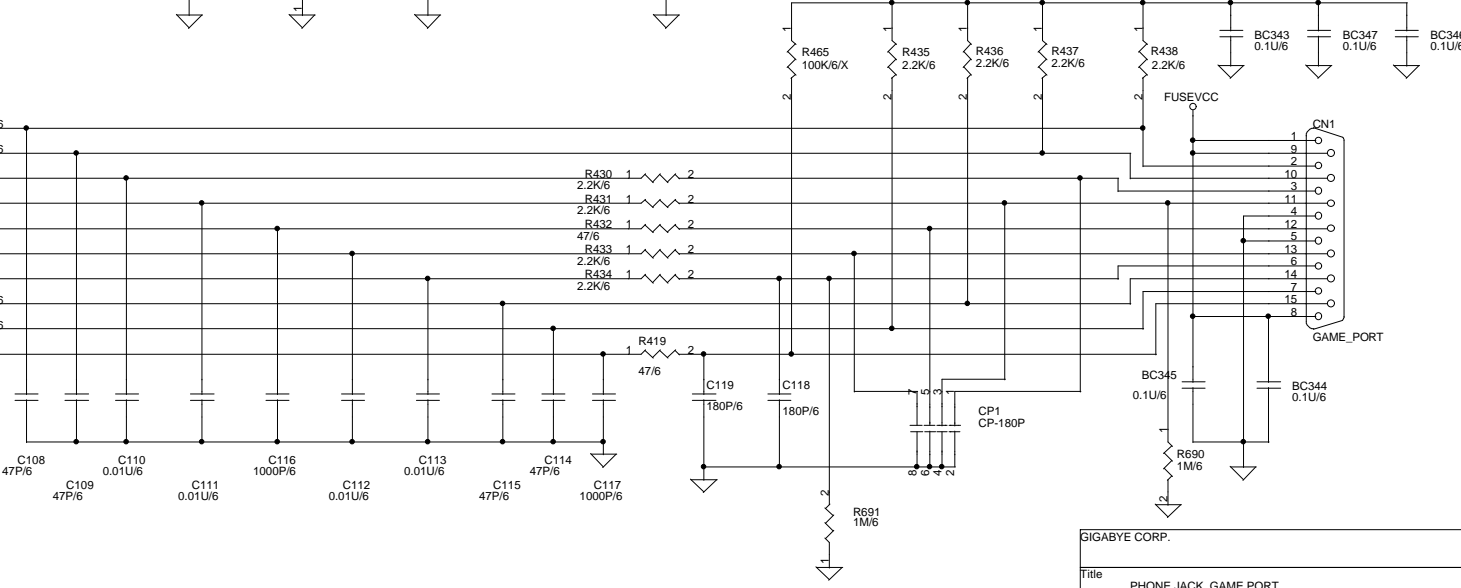
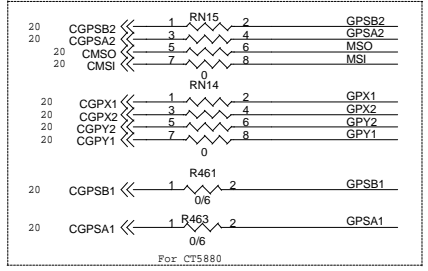
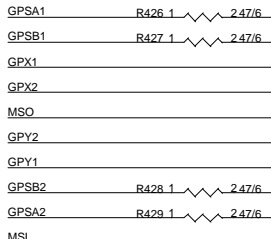




GIGABYTE CORP.		
Title: L JACK LINE OUT		
Size B	Document Number	Rev 1.0
Date: Wednesday, November 29, 2000	Sheet 22	of 38

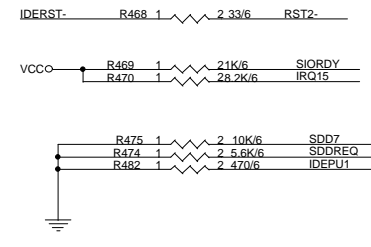
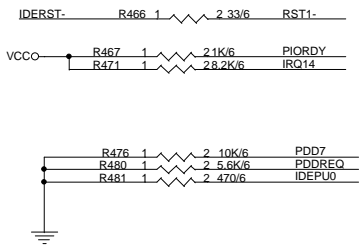
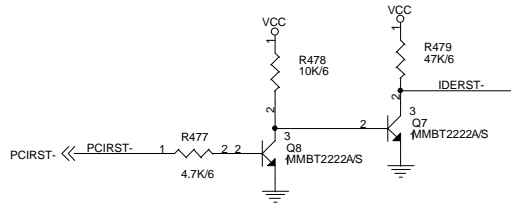


NORMAL: R447, R448 USE
 QUAD: R447, R448 NOT USED



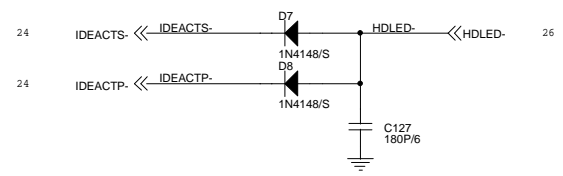
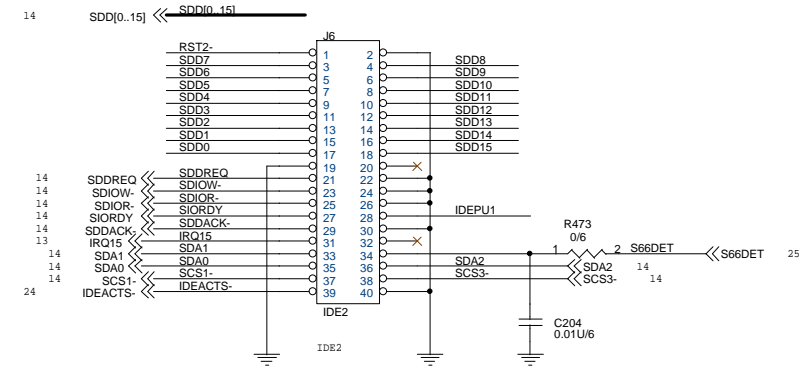
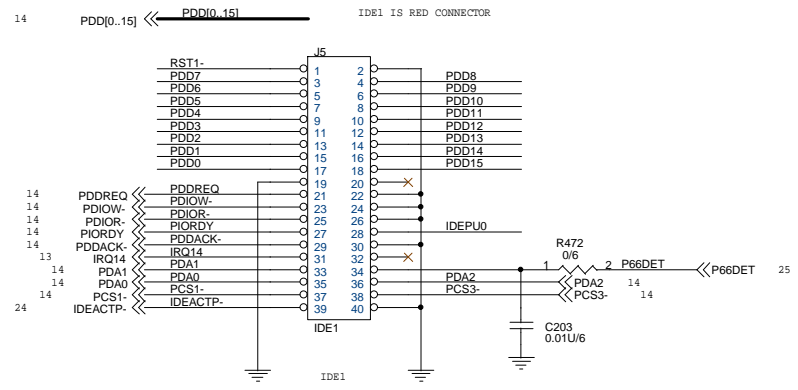
GIGABYTE CORP.		
Title PHONE JACK, GAME PORT		
Size B	Document Number 8TX	Rev 1.0
Date: Wednesday, November 29, 2000	Sheet 23	of 38

4, 13, 16, 17, 18, 19, 20, 25, 27

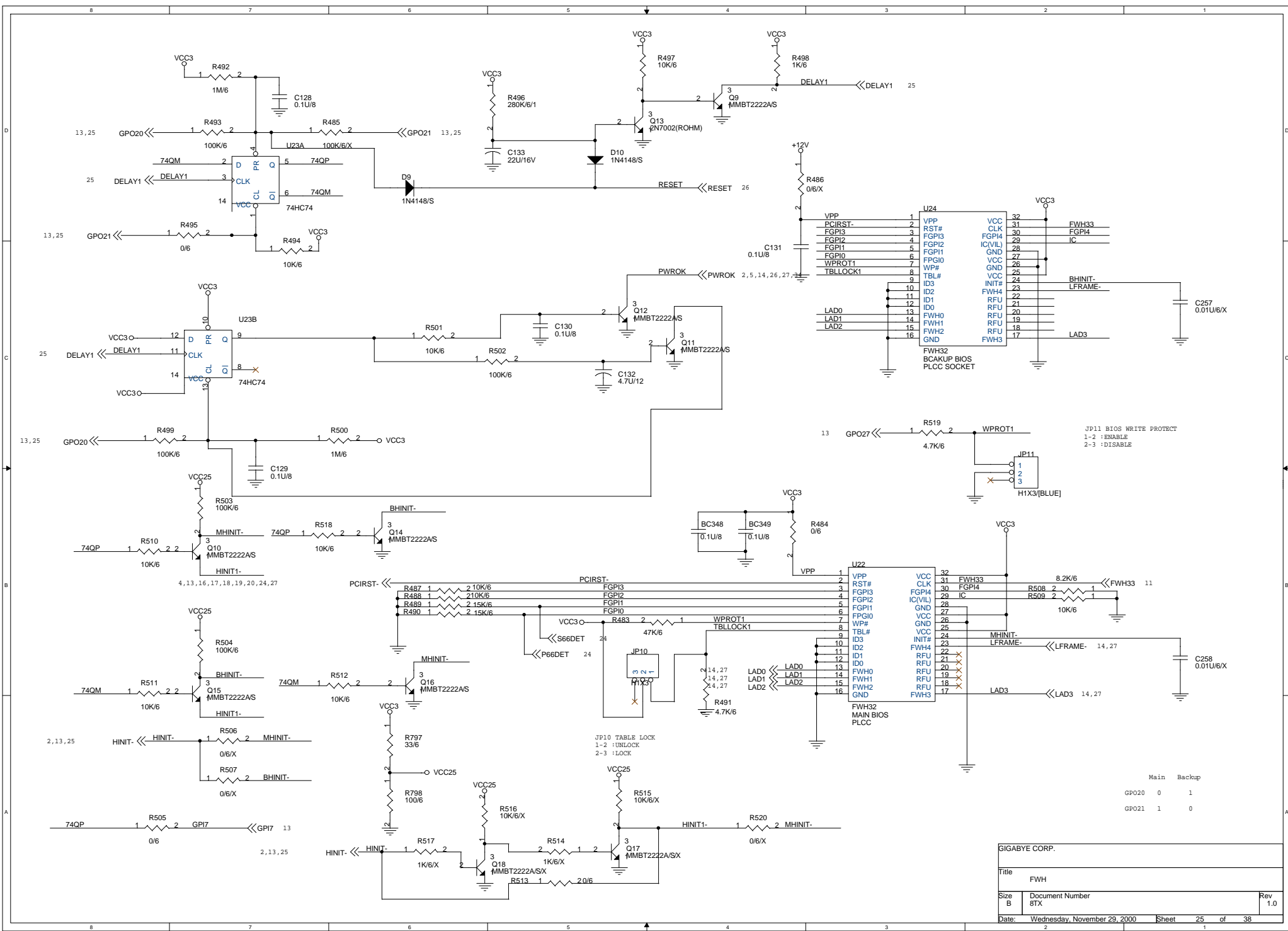


PRIMARY IDE CONNECTOR

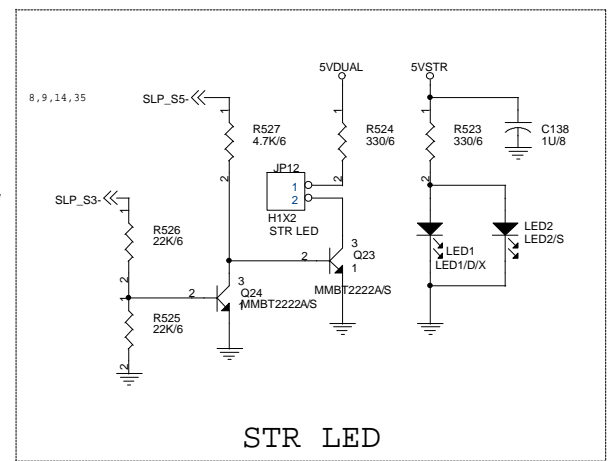
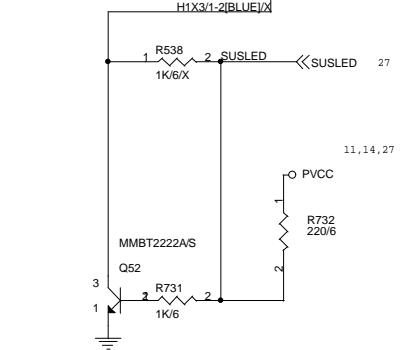
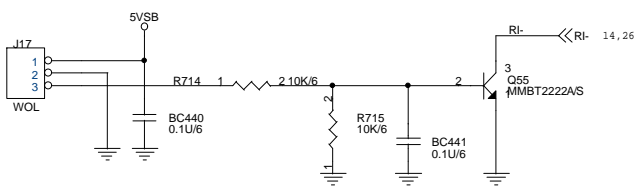
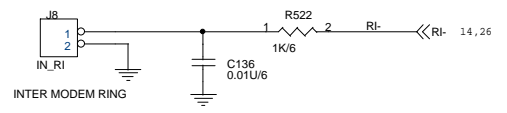
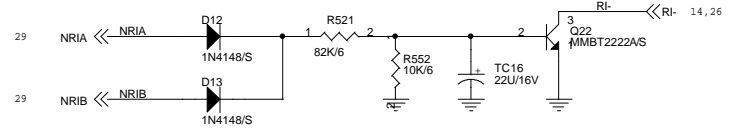
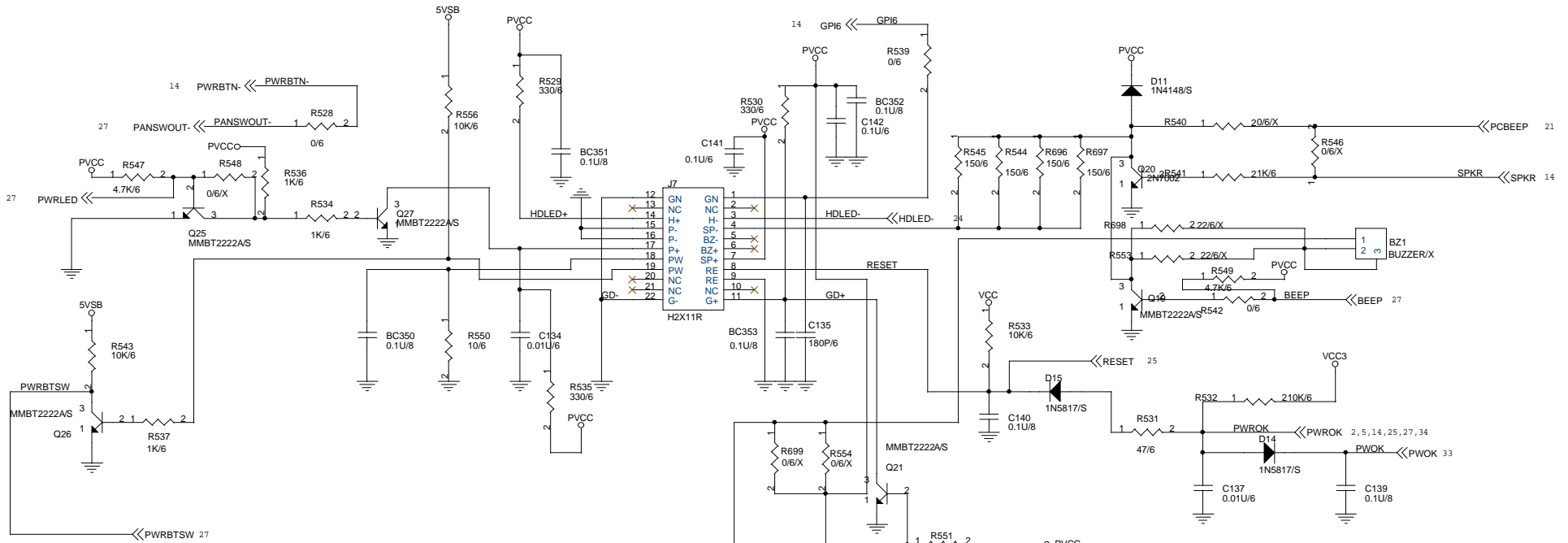
SECONDARY IDE CONNECTOR



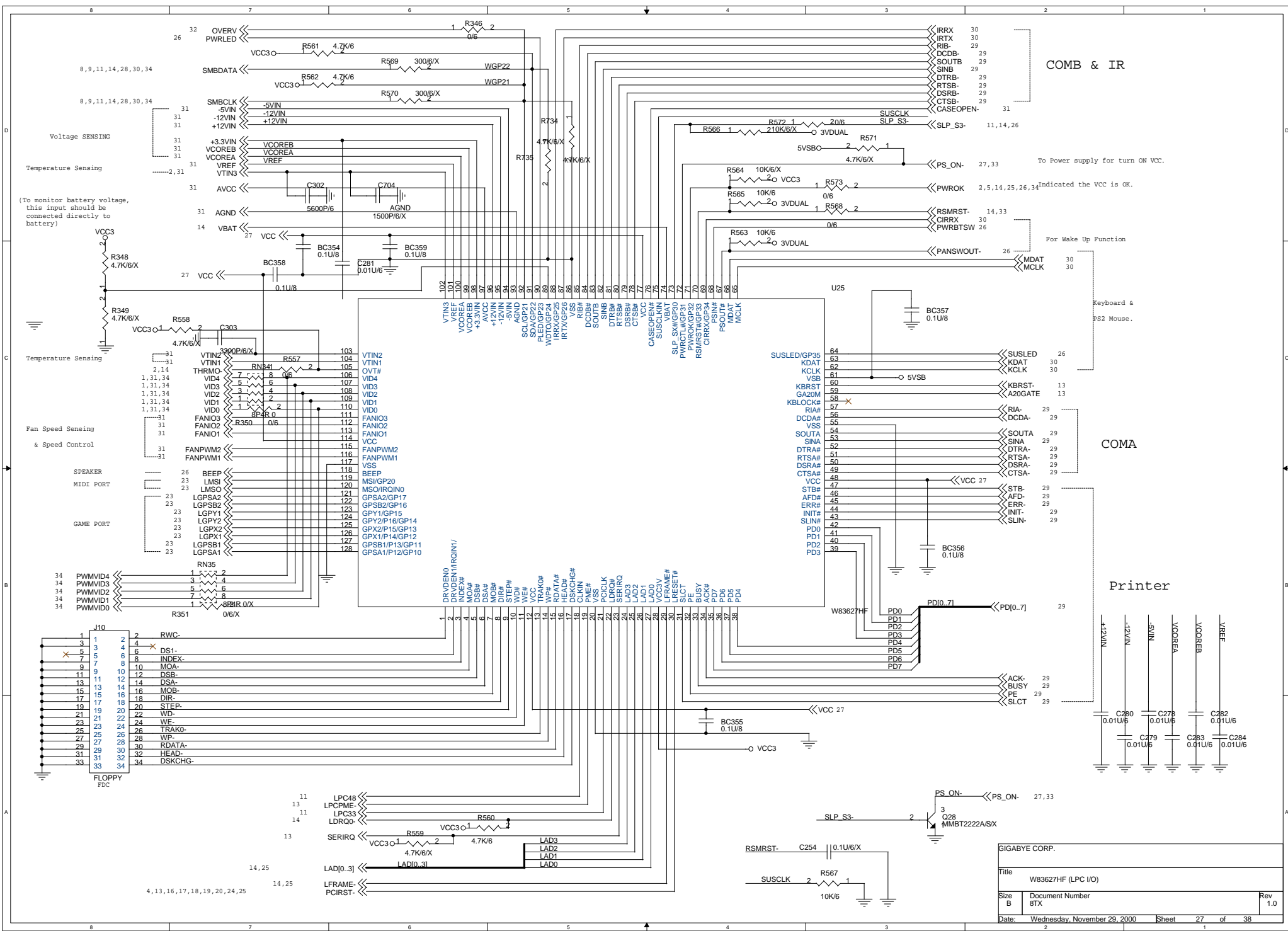
GIGABYTE CORP.		
Title IDE CONNECTOR		
Size B	Document Number 8TX	Rev 1.0
Date: Wednesday, November 29, 2000	Sheet 24	of 38



	Main	Backup
GP020	0	1
GP021	1	0

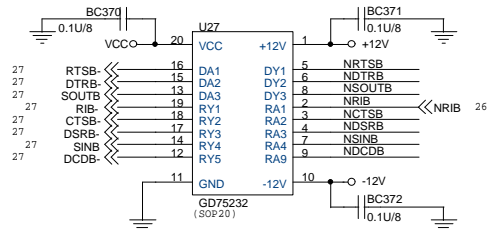
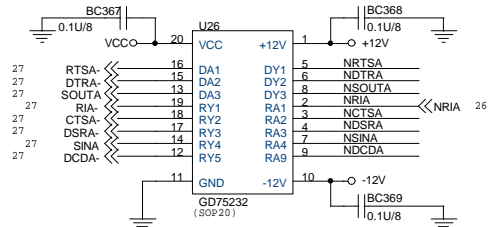


GIGABYTE CORP.		
Title PANEL_FAN		
Size B	Document Number 8TX	Rev 1.0
Date: Wednesday, November 29, 2000	Sheet 26	of 38

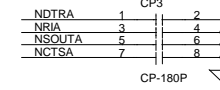
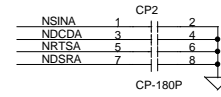
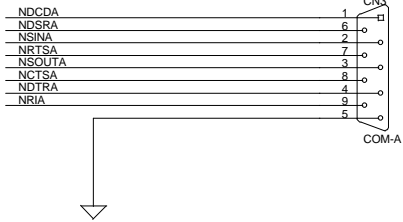


GIGABYTE CORP.		
Title: W83627HF (LPC I/O)		
Size: B	Document Number: 8TX	Rev: 1.0
Date: Wednesday, November 29, 2000	Sheet: 27	of: 38

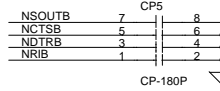
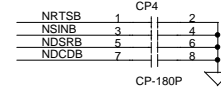
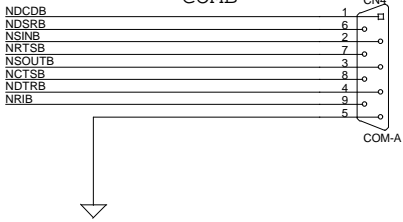
COM PORT



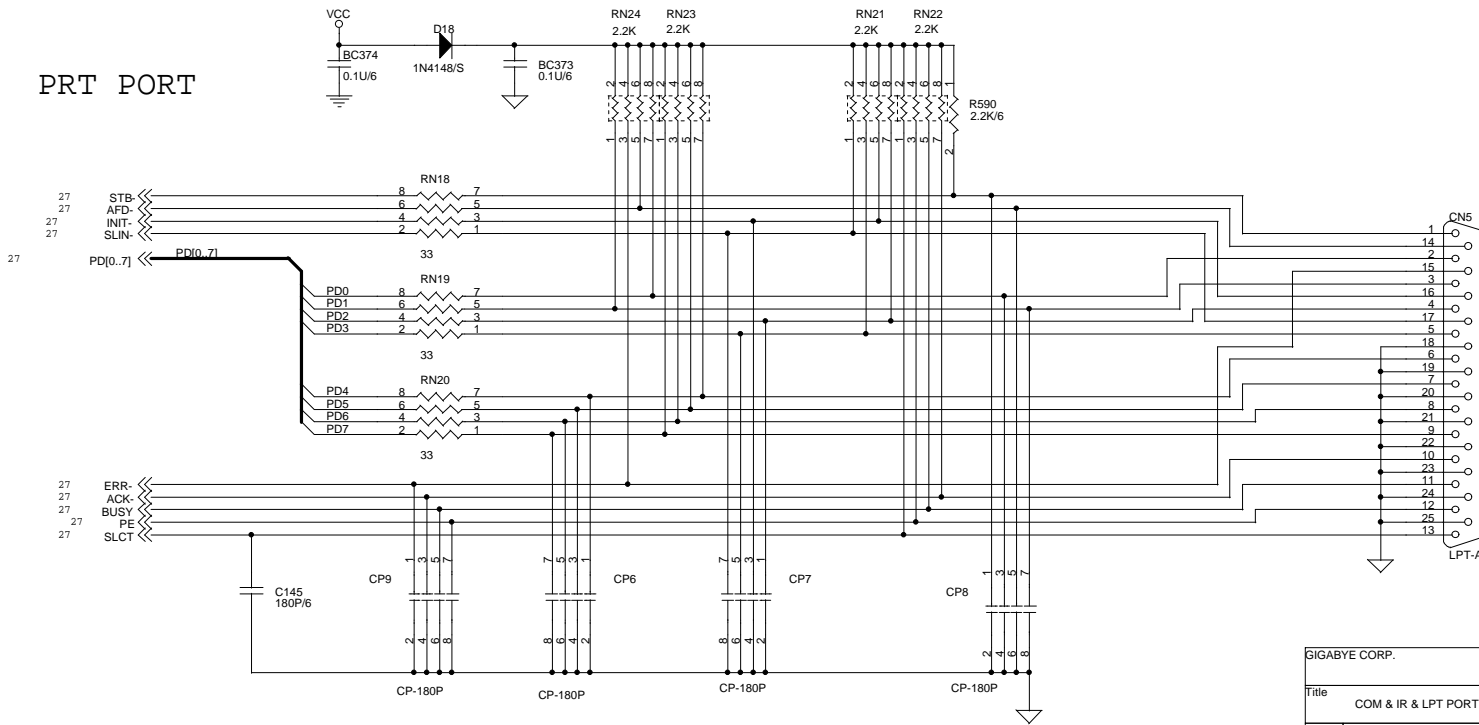
COMA (UARTA)



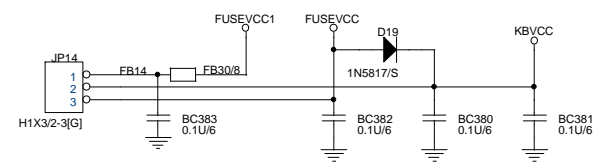
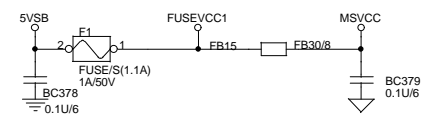
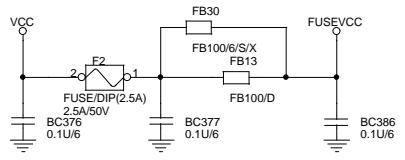
COMB



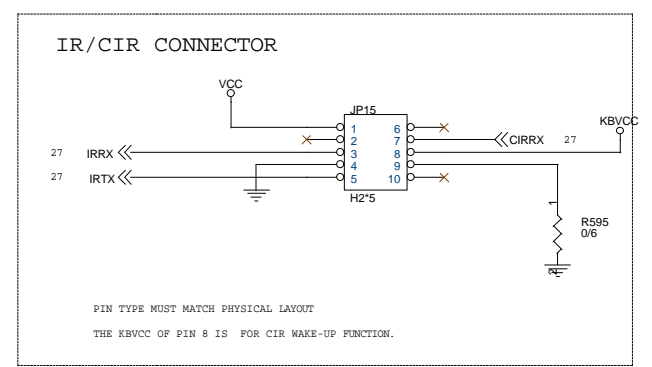
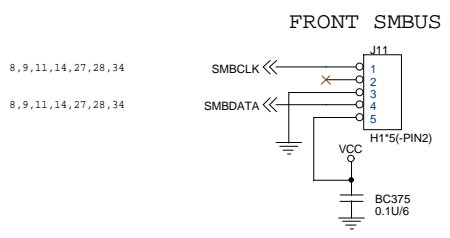
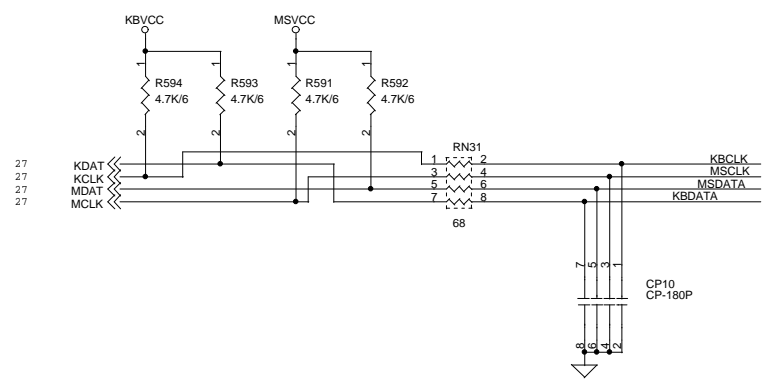
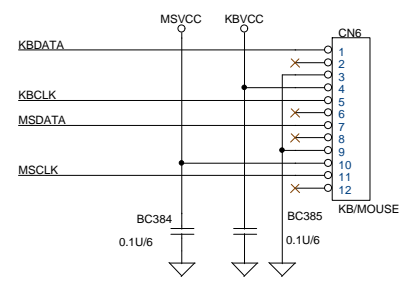
PRT PORT



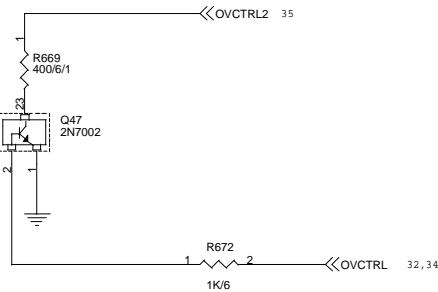
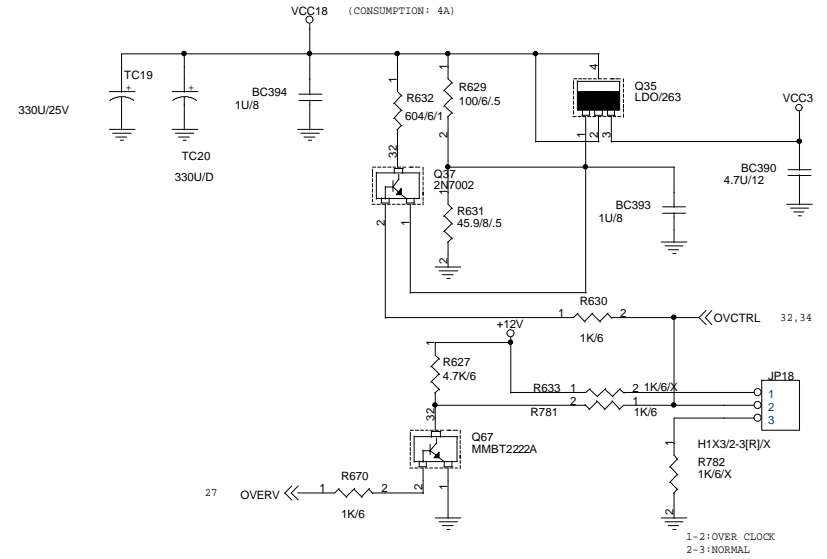
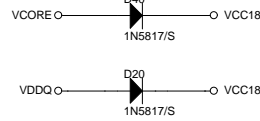
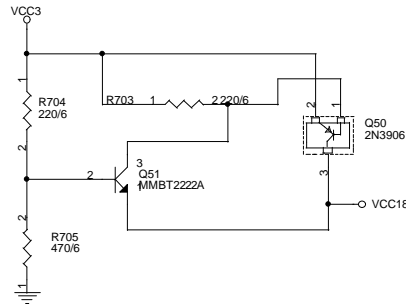
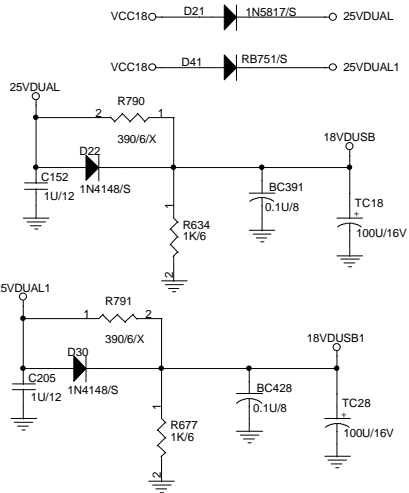
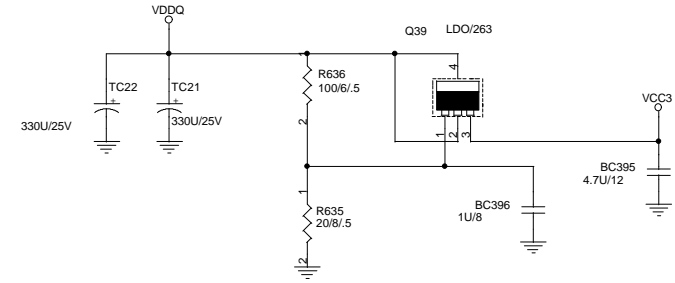
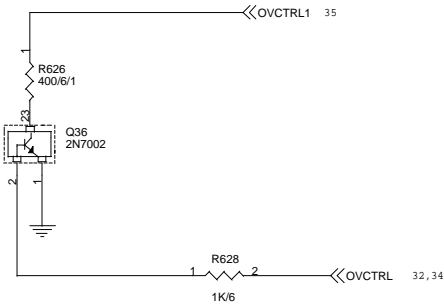
GIGABYTE CORP.		
Title COM & IR & LPT PORT		
Size B	Document Number 8TX	Rev 1.0
Date: Wednesday, November 29, 2000	Sheet 29	of 38



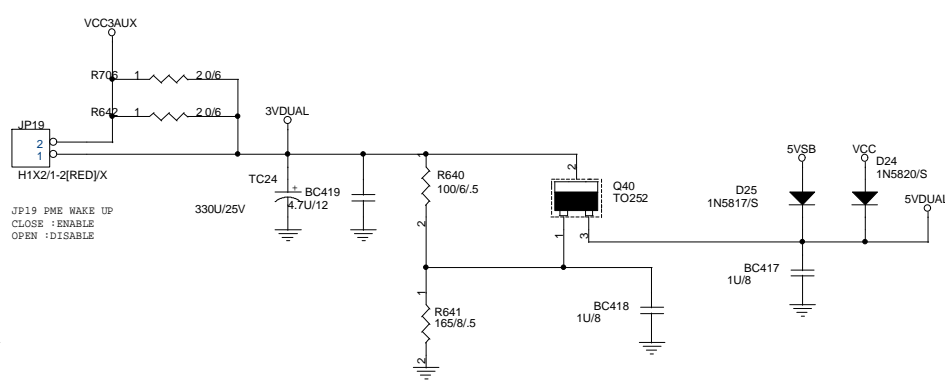
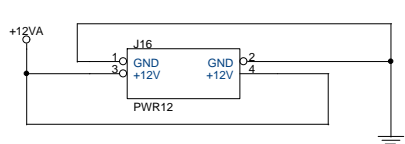
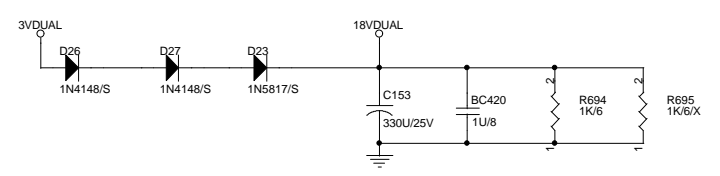
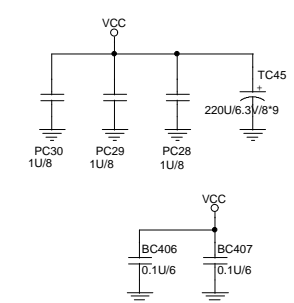
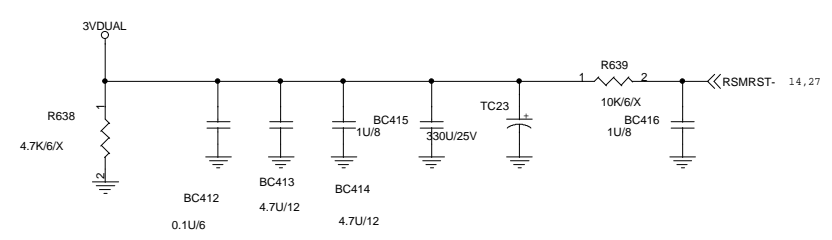
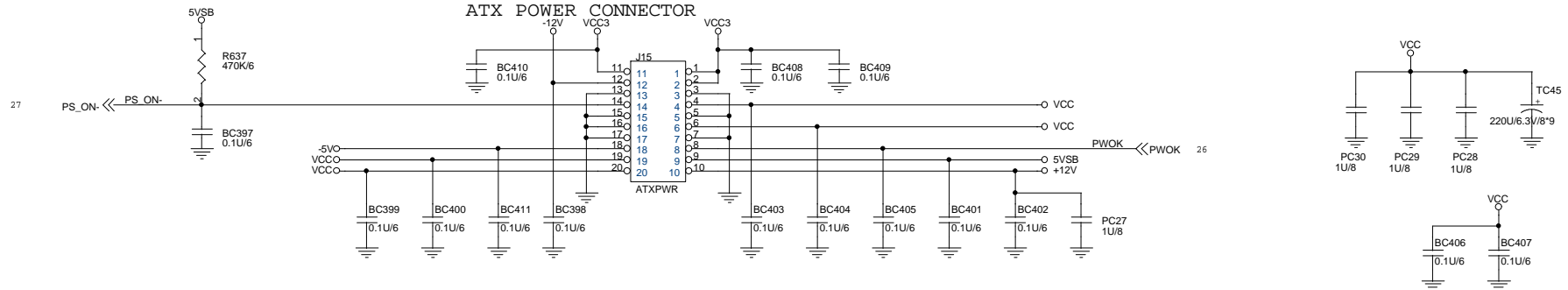
JP14 KB POWER ON
 1-2 : ENABLE
 2-3 : DISABLE



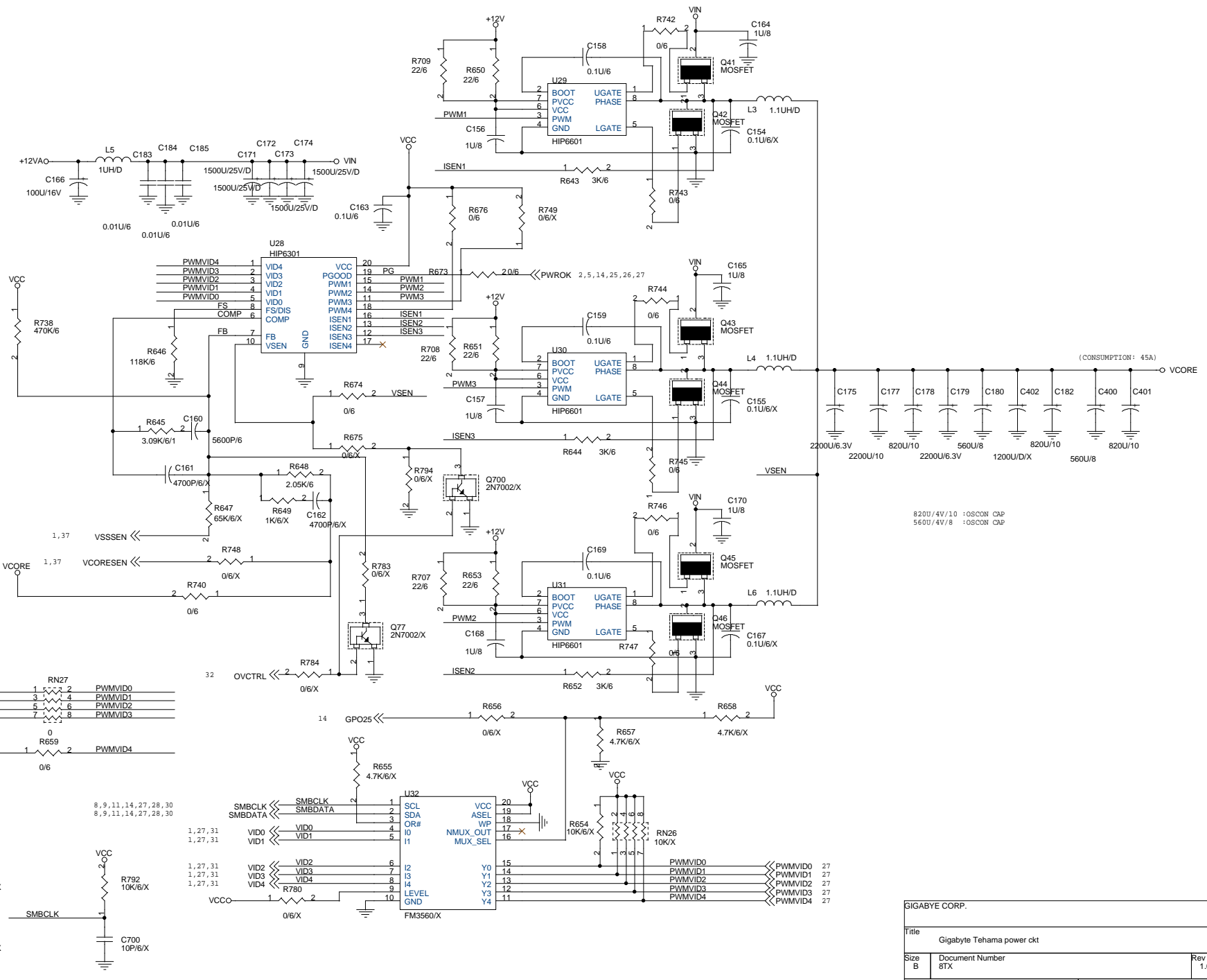
GIGABYTE CORP.			
Title KB & PS2 MOUSE & IR			
Size B	Document Number 8TX	Rev 1.0	
Date: Wednesday, November 29, 2000	Sheet 30	of 38	



GIGABYTE CORP.		
Title PWM_REGULATOR		
Size B	Document Number 8TX	Rev 1.0
Date: Wednesday, November 29, 2000	Sheet 32	of 38



GIGABYTE			
Title ATX,AUDIO/MODEM RISER			
Size B	Document Number 8TX		Rev 1.0
Date:	Wednesday, November 29, 2000	Sheet	33 of 38

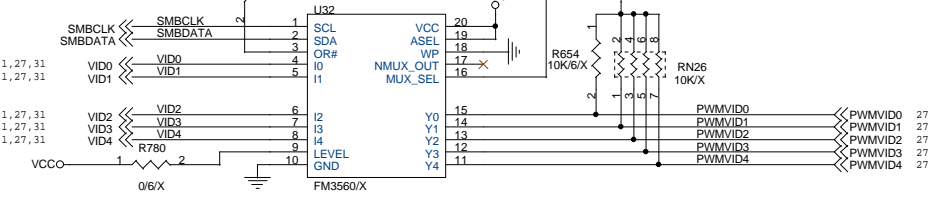
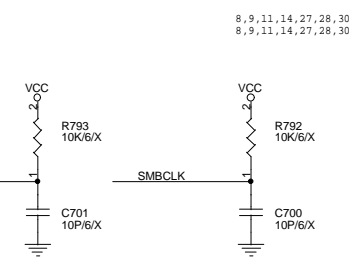
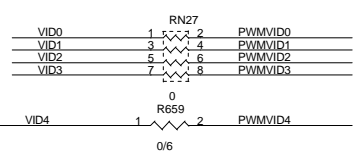


(CONSUMPTION: 45A)

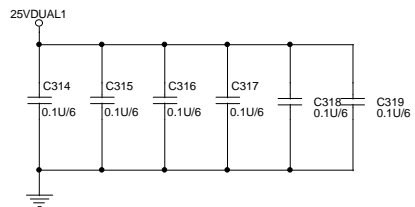
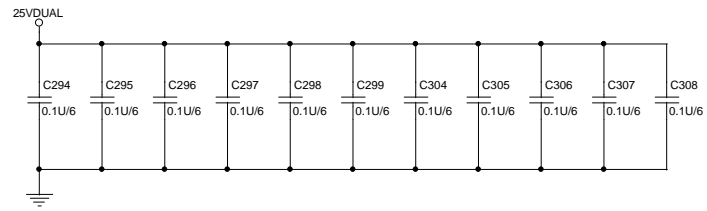
Vcore

2200U/6.3V
2200U/10
820U/10
2200U/6.3V
560U/8
1200U/DIX
820U/10
560U/8

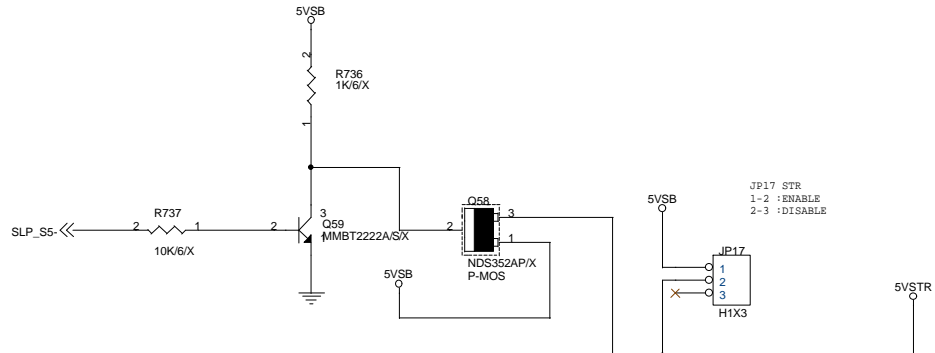
820U/4V/10 : OSCON CAP
560U/4V/8 : OSCON CAP



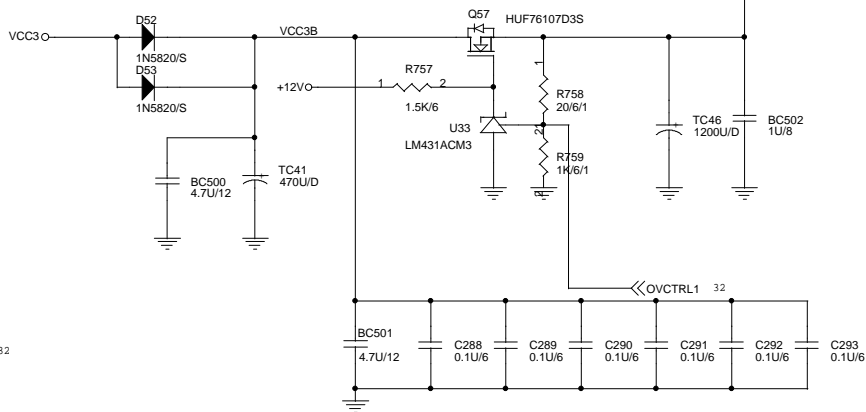
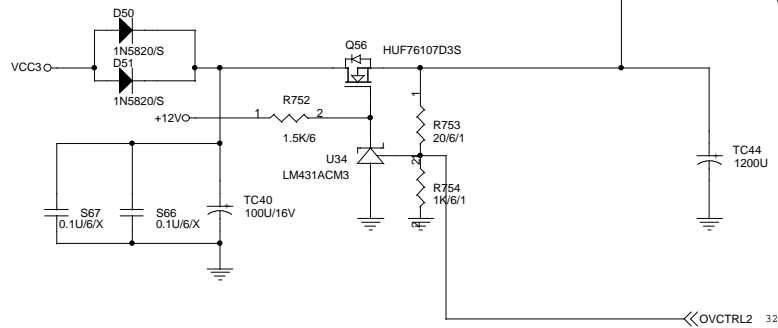
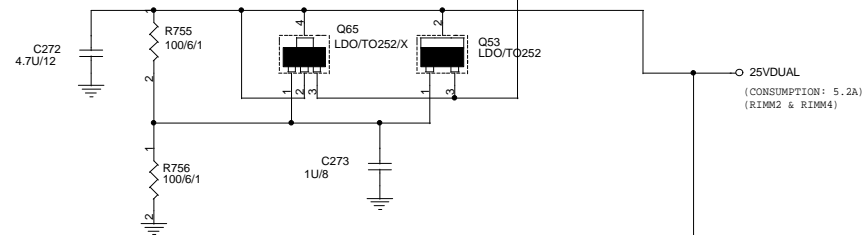
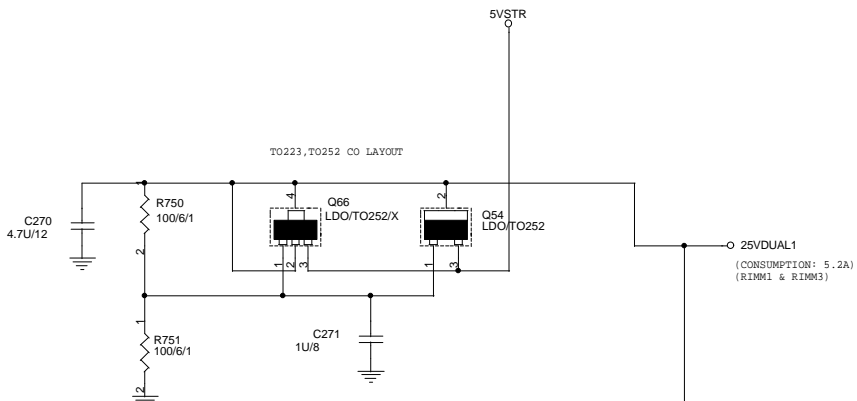
GIGABYTE CORP.		
Title Gigabyte Tehama power ckt		
Size B	Document Number 8TX	Rev 1.0
Date: Wednesday, November 29, 2000	Sheet 34	of 38

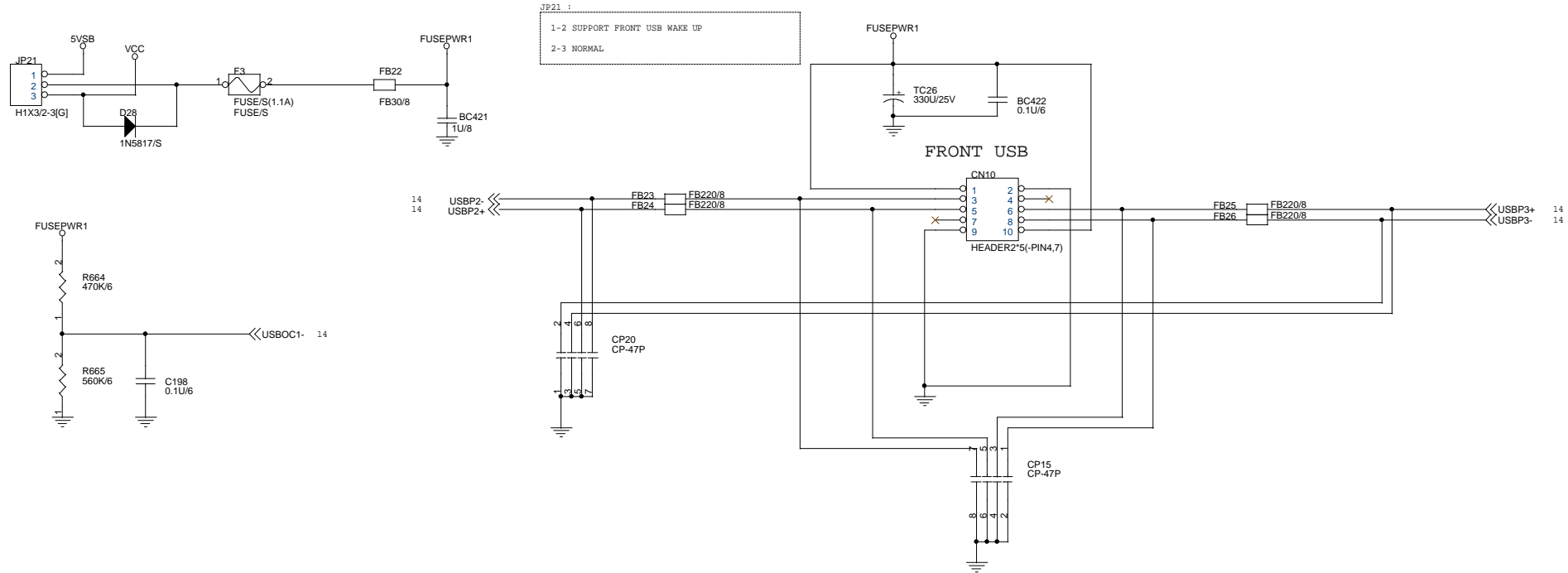


8, 9, 14, 26

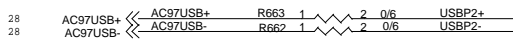
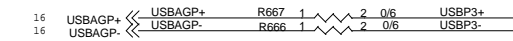
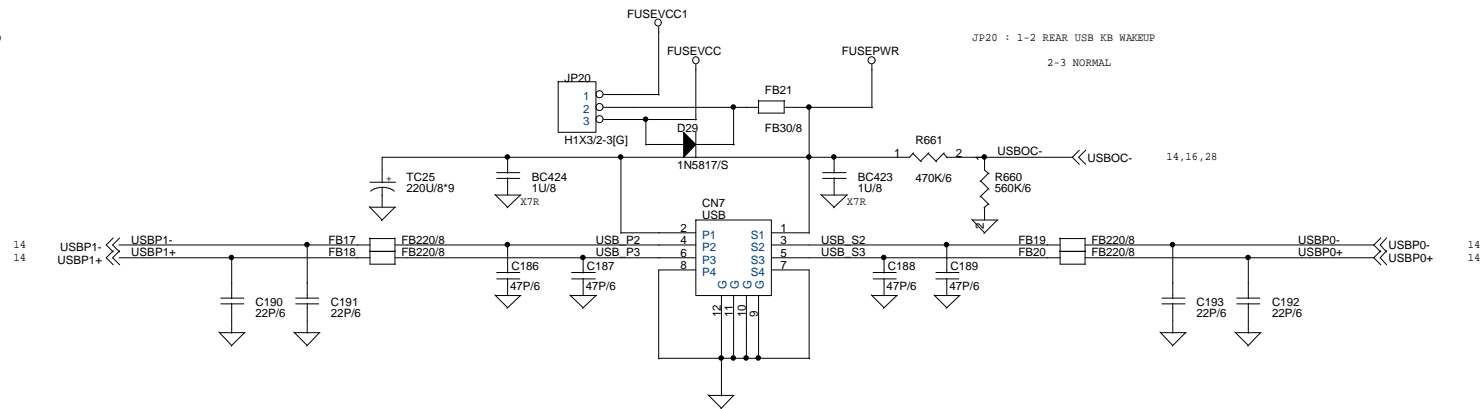


TO223, TO252 CO LAYOUT

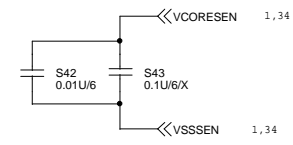
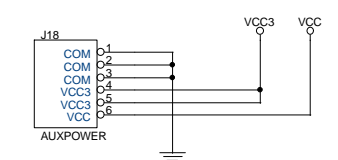
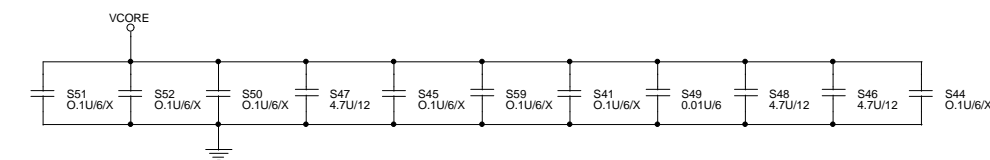
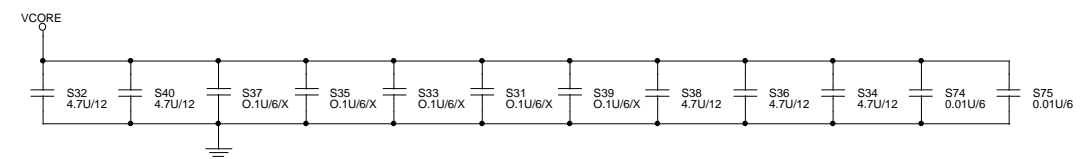
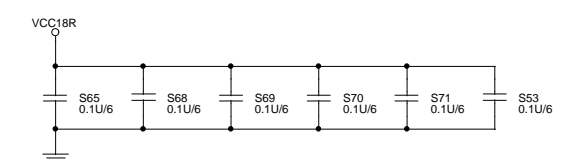
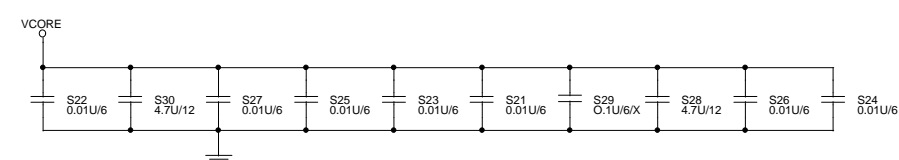
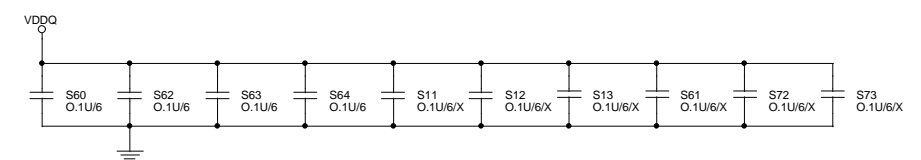
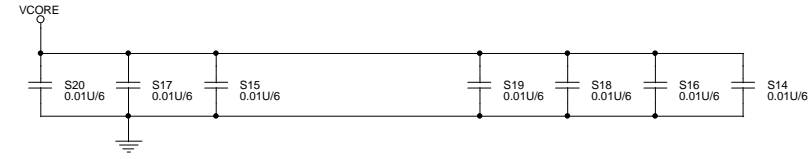
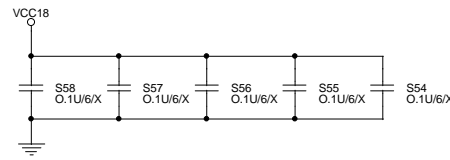
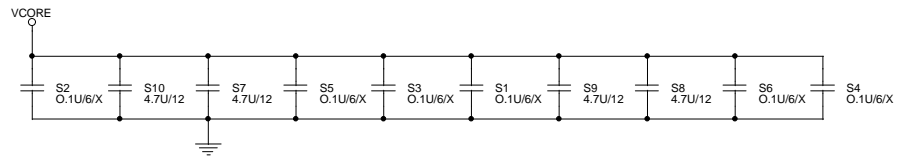




USB



GIGABYTE CORP.		
Title USB PORT		
Size B	Document Number 8TX	Rev 1.0
Date: Wednesday, November 29, 2000	Sheet 36	of 38



GIGABYTE CORP.		
Title Back capacitor		
Size B	Document Number 8TX	Rev 1.0
Date: Wednesday, November 29, 2000	Sheet 37	of 38

8TX HISTORY

0.1-->0.2

- 1.HR2 CHANGE TO 0805 SIZE
- 2.TC27 CHANGE TO 330U/25V, TC28 CHANGE TO 220U(8*9)
- 3.PLACE TC6 TEXT ON PCB
- 4.TC5 CHANGE TO 220U/6*7

GIGABYTE CORP.			
Title			
8TX HISTORY			
Size	Document Number	Rev	
B	8TX	1.0	
Date:	Wednesday, November 29, 2000	Sheet	38 of 38