



## Replacing Apple Time Capsule HDD

### Tools used in this guide

- [Heat gun or hair dryer](#)
- [Phillips #00 Screwdriver](#)
- [Spudger](#)

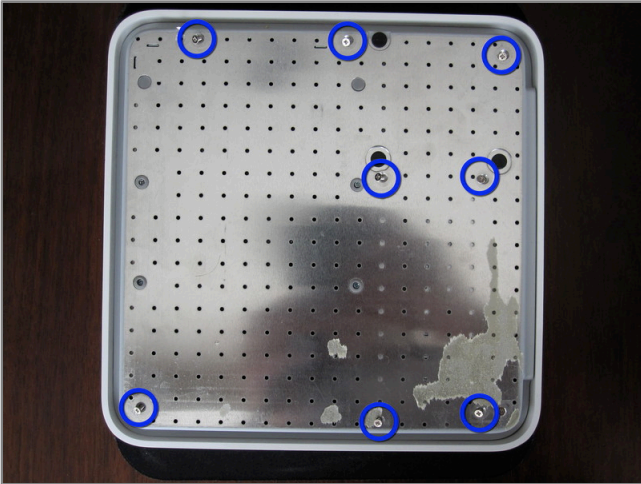
### Parts relevant to this guide

- [Hard Drive SATA](#)



### *Step 1 - disassembly Lower Case*

- Place the unit bottom up on your work surface. Use a cloth or similar to protect it from scratches.
- Use a heat gun, hair dryer or similar in order to weaken the adhesives in the tape that hold it in place.
  - Start in a corner, it can be tricky to get a good grip at first.
  - Progress slowly not to tear the tape, but do not over heat the unit.
  - You will tear some of the tape, don't worry to much about it. It will still hold in place.



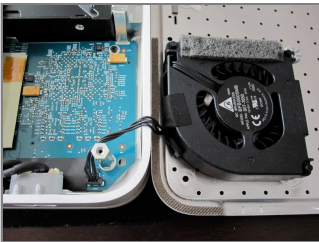
## Step 2

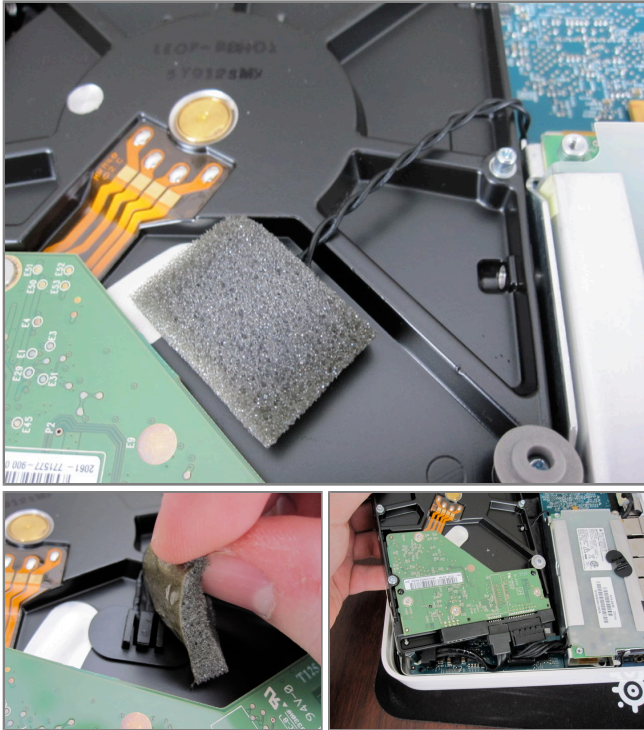
- Using a Phillips #00 screwdriver undo the 8 screws shown with blue.



## Step 3

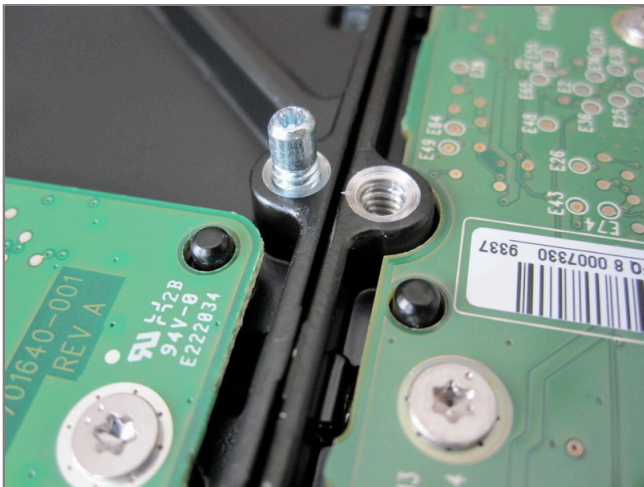
- With the ethernet connectors facing you carefully open the unit like on the picture. I can best describe the opening technique as you would open a book from the rear cover.
- Unplug the fan, a spudger can be of good use here.
  - Unless you are replacing or working on the fan you don't need to unplug it.
- The fan is connected to the motherboard next to the power connector. Don't lift the plate straight up or use force.





## Step 4 - Hard Drive

- On the HDD itself there is a heat sensor.
- Carefully peel the foam off. Be gentle with the foam, since you will need to reuse it to connect the heat sensor to the new HDD.
- Lift the HDD out carefully, and disconnect the cables.
- Replace the heat sensor in about the same position on your new HDD.



## Step 5

- Using the Phillips #00, transfer the four spacers to your new HDD.
- If you find that the HDD is a bit loose, you can undo the spacers a little through the holes in the plate (you know, the screws you weren't supposed to touch in step two).
- HDD tip: I recommend using a HDD with variable RPM due to heat and power savings. The price bump might cost more than it tastes thou, research the prices is your area.
- Be sure to format your new HDD from the Airport tools when you are done and the Time Capsule is reassembled.
- It is possible to test run the unit before it is fully reassembled. However I do not recommend it due to the risk of over heating or you getting an electrical shock from the device if you are not careful.

