



Installing iPhone 3G Display

Tools used in this guide

- [Metal Spudger](#)
- [Phillips #00 Screwdriver](#)
- [Spudger](#)

Parts relevant to this guide

- [iPhone 3G Display](#)
- [iPhone 3G Front Panel](#)



Step 1 - Display

- × Remove the two Phillips #00 screws from the dock-connector end of the iPhone.



Step 2

- There is a fragile rubber gasket between the silver front bezel and black display assembly. Keep your tool as close to the silver front bezel as possible to prevent damaging the gasket.
- We recommend a metal spudger for this task, but an X-acto knife should also work, just be careful not to slip.
- Insert a metal spudger into the seam between the silver front bezel and the black display assembly on the edge closest to the home button. Gently pry the display assembly up from its bezel.



Step 3

- If necessary, insert the metal spudger in the same manner on the side of the iPhone and continue to pry up gently. Stop using the metal spudger once the display assembly is up enough that you can lift it up with your fingers.



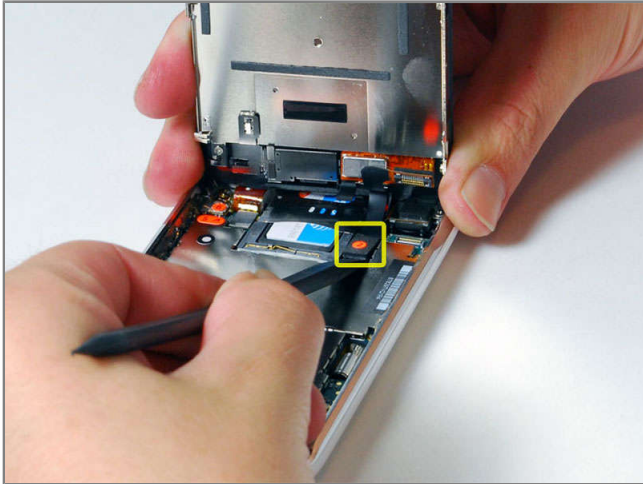
Step 4

- The display assembly is still connected to the iPhone by several cables, so don't try to remove it entirely just yet.
- Rotate the display assembly up until it is at an angle of approximately 45 degrees.



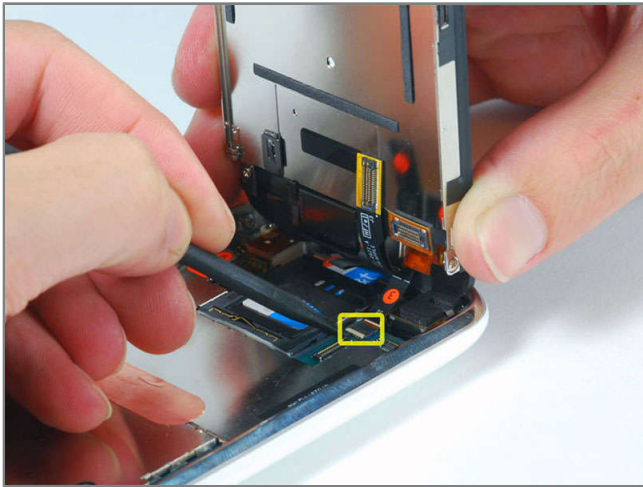
Step 5

- ⇒ Continue to hold the display assembly with one hand, and use your other hand and a spudger to disconnect the black ribbon cable labeled "1."



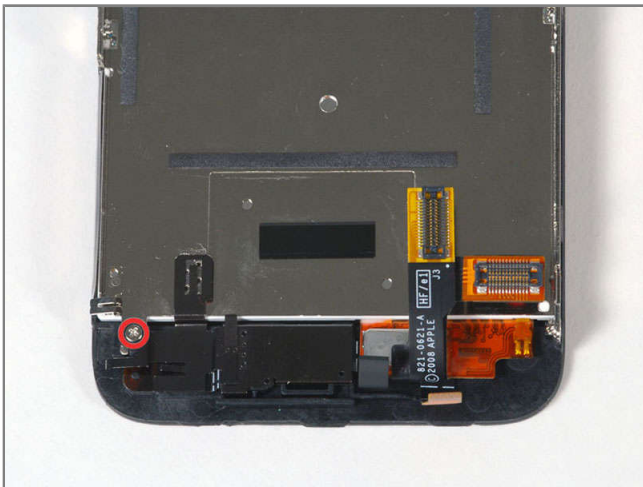
Step 6

- Rotate the display assembly up until it is roughly vertical. This will allow easier access for disconnecting the remaining cables.
- ➔ Use a spudger to disconnect the black ribbon cable labeled "2."



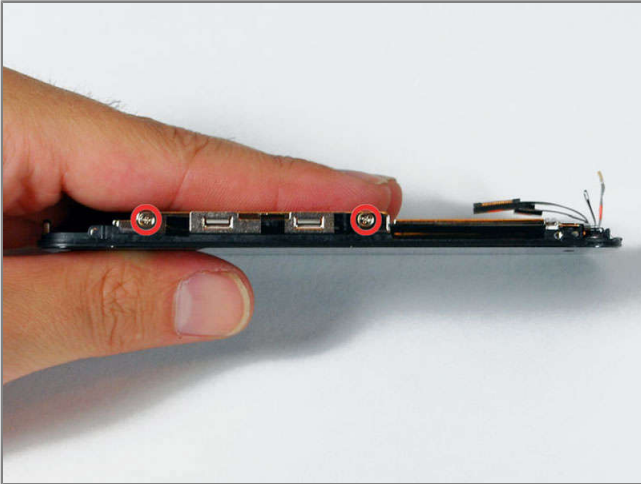
Step 7

- ➔ Use a spudger to flip up the white plastic tab holding the remaining ribbon cable in place. The white tab will rotate up 90 degrees, releasing the ribbon cable.
- Slide the black ribbon cable out of its connector, and remove the display assembly from the iPhone.



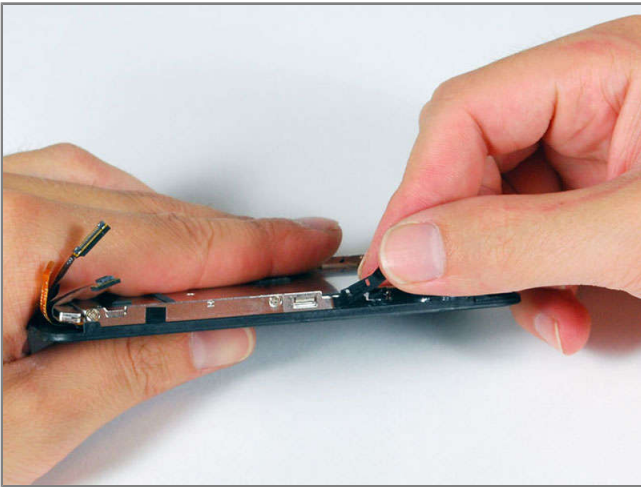
Step 8

- × Remove the single Phillips #00 screw from the corner of the display assembly.



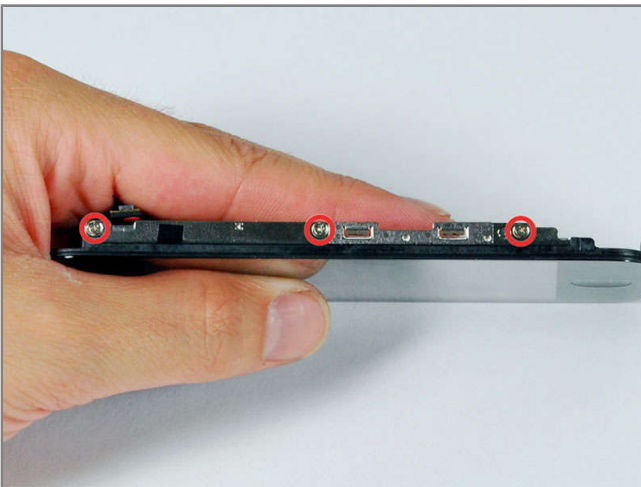
Step 9

× Remove the two Phillips #00 screws from the right side of the display assembly.



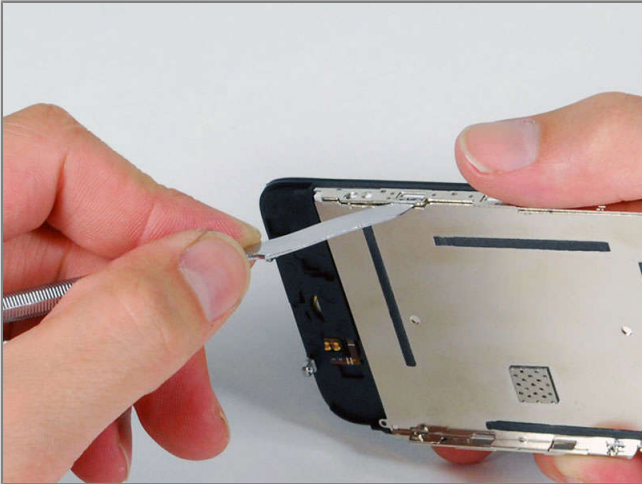
Step 10

- Turn the display over, and carefully peel up the thin strip of black tape on the edge of the display assembly.
- Keeping the tape from sticking to itself can be tricky. We recommend placing the tape on a wax-coated piece of paper (any sticker backing will do).



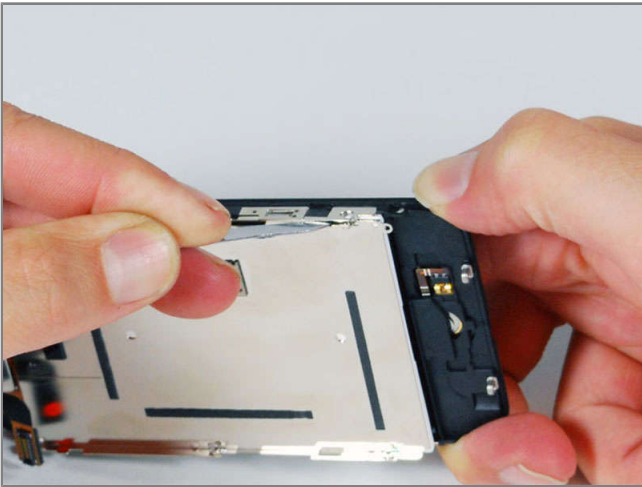
Step 11

× Remove the three Phillips #00 screws from the left side of the display assembly.



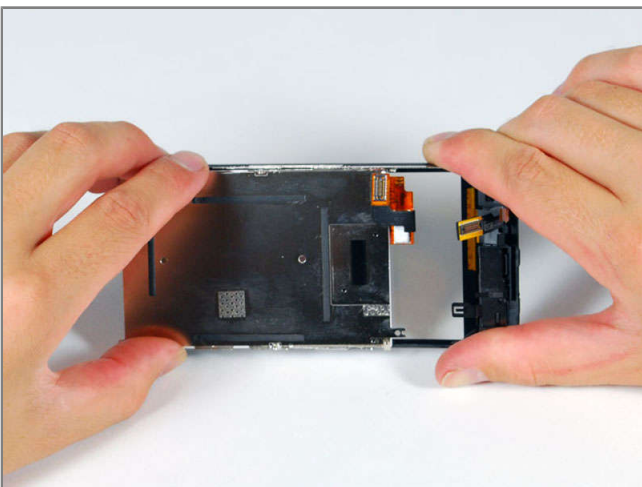
Step 12

- Carefully insert a metal spudger between the two metal rails along the edge of the display assembly. Gently rotate the spudger to lift the LCD up from the glass.



Step 13

- Turn the display assembly over and again carefully insert a metal spudger between the two metal rails along the edge of the display assembly. Gently rotate the spudger to lift the LCD up from the glass.



Step 14

- Separate the LCD and glass by sliding the LCD panel away from the ribbon cables on the glass.