



Power Macintosh G3 Blue and White Teardown

Tools used in this guide

- [Flathead Screwdriver](#)
- [Phillips #0 Screwdriver](#)



Step 1 -

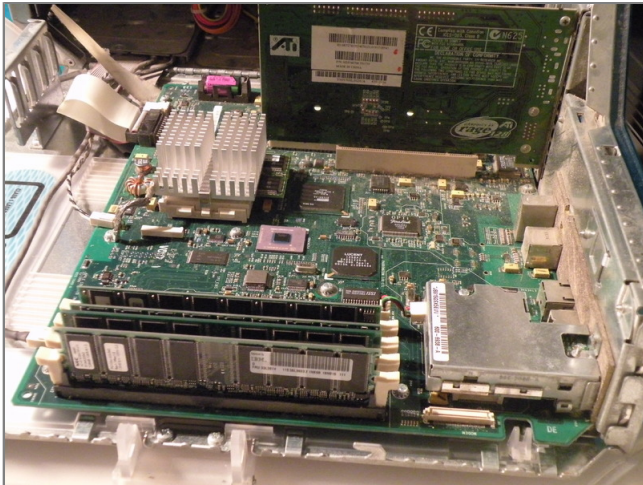
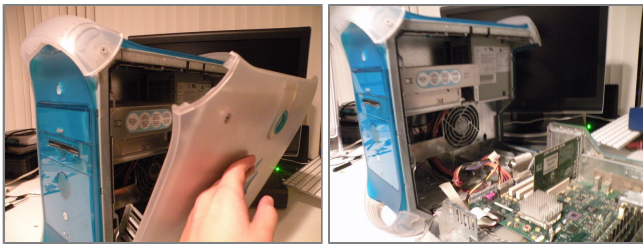
- The Powermac G3 Blue And White





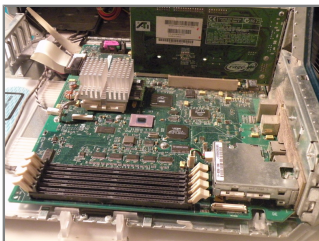
Step 2

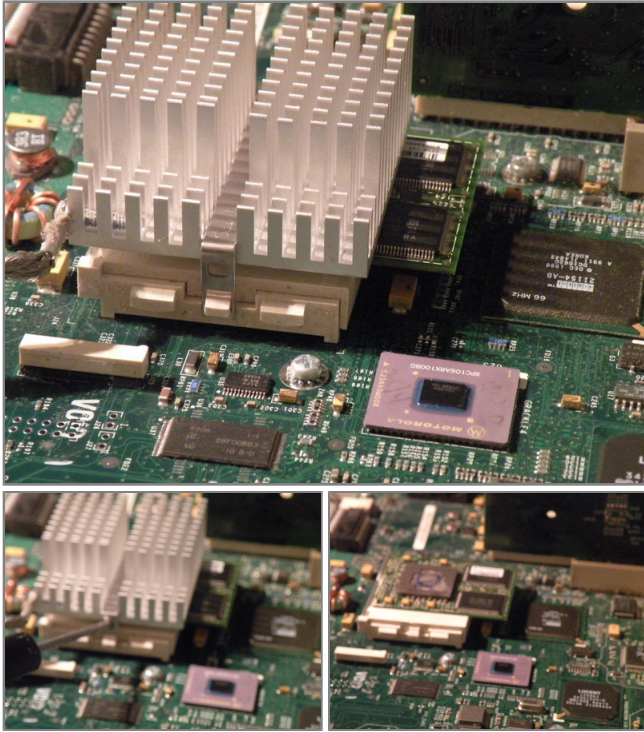
- Start By Disconnecting the computer, and lifting the tab on the side of the computer, and lowering the side panel.



Step 3

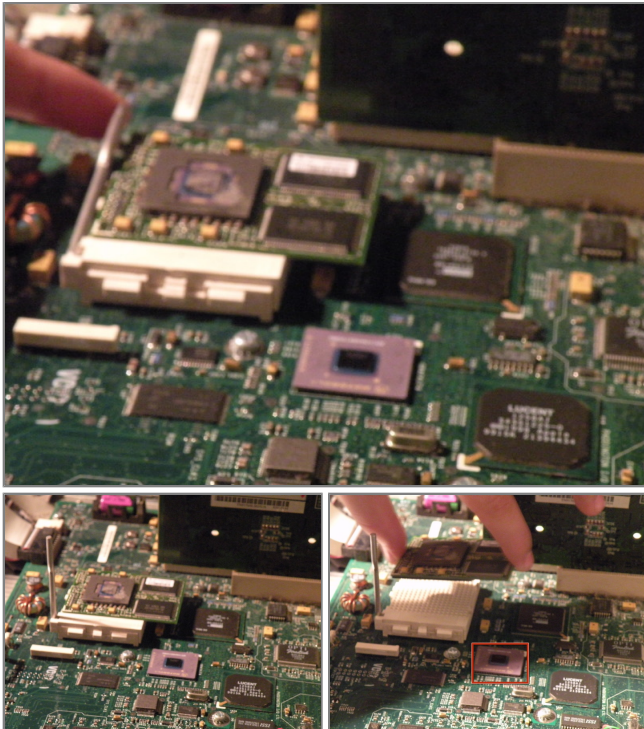
- Ram
- The PowerMac G3 B&W supports up to 512MB of PC133 Ram
- It has 4 ram slots for an optimal configuration of 4X 128MB





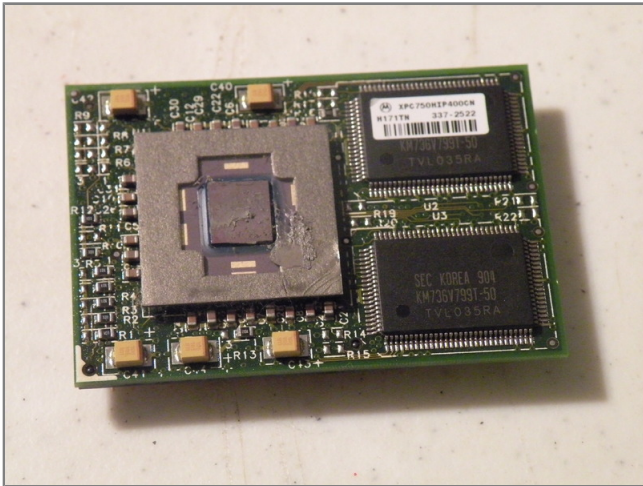
Step 4

- Removing The CPU
- Start by using a flathead to gently pry off the clip, remember you have to put it back on again!
- Then, remove the heatsink.
- This reveals the Motorola PowerPC G3 CPU, this is the 400Mhz Model.



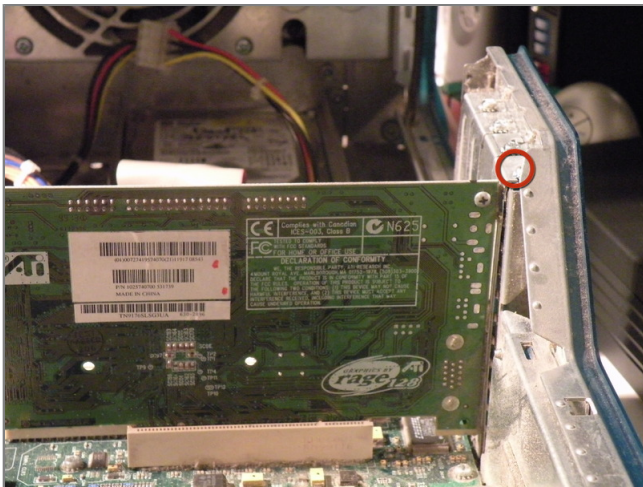
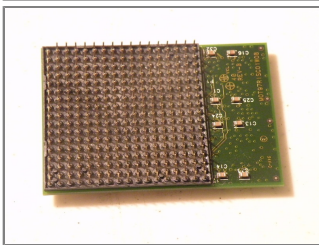
Step 5

- Then, lift the metal retaining lever.
- Then, lift the CPU out of it's socket.
- This is the Motorola Co-Processor.



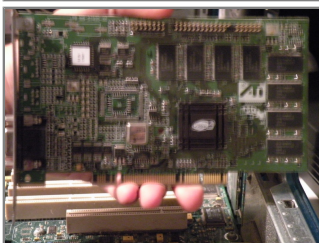
Step 6

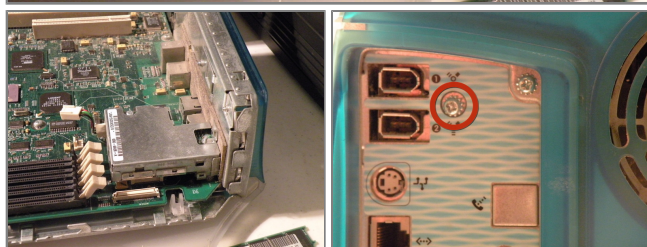
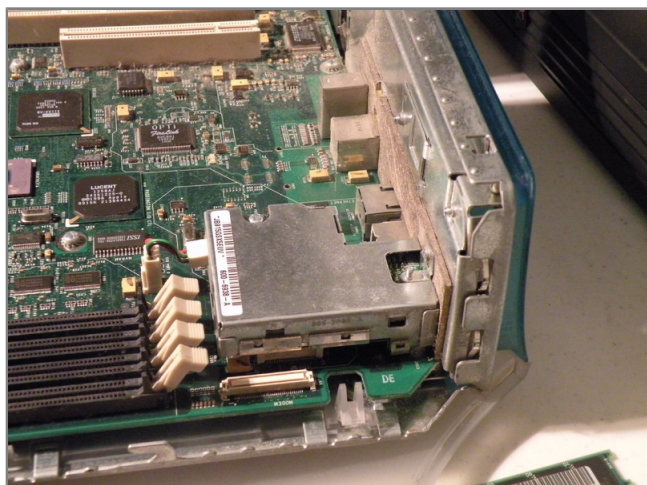
- The CPU: A Motorola XPC750MIP400CM (400Mhz PowerPC 750/G3) With 1Mb Of Level 2 Cache.
- This is another one of those unique apple connectors, it is a 288 pin keyed PGA socket.



Step 7

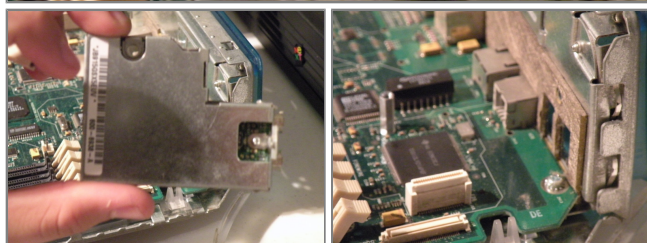
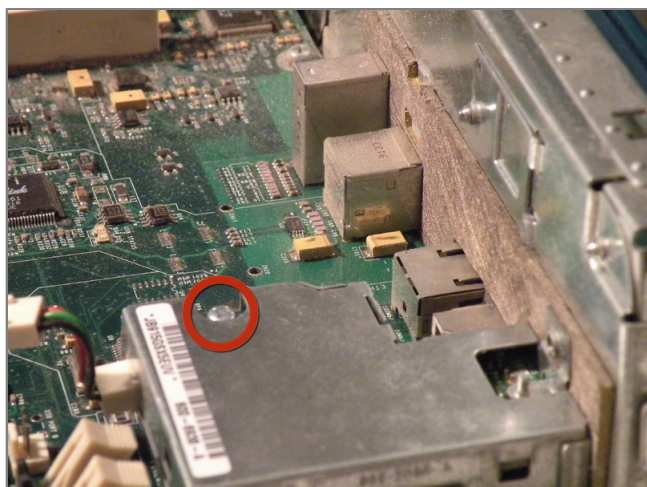
- Graphics Card:
- The Powermac G3 Came Standard With A 16MB ATI 3D Rage PCI Mac Edition Card, there are only a few available upgrade cards.
- Start By Removing this Screw.
- Once that's done, pull the card out.
- Sorry Guys, Regular PCI Cards Won't work here, only Mac Edition PCI-Compatible Cards, and this card won't work in a PC, Also, graphics cards only work in the first slot, the other 4 PCI Slots won't support graphics cards.





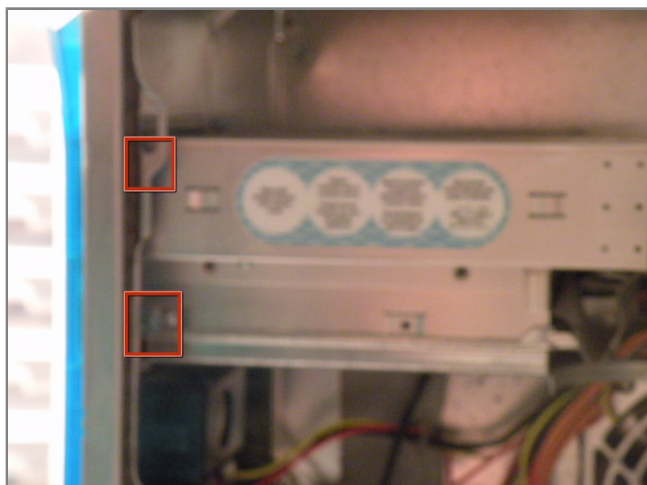
Step 8

- Firewire Module:
- Unplug the power cable from the logic board.
- Then close the case and remove this screw.
- Then open it again.



Step 9

- Then remove this screw too.
- Then lift the module out, there is a connector underneath it, to be careful while doing this.
- Then we can move on.



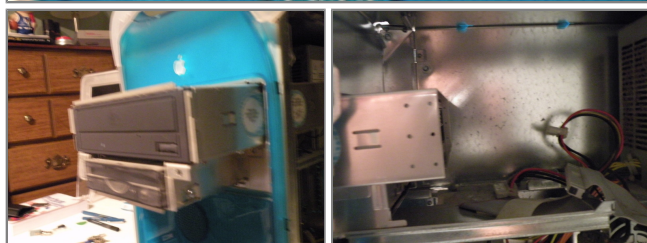
Step 10

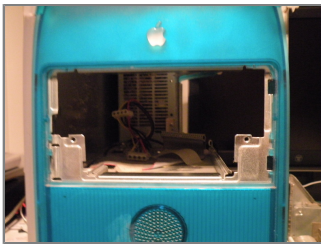
- Removing the Optical Drive/ZIP Drive Caddy:
- Start by pushing in these tabs, and pulling the blue drive bezel out.



Step 11

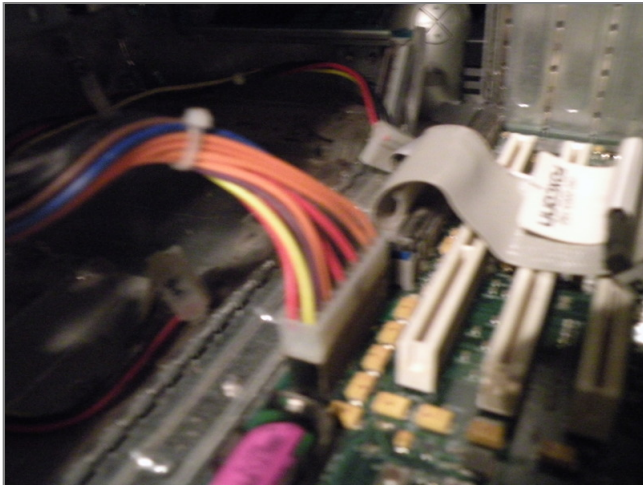
- This will reveal 2 phillips screws.
- Remove them.
- Then push the back of the cage out the front of the case far enough to remove the ribbon and power cables, than slide the cage completely out, and set it aside.





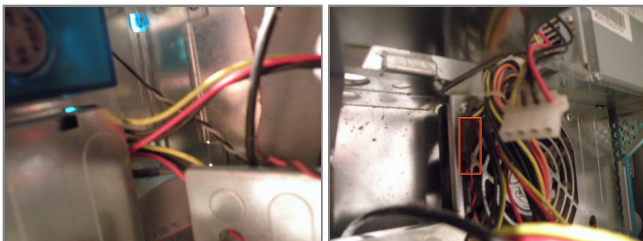
Step 12

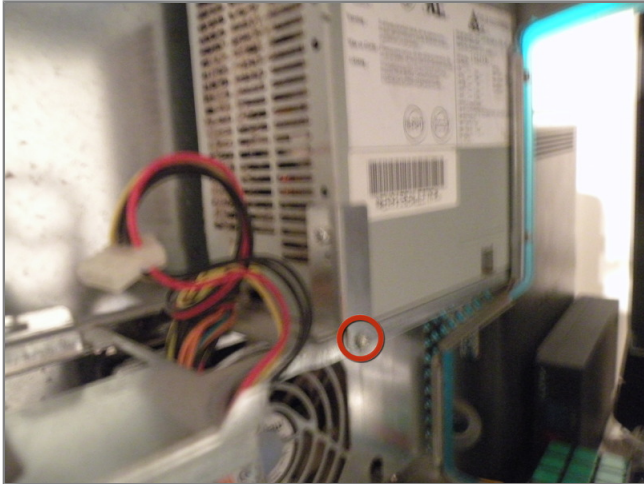
- Removing the drive cage:



Step 13

- Removing the power supply
- Disconnect the power connector from the logic board (this looks a lot like a standard ATX connector, but I have yet to test the voltages)
- There is a 4-Pin Cable connected to the front panel box, remove it.
- Disconnect the internal fan cable.
- The Fan Connector
- Then Route all of the cables up through the case to the level of the power supply.





Step 14

- Remove these phillips screws.
- Now, you can slide the power supply towards you, and remove it.
- Sorry, but my camera battery died, I will post photos on how to remove the logic board after I take them