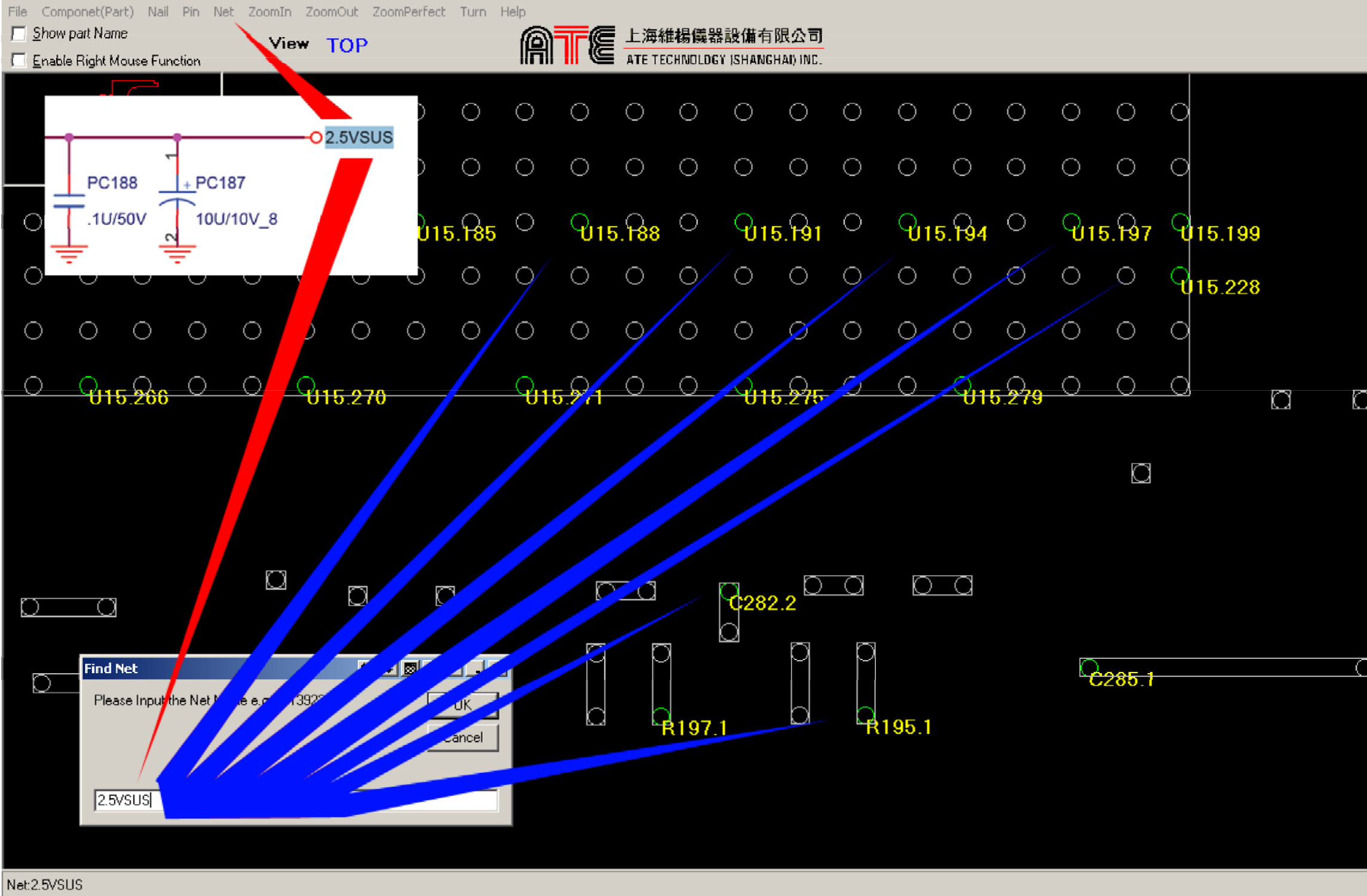


- 1) Start "Board View" Viewer
- 2) Open "Board View" file (*.bv)

how to find any signal on the motherboard



how to find any component on the motherboard

The screenshot shows a PCB design software interface with a dark background. A red diagonal line is drawn across the main workspace. A blue diagonal line points from the search dialog to the component on the board. A red line connects the component on the board to its detailed pinout table.

Find Component(Part) Dialog:

Please Input the Component(Part) Name or you can input part pinNumber

Input: PU11

Buttons: OK, Cancel

Component Pinout Table (MAX1714A):

Pin	Label	Symbol	Pin	Label
17	VDD	V+	17	V+
19	VCC	BST	19	PR
1	SKIP	DH	1	DH
20	PGOOD	LX	20	LX
13	SHDN	DL	13	DL
12	ILIM	PGND	12	PGND
9	N/C	N/C_1	9	N/C_1
11	REF	N/C_2	11	N/C_2
5	TON	OUT	5	OUT
4	AGND	FB	4	FB

Net: 2.5VSUS