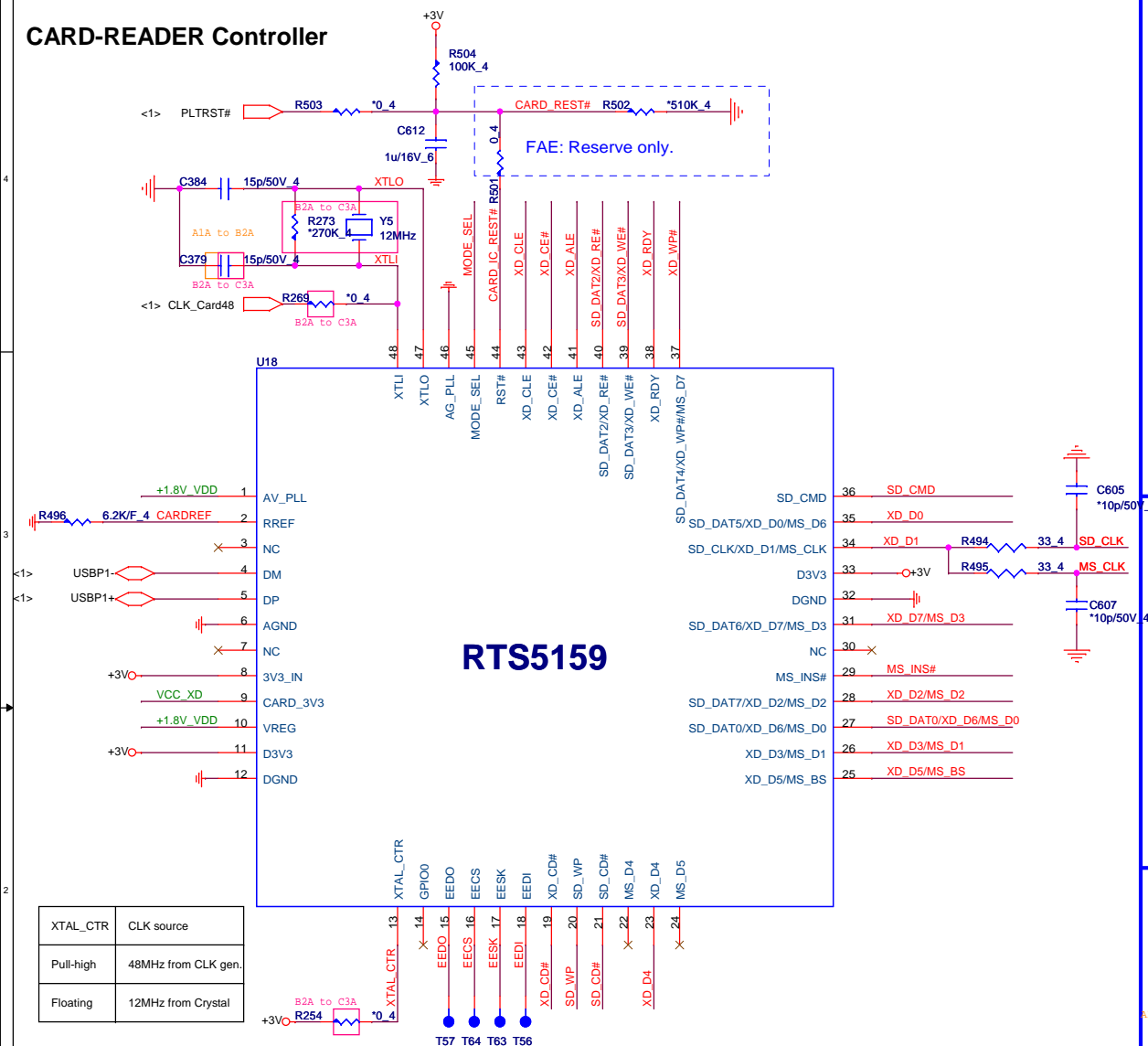




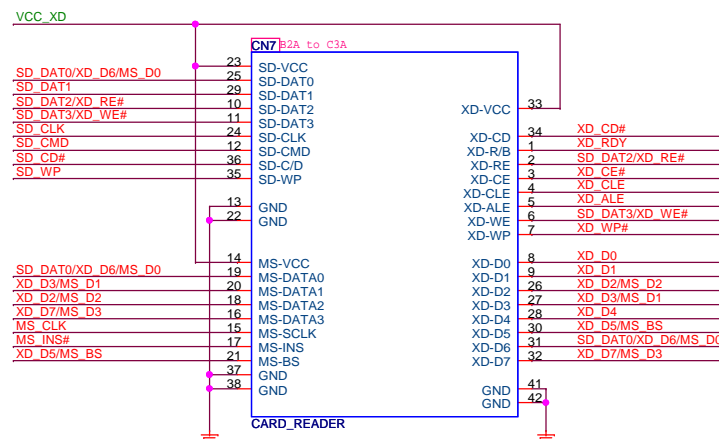
## CARD-READER Controller



XTAL_CTR	CLK source
Pull-high	48MHz from CLK gen.
Floating	12MHz from Crystal

	SD/MMC	MS	XD
SP1		XD CD#	
SP2	SD WP		
SP3	SD CD#		
SP4		XD D4	
SP5		XD D5	MS BS
SP6		XD D3	MS D1
SP7	SD DAT0	XD D6	MS D0
SP8	SD DAT7	XD D2	MS D2
SP9			MS INS#
SP10	SD DAT6	XD D7	MS D3
SP11		XD D1	
SP12	SD DAT5	XD D0	MS D6
SP13	SD DAT4	XD WP#	MS D7
SP14		XD RDY	
SP15	SD DAT3	XD VIE#	
SP16	SD DAT2	XD RE#	
SP17		XD ALE	
SP18		XD CE#	
SP19		XD CLE	

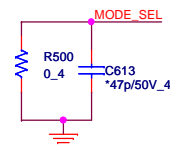
## 4 IN 1 CARD READER



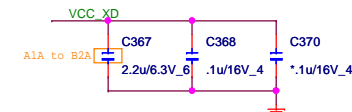
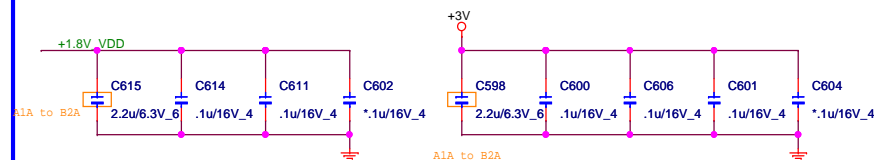
```
updatefootprint 12/11
```

## <sup>-4</sup> Model Select

RTS5159	R500 = 0 ohm
RTS5158E	R500 = NC



## Decoupling CAP

**Quanta Computer Inc.**

**PROJECT : ZK6**

**CARD READER RTS5159**

Size	Document Number
------	-----------------

Date: Thursday, March 12, 2009

Sheet 2 of 2

Rev

Model		REV	CHANGE LIST				MODEL	ZK6	
								FROM	To
ZK6_USB	A1A to B2A	FIRST RELEASED: 2009/01/09							
		所有的變更以橘色方框highlight , BOM chane hightlight with red							
		2009/02/03 item1 page01 CN1 change Part							
		2009/02/03 item2 page02 add Page02 component							
		2009/02/05 item3 page01 CN1 update footprint							
		2009/02/05 item4 page01 CN1 update footprint<88502-1201-12p-1>							
		2009/02/06 item4 page01 Delete HOLE1,3,4							
		2009/02/09 item5 page01 HOLE5,HOLE6,HOLE7,HOLE8,HOLE9 connect to GND							
		2009/02/12 item6 page01 C598,C367,C615 change to CH52201K991							
	B2A to C3A	2009/03/02 item7 page02 CN7 change footprint from <4IN1-R015-212-LM-42P-H> to <4in1-r015-212-lm-42p-h-nb4>							
		2009/03/09 item8 page02 Y5,R273更換順序 出來先到晶振才到電阻電容							
		2009/03/09 item9 page02 R254 & R269 not stuff , C379 & Y5 should stuff							
		2009/03/11 item10 page01 delete R2,R3							
		2009/03/12 item11 page02 delete 0 ohm resistor 20 pcs<R250R251R252R253R255R261R262R263R264R265R267R271R272R278R281R282R283R284R285R286>							
		2009/03/12 item12 page01 C4 change from<CH71001M687>to<CC73301MZ00>							